

Oklahoma Corporation Commission
Oil & Gas Conservation Division
Post Office Box 52000
Oklahoma City, Oklahoma 73152-2000
Rule 165: 10-3-25

Form 1002A

API No.: 35063246930001

Completion Report

Spud Date: August 17, 2017

OTC Prod. Unit No.: 063-222795

Drilling Finished Date: September 14, 2017

1st Prod Date: December 01, 2017

Completion Date: November 24, 2017

Drill Type: HORIZONTAL HOLE

Min Gas Allowable: Yes

Well Name: ADAMS 2-36-25CH

Purchaser/Measurer: BP ENERGY

Location: HUGHES 36 9N 11E
SW NW SW SW
936 FSL 250 FWL of 1/4 SEC
Latitude: 36.8707651 Longitude: -96.0638879
Derrick Elevation: 0 Ground Elevation: 936

First Sales Date: 12/01/2017

Operator: CALYX ENERGY III LLC 23515

6120 S YALE AVE STE 1480
TULSA, OK 74136-4226

Completion Type		Location Exception		Increased Density	
X	Single Zone	Order No		Order No	
	Multiple Zone	666526		There are no Increased Density records to display.	
	Commingled				

Casing and Cement							
Type	Size	Weight	Grade	Feet	PSI	SAX	Top of CMT
CONDUCTOR	20			29		15	SURFACE
SURFACE	13 3/8	48	J-55	495		335	SURFACE
PRODUCTION	5.5	17	P-110	13435		1760	3780

Liner								
Type	Size	Weight	Grade	Length	PSI	SAX	Top Depth	Bottom Depth
There are no Liner records to display.								

Total Depth: 13435

Packer	
Depth	Brand & Type
There are no Packer records to display.	

Plug	
Depth	Plug Type
There are no Plug records to display.	

Initial Test Data

Test Date	Formation	Oil BBL/Day	Oil-Gravity (API)	Gas MCF/Day	Gas-Oil Ratio Cu FT/BBL	Water BBL/Day	Pumpin or Flowing	Initial Shut-In Pressure	Choke Size	Flow Tubing Pressure
Dec 09, 2017	MISSISSIPPIAN			1783		4684	FLOWING	62	36	166

Completion and Test Data by Producing Formation

Formation Name: MISSISSIPPIAN

Code: 359MSSP

Class: GAS

Spacing Orders

Order No	Unit Size
665769	640
666472	MULTIUNIT

Perforated Intervals

From	To
4610	13284

Acid Volumes

10 BARRELS 15% HCL

Fracture Treatments

271,198 BARRELS FLUID, 9,029,324 POUNDS SAND

Formation	Top
WAPANUCKA LS	3500
UNION VALLEY LS	3741
CANEY SHALE	4546

Were open hole logs run? Yes

Date last log run: October 25, 2017

Were unusual drilling circumstances encountered? No

Explanation:

Other Remarks

OCC - PER OPERATOR SURFACE LOCATION MOVED TO 936' FROM SOUTH LINE DIFFERENT THAN PERMIT. OCC- THIS DOCUMENT IS ACCEPTED BASED ON THE DATA SUBMITTED NEITHER THE FINAL LOCATION EXCEPTION NOR THE FINAL MULTIUNIT ORDERS HAVE BEEN ISSUED.

Lateral Holes

Sec: 25 TWP: 9N RGE: 11E County: HUGHES

NE NW NW NW

166 FNL 415 FWL of 1/4 SEC

Depth of Deviation: 3529 Radius of Turn: 731 Direction: 358 Total Length: 8732

Measured Total Depth: 13435 True Vertical Depth: 4138 End Pt. Location From Release, Unit or Property Line: 166

FOR COMMISSION USE ONLY

Status: Accepted

1138977

API NO. 3506324693
OTC PROD. 063-222795
UNIT NO.

PLEASE TYPE OR USE BLACK INK ONLY

NOTE:

Attach copy of original 1002A
if recompletion or reentry.

OKLAHOMA CORPORATION COMMISSION

Oil & Gas Conservation Division

Post Office Box 52000

Oklahoma City, Oklahoma 73152-2000

Rule 165:10-3-25

RECEIVED

Form 1002A
Rev. 2009

MAR 05 2018

OKLAHOMA CORPORATION
COMMISSION

640 Acres

☒ ORIGINAL
☐ AMENDED (Reason)

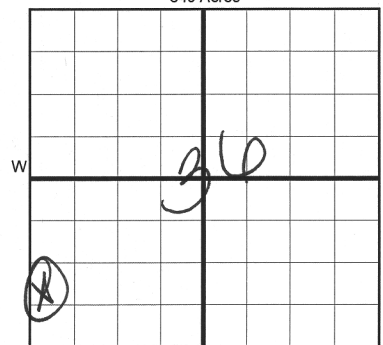
COMPLETION REPORT

TYPE OF DRILLING OPERATION

☐ STRAIGHT HOLE ☐ DIRECTIONAL HOLE ☒ HORIZONTAL HOLE
☐ SERVICE WELL

If directional or horizontal, see reverse for bottom hole location.

COUNTY	HUGHES	SEC	36	TWP	9N	RGE	11E	SPUD DATE	8/17/17	
LEASE NAME	ADAMS							DRLG FINISHED DATE	9/14/17	
SW 1/4 NW 1/4 SW 1/4 SW 1/4	FSL OF 1/4 SEC	936	WELL NO.	2-36-25011	DATE OF WELL COMPLETION	11/24/17				
ELEVATION	Ground	936	FWL OF 1/4 SEC	250	RECOMP DATE	12/1/17				
Derrick FL	Latitude (if known)							36.8707651	Longitude (if known)	-96.0638879
OPERATOR NAME	CALYX ENERGY III, LLC							OTC/OCC OPERATOR NO.	23515	
ADDRESS	6120 S. YALE, SUITE 1480									
CITY	TULSA			STATE	OK		ZIP	74136		



COMPLETION TYPE

<input checked="" type="checkbox"/> SINGLE ZONE
<input type="checkbox"/> MULTIPLE ZONE
Application Date
COMINGLED
Application Date
LOCATION
EXCEPTION ORDER
INCREASED DENSITY
ORDER NO.

CASING & CEMENT (Form 1002C must be attached)

TYPE	SIZE	WEIGHT	GRADE	FEET	PSI	SAX	TOP OF CMT
CONDUCTOR	20"			29		15	SURFACE
SURFACE	13-3/8"	48#	J-55	495		335	SURFACE
INTERMEDIATE							
PRODUCTION	5.5"	17#	P-110	13435		1730 1760	3780
LINER							
TOTAL DEPTH							13,435

PACKER @ _____ BRAND & TYPE _____ PLUG @ _____ TYPE _____ PLUG @ _____ TYPE _____
PACKER @ _____ BRAND & TYPE _____ PLUG @ _____ TYPE _____ PLUG @ _____ TYPE _____

COMPLETION & TEST DATA BY PRODUCING FORMATION

FORMATION	MISSISSIPPI 4N						
SPACING & SPACING ORDER NUMBER	640/665769						
CLASS: Oil, Gas, Dry, Inj, Disp, Comm Disp, Svc	GAS						
PERFORATED INTERVALS	4610-13284						
ACID/VOLUME	10 Bbls 15% HCL						
FRACTURE TREATMENT (Fluids/Prop Amounts)	271198 Bbls FLUID						
	9,029,324 # Sd						

☒ Min Gas Allowable (165:10-17-7)
OR
☐ Oil Allowable (165:10-13-3)

Gas Purchaser/Measurer
First Sales Date

BP Energy
12/1/2017

INITIAL TEST DATA

INITIAL TEST DATE	12/9/2017						
OIL-BBL/DAY	0						
OIL-GRAVITY (API)							
GAS-MCF/DAY	1783						
GAS-OIL RATIO CU FT/BBL							
WATER-BBL/DAY	4684						
PUMPING OR FLOWING	Flowing						
INITIAL SHUT-IN PRESSURE	62						
CHOKE SIZE	36						
FLOW TUBING PRESSURE	166						

AS SUBMITTED

A record of the formations drilled through, and pertinent remarks are presented on the reverse. I declare that I have knowledge of the contents of this report and am authorized by my organization to make this report, which was prepared by me or under my supervision and direction, with the data and facts stated herein to be true, correct, and complete to the best of my knowledge and belief.

SIGNATURE	Teresa Wade	DATE	3/2/2018	PHONE NUMBER	918-949-4224
6120 S. Yale #1480	Tulsa	OK	74136	twade@calyxenergy.com	
ADDRESS	CITY	STATE	ZIP	EMAIL ADDRESS	

PLEASE TYPE OR USE BLACK INK ONLY
FORMATION RECORD

Give formation names and tops, if available, or descriptions and thickness of formations drilled through. Show intervals cored or drillstem tested.

LEASE NAME ADAMS WELL NO. 2-36-25CH

NAMES OF FORMATIONS	TOP
WAPANUCKA LS	3,500
UNION VALLEY LS	3,741
CANEY SH	4,546

FOR COMMISSION USE ONLY

ITD on file ☐ YES ☐ NO

APPROVED _____ DISAPPROVED _____

2) Reject Codes _____

Were open hole logs run? X yes ___ no

Date Last log was run 10/25/2017

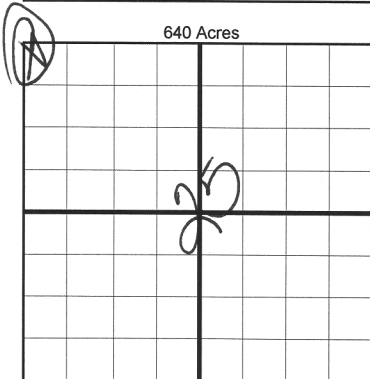
Was CO₂ encountered? ___ yes X no at what depths? _____

Was H₂S encountered? ___ yes X no at what depths? _____

Were unusual drilling circumstances encountered? ___ yes X no

If yes, briefly explain below _____

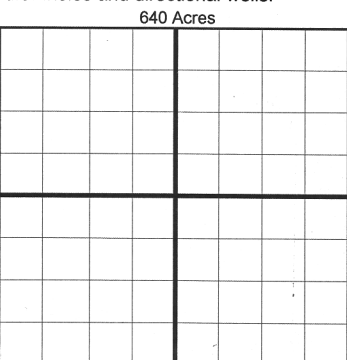
Other remarks: _____



If more than three drainholes are proposed, attach a separate sheet indicating the necessary information.

Direction must be stated in degrees azimuth.
Please note, the horizontal drainhole and its end point must be located within the boundaries of the lease or spacing unit.

Directional surveys are required for all drainholes and directional wells.



BOTTOM HOLE LOCATION FOR DIRECTIONAL HOLE

SEC	TWP	RGE	COUNTY		
Spot Location	1/4	1/4	1/4	Feet From 1/4 Sec Lines	FSL
Measured Total Depth	True Vertical Depth		BHL From Lease, Unit, or Property Line:		

BOTTOM HOLE LOCATION FOR HORIZONTAL HOLE: (LATERALS)

LATERAL #1						HUGHES	
SEC	TWP	RGE	COUNTY				
25	9N	11E	HUGHES				
Spot Location	1/4	1/4	1/4	Feet From 1/4 Sec Lines	FNL	FWL	415
Depth of Deviation	3,529		Radius of Turn	731		Direction	358 NW
Measured Total Depth	13,435		True Vertical Depth	4,138		Total Length	8,732
				BHL From Lease, Unit, or Property Line: 198 166			

LATERAL #2

SEC	TWP	RGE	COUNTY		
Spot Location	1/4	1/4	1/4	Feet From 1/4 Sec Lines	FSL
Depth of Deviation	Radius of Turn		Direction		
Measured Total Depth	True Vertical Depth		BHL From Lease, Unit, or Property Line:		

LATERAL #3

SEC	TWP	RGE	COUNTY		
Spot Location	1/4	1/4	1/4	Feet From 1/4 Sec Lines	FSL
Depth of Deviation	Radius of Turn		Direction		
Measured Total Depth	True Vertical Depth		BHL From Lease, Unit, or Property Line:		

API NO. 506324693
OTC PROD. 063-222795
UNIT NO.

PLEASE TYPE OR USE BLACK INK ONLY

NOTE:

Attach copy of original 1002A if recompletion or reentry.

OKLAHOMA CORPORATION COMMISSION

Oil & Gas Conservation Division

Post Office Box 52000

Oklahoma City, Oklahoma 73152-2000

Rule 165:10-3-25

RECEIVED

MAR 05 2018

OKLAHOMA CORPORATION COMMISSION

Form 1002A
Rev. 2009

1016EZ

☒ ORIGINAL
☐ AMENDED (Reason)

COMPLETION REPORT

TYPE OF DRILLING OPERATION

☐ STRAIGHT HOLE ☐ DIRECTIONAL HOLE ☒ HORIZONTAL HOLE
SERVICE WELL

If directional or horizontal, see reverse for bottom hole location.

COUNTY	HUGHES	SEC	36	TWP	9N	RGE	11E	SPUD DATE	8/17/17
LEASE NAME	ADAMS	WELL NO.	2-36-25CH	DRLG FINISHED DATE	9/14/17	DATE OF WELL COMPLETION	11/24/17	1st PROD DATE	12/1/17
SW 1/4 NW 1/4 SW 1/4 SW 1/4		FSL OF 1/4 SEC	906	FWL OF 1/4 SEC	250	RECOMP DATE			
ELEVATION Derrick FL	Ground	936	Latitude (if known)	36.8707651	Longitude (if known)	-96.0638879			
OPERATOR NAME	CALYX ENERGY III, LLC	OTC/OCC OPERATOR NO.	23515						
ADDRESS	6120 S. YALE, SUITE 1480								
CITY	TULSA	STATE	OK	ZIP	74136				

640 Acres

LOCATE WELL

COMPLETION TYPE

<input checked="" type="checkbox"/> SINGLE ZONE
<input type="checkbox"/> MULTIPLE ZONE
Application Date
COMMINGLED
Application Date
LOCATION
EXCEPTION ORDER
INCREASED DENSITY
ORDER NO.

CASING & CEMENT (Form 1002C must be attached)

TYPE	SIZE	WEIGHT	GRADE	FEET	PSI	SAX	TOP OF CMT
CONDUCTOR	20"			29		15	SURFACE
SURFACE	13-3/8"	48#	J-55	495		335	SURFACE
INTERMEDIATE							
PRODUCTION	5.5"	17#	P-110	13435		1730 1760	3780
LINER							
TOTAL DEPTH							13,435

PACKER @ _____ BRAND & TYPE _____ PLUG @ _____ TYPE _____ PLUG @ _____ TYPE _____
PACKER @ _____ BRAND & TYPE _____ PLUG @ _____ TYPE _____ PLUG @ _____ TYPE _____

COMPLETION & TEST DATA BY PRODUCING FORMATION

FORMATION	MISSISSIPPI 4N						
SPACING & SPACING ORDER NUMBER	640/665769						
CLASS: Oil, Gas, Dry, Inj, Disp, Comm Disp, Svc	GAS						
PERFORATED INTERVALS	4610-13284						
ACID/VOLUME	10 Bbls 15% HCL						
FRACTURE TREATMENT (Fluids/Prop Amounts)	271198 Bbls FLUID						
	9,029,324 # Sd						

Min Gas Allowable (165:10-17-7)

☒

OR

Oil Allowable (165:10-13-3)

Gas Purchaser/Measurer

First Sales Date

BP Energy

12/1/2017

INITIAL TEST DATA

INITIAL TEST DATE	12/9/2017						
OIL-BBL/DAY	0						
OIL-GRAVITY (API)							
GAS-MCF/DAY	1783						
GAS-OIL RATIO CU FT/BBL							
WATER-BBL/DAY	4684						
PUMPING OR FLOWING	Flowing						
INITIAL SHUT-IN PRESSURE	62						
CHOKE SIZE	36						
FLOW TUBING PRESSURE	166						

AS SUBMITTED

A record of the formations drilled through, and pertinent remarks are presented on the reverse. I declare that I have knowledge of the contents of this report and am authorized by my organization to make this report, which was prepared by me or under my supervision and direction, with the data and facts stated herein to be true, correct, and complete to the best of my knowledge and belief.

SIGNATURE	Teresa Wade	DATE	3/2/2018	PHONE NUMBER	918-949-4224				
ADDRESS	6120 S. Yale #1480	CITY	Tulsa	STATE	OK	ZIP	74136	EMAIL ADDRESS	twade@calyxenergy.com

SCANNED