

Oklahoma Corporation Commission  
Oil & Gas Conservation Division  
Post Office Box 52000  
Oklahoma City, Oklahoma 73152-2000  
Rule 165: 10-3-25

Form 1002A

API No.: 35005204620000

**Completion Report**

Spud Date: August 10, 2017

OTC Prod. Unit No.: 222515

Drilling Finished Date: September 06, 2017

1st Prod Date: November 05, 2017

Completion Date: October 05, 2017

**Drill Type:** HORIZONTAL HOLE

Well Name: ALLEN 1-22H

Purchaser/Measurer: SOUTHWEST ENERGY LP

Location: ATOKA 14 2S 10E  
SE SW SW SW  
271 FSL 497 FWL of 1/4 SEC  
Derrick Elevation: 0 Ground Elevation: 673

First Sales Date: 11/05/2017

Operator: CANYON CREEK ENERGY OPERATING LLC 23443

2431 E 61ST ST STE 400  
TULSA, OK 74136-1237

Completion Type	
X	Single Zone
	Multiple Zone
	Commingled

Location Exception
Order No
N/A

Increased Density
Order No
N/A

Casing and Cement							
Type	Size	Weight	Grade	Feet	PSI	SAX	Top of CMT
CONDUCTOR	20	94	H-40	40			
SURFACE	9 5/8	36	J-55	1000		200	SURFACE
PRODUCTION	5 1/2	20	P-110	12837		1200	6200

Liner								
Type	Size	Weight	Grade	Length	PSI	SAX	Top Depth	Bottom Depth
There are no Liner records to display.								

**Total Depth: 12851**

Packer	
Depth	Brand & Type
There are no Packer records to display.	

Plug	
Depth	Plug Type
There are no Plug records to display.	

Initial Test Data
-------------------

Test Date	Formation	Oil BBL/Day	Oil-Gravity (API)	Gas MCF/Day	Gas-Oil Ratio Cu FT/BBL	Water BBL/Day	Pumpin or Flowing	Initial Shut-In Pressure	Choke Size	Flow Tubing Pressure
Nov 19, 2017	WOODFORD	20	44	2500	125000	1500	FLOWING	620	FO	300

<b>Completion and Test Data by Producing Formation</b>															
Formation Name: WOODFORD		Code: 319WDFD	Class: GAS												
<table border="1" style="width:100%; border-collapse: collapse;"> <tr><th colspan="2">Spacing Orders</th></tr> <tr> <th>Order No</th> <th>Unit Size</th> </tr> <tr> <td>668476</td> <td>640</td> </tr> </table>		Spacing Orders		Order No	Unit Size	668476	640	<table border="1" style="width:100%; border-collapse: collapse;"> <tr><th colspan="2">Perforated Intervals</th></tr> <tr> <th>From</th> <th>To</th> </tr> <tr> <td>7769</td> <td>12653</td> </tr> </table>		Perforated Intervals		From	To	7769	12653
Spacing Orders															
Order No	Unit Size														
668476	640														
Perforated Intervals															
From	To														
7769	12653														
<table border="1" style="width:100%; border-collapse: collapse;"> <tr><th colspan="2">Acid Volumes</th></tr> <tr> <td colspan="2">NO ACID</td> </tr> </table>		Acid Volumes		NO ACID		<table border="1" style="width:100%; border-collapse: collapse;"> <tr><th colspan="2">Fracture Treatments</th></tr> <tr> <td colspan="2">165,080 BARRELS FRAC FLUID, 5,141,700 POUNDS PROPPANT</td> </tr> </table>		Fracture Treatments		165,080 BARRELS FRAC FLUID, 5,141,700 POUNDS PROPPANT					
Acid Volumes															
NO ACID															
Fracture Treatments															
165,080 BARRELS FRAC FLUID, 5,141,700 POUNDS PROPPANT															

Formation	Top
WOODFORD	7021

Were open hole logs run? No

Date last log run:

Were unusual drilling circumstances encountered? No

Explanation:

<b>Other Remarks</b>
OCC - THIS WELL'S COMPLETION INTERVAL IS WITHIN WHAT THE SPACING ORDER ALLOWS FOR THIS FORMATION.

<b>Lateral Holes</b>
Sec: 22 TWP: 2S RGE: 10E County: ATOKA  SW SE SE SE  50 FSL 635 FEL of 1/4 SEC  Depth of Deviation: 5775 Radius of Turn: 1733 Direction: 177 Total Length: 5343  Measured Total Depth: 12851 True Vertical Depth: 7000 End Pt. Location From Release, Unit or Property Line: 50

<b>FOR COMMISSION USE ONLY</b>	
Status: Accepted	1140246

# RECEIVED

Form 1002A  
Rev. 2009

JUN 27 2018

OKLAHOMA CORPORATION  
COMMISSION

API NO. 005 20462  
OTC PROD. UNIT NO. 222515

PLEASE TYPE OR USE BLACK INK ONLY

NOTE:

Attach copy of original 1002A  
if recompletion or reentry.

OKLAHOMA CORPORATION COMMISSION  
Oil & Gas Conservation Division  
Post Office Box 52000  
Oklahoma City, Oklahoma 73152-2000  
Rule 165:10-3-25

## COMPLETION REPORT

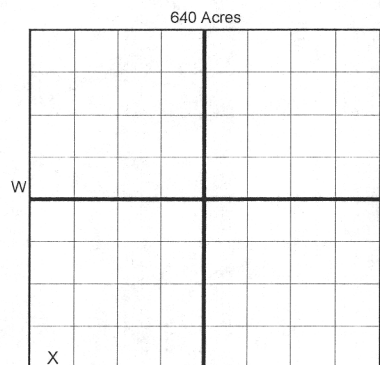
☒ ORIGINAL  
☐ AMENDED (Reason) \_\_\_\_\_

### TYPE OF DRILLING OPERATION

☐ STRAIGHT HOLE ☐ DIRECTIONAL HOLE ☒ HORIZONTAL HOLE  
☐ SERVICE WELL

If directional or horizontal, see reverse for bottom hole location.

COUNTY Atoka SEC 14 TWP 2S RGE 10E  
LEASE NAME ALLEN WELL NO. 1-22H  
SE 1/4 SW 1/4 SW 1/4 SW 1/4 FSL OF 271' FWL OF 497'  
ELEVATION Derrick FL Ground 673' Latitude (if known) 34.22.32.01N Longitude (if known) 96.13.51.29W  
OPERATOR NAME Canyon Creek Energy Operating LLC  
ADDRESS 2431 E. 61st St  
CITY Tulsa STATE OK ZIP 74136



### COMPLETION TYPE

☒ SINGLE ZONE  
☐ MULTIPLE ZONE  
Application Date \_\_\_\_\_  
☐ COMMINGLED  
Application Date \_\_\_\_\_  
LOCATION EXCEPTION ORDER N/A  
INCREASED DENSITY ORDER NO. N/A

### CASING & CEMENT (Form 1002C must be attached)

TYPE	SIZE	WEIGHT	GRADE	FEET	PSI	SAX	TOP OF CMT
CONDUCTOR	20"	94#	H-40	40			
SURFACE	9 5/8"	36#	J55	1000		200	Surface
INTERMEDIATE							
PRODUCTION	5 1/2"	20#	P110	12,837		1200	6200
LINER							
						TOTAL DEPTH	12,851

PACKER @ \_\_\_\_\_ BRAND & TYPE \_\_\_\_\_ PLUG @ \_\_\_\_\_ TYPE \_\_\_\_\_ PLUG @ \_\_\_\_\_ TYPE \_\_\_\_\_  
PACKER @ \_\_\_\_\_ BRAND & TYPE \_\_\_\_\_ PLUG @ \_\_\_\_\_ TYPE \_\_\_\_\_ PLUG @ \_\_\_\_\_ TYPE \_\_\_\_\_

### COMPLETION & TEST DATA BY PRODUCING FORMATION

FORMATION	Woodford						
SPACING & SPACING ORDER NUMBER	668476 (640)						
CLASS: Oil, Gas, Dry, Inj, Disp, Comm Disp, Svc	Gas						
PERFORATED INTERVALS	7769-12653						
ACID/VOLUME	No Acid						
FRACTURE TREATMENT (Fluids/Prop Amounts)	165,080 bbls Frac Fluid						
	5,141,700 #s lbs proppant						

Reported  
To Frac Focus

Min Gas Allowable (165:10-17-7)

OR

Oil Allowable (165:10-13-3)

Gas Purchaser/Measurer  
First Sales Date

Southwest Energy LP  
11/5/2017

### INITIAL TEST DATA

INITIAL TEST DATE	11/19/2017						
OIL-BBL/DAY	20						
OIL-GRAVITY ( API)	44						
GAS-MCF/DAY	2,500						
GAS-OIL RATIO CU FT/BBL	125,000						
WATER-BBL/DAY	1,500						
PUMPING OR FLOWING	Flowing						
INITIAL SHUT-IN PRESSURE	620 #s						
CHOKE SIZE	FO						
FLOW TUBING PRESSURE	300 #s						

AS SUBMITTED

A record of the formations drilled through, and pertinent remarks are presented on the reverse. I declare that I have knowledge of the contents of this report and am authorized by my organization to make this report, which was prepared by me or under my supervision and direction, with the data and facts stated herein to be true, correct, and complete to the best of my knowledge and belief.

C. Daniel Jacobs  
SIGNATURE  
2431 E. 61st St. Suite 400  
ADDRESS  
Tulsa  
CITY  
OK  
STATE  
74136  
ZIP  
11-25-18  
DATE  
918-561-6737  
PHONE NUMBER  
djacobs@cceok.com  
EMAIL ADDRESS

PLEASE TYPE OR USE BLACK INK ONLY  
FORMATION RECORD

Give formation names and tops, if available, or descriptions and thickness of formations drilled through. Show intervals cored or drillstem tested.

LEASE NAME ALLEN WELL NO. 1-22H

NAMES OF FORMATIONS	TOP
Woodford	7,021 TVD 7,266 MD

FOR COMMISSION USE ONLY

ITD on file ☐ YES ☐ NO

APPROVED \_\_\_\_\_ DISAPPROVED \_\_\_\_\_

2) Reject Codes

\_\_\_\_\_

\_\_\_\_\_

\_\_\_\_\_

\_\_\_\_\_

Were open hole logs run? \_\_\_\_\_ yes ☒ no

Date Last log was run \_\_\_\_\_

Was CO<sub>2</sub> encountered? \_\_\_\_\_ yes ☒ no at what depths? \_\_\_\_\_

Was H<sub>2</sub>S encountered? \_\_\_\_\_ yes ☒ no at what depths? \_\_\_\_\_

Were unusual drilling circumstances encountered? \_\_\_\_\_ yes ☒ no

If yes, briefly explain below

Other remarks:

\_\_\_\_\_

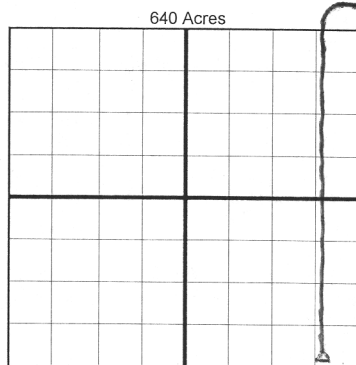
\_\_\_\_\_

\_\_\_\_\_

\_\_\_\_\_

\_\_\_\_\_

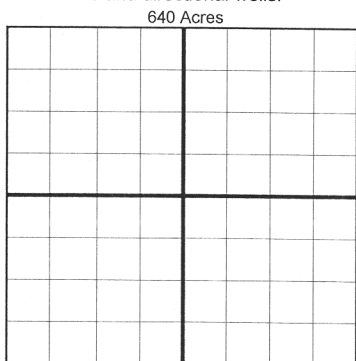
\_\_\_\_\_



If more than three drainholes are proposed, attach a separate sheet indicating the necessary information.

Direction must be stated in degrees azimuth.  
Please note, the horizontal drainhole and its end point must be located within the boundaries of the lease or spacing unit.

Directional surveys are required for all drainholes and directional wells.



BOTTOM HOLE LOCATION FOR DIRECTIONAL HOLE

SEC	TWP	RGE	COUNTY
Spot Location	1/4	1/4	1/4
Measured Total Depth	True Vertical Depth	Feet From 1/4 Sec Lines	FSL
		BHL From Lease, Unit, or Property Line:	FWL

BOTTOM HOLE LOCATION FOR HORIZONTAL HOLE: (LATERALS)

LATERAL #1	SEC	TWP	RGE	COUNTY
	22	2S	10E	ATOKA
Spot Location	1/4	SE	1/4	SE
Depth of Deviation	5,775	Radius of Turn	1733	Direction
Measured Total Depth	12,851	True Vertical Depth	7,000	Total Length
		BHL From Lease, Unit, or Property Line:	50'FSL 635'FEL	

LATERAL #2	SEC	TWP	RGE	COUNTY
Spot Location	1/4	1/4	1/4	1/4
Depth of Deviation		Radius of Turn	Direction	Total Length
Measured Total Depth		True Vertical Depth	BHL From Lease, Unit, or Property Line:	

LATERAL #3	SEC	TWP	RGE	COUNTY
Spot Location	1/4	1/4	1/4	1/4
Depth of Deviation		Radius of Turn	Direction	Total Length
Measured Total Depth		True Vertical Depth	BHL From Lease, Unit, or Property Line:	

9/1/18  
Oklahoma Corporation Commission  
Oil & Gas Conservation Division  
Post Office Box 52000  
Oklahoma City, Oklahoma 73152-2000  
Rule 165: 10-3-25

Form 1002A

1016EZ

API No.: 5005204620000

Completion Report

Spud Date: August 10, 2017

OTC Prod. Unit No.: 222515

Drilling Finished Date: September 06, 2017

1st Prod Date: November 05, 2017

Completion Date: October 05, 2017

Drill Type: HORIZONTAL HOLE

Well Name: ALLEN 1-22H

Purchaser/Measurer: SOUTHWEST ENERGY LP

Location: ATOKA 14 2S 10E (SC) BHL: 22-02S-10E  
SE SW SW SW  
271 FSL 497 FWL of 1/4 SEC  
Derrick Elevation: 0 Ground Elevation: 673

First Sales Date: 11/05/2017

Operator: CANYON CREEK ENERGY OPERATING LLC 23443

2431 E 61ST ST STE 400  
TULSA, OK 74136-1237

Completion Type		Location Exception		Increased Density	
X	Single Zone	Order No		Order No	
	Multiple Zone	N/A		N/A	
	Commingled				

Casing and Cement							
Type	Size	Weight	Grade	Feet	PSI	SAX	Top of CMT
CONDUCTOR	20	94	H-40	40			
SURFACE	9 5/8	36	J-55	1000		200	SURFACE
PRODUCTION	5 1/2	20	P-110	12837		1200	6200

Liner								
Type	Size	Weight	Grade	Length	PSI	SAX	Top Depth	Bottom Depth
There are no Liner records to display.								

Total Depth: 12851

Packer		Plug	
Depth	Brand & Type	Depth	Plug Type
There are no Packer records to display.		There are no Plug records to display.	

Initial Test Data
-------------------

August 22, 2018

11/19/17

319 WDFD

620

PCW  
1 of 2  
QR

EZ

Test Date	Formation	Oil BBL/Day	Oil-Gravity (API)	Gas MCF/Day	Gas-Oil Ratio Cu FT/BBL	Water BBL/Day	Pumpin or Flowing	Initial Shut-In Pressure	Choke Size	Flow Tubing Pressure
Nov 19, 2017	WOODFORD	20	44	2500	125000	1500	FLOWING	620	FO	300

#### Completion and Test Data by Producing Formation

Formation Name: WOODFORD

Code: 319WDFD

Class: GAS

Spacing Orders		Perforated Intervals	
Order No	Unit Size	From	To
668476	640 <i>H</i>	7769	12653
Acid Volumes		Fracture Treatments	
NO ACID		165,080 BARRELS FRAC FLUID, 5,141,700 POUNDS PROPPANT	

Formation	Top
WOODFORD	7021

Were open hole logs run? No

Date last log run:

Were unusual drilling circumstances encountered? No

Explanation:

#### Other Remarks

OCC - THIS WELL'S COMPLETION INTERVAL IS WITHIN WHAT THE SPACING ORDER ALLOWS FOR THIS FORMATION.

#### Lateral Holes

Sec: 22 TWP: 2S RGE: 10E County: ATOKA

SW SE SE SE

50 FSL 635 FEL of 1/4 SEC

Depth of Deviation: 5775 Radius of Turn: 1733 Direction: 177 Total Length: 5343

Measured Total Depth: 12851 True Vertical Depth: 7000 End Pt. Location From Release, Unit or Property Line: 50

#### FOR COMMISSION USE ONLY

1140246

Status: Accepted