

Oklahoma Corporation Commission
Oil & Gas Conservation Division
Post Office Box 52000
Oklahoma City, Oklahoma 73152-2000
Rule 165: 10-3-25

Form 1002A

API No.: 35093250360000

Completion Report

Spud Date: October 03, 2016

OTC Prod. Unit No.: 093-2185060

Drilling Finished Date: October 30, 2016

1st Prod Date: March 20, 2017

Completion Date: January 13, 2017

Drill Type: HORIZONTAL HOLE

Min Gas Allowable: Yes

Well Name: THREE MUSKETEERS 35-1H

Purchaser/Measurer: DCP MIDSTREAM

Location: MAJOR 35 22N 16W
NW NE NW NW
165 FNL 700 FWL of 1/4 SEC
Latitude: 36.347196301 Longitude: -98.88627037
Derrick Elevation: 23 Ground Elevation: 1623

First Sales Date: 03/22/2017

Operator: CARRERA ENERGY LLC 23514
PO BOX 5036
901 W MISSOURI AVE
MIDLAND, TX 79704-5036

Completion Type		Location Exception		Increased Density	
X	Single Zone	Order No		Order No	
	Multiple Zone	660664		There are no Increased Density records to display.	
	Commingled	201804430			

Casing and Cement							
Type	Size	Weight	Grade	Feet	PSI	SAX	Top of CMT
CONDUCTOR	16	65	H-40	120			SURFACE
SURFACE	9.625	36	J-55	1051		370	SURFACE
PRODUCTION	7.0	29	HCP	8790		770	3140

Liner								
Type	Size	Weight	Grade	Length	PSI	SAX	Top Depth	Bottom Depth
LINER	4.5	11.6	HCP	5433	0	420	8266	13699

Total Depth: 13709

Packer	
Depth	Brand & Type
There are no Packer records to display.	

Plug	
Depth	Plug Type
There are no Plug records to display.	

Initial Test Data

Test Date	Formation	Oil BBL/Day	Oil-Gravity (API)	Gas MCF/Day	Gas-Oil Ratio Cu FT/BBL	Water BBL/Day	Pumpin or Flowing	Initial Shut-In Pressure	Choke Size	Flow Tubing Pressure
Apr 06, 2017	MISSISSIPPI LIME	22	37.4	140	6364	1432	ESP	250	64/64	

Completion and Test Data by Producing Formation

Formation Name: MISSISSIPPI LIME

Code: 351MSSLM

Class: OIL

Spacing Orders

Order No	Unit Size
331329	640

Perforated Intervals

From	To
9291	13590

Acid Volumes

2,002 BARRELS 15% HCL

Fracture Treatments

186,591 BARRELS SLICK WATER, 1,754,700 POUNDS 100 MESH, 3,637,200 POUNDS 40/70 SAND
--

Formation	Top
COTTAGE GROVE	6433
OSWEGO	6921
RED FORK	7265
CHESTER	7451
MERAMEC	8288
MISSISSIPPI OSAGE	8391

Were open hole logs run? No

Date last log run: November 15, 2016

Were unusual drilling circumstances encountered? No

Explanation:

Other Remarks

OCC - THE CD 201804430 HAS BEEN HEARD AND RECOMMENDED IT IS A FIX ON THE FINAL LOCATION EXCEPTION ORDER 660664. THE CORRECTING ORDER WILL BE ISSUED SOON.

Lateral Holes

Sec: 35 TWP: 22N RGE: 16W County: MAJOR

SW SE SW SW

168 FSL 695 FWL of 1/4 SEC

Depth of Deviation: 8446 Radius of Turn: 473 Direction: 180 Total Length: 4913

Measured Total Depth: 13709 True Vertical Depth: 9098 End Pt. Location From Release, Unit or Property Line: 168

FOR COMMISSION USE ONLY

1136513

Status: Accepted

RECEIVED

Form 1002A
Rev. 2009

API NO. **35 093 25036**
OTC PROD. UNIT NO. **0932185060**

PLEASE TYPE OR USE BLACK INK ONLY
NOTE:

Attach copy of original 1002A
if recompletion or reentry.

OKLAHOMA CORPORATION COMMISSION
Oil & Gas Conservation Division
Post Office Box 52000
Oklahoma City, Oklahoma 73152-2000
Rule 165:10-3-25

APR 17 2017

OKLAHOMA CORPORATION
COMMISSION
640 Acres

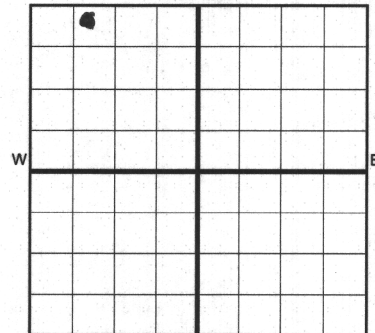
☒ ORIGINAL
☐ AMENDED (Reason) _____

TYPE OF DRILLING OPERATION

☐ STRAIGHT HOLE ☐ DIRECTIONAL HOLE ☒ HORIZONTAL HOLE
☐ SERVICE WELL

If directional or horizontal, see reverse for bottom hole location.

COUNTY Major	SEC 35	TWP 22N	RGE 16W	SPUD DATE 10/3/16
LEASE NAME Three Musketeers	WELL NO. 35-1H			DRLG FINISHED DATE 10/30/16
NW 1/4 NE 1/4 NW 1/4 NW 1/4	1/4	1/4	1/4	DATE OF WELL COMPLETION 1/13/17
ELEVATION N Derrick 23	Ground 1623	FWL OF 1/4 SEC 165	FWL OF 1/4 SEC 700	1st PROD DATE 3-20-2017
Latitude (if known) 36.347196301				RECOMP DATE
Longitude (if known) -98.886270370				
OPERATOR NAME Carrera Energy, LLC				OTC/OCC OPERATOR NO. 23515 23514
ADDRESS 901 Missouri				
CITY Midland		STATE Texas		ZIP 79701



COMPLETION TYPE

<input checked="" type="checkbox"/> SINGLE ZONE
<input type="checkbox"/> MULTIPLE ZONE
Application Date
<input type="checkbox"/> COMMINGLED
Application Date
LOCATION EXCEPTION ORDER INCREASED DENSITY ORDER NO. 660664 F.O.

CASING & CEMENT (Form 1002C must be attached)

TYPE	SIZE	WEIGHT	GRADE	FEET	PSI	SAX	TOP OF CMT
CONDUCTOR	16	65	H-40	120			Surf
SURFACE	9.625	36	J-55	1051		370	Surf
INTERMEDIATE							
PRODUCTION	7.0	29	HCP	8790		770	3140 cbl
LINER	4.5	11.6	HCP	8266-13699		420	8266

PACKER @ **NA** BRAND & TYPE _____ PLUG @ _____ TYPE _____ PLUG @ _____ TYPE _____
PACKER @ _____ BRAND & TYPE _____ PLUG @ _____ TYPE _____ PLUG @ _____ TYPE _____

TOTAL DEPTH **13,709**

COMPLETION & TEST DATA BY PRODUCING FORMATION **351MSSLM**

FORMATION	Mississippi Lime (Osage)						
SPACING & SPACING ORDER NUMBER	331329 640ac						Reported to Frac Focus
CLASS: Oil, Gas, Dry, Inj, Disp, Comm Disp, Svc	OIL						
PERFORATED INTERVALS	13,590-9,291						
ACID/VOLUME	15% HCL_2002 bbls						
FRACTURE TREATMENT (Fluids/Prop Amounts)	186,591 bbls Slick Wtr						
	1,754,700 lbs 100 msh						
	3,637,200 lbs 40/70 wt sand						

☒ Min Gas Allowable (165:10-17-7)
OR
☐ Oil Allowable (165:10-13-3)

Gas Purchaser/Measurer
First Sales Date

DCP Midstream
3-22-2017

INITIAL TEST DATA

INITIAL TEST DATE	4-6-2017
OIL-BBL/DAY	22
OIL-GRAVITY (API)	37.4
GAS-MCF/DAY	140
GAS-OIL RATIO CU FT/BBL	6364:1
WATER-BBL/DAY	1432
PUMPING OR FLOWING	ESP
INITIAL SHUT-IN PRESSURE	250
CHOKE SIZE	64/64
FLOW TUBING PRESSURE	N/A

AS SUBMITTED

A record of the formations drilled through, and pertinent remarks are presented on the reverse. I declare that I have knowledge of the contents of this report and am authorized by my organization to make this report, which was prepared by me or under my supervision and direction, with the data and facts stated herein to be true, correct, and complete to the best of my knowledge and belief.

Richard L. Wright
SIGNATURE

Richard L. Wright
NAME (PRINT OR TYPE)

4-13-2017 **432 695 6970**
DATE PHONE NUMBER

901 Missouri, Midland, Texas 79701
ADDRESS

CITY STATE ZIP

rwright@carreraenergy.com
EMAIL ADDRESS

PLEASE TYPE OR USE BLACK INK ONLY
FORMATION RECORD

Give formation names and tops, if available, or descriptions and thickness of formations drilled through. Show intervals cored or drillstem tested.

LEASE NAME Three Musketeers

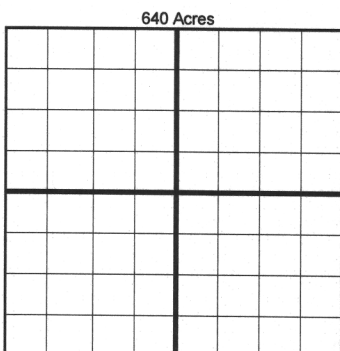
WELL NO. 35-1H

NAMES OF FORMATIONS	TOP
Cottage Grove	6,433
Oswego	6,921
Red Fork	7,265
Chester	7,451
Meramec	8,288
Miss Osage	8,391

FOR COMMISSION USE ONLY	
ITD on file <input type="checkbox"/> YES <input type="checkbox"/> NO	
APPROVED _____	DISAPPROVED _____
2) Reject Codes	

Were open hole logs run?	yes <input type="checkbox"/> no <input checked="" type="checkbox"/>
Date Last log was run	<u>11-15-2016</u>
Was CO ₂ encountered?	yes <input type="checkbox"/> no <input checked="" type="checkbox"/> at what depths? _____
Was H ₂ S encountered?	yes <input type="checkbox"/> no <input checked="" type="checkbox"/> at what depths? _____
Were unusual drilling circumstances encountered?	yes <input type="checkbox"/> no <input checked="" type="checkbox"/>
If yes, briefly explain below	

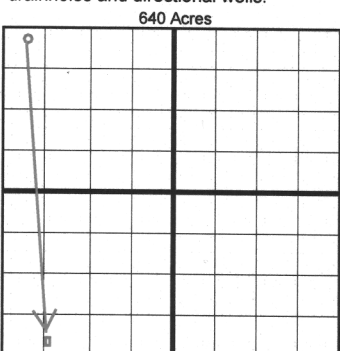
Other remarks:



If more than three drainholes are proposed, attach a separate sheet indicating the necessary information.

Direction must be stated in degrees azimuth. Please note, the horizontal drainhole and its end point must be located within the boundaries of the lease or spacing unit.

Directional surveys are required for all drainholes and directional wells.



BOTTOM HOLE LOCATION FOR DIRECTIONAL HOLE

SEC	TWP	RGE	COUNTY
Spot Location	1/4	1/4	1/4
Measured Total Depth	True Vertical Depth	BHL From Lease, Unit, or Property Line:	

BOTTOM HOLE LOCATION FOR HORIZONTAL HOLE: (LATERALS)

SEC	TWP	RGE	COUNTY
35	22 N	16 W	Major
Spot Location	SE 1/4	SW 1/4	SW 1/4
Depth of Deviation	8,446	Radius of Turn	473'
Measured Total Depth	13,709	True Vertical Depth	9,098
Feet From 1/4 Sec Lines	FSL	167	FWL
Direction	180.26° Az	Total Length	4913.53 ft
BHL From Lease, Unit, or Property Line: 167 FSL & 696 FWL			

LATERAL #2

SEC	TWP	RGE	COUNTY
Spot Location	1/4	1/4	1/4
Depth of Deviation	Radius of Turn	Direction	Total Length
Measured Total Depth	True Vertical Depth	BHL From Lease, Unit, or Property Line:	

LATERAL #3

SEC	TWP	RGE	COUNTY
Spot Location	1/4	1/4	1/4
Depth of Deviation	Radius of Turn	Direction	Total Length
Measured Total Depth	True Vertical Depth	BHL From Lease, Unit, or Property Line:	

Image @ 1002A

3 Musketeers 35-1H

Location: 165 FNL & 700 FWL, Sec 35, T-22-N, R-16-W, Major County, Ok

BHL= 167' FSL & 696 FWL, Sec 35, T-22-N, R-16-W, Major County, Ok

