

Oklahoma Corporation Commission
Oil & Gas Conservation Division
Post Office Box 52000
Oklahoma City, Oklahoma 73152-2000
Rule 165: 10-3-25

Form 1002A

API No.: 35063246940001

Completion Report

Spud Date: August 18, 2017

OTC Prod. Unit No.: 063-222798

Drilling Finished Date: October 11, 2017

1st Prod Date: December 02, 2017

Completion Date: November 28, 2017

Drill Type: HORIZONTAL HOLE

Min Gas Allowable: Yes

Well Name: ADAMS 1-35-26WH

Purchaser/Measurer: BP ENERGY

Location: HUGHES 36 9N 11E
SW NW SW SW
921 FSL 250 FWL of 1/4 SEC
Latitude: 36.8707651 Longitude: -96.0638879
Derrick Elevation: 910 Ground Elevation: 880

First Sales Date: 12/02/2017

Operator: CALYX ENERGY III LLC 23515

6120 S YALE AVE STE 1480
TULSA, OK 74136-4226

Completion Type		Location Exception		Increased Density	
X	Single Zone	Order No		Order No	
	Multiple Zone	675192		There are no Increased Density records to display.	
	Commingled				

Casing and Cement							
Type	Size	Weight	Grade	Feet	PSI	SAX	Top of CMT
CONDUCTOR	20			29		15	SURFACE
SURFACE	13 3/8	48	J-55	499		335	SURFACE
PRODUCTION	5.5	17	P-110	13506		1695	3140

Liner								
Type	Size	Weight	Grade	Length	PSI	SAX	Top Depth	Bottom Depth
There are no Liner records to display.								

Total Depth: 13528

Packer	
Depth	Brand & Type
There are no Packer records to display.	

Plug	
Depth	Plug Type
There are no Plug records to display.	

Initial Test Data

Test Date	Formation	Oil BBL/Day	Oil-Gravity (API)	Gas MCF/Day	Gas-Oil Ratio Cu FT/BBL	Water BBL/Day	Pumpin or Flowing	Initial Shut-In Pressure	Choke Size	Flow Tubing Pressure
Dec 02, 2017	WOODFORD			1510		4084	FLOWING	119	100	210

Completion and Test Data by Producing Formation									
Formation Name: WOODFORD				Code: 319WDFD			Class: GAS		
Spacing Orders				Perforated Intervals					
Order No		Unit Size		From			To		
665769		640		4820			13379		
674425		MULTIUNIT							
Acid Volumes				Fracture Treatments					
2,466 BARRELS 15% HCL				265,228 BARRELS FLUID, 7,476,562 POUNDS SAND					

Formation	Top
WAPANUCKA LS	3527
UNION VALLEY LS	3763
CANEY SHALE	4332
MAYES LS	4565
WOODFORD SHALE	4772

Were open hole logs run? Yes
 Date last log run: October 23, 2017

 Were unusual drilling circumstances encountered? No
 Explanation:

Other Remarks
There are no Other Remarks.

Lateral Holes
Sec: 26 TWP: 9N RGE: 11E County: HUGHES NW SE NE NE 664 FNL 413 FEL of 1/4 SEC Depth of Deviation: 3910 Radius of Turn: 460 Direction: 360 Total Length: 8481 Measured Total Depth: 13528 True Vertical Depth: 4488 End Pt. Location From Release, Unit or Property Line: 413

FOR COMMISSION USE ONLY
<div>Status: Accepted</div> <div>1138978</div>

API NO. 3506324694
OTC PROD. UNIT NO. 063-222798

PLEASE TYPE OR USE BLACK INK ONLY

NOTE:

Attach copy of original 1002A
if recompletion or reentry.

OKLAHOMA CORPORATION COMMISSION
Oil & Gas Conservation Division
Post Office Box 52000
Oklahoma City, Oklahoma 73152-2000
Rule 165:10-3-25

MAR 05 2018

OKLAHOMA CORPORATION COMMISSION

☒ ORIGINAL
☐ AMENDED (Reason)

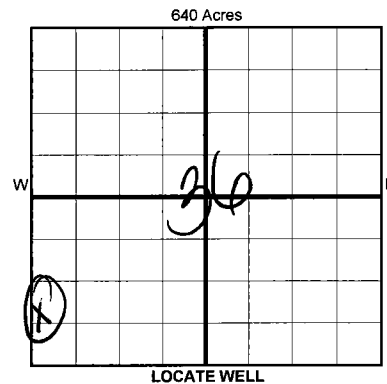
COMPLETION REPORT

TYPE OF DRILLING OPERATION

☐ STRAIGHT HOLE ☐ DIRECTIONAL HOLE ☒ HORIZONTAL HOLE
SERVICE WELL

If directional or horizontal, see reverse for bottom hole location.

COUNTY	HUGHES	SEC	36	TWP	9N	RGE	11E	SPUD DATE	8/18/17
LEASE NAME	ADAMS	WELL NO.	1-35-2601A	DRLG FINISHED DATE	10/11/17	DATE OF WELL COMPLETION	11/28/17	PROD DATE	12/2/17
SW 1/4 NW 1/4 SW 1/4 SW 1/4	921	FSL OF 1/4 SEC	250	RECOMP DATE		ELEVATION Derrick FL	Ground 867	Latitude (if known)	36.8707651
				Longitude (if known)	-96.0638879	OPERATOR NAME	CALYX ENERGY III, LLC	OTC/OCC OPERATOR NO.	23515
ADDRESS 6120 S. YALE, SUITE 1480									
CITY	TULSA	STATE	OK	ZIP	74136				



COMPLETION TYPE

<input checked="" type="checkbox"/> SINGLE ZONE
<input type="checkbox"/> MULTIPLE ZONE
Application Date
COMMINGLED
Application Date
LOCATION
EXCEPTION ORDER
INCREASED DENSITY
ORDER NO.

675192 F.O.
666523, 666471

CASING & CEMENT (Form 1002C must be attached)

TYPE	SIZE	WEIGHT	GRADE	FEET	PSI	SAX	TOP OF CMT
CONDUCTOR	20"			29		15	SURFACE
SURFACE	13-3/8"	48#	J-55	499		335	SURFACE
INTERMEDIATE							
PRODUCTION	5.5"	17#	P-110	13506		1695	3140
LINER							

PACKER @ _____ BRAND & TYPE _____ PLUG @ _____ TYPE _____ PLUG @ _____ TYPE _____
PACKER @ _____ BRAND & TYPE _____ PLUG @ _____ TYPE _____ PLUG @ _____ TYPE _____

TOTAL DEPTH 13,528

COMPLETION & TEST DATA BY PRODUCING FORMATION

FORMATION	WOODFORD						
SPACING & SPACING ORDER NUMBER	640/665769						
CLASS: Oil, Gas, Dry, Inj, Disp, Comm Disp, Svc	GAS						
PERFORATED INTERVALS	4820-13379'						
ACID/VOLUME	2466 Bbls 15% HCl						
FRACTURE TREATMENT (Fluids/Prop Amounts)	265228 Bbls FLUID						
	7,476,562# Sd						

319 WDFD

Monitor Report to FracFocus

Min Gas Allowable (165:10-17-7)

Gas Purchaser/Measurer

BP Energy

☒

OR

First Sales Date

12/2/2017

INITIAL TEST DATA

INITIAL TEST DATE	12/2/2017						
OIL-BBL/DAY	0						
OIL-GRAVITY (API)							
GAS-MCF/DAY	1510						
GAS-OIL RATIO CU FT/BBL							
WATER-BBL/DAY	4084						
PUMPING OR FLOWING	Flowing						
INITIAL SHUT-IN PRESSURE	119						
CHOKE SIZE	100						
FLOW TUBING PRESSURE	210						

AS SUBMITTED

A record of the formations drilled through, and pertinent remarks are presented on the reverse. I declare that I have knowledge of the contents of this report and am authorized by my organization to make this report, which was prepared by me or under my supervision and direction, with the data and facts stated herein to be true, correct, and complete to the best of my knowledge and belief.

	Teresa Wade	3/2/2018	918-949-4224
SIGNATURE	NAME (PRINT OR TYPE)	DATE	PHONE NUMBER
6120 S. Yale, #1480	Tulsa OK 74136		twade@calyxenergy.com
ADDRESS	CITY STATE ZIP		EMAIL ADDRESS

PLEASE TYPE OR USE BLACK INK ONLY
FORMATION RECORD

Give formation names and tops, if available, or descriptions and thickness of formations drilled through. Show intervals cored or drillstem tested.

LEASE NAME ADAMS

WELL NO. 1-35-26WH

NAMES OF FORMATIONS	TOP
WAPANUCKA LS	3,527
UNION VALLEY LS	3,763
CANEY SH	4,332
MAYES LS	4,565
WOODFORD SH	4,772

FOR COMMISSION USE ONLY

ITD on file ☐ YES ☐ NO

APPROVED _____ DISAPPROVED _____

2) Reject Codes _____

Were open hole logs run? ____ yes X no

Date Last log was run 10/23/2017

Was CO₂ encountered? ____ yes X no at what depths? _____

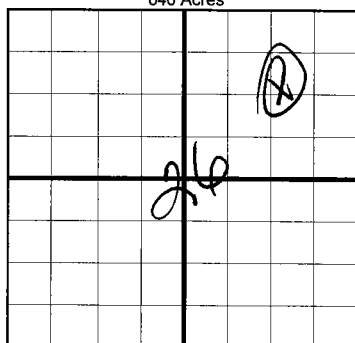
Was H₂S encountered? ____ yes X no at what depths? _____

Were unusual drilling circumstances encountered? ____ yes X no

If yes, briefly explain below _____

Other remarks: _____

640 Acres

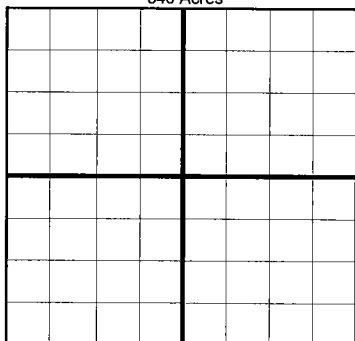


If more than three drainholes are proposed, attach a separate sheet indicating the necessary information.

Direction must be stated in degrees azimuth. Please note, the horizontal drainhole and its end point must be located within the boundaries of the lease or spacing unit.

Directional surveys are required for all drainholes and directional wells.

640 Acres



BOTTOM HOLE LOCATION FOR DIRECTIONAL HOLE

SEC	TWP	RGE	COUNTY
Spot Location	1/4	1/4	1/4
Measured Total Depth	True Vertical Depth	BHL From Lease, Unit, or Property Line:	

BOTTOM HOLE LOCATION FOR HORIZONTAL HOLE: (LATERALS)

LATERAL #1

SEC	26	TWP	9N	RGE	11E	COUNTY	HUGHES
Spot Location	SW 1/4	SW 1/4	NE 1/4	NE 1/4	Feet From 1/4 Sec Lines	FNL	664
Depth of Deviation	3,910	Radius of Turn	460	Direction	NW	Total Length	8,481
Measured Total Depth	13,528	True Vertical Depth	4,488	BHL From Lease, Unit, or Property Line: 413			

LATERAL #2

SEC	TWP	RGE	COUNTY
Spot Location	1/4	1/4	1/4
Depth of Deviation	Radius of Turn	Direction	Total Length
Measured Total Depth	True Vertical Depth	BHL From Lease, Unit, or Property Line:	

LATERAL #3

SEC	TWP	RGE	COUNTY
Spot Location	1/4	1/4	1/4
Depth of Deviation	Radius of Turn	Direction	Total Length
Measured Total Depth	True Vertical Depth	BHL From Lease, Unit, or Property Line:	

API NO. 3506324694
OTC PROD. UNIT NO. 063-222798

PLEASE TYPE OR USE BLACK INK ONLY

NOTE:

Attach copy of original 1002A if recompletion or reentry.

OKLAHOMA CORPORATION COMMISSION

Oil & Gas Conservation Division
Post Office Box 52000
Oklahoma City, Oklahoma 73152-2000
Rule 165:10-3-25

RECEIVED

MAR 05 2018

OKLAHOMA CORPORATION COMMISSION

Form 1002A
Rev. 2009

1016EZ

☒ ORIGINAL
☐ AMENDED (Reason)

COMPLETION REPORT

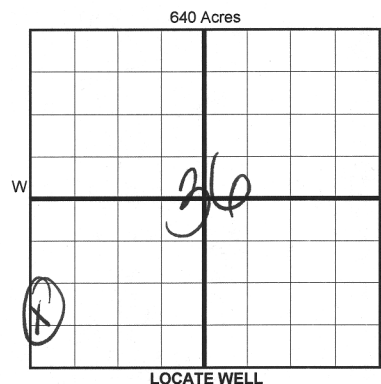
TYPE OF DRILLING OPERATION

☐ STRAIGHT HOLE ☐ DIRECTIONAL HOLE ☒ HORIZONTAL HOLE
☐ SERVICE WELL

If directional or horizontal, see reverse for bottom hole location.

COUNTY	HUGHES	SEC	36	TWP	9N	RGE	11E
LEASE NAME	ADAMS			WELL NO.	1-35-26W-11E		
SW 1/4 NW 1/4 SW 1/4 SW 1/4	FSL OF 1/4 SEC	921	FWL OF 1/4 SEC	250			
ELEVATION Derrick FL	Ground	867	Latitude (if known)	36.8707651		Longitude (if known)	-96.0638879
OPERATOR NAME	CALYX ENERGY III, LLC			OTC/OCC OPERATOR NO.	23515		
ADDRESS	6120 S. YALE, SUITE 1480						
CITY	TULSA		STATE	OK		ZIP	74136

SPUD DATE 8/18/17
DRLG FINISHED DATE 10/11/17
DATE OF WELL COMPLETION 11/28/17
PROD DATE 12/2/17
RECOMP DATE



COMPLETION TYPE

<input checked="" type="checkbox"/> SINGLE ZONE
<input type="checkbox"/> MULTIPLE ZONE
Application Date
COMMINGLED
Application Date
LOCATION
EXCEPTION ORDER
INCREASED DENSITY
ORDER NO.

CASING & CEMENT (Form 1002C must be attached)

TYPE	SIZE	WEIGHT	GRADE	FEET	PSI	SAX	TOP OF CMT
CONDUCTOR	20"			29		15	SURFACE
SURFACE	13-3/8"	48#	J-55	499		335	SURFACE
INTERMEDIATE							
PRODUCTION	5.5"	17#	P-110	13506		1695	3140
LINER							
TOTAL DEPTH						13,528	

PACKER @ BRAND & TYPE PLUG @ TYPE PLUG @ TYPE
PACKER @ BRAND & TYPE PLUG @ TYPE PLUG @ TYPE

COMPLETION & TEST DATA BY PRODUCING FORMATION

FORMATION	WOODFORD						
SPACING & SPACING ORDER NUMBER	640/665769						
CLASS: Oil, Gas, Dry, Inj, Disp, Comm Disp, Svc	GAS						
PERFORATED INTERVALS	4820-13379'						
ACID/VOLUME	2466 Bbls 15% HCl						
FRACTURE TREATMENT (Fluids/Prop Amounts)	265228 Bbls FLUID						
	7,476,562# Sd						

Min Gas Allowable (165:10-17-7)

Gas Purchaser/Measurer
First Sales Date

BP Energy
12/2/2017

INITIAL TEST DATA

INITIAL TEST DATE	12/2/2017						
OIL-BBL/DAY	0						
OIL-GRAVITY (API)							
GAS-MCF/DAY	1510						
GAS-OIL RATIO CU FT/BBL							
WATER-BBL/DAY	4084						
PUMPING OR FLOWING	Flowing						
INITIAL SHUT-IN PRESSURE	119						
CHOKE SIZE	100						
FLOW TUBING PRESSURE	210						

AS SUBMITTED

A record of the formations drilled through, and pertinent remarks are presented on the reverse. I declare that I have knowledge of the contents of this report and am authorized by my organization to make this report, which was prepared by me or under my supervision and direction, with the data and facts stated herein to be true, correct, and complete to the best of my knowledge and belief.

SIGNATURE	TERESA WADE	DATE	3/2/2018	PHONE NUMBER	918-949-4224
ADDRESS	6120 S. Yale, #1480	CITY	Tulsa	STATE	OK
		ZIP	74136	EMAIL ADDRESS	twade@calyxenergy.com

ADDRESS CITY STATE ZIP EMAIL ADDRESS