

Oklahoma Corporation Commission
Oil & Gas Conservation Division
Post Office Box 52000
Oklahoma City, Oklahoma 73152-2000
Rule 165: 10-3-25

Form 1002A

API No.: 35063246520001

Completion Report

Spud Date: February 27, 2017

OTC Prod. Unit No.: 063-218757-0-0000

Drilling Finished Date: April 18, 2017

1st Prod Date: May 19, 2017

Amended

Completion Date: May 10, 2017

Amend Reason: BOTTOM HOLE CORRECTION

Drill Type: DIRECTIONAL HOLE

Min Gas Allowable: Yes

HORIZONTAL HOLE

Well Name: WASHINGTON 2-19-18CH

Purchaser/Measurer: BP ENERGY

Location: HUGHES 19 9N 12E
SW SE SW SE
145 FSL 1915 FEL of 1/4 SEC
Latitude: 35.2322222 Longitude: -96.0763889
Derrick Elevation: 0 Ground Elevation: 785

First Sales Date: 05/19/2017

Operator: J & T OPERATING LLC 23734

6120 S YALE AVE STE 1480
TULSA, OK 74136-4226

Completion Type		Location Exception		Increased Density	
X	Single Zone	Order No		Order No	
	Multiple Zone	668454		There are no Increased Density records to display.	
	Commingled				

Casing and Cement							
Type	Size	Weight	Grade	Feet	PSI	SAX	Top of CMT
CONDUCTOR	20			29		9	SURFACE
SURFACE	13 3/8	54.5	J-55	515		350	SURFACE
INTERMEDIATE	9 5/8	40	J-55	3827		330	2430
PRODUCTION	5 1/2	17	P-110	12316		1345	2430

Liner								
Type	Size	Weight	Grade	Length	PSI	SAX	Top Depth	Bottom Depth
There are no Liner records to display.								

Total Depth: 12330

Packer	
Depth	Brand & Type
There are no Packer records to display.	

Plug	
Depth	Plug Type
There are no Plug records to display.	

Initial Test Data

Test Date	Formation	Oil BBL/Day	Oil-Gravity (API)	Gas MCF/Day	Gas-Oil Ratio Cu FT/BBL	Water BBL/Day	Pumpin or Flowing	Initial Shut-In Pressure	Choke Size	Flow Tubing Pressure
May 21, 2017	MISSISSIPPIAN			696		2860	FLOWING	446	60/64	400

Completion and Test Data by Producing Formation

Formation Name: MISSISSIPPIANCode: 359MSSPClass: GAS

Spacing Orders

Order No	Unit Size
660420	640
674759	MULTIUNIT

Perforated Intervals

From	To
4222	12226

Acid Volumes

1,744 BARRELS 15% HCL

Fracture Treatments

237,453 BARRELS FLUID, 7,467,262 POUNDS SAND
--

Formation	Top	Were open hole logs run? No Date last log run: April 24, 2017 Were unusual drilling circumstances encountered? No Explanation:
WAPANUCKA LS	3236	
UNION VALLEY LS	3406	
CANEY SHALE	4140	

Other Remarks

LOST HOLE AT 3,854'

Bottom Holes

Sec: 19 TWP: 9N RGE: 12E County: HUGHES
SW SE SW SE
198 FSL 2017 FEL of 1/4 SEC
Depth of Deviation: 0 Radius of Turn: 0 Direction: 0 Total Length: 0
Measured Total Depth: 3854 True Vertical Depth: 3751 End Pt. Location From Release, Unit or Property Line: 198

Lateral Holes

Sec: 18 TWP: 9N RGE: 12E County: HUGHES
SE NW SW NE
1766 FNL 1993 FEL of 1/4 SEC
Depth of Deviation: 3316 Radius of Turn: 1093 Direction: 1 Total Length: 7921
Measured Total Depth: 12330 True Vertical Depth: 3795 End Pt. Location From Release, Unit or Property Line: 1766

FOR COMMISSION USE ONLY

Status: Accepted

API NO. 3506324652

OTC PROD.

UNIT NO.

PLEASE TYPE OR USE BLACK INK ONLY

NOTE:

OKLAHOMA CORPORATION COMMISSION

Oil & Gas Conservation Division

Post Office Box 52000

Oklahoma City, Oklahoma 73152-2000

Rule 165:10-3-25

JUL 17 2017

Form 1002A
Rev. 2009☐ ORIGINAL
☒ AMENDED (Reason)

BHL Correction

COMPLETION REPORT

TYPE OF DRILLING OPERATION

☐ STRAIGHT HOLE ☒ DIRECTIONAL HOLE ☒ HORIZONTAL HOLE

If directional or horizontal, see reverse for bottom hole location.

COUNTY HUGHES SEC 19 TWP 9N RGE 12E

LEASE NAME WASHINGTON

SW 1/4 SE 1/4 SW 1/4 SE 1/4 FSL OF 1/4 SEC 145

ELEVATION N Derrick Ground 785 Latitude (if known) 35.232222

OPERATOR NAME J & T OPERATING, LLC

ADDRESS 6120 S. YALE #1480

CITY TULSA

STATE OK

ZIP 74136

COMPLETION TYPE

☒ SINGLE ZONE☐ MULTIPLE ZONE

Application Date

COMINGLED

Application Date

LOCATION

EXCEPTION ORDER

INCREASED DENSITY

ORDER NO.

CASING & CEMENT (Form 1002C must be attached)

TYPE	SIZE	WEIGHT	GRADE	FEET	PSI	SAX	TOP OF CMT
CONDUCTOR	20			29		9	SURFACE
SURFACE	13-3/8"	54.5	J-55	515		350	SURFACE
INTERMEDIATE	9-5/8"	40	J-55	3,827		330	2,430
PRODUCTION	5-1/2"	17	P-110	12,316		1345	2,430
LINER							
						TOTAL DEPTH	12,330

PACKER @ BRAND & TYPE

PLUG @

TYPE

PLUG @

TYPE

TOTAL

12,330

PACKER @ BRAND & TYPE

PLUG @

TYPE

PLUG @

TYPE

COMPLETION & TEST DATA BY PRODUCING FORMATION

FORMATION	MISSISSIPPIAN						
SPACING & SPACING ORDER NUMBER	640 - 660420						
CLASS: Oil, Gas, Dry, Inj, Disp, Comm Disp, Svc	GAS						
PERFORATED INTERVALS	4222-12226						
ACID/VOLUME	1744 Bbls 15% HCl						
FRACTURE TREATMENT (Fluids/Prop Amounts)	237,453 Bbls Fluid						
	7,467,262 # Sd						

Min Gas Allowable

(165:10-17-7)

Gas Purchaser/Measurer

BP Energy

☒

OR

First Sales Date

5/19/2017

INITIAL TEST DATA

Oil Allowable (165:10-13-3)

INITIAL TEST DATE	5/21/2017						
OIL-BBL/DAY	0						
OIL-GRAVITY (API)							
GAS-MCF/DAY	696						
GAS-OIL RATIO CU FT/BBL							
WATER-BBL/DAY	2860						
PUMPING OR FLOWING	Flowing						
INITIAL SHUT-IN PRESSURE	446						
CHOKE SIZE	60/64						
FLOW TUBING PRESSURE	400						

AS SUBMITTED

A record of the formations drilled through, and pertinent remarks are presented on the reverse. I declare that I have knowledge of the contents of this report and am authorized by my organization to make this report, which was prepared by me or under my supervision and direction, with the data and facts stated herein to be true, correct, and complete to the best of my knowledge and belief.

SIGNATURE

Teresa Wade

7/13/2017

918-949-4224

6120 S. Yale #1480

Tulsa

NAME (PRINT OR TYPE)

DATE

PHONE NUMBER

ADDRESS

CITY

OK

74136

twade@calyxenergy.com

STATE ZIP

EMAIL ADDRESS

PLEASE TYPE OR USE BLACK INK ONLY
FORMATION RECORD

Give formation names and tops, if available, or descriptions and thickness of formations drilled through. Show intervals cored or drillstem tested.

LEASE NAME WASHINGTON

WELL NO. 2-19-18CH

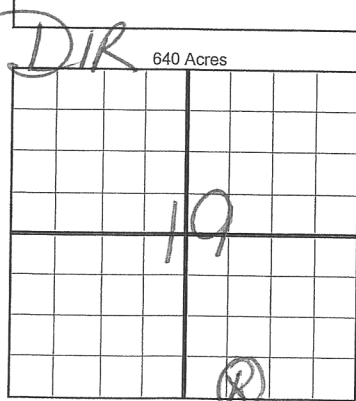
NAMES OF FORMATIONS	TOP
	MD
Wapanucka Ls	3,236
Union Valley Ls	3,406
Caney Shale	4,140

FOR COMMISSION USE ONLY	
ITD on file <input type="checkbox"/> YES <input type="checkbox"/> NO	
APPROVED _____	DISAPPROVED _____
2) Reject Codes	

Were open hole logs run?	yes	<input checked="" type="checkbox"/> no
Date Last log was run	4/24/2017	
Was CO ₂ encountered?	yes	<input checked="" type="checkbox"/> no at what depths? _____
Was H ₂ S encountered?	yes	<input checked="" type="checkbox"/> no at what depths? _____
Were unusual drilling circumstances encountered?	yes	<input checked="" type="checkbox"/> no
If yes, briefly explain below		

Other remarks:

Lost hole at 3854'



If more than three drainholes are proposed, attach a separate sheet indicating the necessary information.

Direction must be stated in degrees azimuth. Please note, the horizontal drainhole and its end point must be located within the boundaries of the lease or spacing unit.

Directional surveys are required for all drainholes and directional wells.

BOTTOM HOLE LOCATION FOR DIRECTIONAL HOLE

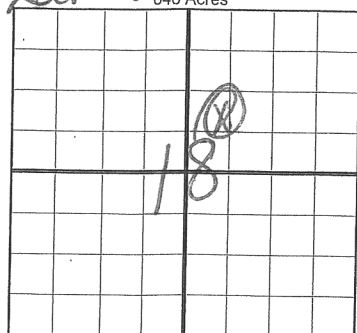
SEC 19	TWP 9N	RGE 12E	COUNTY Hughes
Spot Location SW 1/4	SE 1/4	SW 1/4	SE 1/4
Measured Total Depth	3,854'	True Vertical Depth	3,751'
		Feet From 1/4 Sec Lines	FSL 198
		BHL From Lease, Unit, or Property Line: 198	

BOTTOM HOLE LOCATION FOR HORIZONTAL HOLE: (LATERALS)

LATERAL #1			
SEC 18	TWP 9N	RGE 12E	COUNTY HUGHES
Spot Location SE 1/4	NW 1/4	SW 1/4	NE 1/4
Depth of Deviation	3,316	Radius of Turn	1093
Measured Total Depth	12,330	True Vertical Depth	3,795
		Feet From 1/4 Sec Lines	FNL 1766
		Direction	1 0.8 deg
		Total Length	7921'
		BHL From Lease, Unit, or Property Line: 1766	

LATERAL #2			
SEC	TWP	RGE	COUNTY
Spot Location	1/4	1/4	1/4
Depth of Deviation		Radius of Turn	
Measured Total Depth		True Vertical Depth	
		Feet From 1/4 Sec Lines	FNL
		Direction	Total Length
		BHL From Lease, Unit, or Property Line:	

LATERAL #3			
SEC	TWP	RGE	COUNTY
Spot Location	1/4	1/4	1/4
Depth of Deviation		Radius of Turn	
Measured Total Depth		True Vertical Depth	
		Feet From 1/4 Sec Lines	FSL
		Direction	Total Length
		BHL From Lease, Unit, or Property Line:	



API NO. 3506324652
OTC PROD. UNIT NO. 663-2187570-0000

PLEASE TYPE OR USE BLACK INK ONLY
NOTE:

Attach copy of original 1002A
if recompletion or reentry.

☐ ORIGINAL
☒ AMENDED (Reason)

BHL Correction

OKLAHOMA CORPORATION COMMISSION
Oil & Gas Conservation Division
Post Office Box 52000
Oklahoma City, Oklahoma 73152-2000
Rule 165:10-3-25

COMPLETION REPORT

RECEIVED

JUL 17 2017

OKLAHOMA CORPORATION COMMISSION

Form 1002A
Rev. 2009

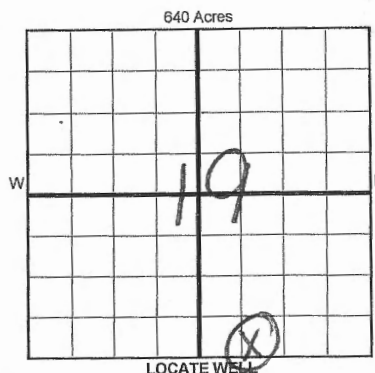
1016EZ

TYPE OF DRILLING OPERATION

☐ STRAIGHT HOLE ☒ DIRECTIONAL HOLE ☒ HORIZONTAL HOLE
SERVICE WELL

If directional or horizontal, see reverse for bottom hole location.

COUNTY	HUGHES	SEC	19	TWP	9N	RGE	12E	SPUD DATE	2-27-17
LEASE NAME	WASHINGTON			WELL NO.	2-19-18CH			DRLG FINISHED DATE	4-18-17
SW 1/4 SE 1/4 SW 1/4 SE 1/4	FSL OF 1/4 SEC 145			FEL OF 1/4 SEC	1945			DATE OF WELL COMPLETION	5-10-17
ELEVATION	Ground 785			Latitude (if known)	35.2322222			Longitude (if known)	-96.0763889
OPERATOR NAME	CALYX J&T OPERATING, LLC			OTC/OCC OPERATOR NO.	2351523734				
ADDRESS	6120 S. YALE #1480								
CITY	TULSA		STATE	OK		ZIP	74136		



COMPLETION TYPE

<input checked="" type="checkbox"/> SINGLE ZONE
<input type="checkbox"/> MULTIPLE ZONE
Application Date
<input type="checkbox"/> COMMINGLED
Application Date
LOCATION
EXCEPTION ORDER
INCREASED DENSITY
ORDER NO.

CASING & CEMENT (Form 1002C must be attached)

TYPE	SIZE	WEIGHT	GRADE	FEET	PSI	SAX	TOP OF CMT
CONDUCTOR	20			29		9	SURFACE
SURFACE	13-3/8"	54.5	J-55	515		350	SURFACE
INTERMEDIATE	9-5/8"	40	J-55	3,827		330	2,430
PRODUCTION	5-1/2"	17	P-110	12,316		1345	2,430
LINER							
						TOTAL DEPTH	12,330

PACKER @ _____ BRAND & TYPE _____ PLUG @ _____ TYPE _____ PLUG @ _____ TYPE _____
PACKER @ _____ BRAND & TYPE _____ PLUG @ _____ TYPE _____ PLUG @ _____ TYPE _____

COMPLETION & TEST DATA BY PRODUCING FORMATION

FORMATION	MISSISSIPPIAN						
SPACING & SPACING ORDER NUMBER	640 - 660420						
CLASS: Oil, Gas, Dry, Inj, Disp, Comm Disp, Svc	GAS						
PERFORATED INTERVALS	4222-12226						
ACID/VOLUME	1744 Bbls 15% HCl						
FRACTURE TREATMENT (Fluids/Prop Amounts)	237,453 Bbls Fluid						
	7,467,262 # Sd						

Min Gas Allowable (165:10-17-7)

Gas Purchaser/Measurer

BP Energy



OR
Oil Allowable (165:10-13-3)

First Sales Date

5/19/2017

INITIAL TEST DATA

INITIAL TEST DATE	5/21/2017						
OIL-BBL/DAY	0						
OIL-GRAVITY (API)							
GAS-MCF/DAY	696						
GAS-OIL RATIO CU FT/BBL							
WATER-BBL/DAY	2860						
PUMPING OR FLOWING	Flowing						
INITIAL SHUT-IN PRESSURE	446						
CHOKE SIZE	60/64						
FLOW TUBING PRESSURE	400						

AS SUBMITTED

A record of the formations drilled through, and pertinent remarks are presented on the reverse. I declare that I have knowledge of the contents of this report and am authorized by my organization to make this report, which was prepared by me or under my supervision and direction, with the data and facts stated herein to be true, correct, and complete to the best of my knowledge and belief.

SIGNATURE	Teresa Wade	DATE	7/13/2017	PHONE NUMBER	918-949-4224
6120 S. Yale #1480	Tulsa	OK	74136	twade@calyxenergy.com	
ADDRESS	CITY	STATE	ZIP	EMAIL ADDRESS	

E2
E2

SCANNED