

Oklahoma Corporation Commission
Oil & Gas Conservation Division
Post Office Box 52000
Oklahoma City, Oklahoma 73152-2000
Rule 165: 10-3-25

Form 1002A

API No.: 35063246530001

Completion Report

Spud Date: February 26, 2017

OTC Prod. Unit No.: 063-218758-0-0000

Drilling Finished Date: March 22, 2017

Amended

1st Prod Date: May 23, 2017

Amend Reason: BOTTOM HOLE CORRECTION

Completion Date: May 10, 2017

Drill Type: DIRECTIONAL HOLE

HORIZONTAL HOLE

Well Name: WASHINGTON 1-19-18WH

Purchaser/Measurer: BP ENERGY

Location: HUGHES 19 9N 12E
SW SE SW SE
145 FSL 1915 FEL of 1/4 SEC
Latitude: 35.2322222 Longitude: -96.0763889
Derrick Elevation: 0 Ground Elevation: 785

First Sales Date: 05/23/2017

Operator: J & T OPERATING LLC 23734

6120 S YALE AVE STE 1480
TULSA, OK 74136-4226

Completion Type		Location Exception		Increased Density	
X	Single Zone	Order No		Order No	
	Multiple Zone	667474		There are no Increased Density records to display.	
	Commingle				

Casing and Cement							
Type	Size	Weight	Grade	Feet	PSI	SAX	Top of CMT
CONDUCTOR	20			29		9	SURFACE
SURFACE	13 3/8	54.5	J-55	515		350	SURFACE
INTERMEDIATE	9 5/8	40	J-55	3804		185	2980
PRODUCTION	5 1/2	17	P-110	13095		1470	2980

Liner								
Type	Size	Weight	Grade	Length	PSI	SAX	Top Depth	Bottom Depth
There are no Liner records to display.								

Total Depth: 13100

Packer	
Depth	Brand & Type
There are no Packer records to display.	

Plug	
Depth	Plug Type
There are no Plug records to display.	

Initial Test Data

Test Date	Formation	Oil BBL/Day	Oil-Gravity (API)	Gas MCF/Day	Gas-Oil Ratio Cu FT/BBL	Water BBL/Day	Pumpin or Flowing	Initial Shut-In Pressure	Choke Size	Flow Tubing Pressure
May 26, 2017	WOODFORD			374		2197	FLOWING	162	64/64	449

Completion and Test Data by Producing Formation

Formation Name: WOODFORD

Code: 319WDFD

Class: GAS

Spacing Orders

Order No	Unit Size
660420	640
667142	MULTIUNIT

Perforated Intervals

From	To
4469	12959

Acid Volumes

3,161 BARRELS 15% HCL

Fracture Treatments

261,516 BARRELS FLUID, 5,581,476 POUNDS SAND

Other Remarks

LOST HOLE AT 4,383'

Bottom Holes

Sec: 19 TWP: 9N RGE: 12E County: HUGHES
SW SE SW SE
177 FSL 1667 FEL of 1/4 SEC
Depth of Deviation: 0 Radius of Turn: 0 Direction: 0 Total Length: 0
Measured Total Depth: 4383 True Vertical Depth: 4285 End Pt. Location From Release, Unit or Property Line: 177

Lateral Holes

Sec: 18 TWP: 9N RGE: 12E County: HUGHES
NW NE SW NE
1642 FNL 1717 FEL of 1/4 SEC
Depth of Deviation: 3892 Radius of Turn: 874 Direction: 360 Total Length: 8334
Measured Total Depth: 13100 True Vertical Depth: 4090 End Pt. Location From Release, Unit or Property Line: 1642

FOR COMMISSION USE ONLY

Status: Accepted

API NO. 3506324653

OTC PROD. UNIT NO. 063-2181580-0000

PLEASE TYPE OR USE BLACK INK ONLY
NOTE:Attach copy of original 1002A
if recompletion or reentry.

OKLAHOMA CORPORATION COMMISSION

Oil & Gas Conservation Division
Post Office Box 52000
Oklahoma City, Oklahoma 73152-2000
Rule 165:10-3-25RECEIVED Form 1002A
Rev. 2009

JUL 17 2017

OKLAHOMA CORPORATION
COMMISSION☐ ORIGINAL
☒ AMENDED (Reason)

BHL Correction

COMPLETION REPORT

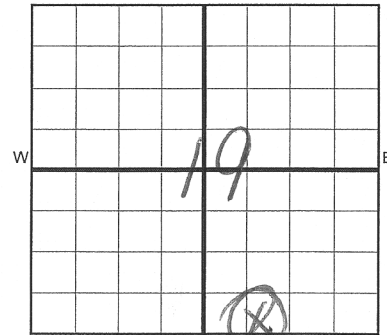
TYPE OF DRILLING OPERATION

☐ STRAIGHT HOLE ☒ DIRECTIONAL HOLE ☒ HORIZONTAL HOLE
☐ SERVICE WELL

If directional or horizontal, see reverse for bottom hole location.

SPUD DATE 2-26-17
DRLG FINISHED DATE 3-22-17
DATE OF WELL COMPLETION 5-10-17
1st PROD DATE 5-23-17
RECOMP DATE
Longitude (if known) -96.0763889
OTC/OCC OPERATOR NO. 23734COUNTY HUGHES SEC 19 TWP 9N RGE 12E
LEASE NAME WASHINGTON
SW 1/4 SE 1/4 SW 1/4 SE 1/4 FSL OF 1/4 SEC 145 FEL OF 1/4 SEC 1915
ELEVATION N Derrick Ground 785 Latitude (if known) 35.2322222
OPERATOR NAME J & T OPERATING, LLC
ADDRESS 6120 S. YALE #1480
CITY TULSA STATE OK ZIP 74136

640 Acres



LOCATE WELL

COMPLETION TYPE

☒ SINGLE ZONE
☐ MULTIPLE ZONE
Application Date
COMMINGLED
Application Date
LOCATION
EXCEPTION ORDER
INCREASED DENSITY
ORDER NO. 661924/661838

CASING & CEMENT (Form 1002C must be attached)

TYPE	SIZE	WEIGHT	GRADE	FEET	PSI	SAX	TOP OF CMT
CONDUCTOR	20			29		9	SURFACE
SURFACE	13-3/8"	54.5	J-55	515		350	SURFACE
INTERMEDIATE	9-5/8"	40	J-55	3,804		185	2980'
PRODUCTION	5-1/2"	17	P-110	13,095		1470	2980'
LINER							
				TOTAL DEPTH		13,100	

PACKER @ _____ BRAND & TYPE _____ PLUG @ _____ TYPE _____ PLUG @ _____ TYPE _____
PACKER @ _____ BRAND & TYPE _____ PLUG @ _____ TYPE _____ PLUG @ _____ TYPE _____

COMPLETION & TEST DATA BY PRODUCING FORMATION

FORMATION	WOODFORD						
SPACING & SPACING ORDER NUMBER	640 - 660420						
CLASS: Oil, Gas, Dry, Inj, Disp, Comm Disp, Svc	GAS						
PERFORATED INTERVALS	4469-12959						
ACID/VOLUME	3161 Bbls 15% HCl						
FRACTURE TREATMENT (Fluids/Prop Amounts)	261,516 Bbls Fluid						
	5,581,476 # Sd						

Min Gas Allowable (165:10-17-7)

Gas Purchaser/Measurer

BP Energy

☐ OR

First Sales Date

5/23/2017

INITIAL TEST DATA

Oil Allowable (165:10-13-3)

INITIAL TEST DATE	5/26/2017						
OIL-BBL/DAY	0						
OIL-GRAVITY (API)							
GAS-MCF/DAY	374						
GAS-OIL RATIO CU FT/BBL							
WATER-BBL/DAY	2197						
PUMPING OR FLOWING	Flowing						
INITIAL SHUT-IN PRESSURE	162						
CHOKE SIZE	64/64						
FLOW TUBING PRESSURE	449						

AS SUBMITTED

A record of the formations drilled through, and pertinent remarks are presented on the reverse. I declare that I have knowledge of the contents of this report and am authorized by my organization to make this report, which was prepared by me or under my supervision and direction, with the data and facts stated herein to be true, correct, and complete to the best of my knowledge and belief.

SIGNATURE

6120 S. Yale #1480

ADDRESS

Teresa Wade

NAME (PRINT OR TYPE)

Tulsa

CITY

OK

STATE

74136

ZIP

7/13/2017

DATE

918-949-4224

PHONE NUMBER

twade@calyxenergy.com

EMAIL ADDRESS

PLEASE TYPE OR USE BLACK INK ONLY
FORMATION RECORD

Give formation names and tops, if available, or descriptions and thickness of formations drilled through. Show intervals cored or drillstem tested.

LEASE NAME WASHINGTON WELL NO. 1-19-18WH

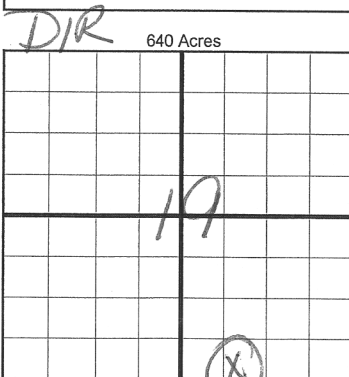
NAMES OF FORMATIONS	TOP
	MD
Wapanucka Ls	3,253
Union Valley Ls	3,425
Caney Shale	3,998
Woodford Shale	4,449

FOR COMMISSION USE ONLY	
ITD on file <input type="checkbox"/> YES <input type="checkbox"/> NO	
APPROVED _____	DISAPPROVED _____
2) Reject Codes	

Were open hole logs run?	yes	<input checked="" type="checkbox"/> no
Date Last log was run	4/24/2017	
Was CO ₂ encountered?	yes	<input checked="" type="checkbox"/> no at what depths? _____
Was H ₂ S encountered?	yes	<input checked="" type="checkbox"/> no at what depths? _____
Were unusual drilling circumstances encountered?	yes	<input checked="" type="checkbox"/> no
If yes, briefly explain below		

Other remarks:

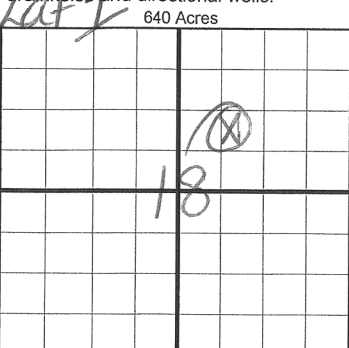
Lost hole at 4383'



If more than three drainholes are proposed, attach a separate sheet indicating the necessary information.

Direction must be stated in degrees azimuth.
Please note, the horizontal drainhole and its end point must be located within the boundaries of the lease or spacing unit.

Directional surveys are required for all drainholes and directional wells.



BOTTOM HOLE LOCATION FOR DIRECTIONAL HOLE

SEC 19	TWP 9N	RGE 12E	COUNTY Hughes
Spot Location SW 1/4 SE 1/4	SW 1/4 SE 1/4	FEET FROM 1/4 SEC LINES	FSL 177
Measured Total Depth 4,383'	True Vertical Depth 4,285'	BHL FROM LEASE, UNIT, OR PROPERTY LINE:	177'

BOTTOM HOLE LOCATION FOR HORIZONTAL HOLE: (LATERALS)

LATERAL #1	SEC 18	TWP 9N	RGE 12E	COUNTY HUGHES
Spot Location W2NW	NE 1/4 SW 1/4	NE 1/4	FEET FROM 1/4 SEC LINES	FNL 1642
Depth of Deviation 3,892	Radius of Turn 874	Direction 360 0.19 deg	Total Length 8,334	
Measured Total Depth 13,100	True Vertical Depth 4,090	BHL FROM LEASE, UNIT, OR PROPERTY LINE:	1642	

LATERAL #2

SEC	TWP	RGE	COUNTY
Spot Location 1/4	1/4	1/4	1/4
Depth of Deviation	Radius of Turn	Direction	Total Length
Measured Total Depth	True Vertical Depth	BHL FROM LEASE, UNIT, OR PROPERTY LINE:	

LATERAL #3

SEC	TWP	RGE	COUNTY
Spot Location 1/4	1/4	1/4	1/4
Depth of Deviation	Radius of Turn	Direction	Total Length
Measured Total Depth	True Vertical Depth	BHL FROM LEASE, UNIT, OR PROPERTY LINE:	

API NO. 3506324653
OTC PROD. UNIT NO. 023-218758-0-0000

PLEASE TYPE OR USE BLACK INK ONLY
NOTE:

Attach copy of original 1002A
if recompletion or reentry.

OKLAHOMA CORPORATION COMMISSION
Oil & Gas Conservation Division
Post Office Box 52000
Oklahoma City, Oklahoma 73152-2000
Rule 165:10-3-25

RECEIVED
JUL 17 2017 1016EZ
OKLAHOMA CORPORATION COMMISSION

☐ ORIGINAL
☒ AMENDED (Reason)

BHL Correction

COMPLETION REPORT

TYPE OF DRILLING OPERATION

☐ STRAIGHT HOLE ☒ DIRECTIONAL HOLE ☒ HORIZONTAL HOLE
SERVICE WELL

If directional or horizontal, see reverse for bottom hole location.

COUNTY	HUGHES	SEC	19	TWP	9N	RGE	12E	SPUD DATE	2-26-17
LEASE NAME	WASHINGTON			WELL NO.	1-19-18WH			DRLG FINISHED DATE	3-22-17
SW 1/4 SE 1/4 SW 1/4 SE 1/4	FSL OF 1/4 SEC 145			FEL OF 1/4 SEC	1915			DATE OF WELL COMPLETION	5-10-17
ELEVATION N Derrick	Ground 785			Latitude (if known)	35.2322222			RECOMP DATE	
OPERATOR NAME	CALYX J&T OPERATING, LLC			Longitude (if known)	-96.0763889			ST PROD DATE	5-23-17
ADDRESS	6120 S. YALE #1480								
CITY	TULSA		STATE	OK		ZIP	74136		

640 Acres

W									E

LOCATE WELL

COMPLETION TYPE

<input checked="" type="checkbox"/> SINGLE ZONE
<input type="checkbox"/> MULTIPLE ZONE
Application Date
COMINGLED
Application Date
LOCATION
EXCEPTION ORDER
INCREASED DENSITY
ORDER NO.

CASING & CEMENT (Form 1002C must be attached)

TYPE	SIZE	WEIGHT	GRADE	FEET	PSI	SAX	TOP OF CMT
CONDUCTOR	20			29		9	SURFACE
SURFACE	13-3/8"	54.5	J-55	515		350	SURFACE
INTERMEDIATE	9-5/8"	40	J-55	3,804		185	2980'
PRODUCTION	5-1/2"	17	P-110	13,095		1470	2980'
LINER							
TOTAL DEPTH						13,100	

PACKER @ BRAND & TYPE

PLUG @ TYPE

PLUG @ TYPE

TOTAL DEPTH 13,100

PACKER @ BRAND & TYPE

PLUG @ TYPE

PLUG @ TYPE

COMPLETION & TEST DATA BY PRODUCING FORMATION

FORMATION	WOODFORD
SPACING & SPACING ORDER NUMBER	640 - 660420
CLASS: Oil, Gas, Dry, Inj, Disp, Comm Disp, Svc	GAS
PERFORATED INTERVALS	4469-12959
ACID/VOLUME	3161 Bbls 15% HCl
FRACTURE TREATMENT (Fluids/Prop Amounts)	261,516 Bbls Fluid
	5,581,476 # Sd

Min Gas Allowable (165:10-17-7)

Gas Purchaser/Measurer
First Sales Date

BP Energy
5/23/2017

INITIAL TEST DATA

INITIAL TEST DATE	5/26/2017
OIL-BBL/DAY	0
OIL-GRAVITY (API)	
GAS-MCF/DAY	374
GAS-OIL RATIO CU FT/BBL	
WATER-BBL/DAY	2197
PUMPING OR FLOWING	Flowing
INITIAL SHUT-IN PRESSURE	162
CHOKE SIZE	64/64
FLOW TUBING PRESSURE	449

AS SUBMITTED

A record of the formations drilled through, and pertinent remarks are presented on the reverse. I declare that I have knowledge of the contents of this report and am authorized by my organization to make this report, which was prepared by me or under my supervision and direction, with the data and facts stated herein to be true, correct, and complete to the best of my knowledge and belief.

SIGNATURE: Teresa Wade
6120 S. Yale #1480
ADDRESS: Tulsa
CITY: OK
STATE: 74136
ZIP: twade@calyxenergy.com
DATE: 7/13/2017
PHONE NUMBER: 918-949-4224
EMAIL ADDRESS: