

Oklahoma Corporation Commission
Oil & Gas Conservation Division
Post Office Box 52000
Oklahoma City, Oklahoma 73152-2000
Rule 165: 10-3-25

Form 1002A

API No.: 35107228380001

Completion Report

Spud Date: November 02, 1993

OTC Prod. Unit No.:

Drilling Finished Date: November 04, 1993

Amended

1st Prod Date: January 15, 1997

Amend Reason: DEEPEN / CONVERT TO DISPOSAL WELL

Completion Date: January 07, 1997

Recomplete Date: May 19, 2015

Drill Type: STRAIGHT HOLE

SERVICE WELL

Well Name: PUCKETT 1-23

Purchaser/Measurer:

Location: OKFUSKEE 23 10N 11E
C NW NW NE
2310 FSL 330 FWL of 1/4 SEC
Derrick Elevation: 0 Ground Elevation: 0

First Sales Date:

Operator: CHAPARRAL ENERGY LLC 16896

701 CEDAR LAKE BLVD
OKLAHOMA CITY, OK 73114-7800

Completion Type	Location Exception	Increased Density
Single Zone	Order No	Order No
Multiple Zone	There are no Location Exception records to display.	There are no Increased Density records to display.
Commingled		

Casing and Cement							
Type	Size	Weight	Grade	Feet	PSI	SAX	Top of CMT
SURFACE	7	17	USED	310		40	SURFACE
PRODUCTION	4 1/2	9.5	USED	2532		125	1820

Liner								
Type	Size	Weight	Grade	Length	PSI	SAX	Top Depth	Bottom Depth
There are no Liner records to display.								

Total Depth: 2918

Packer		Plug	
Depth	Brand & Type	Depth	Plug Type
2209	ARROW SEAT TITE	There are no Plug records to display.	

Initial Test Data

Test Date	Formation	Oil BBL/Day	Oil-Gravity (API)	Gas MCF/Day	Gas-Oil Ratio Cu FT/BBL	Water BBL/Day	Pumpin or Flowing	Initial Shut- In Pressure	Choke Size	Flow Tubing Pressure
-----------	-----------	----------------	----------------------	----------------	----------------------------	------------------	----------------------	---------------------------------	---------------	-------------------------

There are no Initial Data records to display.

Completion and Test Data by Producing Formation

Formation Name: GILCREASECode: 403GLCRClass: DISP

Spacing Orders		Perforated Intervals	
Order No	Unit Size	From	To
There are no Spacing Order records to display.		2263	2455

Acid Volumes		Fracture Treatments	
1,500 GALLONS 15% HCL		There are no Fracture Treatments records to display.	

Formation Name: UNION VALLEY-CROMWELLCode: 402UVCMLClass: DISP

Spacing Orders		Perforated Intervals	
Order No	Unit Size	From	To
There are no Spacing Order records to display.		There are no Perf. Intervals records to display.	

Acid Volumes		Fracture Treatments	
ACIDIZED WITH GILCREASE		There are no Fracture Treatments records to display.	

Formation	Top
BARTLESVILLE	1200
SAVANNAH	1800
BOOCH	2085
GILCREASE	2260
UNION VALLEY / CROMWELL	2800

Were open hole logs run? No
Date last log run:

Were unusual drilling circumstances encountered? No
Explanation:

Other Remarks

UIC PERMIT NUMBER 640855. OCC - THIS WELL IS AN OPEN HOLE COMPLETION IN THE UNION VALLEY / CROMWELL FROM BOTTOM OF THE 4 1/2" CASING AT 2,532' TO TOTAL DEPTH AT 2,918'. WELL IS ALSO PERFORATED IN GILCREASE 2,263' - 2,455'.

FOR COMMISSION USE ONLY

1139096

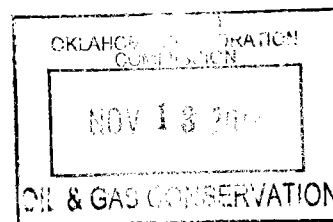
Status: Accepted

API NO. 107-22838
OTC PROD.
UNIT NO.

PLEASE TYPE OR USE BLACK INK ONLY
NOTE:

Attach copy of original 1002A
if recompletion or reentry.

OKLAHOMA CORPORATION COMMISSION
Oil & Gas Conservation Division
Post Office Box 52000
Oklahoma City, Oklahoma 73152-2000
Rule 165:10-3-25



Form 1002A
Rev. 2009

☐ ORIGINAL
☒ AMENDED (Reason)

Deepen/Convert to Disposal Well

COMPLETION REPORT

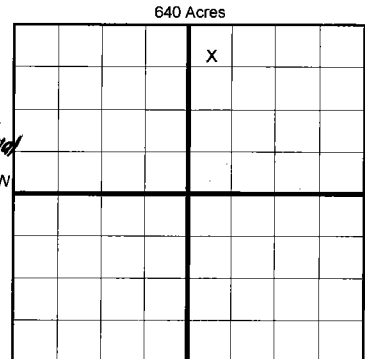
TYPE OF DRILLING OPERATION

☒ STRAIGHT HOLE ☐ DIRECTIONAL HOLE ☐ HORIZONTAL HOLE
☒ SERVICE WELL

If directional or horizontal, see reverse for bottom hole location.

COUNTY	Okfuskee	SEC	23	TWP	10N	RGE	11E
LEASE NAME	Puckett			WELL NO.	1-23		
C	1/4 NW	1/4 NW	1/4 NE	1/4	FSL OF 1/4 SEC	2310	FWL OF 1/4 SEC
ELEVATION	Ground		Latitude (if known)		Longitude (if known)		
OPERATOR NAME	Chaparral Energy LLC			OTC/OCC OPERATOR NO.	16896		
ADDRESS	701 Cedar Lake Blvd						
CITY	Oklahoma City		STATE	OK	ZIP	73114	

SPUD DATE 11-2-1993
DRLG FINISHED DATE 11-4-1993
DATE OF WELL COMPLETION 1-7-1997
1st PROD DATE 1-15-1997
RECOMP DATE 5-19-2015



LOCATE WELL

COMPLETION TYPE

<input type="checkbox"/> SINGLE ZONE
<input type="checkbox"/> MULTIPLE ZONE
Application Date
COMINGLED
Application Date
LOCATION
EXCEPTION ORDER
INCREASED DENSITY
ORDER NO.

CASING & CEMENT (Form 1002C must be attached)

TYPE	SIZE	WEIGHT	GRADE	FEET	PSI	SAX	TOP OF CMT
CONDUCTOR							
SURFACE	7	17	used	310		40	Surface
INTERMEDIATE							
PRODUCTION	4 1/2	9.5	used	2532		125	1820
LINER							

PACKER @ 2,209 BRAND & TYPE Arrow Seal

PACKER @ BRAND & TYPE PLUG @

COMPLETION & TEST DATA BY PRODUCING FORMATION

FORMATION	Gilcrease	Union Valley/Cramwell
SPACING & SPACING ORDER NUMBER		
CLASS: Oil, Gas, Dry, Inj, Disp, Comm Disp, Svc		
PERFORATED INTERVALS	2263-2267 2330-2336	2450-2455 open hole
ACID/VOLUME	1500 gals 15% HCL	Acidized @ Gilcrease
FRACTURE TREATMENT (Fluids/Prop Amounts)		

Min Gas Allowable (165:10-17-7)

Gas Purchaser/Measurer

OR

First Sales Date

INITIAL TEST DATA

INITIAL TEST DATE	
OIL-BBL/DAY	
OIL-GRAVITY (API)	
GAS-MCF/DAY	
GAS-OIL RATIO CU FT/BBL	
WATER-BBL/DAY	
PUMPING OR FLOWING	
INITIAL SHUT-IN PRESSURE	
CHOKE SIZE	
FLOW TUBING PRESSURE	

AS SUBMITTED

A record of the formations drilled through, and pertinent remarks are presented on the reverse. I declare that I have knowledge of the contents of this report and am authorized by my organization to make this report, which was prepared by me or under my supervision and direction, with the data and facts stated herein to be true, correct, and complete to the best of my knowledge and belief.

Shelly Summers
SIGNATURE NAME (PRINT OR TYPE) 11/9/2017 405-426-4029
701 Cedar Lake Blvd Oklahoma City OK 73114
ADDRESS CITY STATE ZIP shelly.summers@chaparralenergy.com
EMAIL ADDRESS

INFORMED CONSENT RECORD

LEASE NAME Puckett WELL NO. 1-23

NAMES OF FORMATIONS	TOP
Bartlesville	1,200
Savannah	1,800
Booch	2085
Gilcrease	2,260
Union Valley/Cromwell	2,800

FOR COMMISSION USE ONLY	
ITD on file	<input type="checkbox"/> YES <input type="checkbox"/> NO
APPROVED	DISAPPROVED
2) Reject Codes _____ _____ _____ _____ _____	

Were open hole logs run? ☐ yes ☐ no

Date Last log was run _____

Was CO₂ encountered? ☐ yes ☐ no at what depths? _____

Was H₂S encountered? ☐ yes ☐ no at what depths? _____

Were unusual drilling circumstances encountered? ☐ yes ☐ no

If yes, briefly explain below _____

Other remarks:

UIC Permit # ~~1503310072~~ 640855

OCC- This well is an open hole completion in the Union Valley/Cromwell from bottom of the $4\frac{1}{2}$ " casing at 2532' to total depth at 2918'. Well is also perforated in Bilcrease 2263-2455'.

640 Acres

If more than three drainholes are proposed, attach a separate sheet indicating the necessary information.

Direction must be stated in degrees azimuth.
Please note, the horizontal drainhole and its end point must be located within the boundaries of the lease or spacing unit.

Directional surveys are required for all drainholes and directional wells.

640 Acres

A blank 10x10 grid for graphing, consisting of 10 columns and 10 rows of squares. The grid is used for plotting the graph of the function $y = \frac{1}{2}x^2$ for x values from -10 to 10.

BOTTOM HOLE LOCATION FOR DIRECTIONAL HOLE

SEC	TWP	RGE	COUNTY
Spot Location			
1/4	1/4	1/4	1/4
Measured Total Depth		True Vertical Depth	BHL From Lease, Unit, or Property Line:

BOTTOM HOLE LOCATION FOR HORIZONTAL HOLE: (LATERALS)

LATERAL #1

SEC	TWP	RGE	COUNTY			
Spot Location				Feet From 1/4 Sec Lines	FSL	FWL
1/4	1/4	1/4	1/4			
Depth of Deviation		Radius of Turn	Direction	Total Length		
Measured Total Depth		True Vertical Depth	BHL From Lease, Unit, or Property Line:			

LATERAL #2

SEC	TWP	RGE	COUNTY			
Spot Location				Feet From 1/4 Sec Lines	FSL	FWL
1/4	1/4	1/4	1/4			
Depth of Deviation		Radius of Turn	Direction	Total Length		
Measured Total Depth		True Vertical Depth	BHL From Lease, Unit, or Property Line:			

LATERAL #3

SEC	TWP	RGE	COUNTY			
Spot Location				Feet From 1/4 Sec Lines	FSL	FWL
1/4	1/4	1/4	1/4			
Depth of Deviation		Radius of Turn	Direction	Total Length		
Measured Total Depth		True Vertical Depth	BHL From Lease, Unit, or Property Line:			