

Oklahoma Corporation Commission  
Oil & Gas Conservation Division  
Post Office Box 52000  
Oklahoma City, Oklahoma 73152-2000  
Rule 165: 10-3-25

Form 1002A

API No.: 35151228090002

**Completion Report**

Spud Date: August 10, 2007

OTC Prod. Unit No.: N/A

Drilling Finished Date: August 28, 2007

**Amended**

1st Prod Date:

Amend Reason: TERMINATED DISPOSAL ORDER

Completion Date: December 27, 2007

Recomplete Date: February 01, 2018

**Drill Type: STRAIGHT HOLE**

Well Name: GIANT 1-7 SWD

Purchaser/Measurer:

Location: WOODS 7 27N 17W  
NW SW NW NW  
1840 FSL 200 FWL of 1/4 SEC  
Derrick Elevation: 1739 Ground Elevation: 1725

First Sales Date:

Operator: CHESAPEAKE OPERATING LLC 17441  
PO BOX 18496  
6100 N WESTERN AVE  
OKLAHOMA CITY, OK 73154-0496

| Completion Type |               | Location Exception |  | Increased Density |  |
|-----------------|---------------|--------------------|--|-------------------|--|
| X               | Single Zone   | Order No           |  | Order No          |  |
|                 | Multiple Zone | N/A                |  | N/A               |  |
|                 | Commingled    |                    |  |                   |  |

| Casing and Cement |       |        |       |      |     |     |            |
|-------------------|-------|--------|-------|------|-----|-----|------------|
| Type              | Size  | Weight | Grade | Feet | PSI | SAX | Top of CMT |
| SURFACE           | 9 5/8 | 36     | J-55  | 730  |     | 260 | SURFACE    |
| PRODUCTION        | 7     | 23     | J-55  | 6920 |     | 300 | 5180       |

| Liner                                  |      |        |       |        |     |     |           |              |
|--|------|--------|-------|--------|-----|-----|-----------|--------------|
| Type                                   | Size | Weight | Grade | Length | PSI | SAX | Top Depth | Bottom Depth |
| There are no Liner records to display. |      |        |       |        |     |     |           |              |

**Total Depth: 8365**

| Packer |              | Plug                                  |           |
|--------|--------------|---------------------------------------|-----------|
| Depth  | Brand & Type | Depth                                 | Plug Type |
| 6880   | BAKER FA 1   | There are no Plug records to display. |           |

| Initial Test Data                             |           |             |                   |             |                         |               |                   |                          |            |                      |
|---|-----------|-------------|-------------------|-------------|-------------------------|---------------|-------------------|--------------------------|------------|----------------------|
| Test Date                                     | Formation | Oil BBL/Day | Oil-Gravity (API) | Gas MCF/Day | Gas-Oil Ratio Cu FT/BBL | Water BBL/Day | Pumpin or Flowing | Initial Shut-In Pressure | Choke Size | Flow Tubing Pressure |
| There are no Initial Data records to display. |           |             |                   |             |                         |               |                   |                          |            |                      |

| Completion and Test Data by Producing Formation |                  |  |            |
|---|------------------|--|------------|
| Formation Name: ARBUCKLE                        |                  | Code: 169ABCK  | Class: DRY |
| <b>Spacing Orders</b>                           |                  | <b>Perforated Intervals</b>                          |            |
| <b>Order No</b>                                 | <b>Unit Size</b> | <b>From</b>  | <b>To</b>  |
| N/A   |                  | There are no Perf. Intervals records to display.     |            |
| <b>Acid Volumes</b>                             |                  | <b>Fracture Treatments</b>                           |            |
| There are no Acid Volume records to display.    |                  | There are no Fracture Treatments records to display. |            |

| Formation           | Top  |
|---------------------|------|
| TONKAWA SAND        | 4832 |
| OSWEGO              | 5330 |
| MISSISSIPPI         | 5523 |
| WOODFORD            | 6338 |
| VIOLA               | 6410 |
| SIMPSON DOLOMITE    | 6660 |
| SIMPSON WILCOX SAND | 6775 |
| ARBUCKLE            | 6914 |

Were open hole logs run? Yes  
Date last log run: August 21, 2007

Were unusual drilling circumstances encountered? No  
Explanation:

| Other Remarks   |
|---|
| OCC - THIS WELL IS AN OPEN HOLE COMPLETION FROM BOTTOM OF THE 7" CASING AT 6,920' TO TOTAL DEPTH AT 8,365'. |

| FOR COMMISSION USE ONLY |         |
|-------------------------|---------|
| Status: Accepted        | 1138949 |

API NO. 151-22809  
OTC PROD. N/A  
UNIT NO. N/A

PLEASE TYPE OR USE BLACK INK ONLY

NOTE:

Attach copy of original 1002A if recompletion or reentry.

OKLAHOMA CORPORATION COMMISSION

Oil & Gas Conservation Division

Post Office Box 52000

Oklahoma City, Oklahoma 73152-2000

Rule 165:10-3-25

Form 1002A

Rev. 2009

RECEIVED

MAR 01 2018

ORIGINAL  
☒ AMENDED

Reason Amended

Terminated disposal order

TYPE OF DRILLING OPERATION

☒ STRAIGHT HOLE ☐ DIRECTIONAL HOLE ☐ HORIZONTAL HOLE  
SERVICE WELL

If directional or horizontal, see reverse for bottom hole location.

COUNTY Woods SEC 7 TWP 27N RGE 17W

LEASE NAME Giant WELL NO 1-7 SWD

SHL NW 1/4 SW 1/4 NW 1/4 NW 1/4 FSL 1,840 FWL OF 1/4 SEC 200

ELEVATION Derrick Fl 1,739 Ground 1,725 Latitude (if Known)

OPERATOR NAME CHESAPEAKE OPERATING, L.L.C.

OTC/OCC OPERATOR NO. 17441

ADDRESS P.O. BOX 18496

CITY OKLAHOMA CITY

STATE OK

ZIP 73154

COMPLETION REPORT

SPUD DATE 8/10/2007

DRLG FINISHED DATE 8/28/2007

DATE OF WELL COMPLETION 12/27/2007

1ST PROD DATE

RECOMP DATE 2-1-2018

Longitude (if Known)

LOCATE WELL

COMPLETION TYPE

☒ SINGLE ZONE  
☐ MULTIPLE ZONE  
Application Date  
☐ COMMINGLED  
Application Date  
LOCATION EXCEPTION ORDER NO. N/A  
INCREASED DENSITY ORDER NO. N/A

CASING & CEMENT (Form 1002C must be attached)

| TYPE         | SIZE   | WEIGHT | GRADE | FEET  | PSI | SAX | TOP     |
|--------------|--------|--------|-------|-------|-----|-----|---------|
| CONDUCTOR    |        |        |       |       |     |     |         |
| SURFACE      | 9-5/8" | 36#    | J-55  | 730   |     | 260 | Surface |
| INTERMEDIATE |        |        |       |       |     |     |         |
| PRODUCTION   | 7"     | 23#    | J-55  | 6,920 |     | 300 | 5,180   |
| LINER        |        |        |       |       |     |     |         |

PACKER @ 6,880 BRAND & TYPE Baker FA 1

PLUG @ PLUG @

TYPE TYPE

PLUG @ PLUG @

TYPE TYPE

TOTAL DEPTH

8,365

COMPLETION & TEST DATA BY PRODUCING FORMATION

FORMATION Arbuckle  
SPACING & SPACING ORDER NUMBER N/A  
CLASS: Oil, Gas, Dry, Inj. Disp, Comm Disp, Svc Dry  
PERFORATED INTERVALS Open Hole  
ACID/VOLUME  
FRACTURE TREATMENT (Fluids/Prop Amounts)

Minimum Gas Allowable

(165:10-17-7)

Gas Purchaser/Measurer

OR

1st Sales Date

INITIAL TEST DATA

Oil Allowable

(165:10-13-3)

INITIAL TEST DATE  
OIL-BBL/DAY  
OIL-GRAVITY ( API)  
GAS-MCF/DAY  
GAS-OIL RATIO CU FT/BBL  
WATER-BBL/DAY  
PUMPING OR FLOWING  
INITIAL SHUT-IN PRESSURE  
CHOKE SIZE  
FLOW TUBING PRESSURE

AS SUBMITTED

A record of the formations drilled through, and pertinent remarks are presented on the reverse. I declare that I have knowledge of the contents of this report and am authorized by my organization to make this report, which was prepared by me or under my supervision and direction, with the data and facts stated herein to be true, correct, and complete to the best of my knowledge and belief.

Juanita Cooper

JUANITA COOPER - SR. REGULATORY ANALYST

2/28/2018

405-848-8000

SIGNATURE

NAME (PRINT OR TYPE)

DATE

PHONE NUMBER

P.O. BOX 18496

OKLAHOMA CITY

OK

73154

juanita.cooper@chk.com

ADDRESS

CITY

STATE

ZIP

EMAIL ADDRESS

PLEASE TYPE OR USE BLACK INK ONLY  
FORMATION RECORD

Give formation names and tops, if available, or descriptions and thickness of formations drilled through. Show intervals cored or drillstem tested.

LEASE NAME Giant

WELL NO. 1-7 SWD

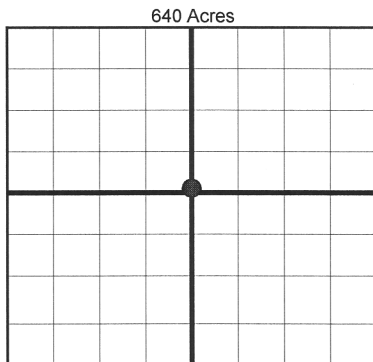
| NAMES OF FORMATIONS | TOP   |
|---------------------|-------|
| Tonkawa Sand        | 4,832 |
| Oswego              | 5,330 |
| Mississippi         | 5,523 |
| Woodford            | 6,338 |
| Viola               | 6,410 |
| Simpson Dolomite    | 6,660 |
| Simpson Wilcox Sand | 6,775 |
| Arbuckle            | 6,914 |

| FOR COMMISSION USE ONLY  |                   |
|--|-------------------|
| ITD on file <input type="checkbox"/> YES <input type="checkbox"/> NO |                   |
| APPROVED _____   | DISAPPROVED _____ |
| 2) Reject Codes  |                   |
| _____  |                   |
| _____  |                   |
| _____  |                   |
| _____  |                   |

|  |              |                             |
|--|--------------|-----------------------------|
| Were open hole logs run?                         | <u>X</u> yes | no                          |
| Date last log was run                            | 8/21/2007    |                             |
| Was CO <sub>2</sub> encountered?                 | yes          | <u>X</u> no at what depths? |
| Was H <sub>2</sub> S encountered?                | yes          | <u>X</u> no at what depths? |
| Were unusual drilling circumstances encountered? | yes          | <u>X</u> no                 |
| If yes, briefly explain.                         |              |                             |

Other remarks:

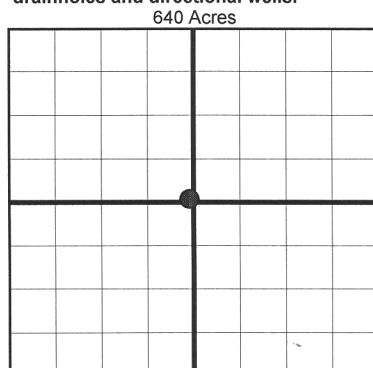
*OCC - This well is an open hole completion from bottom of the 7" casing at 6920' to total depth at 8365'.*



If more than three drainholes are proposed, attach a separate sheet indicating the necessary information.

Direction must be stated in degrees azimuth. Please note, the horizontal drainhole and its end point must be located within the boundaries of the lease or spacing unit.

**Directional surveys are required for all drainholes and directional wells.**



**BOTTOM HOLE LOCATION FOR DIRECTIONAL HOLE**

| SEC                                     | TWP | RGE                 | COUNTY                          |
|---|-----|---------------------|---------------------------------|
| Spot Location                           |     |                     |                                 |
| 1/4                                     | 1/4 | 1/4                 | 1/4                             |
| Measured Total Depth                    |     | True Vertical Depth | Feet From 1/4 Sec Lines FSL FWL |
| BHL From Lease, Unit, or Property Line: |     |                     |                                 |

**BOTTOM HOLE LOCATION FOR HORIZONTAL HOLE: (LATERALS)**

| SEC                                     | TWP | RGE                 | COUNTY    |
|---|-----|---------------------|-----------|
| Spot Location                           |     |                     |           |
| 1/4                                     | 1/4 | 1/4                 | 1/4       |
| Depth of Deviation                      |     | Radius of Turn      | Direction |
| Measured Total Depth                    |     | True Vertical Depth | FNL FEL   |
| BHL From Lease, Unit, or Property Line: |     |                     |           |

**LATERAL #2**

| SEC                                     | TWP | RGE                 | COUNTY    |
|---|-----|---------------------|-----------|
| Spot Location                           |     |                     |           |
| 1/4                                     | 1/4 | 1/4                 | 1/4       |
| Depth of Deviation                      |     | Radius of Turn      | Direction |
| Measured Total Depth                    |     | True Vertical Depth | FSL FWL   |
| BHL From Lease, Unit, or Property Line: |     |                     |           |

**LATERAL #3**

| SEC                                     | TWP | RGE                 | COUNTY    |
|---|-----|---------------------|-----------|
| Spot Location                           |     |                     |           |
| 1/4                                     | 1/4 | 1/4                 | 1/4       |
| Depth of Deviation                      |     | Radius of Turn      | Direction |
| Measured Total Depth                    |     | True Vertical Depth | FSL FWL   |
| BHL From Lease, Unit, or Property Line: |     |                     |           |