

Oklahoma Corporation Commission
Oil & Gas Conservation Division
Post Office Box 52000
Oklahoma City, Oklahoma 73152-2000
Rule 165: 10-3-25

Form 1002A

API No.: 35151226020001

Completion Report

Spud Date: April 24, 2005

OTC Prod. Unit No.: N/A

Drilling Finished Date: May 24, 2005

Amended

1st Prod Date:

Amend Reason: TERMINATED DISPOSAL / CORRECT PRODUCTION CASING DEPTH

Completion Date: September 07, 2005

Recomplete Date: August 14, 2013

Drill Type: STRAIGHT HOLE

Well Name: EUREKA 2-13D

Purchaser/Measurer:

Location: WOODS 13 27N 18W
NE SW NE NE
1890 FSL 1690 FWL of 1/4 SEC
Derrick Elevation: 1706 Ground Elevation: 1694

First Sales Date:

Operator: CHESAPEAKE OPERATING LLC 17441
PO BOX 18496
6100 N WESTERN AVE
OKLAHOMA CITY, OK 73154-0496

Completion Type		Location Exception		Increased Density	
X	Single Zone	Order No		Order No	
	Multiple Zone	N/A		N/A	
	Commingled				

Casing and Cement							
Type	Size	Weight	Grade	Feet	PSI	SAX	Top of CMT
SURFACE	9 5/8	36	J-55	1010		400	SURFACE
PRODUCTION	7	23	J-55	6919		210	5620

Liner								
Type	Size	Weight	Grade	Length	PSI	SAX	Top Depth	Bottom Depth
There are no Liner records to display.								

Total Depth: 8450

Packer		Plug	
Depth	Brand & Type	Depth	Plug Type
6886	ARROW AS1X	There are no Plug records to display.	

Initial Test Data										
Test Date	Formation	Oil BBL/Day	Oil-Gravity (API)	Gas MCF/Day	Gas-Oil Ratio Cu FT/BBL	Water BBL/Day	Pumpin or Flowing	Initial Shut-In Pressure	Choke Size	Flow Tubing Pressure
There are no Initial Data records to display.										

Completion and Test Data by Producing Formation			
Formation Name: ARBUCKLE		Code: 169ABCK	Class: DRY
Spacing Orders		Perforated Intervals	
Order No	Unit Size	From	To
N/A		There are no Perf. Intervals records to display.	
Acid Volumes		Fracture Treatments	
There are no Acid Volume records to display.		There are no Fracture Treatments records to display.	

Formation	Top
MISSISSIPPI	5516
VIOLA	6450
SIMPSON DOLOMITE	6755
WILCOX SAND	6816
ARBUCKLE	6916

Were open hole logs run? Yes
Date last log run: May 23, 2005

Were unusual drilling circumstances encountered? No
Explanation:

Other Remarks
TERMINATED DISPOSAL ORDER AND CORRECTED PRODUCTION CASING DEPTH AND FORM 1002C. OCC - THIS WELL IS AN OPEN HOLE COMPLETION FROM BOTTOM OF THE 7" CASING AT 6,919' TO TOTAL DEPTH AT 8,450'.

FOR COMMISSION USE ONLY	
Status: Accepted	1138950

API NO. 151-22602
OTC PROD.
UNIT NO. N/A

PLEASE TYPE OR USE BLACK INK ONLY
NOTE:
Attach copy of original 1002A if recompletion or reentry.

OKLAHOMA CORPORATION COMMISSION
Oil & Gas Conservation Division
Post Office Box 52000
Oklahoma City, Oklahoma 73152-2000
Rule 165:10-3-25

RECEIVED

Form 1002A
Rev. 2009

MAR 01 2018

OKLAHOMA CORPORATION COMMISSION

☐ ORIGINAL
☒ AMENDED
Reason Amended

Terminated Disposal
See remarks correct Production casing Depth

COMPLETION REPORT

TYPE OF DRILLING OPERATION
☒ STRAIGHT HOLE ☐ DIRECTIONAL HOLE ☐ HORIZONTAL HOLE
SERVICE WELL

If directional or horizontal, see reverse for bottom hole location.

COUNTY Woods SEC 13 TWP 27N RGE 18W

LEASE NAME Eureka WELL NO. 2-13D

SHL NE 1/4 SW 1/4 NE 1/4 NE 1/4 FSL 1,890 FWL OF 1/4 SEC 1,690

ELEVATION Derrick Fl 1,706 Ground 1,694 Latitude (if Known)

OPERATOR NAME CHESAPEAKE OPERATING, L.L.C.

SPUD DATE 4/24/2005

DRLG FINISHED DATE 5/24/2005

DATE OF WELL COMPLETION 9/7/2005

1ST PROD DATE N/A

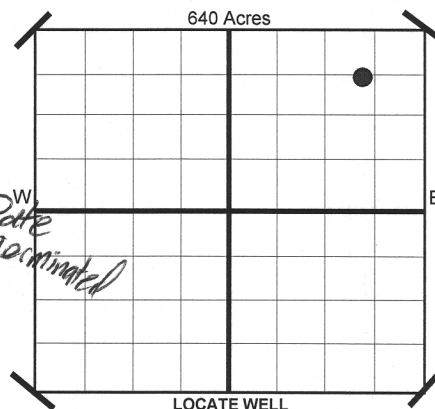
RECOMP DATE 8-14-2013

Longitude (if Known)

OTC/OCC OPERATOR NO. 17441

ADDRESS P.O. BOX 18496

CITY OKLAHOMA CITY STATE OK ZIP 73154



COMPLETION TYPE

☒ SINGLE ZONE
☐ MULTIPLE ZONE
Application Date
COMMINGLED
Application Date
LOCATION N/A
EXCEPTION ORDER NO. N/A
INCREASED DENSITY
ORDER NO. N/A

CASING & CEMENT (Form 1002C must be attached)

TYPE	SIZE	WEIGHT	GRADE	FEET	PSI	SAX	TOP
CONDUCTOR							
SURFACE	9-5/8"	36#	J-55	1,010		400	Surface
INTERMEDIATE							
PRODUCTION	7"	23#	J-55	6,919		210	5,620
LINER							

PACKER @ 6,886 BRAND & TYPE Arrow AS1X

PLUG @ TYPE PLUG @ TYPE PLUG @ TYPE

TOTAL DEPTH 8,450

COMPLETION & TEST DATA BY PRODUCING FORMATION

FORMATION	Arbuckle						
SPACING & SPACING ORDER NUMBER	N/A						
CLASS: Oil, Gas, Dry, Inj. Disp, Comm Disp, Svc	Dry						
PERFORATED INTERVALS	Open Hole						
ACID/VOLUME							
FRACTURE TREATMENT (Fluids/Prop Amounts)							

Minimum Gas Allowable (165:10-17-7)

Gas Purchaser/Measurer

OR

1st Sales Date

INITIAL TEST DATA

Oil Allowable (165:10-13-3)

INITIAL TEST DATE							
OIL-BBL/DAY							
OIL-GRAVITY (API)							
GAS-MCF/DAY							
GAS-OIL RATIO CU FT/BBL							
WATER-BBL/DAY							
PUMPING OR FLOWING							
INITIAL SHUT-IN PRESSURE							
CHOKE SIZE							
FLOW TUBING PRESSURE							

AS SUBMITTED

A record of the formations drilled through, and pertinent remarks are presented on the reverse. I declare that I have knowledge of the contents of this report and am authorized by my organization to make this report, which was prepared by me or under my supervision and direction, with the data and facts stated herein to be true, correct, and complete to the best of my knowledge and belief.

Juanita Cooper
SIGNATURE
P.O. BOX 18496
ADDRESS
OKLAHOMA CITY
CITY
OK
STATE
73154
ZIP
JUANITA COOPER - SR. REGULATORY ANALYST
NAME (PRINT OR TYPE)
2/28/2018
DATE
405-848-8000
PHONE NUMBER
juanita.cooper@chk.com
EMAIL ADDRESS

PLEASE TYPE OR USE BLACK INK ONLY
FORMATION RECORD

Give formation names and tops, if available, or descriptions and thickness of formations drilled through. Show intervals cored or drillstem tested.

LEASE NAME Eureka

WELL NO. 2-13D

NAMES OF FORMATIONS	TOP
Mississippi	5,516
Viola	6,450
Simpson Dolomite	6,755
Wilcox Sand	6,816
Arbuckle	6,916

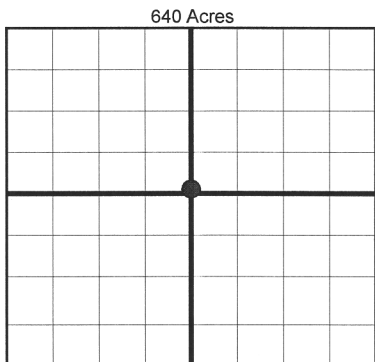
FOR COMMISSION USE ONLY	
ITD on file <input type="checkbox"/> YES <input type="checkbox"/> NO	
APPROVED _____	DISAPPROVED _____
2) Reject Codes	

Were open hole logs run?	<u>X</u> yes	no
Date Last log was run	5/23/2005	
Was CO ₂ encountered?	yes	<u>X</u> no at what depths?
Was H ₂ S encountered?	yes	<u>X</u> no at what depths?
Were unusual drilling circumstances encountered?	yes	<u>X</u> no
If yes, briefly explain.		

Other remarks:

Terminated disposal order and corrected production casing depth and Form 1002C

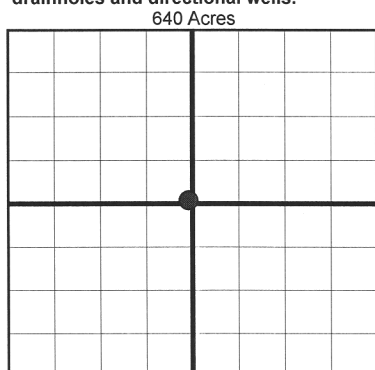
OCC - This well is an open hole completion from bottom of the 7" casing at 6919' to total depth at 8450'.



If more than three drainholes are proposed, attach a separate sheet indicating the necessary information.

Direction must be stated in degrees azimuth. Please note, the horizontal drainhole and its end point must be located within the boundaries of the lease or spacing unit.

Directional surveys are required for all drainholes and directional wells.



BOTTOM HOLE LOCATION FOR DIRECTIONAL HOLE

SEC	TWP	RGE	COUNTY
Spot Location			
1/4	1/4	1/4	1/4
Measured Total Depth		True Vertical Depth	BHL From Lease, Unit, or Property Line:

BOTTOM HOLE LOCATION FOR HORIZONTAL HOLE: (LATERALS)

LATERAL #1			
SEC	TWP	RGE	COUNTY
Spot Location			
1/4	1/4	1/4	1/4
Depth of Deviation		Radius of Turn	Direction
Measured Total Depth		True Vertical Depth	BHL From Lease, Unit, or Property Line:

LATERAL #2

SEC	TWP	RGE	COUNTY
Spot Location			
1/4	1/4	1/4	1/4
Depth of Deviation		Radius of Turn	Direction
Measured Total Depth		True Vertical Depth	BHL From Lease, Unit, or Property Line:

LATERAL #3

SEC	TWP	RGE	COUNTY
Spot Location			
1/4	1/4	1/4	1/4
Depth of Deviation		Radius of Turn	Direction
Measured Total Depth		True Vertical Depth	BHL From Lease, Unit, or Property Line: