

Oklahoma Corporation Commission  
Oil & Gas Conservation Division  
Post Office Box 52000  
Oklahoma City, Oklahoma 73152-2000  
Rule 165: 10-3-25

Form 1002A

API No.: 35137259450003

**Completion Report**

Spud Date: July 26, 2003

OTC Prod. Unit No.: 137-112195

Drilling Finished Date: October 25, 2003

**Amended**

1st Prod Date: November 16, 2003

Amend Reason: RECLASSIFYING AS GAS WELL

Completion Date: November 17, 2003

Recomplete Date: August 15, 2010

**Drill Type: DIRECTIONAL HOLE**

Well Name: ABNEY 1-15

Purchaser/Measurer:

Location: STEPHENS 15 2N 7W  
C N2 S2 NW  
1650 FNL 1320 FWL of 1/4 SEC  
Derrick Elevation: 1315 Ground Elevation: 1287

First Sales Date:

Operator: CHESAPEAKE OPERATING LLC 17441  
PO BOX 18496  
6100 N WESTERN AVE  
OKLAHOMA CITY, OK 73154-0496

Completion Type	
X	Single Zone
	Multiple Zone
	Commingled

Location Exception
Order No
N/A

Increased Density
Order No
N/A

Casing and Cement							
Type	Size	Weight	Grade	Feet	PSI	SAX	Top of CMT
SURFACE	13 3/8	48	H-40	855		820	SURFACE
INTERMEDIATE	9 5/8	40	N-80	5000		790	3000
PRODUCTION	7	29	P-110	13820		1170	9037

Liner								
Type	Size	Weight	Grade	Length	PSI	SAX	Top Depth	Bottom Depth
LINER	4 1/2	15.10	P-110	2555	0	300	13530	16085

**Total Depth: 16085**

Packer	
Depth	Brand & Type
There are no Packer records to display.	

Plug	
Depth	Plug Type
14239	COMP BP
14500	COMP BP

Initial Test Data
-------------------

Test Date	Formation	Oil BBL/Day	Oil-Gravity (API)	Gas MCF/Day	Gas-Oil Ratio Cu FT/BBL	Water BBL/Day	Pumpin or Flowing	Initial Shut-In Pressure	Choke Size	Flow Tubing Pressure
Nov 12, 2017	DORNICK HILLS			301			FLOWING		99/99	67

Completion and Test Data by Producing Formation									
Formation Name: DORNICK HILLS				Code: 403DKHL			Class: GAS		
Spacing Orders				Perforated Intervals					
Order No		Unit Size		From			To		
140380		640		13802			14212		
				14260			15824		
Acid Volumes				Fracture Treatments					
There are no Acid Volume records to display.				41,119 BARRELS FLUIDS, 535,018 POUNDS PROPPANT					

Formation	Top
CISCO	5032
HOXBAR	8082
DEESE	10451
DORNICK HILLS	11035

Were open hole logs run? Yes  
 Date last log run: October 16, 2003  
  
 Were unusual drilling circumstances encountered? No  
 Explanation:

Other Remarks
There are no Other Remarks.

Bottom Holes
Sec: 15 TWP: 2N RGE: 7W County: STEPHENS  NW   NW   NE   SW  2462 FSL   1330 FWL of 1/4 SEC  Depth of Deviation: 0 Radius of Turn: 0 Direction: 0 Total Length: 0  Measured Total Depth: 16085 True Vertical Depth: 15953 End Pt. Location From Release, Unit or Property Line: 1330

FOR COMMISSION USE ONLY
<div>Status: Accepted</div> <div>1138559</div>

API NO. 137-25945  
OTC PROD.  
UNIT NO. 137-112195

PLEASE TYPE OR USE BLACK INK ONLY  
NOTE:  
Attach copy of original 1002A if recompletion or reentry.

OKLAHOMA CORPORATION COMMISSION  
Oil & Gas Conservation Division  
Post Office Box 52000  
Oklahoma City, Oklahoma 73152-2000  
Rule 165:10-3-25

RECEIVED  
154012  
JAN 10 2018  
Form 1002A  
Rev. 2009  
OKLAHOMA CORPORATION COMMISSION

☒ ORIGINAL  
☐ AMENDED  
Reason Amended Reclassifying as gas well

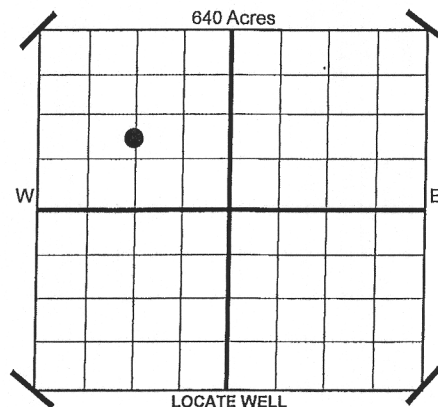
TYPE OF DRILLING OPERATION  
☐ STRAIGHT HOLE ☒ DIRECTIONAL HOLE ☐ HORIZONTAL HOLE  
If directional or horizontal, see reverse for bottom hole location.

COUNTY Stephens SEC 15 TWP 2N RGE 7W  
LEASE NAME Abney WELL NO 1-15  
SHL C 1/4 N2 1/4 S2 1/4 NW 1/4 FNL 1,650 FWL OF 1/4 SEC 1,320  
ELEVATION Derrick Fl 1,315 Ground 1,287 Latitude (if Known)  
OPERATOR NAME CHESAPEAKE OPERATING, INC. OTC/OCC OPERATOR NO. 17441

ADDRESS P.O. BOX 18496  
CITY OKLAHOMA CITY STATE OK ZIP 73154

COMPLETION REPORT

SPUD DATE 7/26/2003  
DRLG FINISHED DATE 10/25/2003  
DATE OF WELL COMPLETION 11/17/2003  
1ST PROD DATE 11/16/2003  
RECOMP DATE 8/15/2010  
Longitude (if Known)



COMPLETION TYPE

☒ SINGLE ZONE  
☐ MULTIPLE ZONE  
Application Date  
☐ COMMINGLED  
Application Date  
LOCATION EXCEPTION ORDER NO. N/A  
INCREASED DENSITY ORDER NO. N/A

CASING & CEMENT (Form 1002C must be attached)

TYPE	SIZE	WEIGHT	GRADE	FEET	PSI	SAX	TOP
CONDUCTOR							
SURFACE	13-3/8"	48#	H-40	855		820	Surface
INTERMEDIATE	9-5/8"	40#	N-80	5,000		790	3,000
PRODUCTION	7"	29#	P-110	13,820		1,170	9,037
LINER	4-1/2"	15.10#	P-110	13,530-16,082		300	13,530
						TOTAL DEPTH	16,085

PACKER @ BRAND & TYPE PLUG @ TYPE PLUG @ CompBP TYPE 14,239  
PACKER @ BRAND & TYPE PLUG @ TYPE PLUG @ CompBP TYPE 14,500

COMPLETION & TEST DATA BY PRODUCING FORMATION

FORMATION	Dornick Hills					Earlier Frac
SPACING & SPACING ORDER NUMBER	640 140380					
CLASS: Oil, Gas, Dry, Inj. Disp, Comm Disp, Svc	Gas					
PERFORATED INTERVALS	13,802 - 14,212 below bridge plug 14,260 - 15,824					
ACID/VOLUME						
FRACTURE TREATMENT (Fluids/Prop Amounts)	41,119 bbls fluids 535,018# proppant					

Minimum Gas Allowable (165:10-17-7)

Gas Purchaser/Measurer



OR

1st Sales Date

INITIAL TEST DATA

Oil Allowable (165:10-13-3)

INITIAL TEST DATE	11/12/2017				
OIL-BBL/DAY	0				
OIL-GRAVITY ( API)					
GAS-MCF/DAY	301				
GAS-OIL RATIO CU FT/BBL					
WATER-BBL/DAY	0				
PUMPING OR FLOWING	Flowing				
INITIAL SHUT-IN PRESSURE					
CHOKE SIZE	99/99				
FLOW TUBING PRESSURE	67				

AS SUBMITTED

A record of the formations drilled through, and pertinent remarks are presented on the reverse. I declare that I have knowledge of the contents of this report and am authorized by my organization to make this report, which was prepared by me or under my supervision and direction, with the data and facts stated herein to be true, correct, and complete to the best of my knowledge and belief.

Juanita Cooper SIGNATURE  
P.O. BOX 18496 ADDRESS  
OKLAHOMA CITY CITY  
OK STATE  
73154 ZIP  
juanita.cooper@chk.com EMAIL ADDRESS  
11/10/2018 DATE  
405-848-8000 PHONE NUMBER

PLEASE TYPE OR USE BLACK INK ONLY  
FORMATION RECORD

Give formation names and tops, if available, or descriptions and thickness of formations drilled through. Show intervals cored or drillstem tested.

LEASE NAME Abney

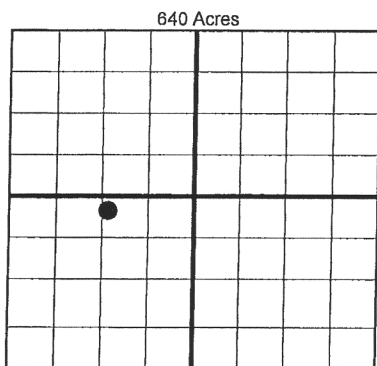
WELL NO. 1-15

NAMES OF FORMATIONS	TOP
Cisco	5,032
Hoxbar	8,082
Deese	10,451
Dornick Hills	11,035

FOR COMMISSION USE ONLY	
ITD on file <input type="checkbox"/> YES <input type="checkbox"/> NO	
APPROVED _____	DISAPPROVED _____
2) Reject Codes	
_____	
_____	
_____	
_____	

Were open hole logs run?	<u>X</u> yes	no
Date Last log was run	10/16/2003	
Was CO <sub>2</sub> encountered?	yes	<u>X</u> no at what depths?
Was H <sub>2</sub> S encountered?	yes	<u>X</u> no at what depths?
Were unusual drilling circumstances encountered?	yes	<u>X</u> no
If yes, briefly explain.		

Other remarks:

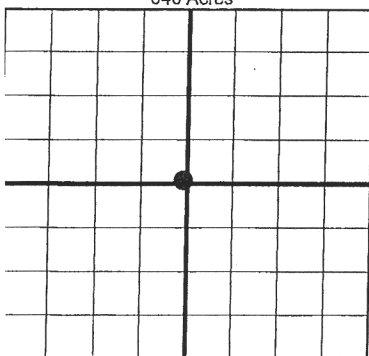


If more than three drainholes are proposed, attach a separate sheet indicating the necessary information.

Direction must be stated in degrees azimuth. Please note, the horizontal drainhole and its end point must be located within the boundaries of the lease or spacing unit.

Directional surveys are required for all drainholes and directional wells.

640 Acres



BOTTOM HOLE LOCATION FOR DIRECTIONAL HOLE

SEC	TWP	RGE	COUNTY
15	2N	7W	Stephens
Spot Location			
NW 1/4	NW 1/4	NE 1/4	SW 1/4
Measured Total Depth		True Vertical Depth	BHL From Lease, Unit, or Property Line:
16,085		15,953	1,330

BOTTOM HOLE LOCATION FOR HORIZONTAL HOLE: (LATERALS)

SEC	TWP	RGE	COUNTY
Spot Location			
1/4	1/4	1/4	1/4
Depth of Deviation		Radius of Turn	Direction
Measured Total Depth		True Vertical Depth	BHL From Lease, Unit, or Property Line:

LATERAL #2

SEC	TWP	RGE	COUNTY
Spot Location			
1/4	1/4	1/4	1/4
Depth of Deviation		Radius of Turn	Direction
Measured Total Depth		True Vertical Depth	BHL From Lease, Unit, or Property Line:

LATERAL #3

SEC	TWP	RGE	COUNTY
Spot Location			
1/4	1/4	1/4	1/4
Depth of Deviation		Radius of Turn	Direction
Measured Total Depth		True Vertical Depth	BHL From Lease, Unit, or Property Line:

API NO. 137-25945  
OTC PROD. UNIT NO. 137-112195  
PLEASE TYPE OR USE BLACK INK ONLY  
NOTE: Attach copy of original 1002A if recompletion or reentry.

OKLAHOMA CORPORATION COMMISSION  
Oil & Gas Conservation Division  
Post Office Box 52000  
Oklahoma City, Oklahoma 73152-2000  
Rule 165:10-3-25

RECEIVED  
154012  
JAN 3 2018  
Form 1002A  
Rev. 2009  
OKLAHOMA CORPORATION COMMISSION  
1016EZ

ORIGINAL  
X AMENDED  
Reason Amended Reclassifying as gas well

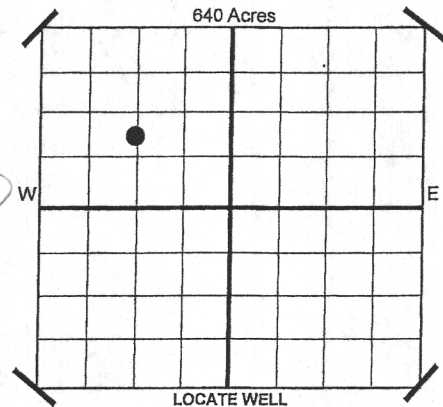
TYPE OF DRILLING OPERATION  
STRAIGHT HOLE ☒ DIRECTIONAL HOLE ☐ HORIZONTAL HOLE ☐  
SERVICE WELL

If directional or horizontal, see reverse for bottom hole location.

COUNTY Stephens SEC 15 TWP 2N RGE 7W  
LEASE NAME Abney WELL NO 1-15  
SHL C 1/4 N2 1/4 S2 1/4 NW 1/4 FNL 1,650 FWL OF 1/4 SEC 1,320  
ELEVATION 1,315 Ground 1,287  
Derrick Fl  
OPERATOR CHESAPEAKE OPERATING, INC. OTC/OCC OPERATOR NO. 17441  
ADDRESS P.O. BOX 18496  
CITY OKLAHOMA CITY STATE OK ZIP 73154

COMPLETION REPORT

SPUD DATE 7/26/2003  
DRLG FINISHED DATE 10/25/2003  
DATE OF WELL COMPLETION 11/17/2003  
1ST PROD DATE 11/16/2003  
RECOMP DATE 8/15/2010  
Longitude (if Known)



COMPLETION TYPE

X SINGLE ZONE  
MULTIPLE ZONE  
Application Date  
COMMINGLED  
Application Date  
LOCATION EXCEPTION ORDER NO. N/A  
INCREASED DENSITY ORDER NO. N/A

CASING & CEMENT (Form 1002C must be attached)

TYPE	SIZE	WEIGHT	GRADE	FEET	PSI	SAX	TOP
CONDUCTOR							
SURFACE	13-3/8"	48#	H-40	855		820	Surface
INTERMEDIATE	9-5/8"	40#	N-80	5,000		790	3,000
PRODUCTION	7"	29#	P-110	13,820		1,170	9,037
LINER	4-1/2"	15.10#	P-110	13,530-16,082		300	13,530
TOTAL DEPTH							16,085

PACKER @ BRAND & TYPE PLUG @ TYPE PLUG @ CompBP TYPE 14,239  
PACKER @ BRAND & TYPE PLUG @ TYPE PLUG @ CompBP TYPE 14,500

COMPLETION & TEST DATA BY PRODUCING FORMATION

FORMATION	Dornick Hills					Earlier Frac
SPACING & SPACING ORDER NUMBER	640 140380					
CLASS: Oil, Gas, Dry, Inj. Disp, Comm Disp, Svc	Gas					
PERFORATED INTERVALS	13,802 - 14,212 below bridge plug 14,260 - 15,824					
ACID/VOLUME						
FRACTURE TREATMENT (Fluids/Prop Amounts)	41,119 bbls fluids 535,018# proppant					

Minimum Gas Allowable (165:10-17-7)  
OR  
Oil Allowable 8/25/17 (165:10-13-3)

Gas Purchaser/Measurer  
1st Sales Date

INITIAL TEST DATA

INITIAL TEST DATE	11/12/2017				
OIL-BBL/DAY	0				
OIL-GRAVITY (API)					
GAS-MCF/DAY	301				
GAS-OIL RATIO CU FT/BBL					
WATER-BBL/DAY	0				
PUMPING OR FLOWING	Flowing				
INITIAL SHUT-IN PRESSURE	700				
CHOKE SIZE	99/99				
FLOW TUBING PRESSURE	67				

AS SUBMITTED

A record of the formations drilled through, and pertinent remarks are presented on the reverse. I declare that I have knowledge of the contents of this report and am authorized by my organization to make this report, which was prepared by me or under my supervision and direction, with the data and facts stated herein to be true, correct, and complete to the best of my knowledge and belief.

Juanita Cooper

JUANITA COOPER - SR. REGULATORY ANALYST  
NAME (PRINT OR TYPE)

1/10/2018  
DATE

405-848-8000  
PHONE NUMBER

P.O. BOX 18496  
ADDRESS

OKLAHOMA CITY  
CITY

OK 73154  
STATE ZIP

juanita.cooper@chk.com  
EMAIL ADDRESS