

Oklahoma Corporation Commission
Oil & Gas Conservation Division
Post Office Box 52000
Oklahoma City, Oklahoma 73152-2000
Rule 165: 10-3-25

Form 1002A

API No.: 35073259420000

Completion Report

Spud Date: March 03, 2018

OTC Prod. Unit No.: 073-223502

Drilling Finished Date: March 25, 2018

1st Prod Date: May 17, 2018

Completion Date: April 04, 2018

Drill Type: HORIZONTAL HOLE

Min Gas Allowable: Yes

Well Name: CROOKED CREEK CLEVELAND UNIT 1-5H

Purchaser/Measurer: MUSTANG GAS

Location: KINGFISHER 5 19N 5W
SW SE NE SW
1410 FSL 2225 FWL of 1/4 SEC
Derrick Elevation: 1041 Ground Elevation: 1025

First Sales Date: 05/17/2018

Operator: BLAKE PRODUCTION COMPANY INC 18119

1601 NW EXPRESSWAY STE 777
OKLAHOMA CITY, OK 73118-1446

Completion Type		Location Exception		Increased Density	
X	Single Zone	Order No		Order No	
	Multiple Zone	There are no Location Exception records to display.		There are no Increased Density records to display.	
	Commingled				

Casing and Cement							
Type	Size	Weight	Grade	Feet	PSI	SAX	Top of CMT
SURFACE	9 5/8	36	J-55	463		190	SURFACE
PRODUCTION	7	26	J-55	6114		230	3441

Liner								
Type	Size	Weight	Grade	Length	PSI	SAX	Top Depth	Bottom Depth
There are no Liner records to display.								

Total Depth: 10749

Packer	
Depth	Brand & Type
There are no Packer records to display.	

Plug	
Depth	Plug Type
There are no Plug records to display.	

Initial Test Data										
Test Date	Formation	Oil BBL/Day	Oil-Gravity (API)	Gas MCF/Day	Gas-Oil Ratio Cu FT/BBL	Water BBL/Day	Pumpin or Flowing	Initial Shut-In Pressure	Choke Size	Flow Tubing Pressure
May 24, 2018	CLEVELAND	95	39.3	162	1705	1430	PUMPING			

Completion and Test Data by Producing Formation

Formation Name: CLEVELAND

Code: 405CLVD

Class: OIL

Spacing Orders

Order No	Unit Size
410744	UNIT

Perforated Intervals

From	To
There are no Perf. Intervals records to display.	

Acid Volumes

NONE

Fracture Treatments

26,000 BARRELS LINEAR GEL, 11,800 BARRELS X-LINK, 797,550 POUNDS 20/40 SAND, 780,000 POUNDS 16/30 SAND

Formation	Top
CLEVELAND	5666

Were open hole logs run? No

Date last log run:

Were unusual drilling circumstances encountered? No

Explanation:

Other Remarks

OCC - THIS WELL IS AN OPEN HOLE COMPLETION FROM BOTTOM OF THE 7" CASING AT 6,114' TO TERMINUS AT 10,749. THIS WELL'S COMPLETION INTERVAL IS WITHIN THE LEGAL LIMITS ALLOWED BY THE UNITIZATION.

Lateral Holes

Sec: 8 TWP: 19N RGE: 5W County: KINGFISHER

SW NW SE

1497 FSL 105 FWL of 1/4 SEC

Depth of Deviation: 5114 Radius of Turn: 1088 Direction: 180 Total Length: 5635

Measured Total Depth: 10749 True Vertical Depth: 5670 End Pt. Location From Release, Unit or Property Line: 176

FOR COMMISSION USE ONLY

1140374

Status: Accepted

API NO. 073-25942
OTC PROD. UNIT NO. 073-223502

PLEASE TYPE OR USE BLACK INK ONLY

NOTE:

Attach copy of original 1002A
if recompletion or reentry.

OKLAHOMA CORPORATION COMMISSION

Oil & Gas Conservation Division
Post Office Box 52000

Oklahoma City, Oklahoma 73152-2000
Rule 165:10-3-25

RECEIVED

JUL 16 2018

OKLAHOMA CORPORATION
COMMISSION

Form 1002A
Rev. 2009

☒ ORIGINAL
☐ AMENDED (Reason)

COMPLETION REPORT

TYPE OF DRILLING OPERATION

☐ STRAIGHT HOLE ☐ DIRECTIONAL HOLE ☒ HORIZONTAL HOLE
SERVICE WELL

If directional or horizontal, see reverse for bottom hole location.

COUNTY	Kingfisher	SEC	05	TWP	19N	RGE	05W	SPUD DATE	3/3/2018
LEASE NAME	Crooked Creek Cleveland Unit	WELL NO.	1-5H	DRLG FINISHED DATE	3/25/2018	DATE OF WELL COMPLETION	4/4/2018	1st PROD DATE	5/17/2018
SE 1/4 NE 1/4 SW 1/4	1/4	FSL OF 1/4 SEC	1410'	FWL OF 1/4 SEC	2225'	RECOMP DATE			
ELEVATION Derrick FL	1041'	Ground	1025'	Latitude (if known)	36.148783 N	Longitude (if known)	97.756864 W		
OPERATOR NAME	Blake Production Company, Inc.	OTC/OCC OPERATOR NO.	18119						
ADDRESS	1601 NW Expressway, Ste 777								
CITY	Oklahoma City	STATE	OK	ZIP	73118-1446				

640 Acres

LOCATE WELL

COMPLETION TYPE

<input checked="" type="checkbox"/> SINGLE ZONE
<input type="checkbox"/> MULTIPLE ZONE
Application Date
COMINGLED
Application Date
LOCATION
EXCEPTION ORDER
INCREASED DENSITY
ORDER NO.

CASING & CEMENT (Form 1002C must be attached)

TYPE	SIZE	WEIGHT	GRADE	FEET	PSI	SAX	TOP OF CMT
CONDUCTOR							
SURFACE	9-5/8"	36	J-55	463		190	Surface
INTERMEDIATE	7"	26	J-55	6,114		230	3441' (Est.)
PRODUCTION							
LINER							

PACKER @ _____ BRAND & TYPE _____ PLUG @ _____ TYPE _____ PLUG @ _____ TYPE _____
PACKER @ _____ BRAND & TYPE _____ PLUG @ _____ TYPE _____ PLUG @ _____ TYPE _____

TOTAL DEPTH 10747'
10749'

COMPLETION & TEST DATA BY PRODUCING FORMATION

FORMATION	CLEVELAND	405CLVD					Monitor
SPACING & SPACING ORDER NUMBER	410744 (unit)						Report to FracFocus
CLASS: Oil, Gas, Dry, Inj, Disp, Comm Disp, Svc	OIL						
PERFORATED INTERVALS	Open Hole						
ACID/VOLUME	none						
FRACTURE TREATMENT (Fluids/Prop Amounts)	26,000 bbl linear gel	11,800 bbl x-link					
	797,550 # 20/40 sand						
	780,000 # 16/30 sand						

☒ Min Gas Allowable (165:10-17-7)
OR
☐ Oil Allowable (165:10-13-3)

Gas Purchaser/Measurer
First Sales Date

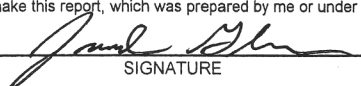
Mustang Gas
5/17/2018

INITIAL TEST DATA

INITIAL TEST DATE	5/24/2018						
OIL-BBL/DAY	95						
OIL-GRAVITY (API)	39.3						
GAS-MCF/DAY	162						
GAS-OIL RATIO CU FT/BBL	1705						
WATER-BBL/DAY	1430						
PUMPING OR FLOWING	Pumping						
INITIAL SHUT-IN PRESSURE							
CHOKE SIZE							
FLOW TUBING PRESSURE							

AS SUBMITTED

A record of the formations drilled through, and pertinent remarks are presented on the reverse. I declare that I have knowledge of the contents of this report and am authorized by my organization to make this report, which was prepared by me or under my supervision and direction, with the data and facts stated herein to be true, correct, and complete to the best of my knowledge and belief.

	Jared Glenn	7/9/2018	405-286-9800
SIGNATURE	NAME (PRINT OR TYPE)	DATE	PHONE NUMBER
1601 NW Expressway, Ste 777	Oklahoma City OK 73118	jared.glenn@blakeproduction.com	
ADDRESS	CITY STATE ZIP	EMAIL ADDRESS	

Give formation names and tops, if available, or descriptions and thickness of formations drilled through. Show intervals cored or drillstem tested.

FOR COMMISSION USE ONLY	
ITD on file <input type="checkbox"/> YES <input type="checkbox"/> NO	
APPROVED <input type="checkbox"/> DISAPPROVED <input type="checkbox"/>	2) Reject Codes

Were open hole logs run? ___ yes X no

Date Last log was run

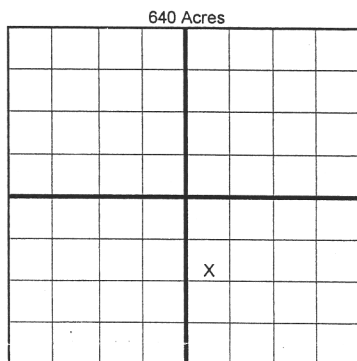
Was CO₂ encountered? ___ yes X no at what depths? _____

Was H₂S encountered? ___ yes X no at what depths? _____

Were unusual drilling circumstances encountered? ___ yes X no

If yes, briefly explain below

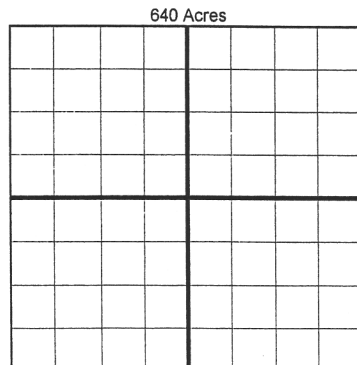
Other remarks: OCC - THIS WELL IS AN OPEN HOLE COMPLETION FROM BOTTOM OF THE 7" CASING AT 6,114' TO TERMINUS AT 10,749'



If more than three drainholes are proposed, attach a separate sheet indicating the necessary information.

Direction must be stated in degrees azimuth.
Please note, the horizontal drainhole and its end
point must be located within the boundaries of the
lease or spacing unit.

Directional surveys are required for all drainholes and directional wells.



SEC	TWP	RGE	COUNTY
Spot Location			
1/4	1/4	1/4	1/4
Measured Total Depth		True Vertical Depth	BHL From Lease, Unit, or Property Line:

LATERAL #1											
SEC	8	TWP	19N	RGE	5W	COUNTY Kingfisher					
Spot Location						Feet From 1/4 Sec Lines		FSL	1497'	FWL	105'
SW		1/4		NW		1/4		SE		1/4	
Depth of Deviation				5114'		Radius of Turn		1088'		Direction	
								180		Total Length	
										5,635'	
Measured Total Depth				10,749'		True Vertical Depth		5,670'		BHL From Lease, Unit, or Property Line:	
										176'	

SEC	TWP	RGE	COUNTY			
Spot Location				Feet From 1/4 Sec Lines	FSL	FWL
1/4	1/4	1/4	1/4			
Depth of Deviation		Radius of Turn	Direction	Total Length		
Measured Total Depth		True Vertical Depth	BHL From Lease, Unit, or Property Line:			

SEC	TWP	RGE	COUNTY			
Spot Location				Feet From 1/4 Sec Lines	FSL	FWL
1/4	1/4	1/4	1/4			
Depth of Deviation	Radius of Turn		Direction	Total Length		
Measured Total Depth		True Vertical Depth	BHL From Lease, Unit, or Property Line:			