

Oklahoma Corporation Commission
Oil & Gas Conservation Division
Post Office Box 52000
Oklahoma City, Oklahoma 73152-2000
Rule 165: 10-3-25

Form 1002A

API No.: 35019760100001

Completion Report

Spud Date: February 14, 2018

OTC Prod. Unit No.:

Drilling Finished Date: February 15, 2018

1st Prod Date: August 02, 2018

Amended

Completion Date: July 31, 2018

Amend Reason: RE-ENTER

Drill Type: STRAIGHT HOLE

Well Name: COLINE "B" 36

Purchaser/Measurer:

Location: CARTER 21 3S 2W
NE NW SE SE
1088 FSL 747 FEL of 1/4 SEC
Derrick Elevation: 0 Ground Elevation: 1014

First Sales Date:

Operator: CHATHAM VICKIE R 17284

4938 OIL CITY RD
WILSON, OK 73463-6510

Completion Type		Location Exception		Increased Density	
X	Single Zone	Order No		Order No	
	Multiple Zone	There are no Location Exception records to display.		There are no Increased Density records to display.	
	Commingled				

Casing and Cement							
Type	Size	Weight	Grade	Feet	PSI	SAX	Top of CMT
PRODUCTION	5.5	15.5	J-55	769		400	SURFACE

Liner								
Type	Size	Weight	Grade	Length	PSI	SAX	Top Depth	Bottom Depth
There are no Liner records to display.								

Total Depth: 769

Packer		Plug	
Depth	Brand & Type	Depth	Plug Type
There are no Packer records to display.		There are no Plug records to display.	

Initial Test Data										
Test Date	Formation	Oil BBL/Day	Oil-Gravity (API)	Gas MCF/Day	Gas-Oil Ratio Cu FT/BBL	Water BBL/Day	Pumpin or Flowing	Initial Shut-In Pressure	Choke Size	Flow Tubing Pressure
Aug 02, 2018	PONTOTOC					30	PUMPING			

Completion and Test Data by Producing Formation										
---	--	--	--	--	--	--	--	--	--	--

Formation Name: PONTOTOC		Code: 419PNTC	Class: OIL
Spacing Orders		Perforated Intervals	
Order No	Unit Size	From	To
NONE		682	697
Acid Volumes		Fracture Treatments	
500 GALLONS		NONE	

Formation	Top
PONTOTOC	50

Were open hole logs run? Yes

Date last log run:

Were unusual drilling circumstances encountered? No

Explanation:

Other Remarks
There are no Other Remarks.

FOR COMMISSION USE ONLY	
Status: Accepted	1140604

API NO. 019-76010
OTC PROD.
UNIT NO.

(PLEASE TYPE OR USE BLACK INK ONLY)

OKLAHOMA CORPORATION COMMISSION
Oil & Gas Conservation Division
Post Office Box 52000
Oklahoma City, Oklahoma 73152-2000
Rule 165:10-3-25

RECEIVED

AUG 16 2018

Form 1002A

Rev. 2009

OKLAHOMA CORPORATION COMMISSION

ORIGINAL
☒ AMENDED (Reason) REENTER

TYPE OF DRILLING OPERATION
☒ STRAIGHT HOLE ☐ DIRECTIONAL HOLE ☐ HORIZONTAL HOLE
☐ SERVICE WELL
If directional or horizontal, see reverse for bottom hole location.

COUNTY CARTER SEC 21 TWP 3S RGE 2W
LEASE NAME COLINE B
WELL NO. 36
FEL 1/4 SEC 747
ELEVATION Ground 1014 FSL OF 1/4 SEC 1088
Latitude (if known)
OPERATOR NAME VICKIE R. CHATHAM OTC/OCC OPERATOR NO. 17284-0
ADDRESS 4938 OIL CITY RD.
CITY WILSON STATE OKLA. ZIP 73463

COMPLETION REPORT
SPUD DATE 2/14/2018
DRLG FINISHED DATE 2/15/2018
DATE OF WELL COMPLETION 7/31/2018
1st PROD DATE 8/2/2018
RECOMP DATE
Longitude (if known)

640 Acres
LOCATE WELL
W E
X

COMPLETION TYPE

☒ SINGLE ZONE
☐ MULTIPLE ZONE
Application Date
☐ COMMINGLED
Application Date
LOCATION EXCEPTION
ORDER NO.
INCREASED DENSITY
ORDER NO.

CASING & CEMENT (Form 1002C must be attached)

TYPE	SIZE	WEIGHT	GRADE	FEET	PSI	SAX	TOP OF CMT
CONDUCTOR							
SURFACE							
INTERMEDIATE							
PRODUCTION	5.5	15.5	J-55	769		400	SURFACE
LINER							
TOTAL DEPTH							769

PACKER @ BRAND & TYPE PLUG @ TYPE PLUG @ TYPE
PACKER @ BRAND & TYPE PLUG @ TYPE PLUG @ TYPE

COMPLETION & TEST DATA BY PRODUCING FORMATION

FORMATION PONTOTOC
SPACING & SPACING ORDER NUMBER none
CLASS: Oil, Gas, Dry, Inj, Disp, Comm Disp, Svc OIL
PERFORATED INTERVALS 682-697
ACID/VOLUME 500 GAL
FRACTURE TREATMENT (Fluids/Prop Amounts) none

Min Gas Allowable (165:10-17-7)

Gas Purchaser/Measurer

☐

OR

First Sales Date

Oil Allowable (165:10-13-3)

INITIAL TEST DATA

INITIAL TEST DATE 8/2/2018
OIL-BBL/DAY 0
OIL-GRAVITY (API)
GAS-MCF/DAY
GAS-OIL RATIO CU FT/BBL
WATER-BBL/DAY 30
PUMPING OR FLOWING PUMPING
INITIAL SHUT-IN PRESSURE 0
CHOKE SIZE
FLOW TUBING PRESSURE

AS SUBMITTED

A record of the formations drilled through, and pertinent remarks are presented on the reverse. I declare that I have knowledge of the contents of this report and am authorized by my organization to make this report, which was prepared by me or under my supervision and direction, with the data and facts stated herein to be true, correct, and complete to the best of my knowledge and belief.

Randy Milson
SIGNATURE
4938 OIL CITY RD.
ADDRESS
WILSON
CITY
OK
STATE
73463
ZIP
8/14/2018
DATE
PHONE NUMBER
rmilson@chathamdozerservice.com
EMAIL ADDRESS

Give formation names and tops, if available, or descriptions and thickness of formations drilled through. Show intervals cored or drillstem tested.

NAMES OF FORMATIONS	TOP
PONTOTOC	50

		FOR COMMISSION USE ONLY	
ITD on file	<input type="checkbox"/> YES	<input type="checkbox"/> NO	
APPROVED	DISAPPROVED		2) Reject Codes
_____		_____	

Were open hole logs run? X yes no

Date Last log was run _____

Was CO₂ encountered? yes X no at what depths? _____

Was H₂S encountered? yes X no at what depths? _____

Were unusual drilling circumstances encountered? yes X no

If yes, briefly explain below _____

Other remarks:

640 Acres

A blank 10x10 grid for graphing. The grid is composed of 10 columns and 10 rows of squares. A thick horizontal line and a thick vertical line intersect at the center, dividing the grid into four 5x5 quadrants. The top edge of the grid is labeled with the numbers 1 through 10, corresponding to each column.

If more than three drainholes are proposed, attach a separate sheet indicating the necessary information.

Direction must be stated in degrees azimuth. Please note, the horizontal drainhole and its end point must be located within the boundaries of the lease or spacing unit.

Directional surveys are required for all drainholes and directional wells.

640 Acres

[illegible]

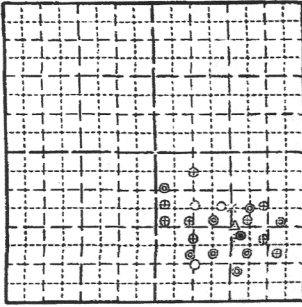
SEC	TWP	RGE	COUNTY		
Spot Location			Feet From 1/4 Sec Lines	FSL	FWL
1/4	1/4	1/4			
Measured Total Depth		True Vertical Depth	BHL From Lease, Unit, or Property Line:		

LATERAL #1						
SEC	TWP	RGE	COUNTY			
Spot Location				Feet From 1/4 Sec Lines	FSL	FWL
1/4	1/4	1/4	1/4			
Depth of Deviation		Radius of Turn	Direction		Total Length	
Measured Total Depth		True Vertical Depth	BHL From Lease, Unit, or Property Line:			

SEC	TWP	RGE	COUNTY			
Spot Location				Feet From 1/4 Sec Lines	FSL	FWL
1/4	1/4	1/4	1/4			
Depth of Deviation		Radius of Turn	Direction	Total Length		
Measured Total Depth		True Vertical Depth	BHL From Lease, Unit, or Property Line:			

SEC	TWP	RGE	COUNTY			
Spot Location				Feet From 1/4 Sec Lines	FSL	FWL
1/4	1/4	1/4	1/4			
Depth of Deviation		Radius of Turn	Direction	Total Length		
Measured Total Depth		True Vertical Depth	BHL From Lease, Unit, or Property Line:			

Misc. Wells in SE/4 of Section 21, Township 3 South, Range 2 West,
Carter County, Oklahoma.

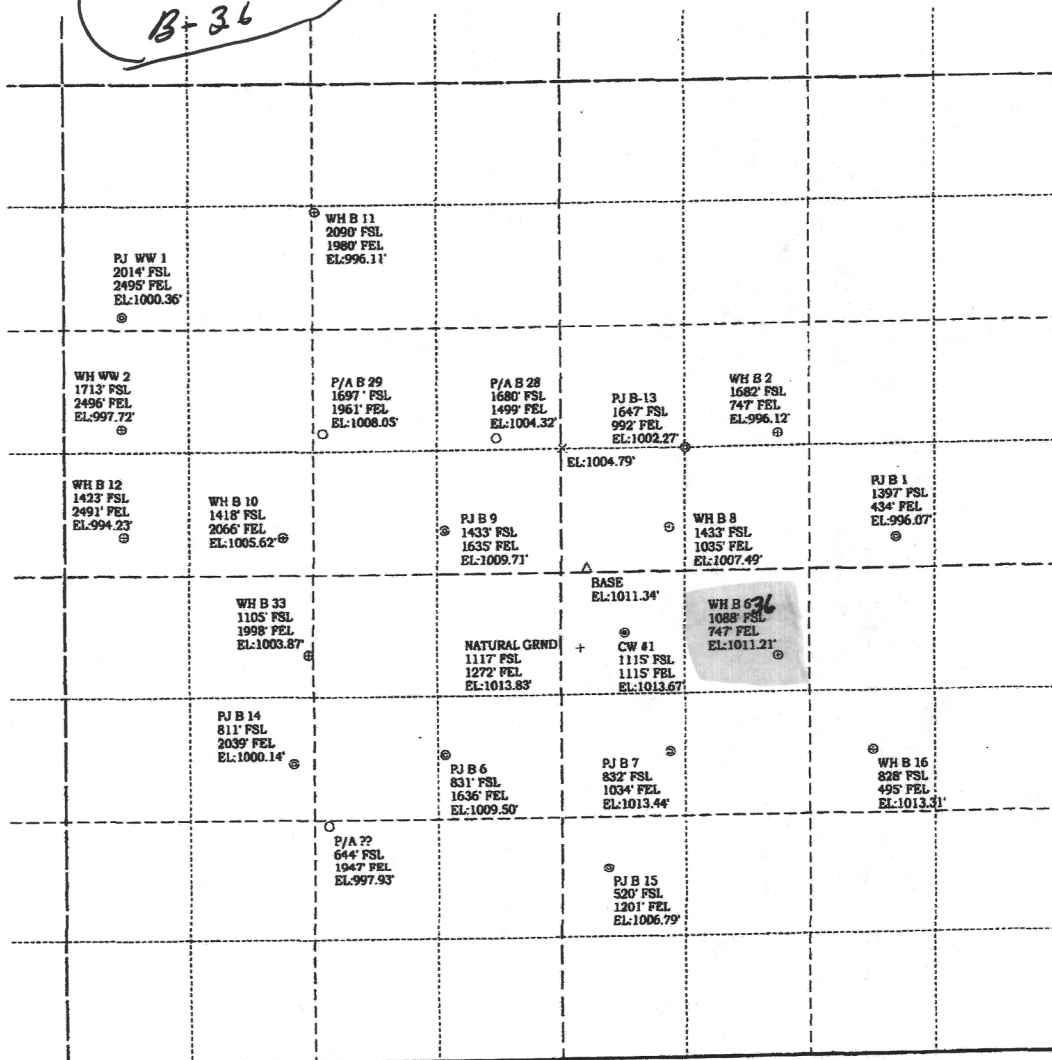


\$12 per ft.

SCALE 1" = 300'

- ⊙ Proposed Well
- ⊙ Pump Jack
- ⊙ Well Head
- Plugged / Abandon Well

Coline
B-36



(C) Copyright 2017 M & M Land Surveying, Inc.

NO.	REVISION	DATE	BY

SURV. BY: D. Harry McClintock

DRAWN BY: Harry McClintock

APP. BY: D. Harry McClintock

**JIMMY
CHATHAM**

SURVEYING AND MAPPING BY
M & M LAND SURVEYING, Inc.
ARDMORE, OKLAHOMA

SCALE: 1in. = 300ft

DATE: 12/7/17

FILE: 17521

DRAWING NUMBER:
17521.pcs

SHEET 1 of 1