

Oklahoma Corporation Commission
Oil & Gas Conservation Division
Post Office Box 52000
Oklahoma City, Oklahoma 73152-2000
Rule 165: 10-3-25

Form 1002A

API No.: 35087221180000

Completion Report

Spud Date: March 28, 2018

OTC Prod. Unit No.: 087-223790

Drilling Finished Date: May 03, 2018

1st Prod Date: July 01, 2018

Completion Date: July 01, 2018

Drill Type: HORIZONTAL HOLE

Min Gas Allowable: Yes

Well Name: LEFLORE 1015 1H

Purchaser/Measurer: ENABLE GATHERING &
PROCESSING

Location: MCCLAIN 10 8N 4W
NW NW NE NE
280 FNL 1100 FEL of 1/4 SEC
Derrick Elevation: 0 Ground Elevation: 1293

First Sales Date: 07/01/2018

Operator: EOG RESOURCES INC 16231

3817 NW EXPRESSWAY STE 500
OKLAHOMA CITY, OK 73112-1483

Completion Type		Location Exception		Increased Density	
X	Single Zone	Order No		Order No	
	Multiple Zone	682018		676905	
	Commingled				

Casing and Cement							
Type	Size	Weight	Grade	Feet	PSI	SAX	Top of CMT
SURFACE	9 5/8	36	J-55	1460		490	SURFACE
PRODUCTION	5 1/2 X 7	20 / 32	P-110	19767		2455	8736

Liner								
Type	Size	Weight	Grade	Length	PSI	SAX	Top Depth	Bottom Depth
There are no Liner records to display.								

Total Depth: 19775

Packer		Plug	
Depth	Brand & Type	Depth	Plug Type
There are no Packer records to display.		There are no Plug records to display.	

Initial Test Data										
Test Date	Formation	Oil BBL/Day	Oil-Gravity (API)	Gas MCF/Day	Gas-Oil Ratio Cu FT/BBL	Water BBL/Day	Pumpin or Flowing	Initial Shut-In Pressure	Choke Size	Flow Tubing Pressure
Jul 03, 2018	WOODFORD	508	40	182	358	3691	FLOWING	1300	128	2520

Completion and Test Data by Producing Formation

Formation Name: WOODFORD

Code: 319WDFD

Class: OIL

Spacing Orders

Order No	Unit Size
616337	640
627628	640
681282	MULTIUNIT

Perforated Intervals

From	To
9580	19640

Acid Volumes

10,268 GALLONS 7.5% HCL TOTAL ACID

Fracture Treatments

20,697,844 GALLONS TOTAL FLUID, 30,036,774 POUNDS TOTAL PROPPANT
--

Formation	Top
WOODFORD	9410

Were open hole logs run? No

Date last log run:

Were unusual drilling circumstances encountered? No

Explanation:

Other Remarks

OCC - THIS DOCUMENT IS ACCEPTED BASED ON THE DATA SUBMITTED NEITHER THE FINAL LOCATION EXCEPTION NOR THE FINAL MULTIUNIT ORDERS HAVE BEEN ISSUED.

Lateral Holes

Sec: 15 TWP: 8N RGE: 4W County: MCCLAIN

SW SE SE SE

178 FSL 348 FEL of 1/4 SEC

Depth of Deviation: 8780 Radius of Turn: 1159 Direction: 174 Total Length: 9836

Measured Total Depth: 19775 True Vertical Depth: 9491 End Pt. Location From Release, Unit or Property Line: 178

FOR COMMISSION USE ONLY

1140713

Status: Accepted

RECEIVED

Form 1002A
Rev. 2009

AUG 24 2018

OKLAHOMA CORPORATION COMMISSION

API NO. 087-22118
OTC PROD. UNIT NO. 087-223790

PLEASE TYPE OR USE BLACK INK ONLY
NOTE:

Attach copy of original 1002A
if recompletion or reentry.

OKLAHOMA CORPORATION COMMISSION
Oil & Gas Conservation Division
Post Office Box 52000
Oklahoma City, Oklahoma 73152-2000
Rule 165:10-3-25

☒ ORIGINAL
☐ AMENDED (Reason)

COMPLETION REPORT

TYPE OF DRILLING OPERATION

☐ STRAIGHT HOLE ☐ DIRECTIONAL HOLE ☒ HORIZONTAL HOLE
☐ SERVICE WELL

If directional or horizontal, see reverse for bottom hole location.

COUNTY	MCCLAIN	SEC	10	TWP	8N	RGE	4W	SPUD DATE	3/28/18
LEASE NAME	LEFLORE 1015			WELL NO.	1015 1H			DRLG FINISHED DATE	5/3/18
NW 1/4 NW 1/4 NE 1/4 NE 1/4	FNL OF 1/4 SEC 280			FEL OF 1/4 SEC 1100			DATE OF WELL COMPLETION	7/1/2018	
1st PROD DATE	7/1/2018								
ELEVATIO N Derrick FL	Ground	1293	Latitude (if known)			Longitude (if known)			
OPERATOR NAME	EOG Resources, Inc.			OTC/OCC OPERATOR NO.			16231		
ADDRESS	3817 NW Expressway, Suite 500								
CITY	Oklahoma City	STATE	OK	ZIP	73112				

640 Acres

LOCATE WELL

COMPLETION TYPE

<input checked="" type="checkbox"/> SINGLE ZONE
<input type="checkbox"/> MULTIPLE ZONE
Application Date
<input type="checkbox"/> COMMINGLED
Application Date
LOCATION EXCEPTION ORDER
INCREASED DENSITY ORDER NO.

CASING & CEMENT (Form 1002C must be attached)

TYPE	SIZE	WEIGHT	GRADE	FEET	PSI	SAX	TOP OF CMT
CONDUCTOR							
SURFACE	9 5/8	36	J-55	1,460		490	SURFACE
INTERMEDIATE							
PRODUCTION/TAPERED *	5 1/2 x 7	20/32	P-110	19767		2,455	8,736
LINER							
						TOTAL DEPTH	19,775

PACKER @ BRAND & TYPE PLUG @ TYPE PLUG @ TYPE
PACKER @ BRAND & TYPE PLUG @ TYPE PLUG @ TYPE

COMPLETION & TEST DATA BY PRODUCING FORMATION

FORMATION	WOODFORD						
SPACING & SPACING ORDER NUMBER	640/207075, 616337, 627628	(640)	(mu)	681282 I.O.			Reported to FracFocus
CLASS: Oil, Gas, Dry, Inj, Disp, Comm Disp, Svc	OIL						
PERFORATED INTERVALS	9580 - 19640						
ACID/VOLUME	Total Acid - 10,268 gals 7.5% HCL						
FRACTURE TREATMENT (Fluids/Prop Amounts)	Total Fluid - 20,697,844 gals						
	Total Prop - 30,036,774 lbs						

Min Gas Allowable (165:10-17-7)

Gas Purchaser/Measurer

Enable Gathering & Processing

☒

OR

First Sales Date

7/1/2018

INITIAL TEST DATA

INITIAL TEST DATE	7/3/2018
OIL-BBL/DAY	508
OIL-GRAVITY (API)	40
GAS-MCF/DAY	182
GAS-OIL RATIO CU FT/BBL	358
WATER-BBL/DAY	3691
PUMPING OR FLOWING	FLOWING
INITIAL SHUT-IN PRESSURE	1300
CHOKE SIZE	128
FLOW TUBING PRESSURE	2520

AS SUBMITTED

A record of the formations drilled through, and pertinent remarks are presented on the reverse. I declare that I have knowledge of the contents of this report and am authorized by my organization to make this report, which was prepared by me or under my supervision and direction, with the data and facts stated herein to be true, correct, and complete to the best of my knowledge and belief.

SIGNATURE

Joni Reeder

NAME (PRINT OR TYPE)

DATE

PHONE NUMBER

3817 NW Expressway, Suite 500

Oklahoma City

OK

73112

joni_reeder@eogresources.com

ADDRESS

CITY

STATE

ZIP

EMAIL ADDRESS

PLEASE TYPE OR USE BLACK INK ONLY

FORMATION RECORD

Give formation names and tops, if available, or descriptions and thickness of formations drilled through. Show intervals cored or drillstem tested.

LEASE NAME _____

WELL NO. _____

NAMES OF FORMATIONS	TOP
WOODFORD MD	9,410

FOR COMMISSION USE ONLY

ITD on file ☐ YES ☐ NO

APPROVED _____ DISAPPROVED _____

2) Reject Codes

Were open hole logs run? _____ yes ☒ no

Date Last log was run _____ N/A

Was CO₂ encountered? _____ yes ☒ no at what depths? _____

Was H₂S encountered? _____ yes ☒ no at what depths? _____

Were unusual drilling circumstances encountered? _____ yes ☒ no

If yes, briefly explain below: _____

Other remarks:

640 Acres

If more than three drainholes are proposed, attach a separate sheet indicating the necessary information.

Direction must be stated in degrees azimuth.
Please note, the horizontal drainhole and its end point must be located within the boundaries of the lease or spacing unit.

Directional surveys are required for all drainholes and directional wells.

640 Acres

BOTTOM HOLE LOCATION FOR DIRECTIONAL HOLE

SEC	TWP	RGE	COUNTY
Spot Location	1/4	1/4	1/4
Measured Total Depth	True Vertical Depth	BHL From Lease, Unit, or Property Line:	

BOTTOM HOLE LOCATION FOR HORIZONTAL HOLE: (LATERALS)

LATERAL #1

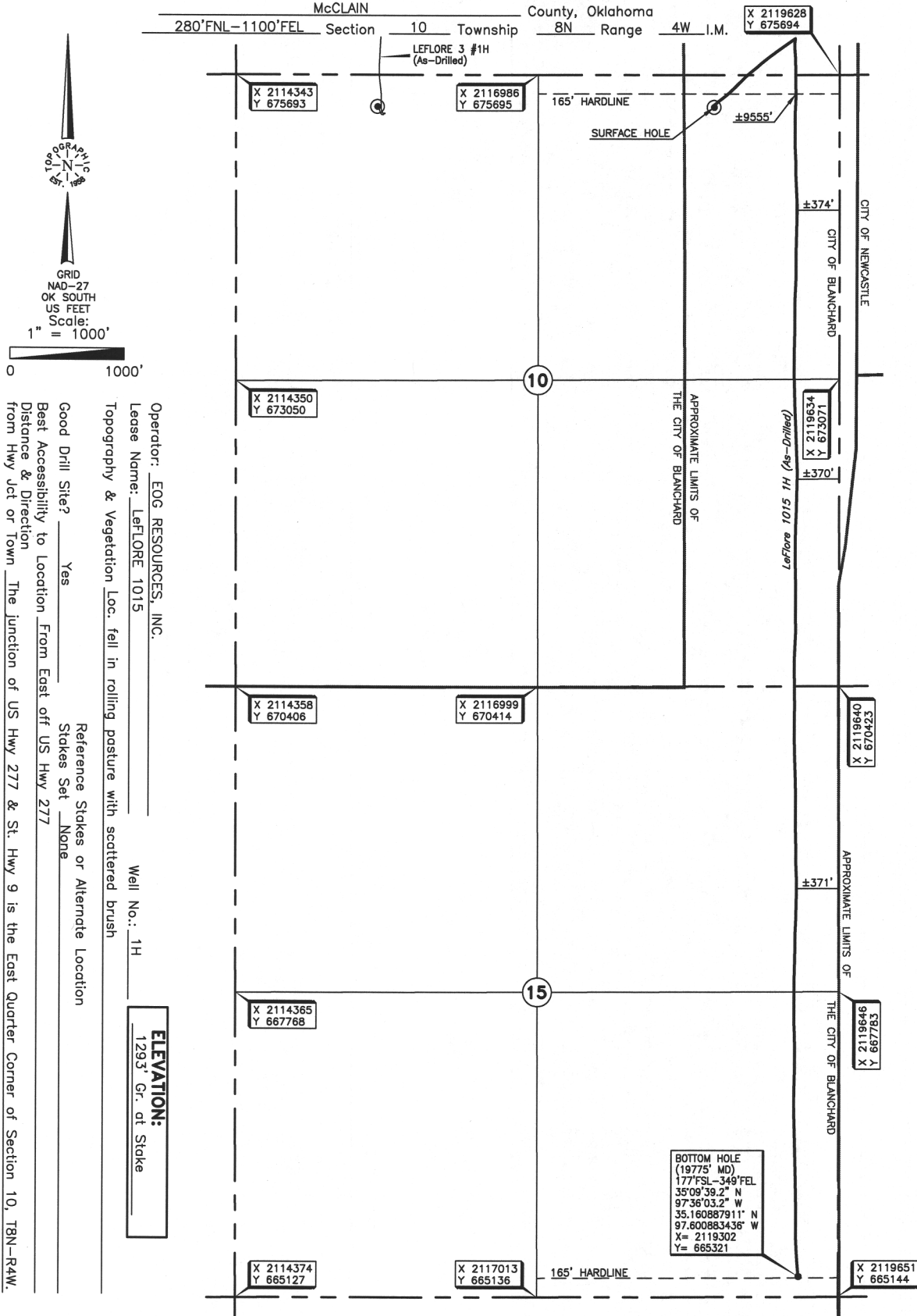
SEC	TWP	RGE	COUNTY
15	8N	4W	MCCLAIN
Spot Location	SW 1/4	SE 1/4	SE 1/4
Depth of Deviation	8,780	Radius of Turn	1159
Measured Total Depth	19,775	True Vertical Depth	9,491
Feet From 1/4 Sec Lines	FSL	178	FEL
Total Length	9,836		
BHL From Lease, Unit, or Property Line: 178			

LATERAL #2

SEC	TWP	RGE	COUNTY
Spot Location	1/4	1/4	1/4
Depth of Deviation	Radius of Turn	Direction	Total Length
Measured Total Depth	True Vertical Depth	BHL From Lease, Unit, or Property Line:	

LATERAL #3

SEC	TWP	RGE	COUNTY
Spot Location	1/4	1/4	1/4
Depth of Deviation	Radius of Turn	Direction	Total Length
Measured Total Depth	True Vertical Depth	BHL From Lease, Unit, or Property Line:	



DATUM: NAD-27
 LAT: 35°11'19.1" N
 LONG: 97°36'12.0" W
 LAT: 35.188627564° N
 LONG: 97.603337465° W
 STATE PLANE
 COORDINATES (US FEET):
 ZONE: OK SOUTH
 X: 2118529
 Y: 675414

293510 Date of Drawing: May 02, 2018
 Invoice # 289802 Date Staked: Feb. 28, 2018 JP

FINAL AS-DRILLED PLAT

AS-DRILLED INFORMATION
 FURNISHED BY EOG RESOURCES, INC.