

Oklahoma Corporation Commission  
Oil & Gas Conservation Division  
Post Office Box 52000  
Oklahoma City, Oklahoma 73152-2000  
Rule 165: 10-3-25

Form 1002A

API No.: 35069201810000

**Completion Report**

Spud Date: October 29, 2017

OTC Prod. Unit No.: 069-223729

Drilling Finished Date: November 24, 2017

1st Prod Date: July 09, 2018

Completion Date: July 09, 2018

**Drill Type: HORIZONTAL HOLE**

Well Name: WB 1-16H9X4

Purchaser/Measurer:

Location: JOHNSTON 16 4S 4E  
NW NW NE SW  
2335 FSL 1540 FWL of 1/4 SEC  
Derrick Elevation: 0 Ground Elevation: 735

First Sales Date:

Operator: XTO ENERGY INC 21003

810 HOUSTON ST  
FORT WORTH, TX 76102-6203

Completion Type	
X	Single Zone
	Multiple Zone
	Commingled

Location Exception
Order No
671454

Increased Density
Order No
669670
669671
669672

Casing and Cement							
Type	Size	Weight	Grade	Feet	PSI	SAX	Top of CMT
CONDUCTOR	20	84.75	J-55	107			SURFACE
SURFACE	13 3/8	54.5	J-55	576		430	SURFACE
INTERMEDIATE	9 5/8	36	J-55	2474		595	SURFACE
PRODUCTION	5 1/2	23	P-110	20990		2855	5434

Liner								
Type	Size	Weight	Grade	Length	PSI	SAX	Top Depth	Bottom Depth
There are no Liner records to display.								

**Total Depth: 20990**

Packer	
Depth	Brand & Type
There are no Packer records to display.	

Plug	
Depth	Plug Type
There are no Plug records to display.	

Initial Test Data
-------------------

Test Date	Formation	Oil BBL/Day	Oil-Gravity (API)	Gas MCF/Day	Gas-Oil Ratio Cu FT/BBL	Water BBL/Day	Pumpin or Flowing	Initial Shut-In Pressure	Choke Size	Flow Tubing Pressure
Jul 31, 2018	WOODFORD	913	44	2276	2493	1740	FLOWING	1800	32/64	1280

#### Completion and Test Data by Producing Formation

Formation Name: WOODFORD

Code: 319WDFD

Class: OIL

#### Spacing Orders

Order No	Unit Size
542820	640
545679	640
560950	640
671418	MULTIUNIT

#### Perforated Intervals

From	To
10121	20869

#### Acid Volumes

36,000 GALLONS
----------------

#### Fracture Treatments

36 STAGES - 536,169 BARRELS TREATED WATER, 1,772,460 POUNDS 100 MESH SAND, 14,016,200 POUNDS 40/70 SAND.
--

Formation	Top
WOODFORD	10821

Were open hole logs run? No

Date last log run:

Were unusual drilling circumstances encountered? No

Explanation:

#### Other Remarks

IRREGULAR SECTION OCC - THIS DOCUMENT IS ACCEPTED BASED ON THE DATA SUBMITTED NEITHER THE FINAL LOCATION EXCEPTION NOR THE FINAL MULTIUNIT ORDERS ARE ISSUED. OPERATOR HAS AGREED THE EXHIBIT IN THE FINAL HEARINGS WILL BE FIXED TO SHOW THE CORRECT DEEPEST PERFORATION IN THE TOE.

#### Lateral Holes

Sec: 4 TWP: 4S RGE: 4E County: JOHNSTON

SE SW NW SW

1641 FSL 422 FWL of 1/4 SEC

Depth of Deviation: 10289 Radius of Turn: 557 Direction: 353 Total Length: 9825

Measured Total Depth: 20990 True Vertical Depth: 10641 End Pt. Location From Release, Unit or Property Line: 1641

#### FOR COMMISSION USE ONLY

1140508

Status: Accepted

API NO. 069-20181  
OTC PROD. UNIT NO. 069-223729

PLEASE TYPE OR USE BLACK INK ONLY  
NOTE:

Attach copy of original 1002A  
if recompletion or reentry.

OKLAHOMA CORPORATION COMMISSION  
Oil & Gas Conservation Division  
Post Office Box 52000  
Oklahoma City, Oklahoma 73152-2000  
Rule 165:10-3-25

RECEIVED  
Aug 6 2018  
OKLAHOMA CORPORATION  
COMMISSION

Form 1002A  
Rev. 2009

☒ ORIGINAL  
☐ AMENDED (Reason)

TYPE OF DRILLING OPERATION

☐ STRAIGHT HOLE ☐ DIRECTIONAL HOLE ☒ HORIZONTAL HOLE  
☐ SERVICE WELL

If directional or horizontal, see reverse for bottom hole location.

COUNTY	Johnston	SEC	16	TWP	4S	RGE	4E	SPUD DATE	10/29/2017	
LEASE NAME	WB(1-16H9X4)			WELL NO.				DRLG FINISHED DATE	11/24/2017	
NW 1/4 NW 1/4 NE 1/4 SW 1/4	FSL OF 1/4 SEC 2335			FWL OF 1/4 SEC 1540			DATE OF WELL COMPLETION	7/9/2018	1st PROD DATE	7/9/2018
ELEVATION	Ground	735'	Latitude (if known)			34.208031N			Longitude (if known)	-96.89284W
OPERATOR NAME	XTO Energy Inc.							OTC/OCC OPERATOR NO.	21003	
ADDRESS	210 Park Avenue, Suite 2350									
CITY	Oklahoma City	STATE	Oklahoma	ZIP	73102					

640 Acres

W									E

LOCATE WELL

COMPLETION TYPE

<input checked="" type="checkbox"/> SINGLE ZONE	
<input type="checkbox"/> MULTIPLE ZONE	
Application Date	
COMINGLED	
Application Date	I.O.
LOCATION	671454, 671418
EXCEPTION ORDER	669670, 669671, 72
INCREASED DENSITY ORDER NO.	669672

CASING & CEMENT (Form 1002C must be attached)

TYPE	SIZE	WEIGHT	GRADE	FEET	PSI	SAX	TOP OF CMT
CONDUCTOR	20"	84.75	J-55	107			Surface
SURFACE	13 3/8"	54.5	J-55	576		430	Surface
INTERMEDIATE	9 5/8"	36	J-55	2,474		595	surface
PRODUCTION	5 1/2"	23	P-110	20,990		2855	5434
LINER							

PACKER @ \_\_\_\_\_ BRAND & TYPE \_\_\_\_\_ PLUG @ \_\_\_\_\_ TYPE \_\_\_\_\_ PLUG @ \_\_\_\_\_ TYPE \_\_\_\_\_  
PACKER @ \_\_\_\_\_ BRAND & TYPE \_\_\_\_\_ PLUG @ \_\_\_\_\_ TYPE \_\_\_\_\_ PLUG @ \_\_\_\_\_ TYPE \_\_\_\_\_

TOTAL DEPTH 20,990'

COMPLETION & TEST DATA BY PRODUCING FORMATION

FORMATION	Woodford						
SPACING & SPACING ORDER NUMBER	(640) 545679, 542820 (640) 560950 (640) 671418 (multicount)						Reported to For Focus
CLASS: Oil, Gas, Dry, Inj, Disp, Comm Disp, Svc	Oil						
PERFORATED INTERVALS	36 Stages						
	10,988-20869						
ACID/VOLUME	36,000 gals						
FRACTURE TREATMENT (Fluids/Prop Amounts)	536,169 BTW						
	1,772,460# 100 Mesh						
	14,016,200# 40/70						

Min Gas Allowable (165:10-17-7)

Gas Purchaser/Measurer

INITIAL TEST DATA

OR  
Oil Allowable (165:10-13-3)

First Sales Date

INITIAL TEST DATE	7/31/2018
OIL-BBL/DAY	913
OIL-GRAVITY ( API)	44
GAS-MCF/DAY	2276
GAS-OIL RATIO CU FT/BBL	2493
WATER-BBL/DAY	1740
PUMPING OR FLOWING	Flowing
INITIAL SHUT-IN PRESSURE	1800
CHOKE SIZE	32/64"
FLOW TUBING PRESSURE	1280 FCP

AS SUBMITTED

A record of the formations drilled through, and pertinent remarks are presented on the reverse. I declare that I have knowledge of the contents of this report and am authorized by my organization to make this report, which was prepared by me or under my supervision and direction, with the data and facts stated herein to be true, correct, and complete to the best of my knowledge and belief.

SIGNATURE	Debbie Waggoner	DATE	8/3/2018	PHONE NUMBER	405-319-3243
ADDRESS	210 Park Avenue, Suite 2350	CITY	Oklahoma City	STATE	Ok
		ZIP	73102	EMAIL ADDRESS	debbie_waggoner@xtoenergy.com

**PLEASE TYPE OR USE BLACK INK ONLY**  
**FORMATION RECORD**

Give formation names and tops, if available, or descriptions and thickness of formations drilled through. Show intervals cored or drillstem tested.

NAMES OF FORMATIONS	TOP
WOODFORD	10,821

LEASE NAME WB WELL NO. 1-16H9X4

FOR COMMISSION USE ONLY	
ITD on file <input type="checkbox"/> YES <input type="checkbox"/> NO	
APPROVED _____	DISAPPROVED _____
2) Reject Codes	

Were open hole logs run?    yes X no

Date Last log was run \_\_\_\_\_

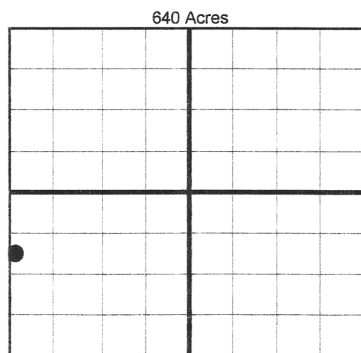
Was CO<sub>2</sub> encountered?    yes X no at what depths? \_\_\_\_\_

Was H<sub>2</sub>S encountered?    yes X no at what depths? \_\_\_\_\_

Were unusual drilling circumstances encountered?    yes X no

If yes, briefly explain below \_\_\_\_\_

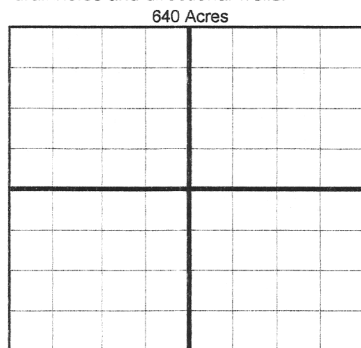
Other remarks: Irregular Section



If more than three drainholes are proposed, attach a separate sheet indicating the necessary information.

Direction must be stated in degrees azimuth. Please note, the horizontal drainhole and its end point must be located within the boundaries of the lease or spacing unit.

Directional surveys are required for all drainholes and directional wells.



**BOTTOM HOLE LOCATION FOR DIRECTIONAL HOLE**

SEC	TWP	RGE	COUNTY
Spot Location	1/4	1/4	1/4
Measured Total Depth	True Vertical Depth		BHL From Lease, Unit, or Property Line:

**BOTTOM HOLE LOCATION FOR HORIZONTAL HOLE: (LATERALS)**

LATERAL #1			
SEC	TWP	RGE	COUNTY
4	4S	4E	Johnston
Spot Location	SE 1/4 SW 1/4 NW 1/4 SW 1/4	Feet From 1/4 Sec Lines	FSL 1641 FWL 422
Depth of Deviation	10289	Radius of Turn	557.7
Measured Total Depth	20990'	True Vertical Depth	9131'
Direction 353.5° Total Length 9,825			
BHL From Lease, Unit, or Property Line: 1641 FSL & 422 FWL			

LATERAL #2			
SEC	TWP	RGE	COUNTY
Spot Location	1/4	1/4	1/4
Depth of Deviation	Radius of Turn		Direction
Measured Total Depth	True Vertical Depth		BHL From Lease, Unit, or Property Line:

LATERAL #3			
SEC	TWP	RGE	COUNTY
Spot Location	1/4	1/4	1/4
Depth of Deviation	Radius of Turn		Direction
Measured Total Depth	True Vertical Depth		BHL From Lease, Unit, or Property Line: