

Oklahoma Corporation Commission
Oil & Gas Conservation Division
Post Office Box 52000
Oklahoma City, Oklahoma 73152-2000
Rule 165: 10-3-25

Form 1002A

API No.: 35109203520002

Completion Report

Spud Date: October 05, 1997

OTC Prod. Unit No.: 109-102324

Drilling Finished Date: October 09, 1997

1st Prod Date: November 10, 1997

Amended

Completion Date: October 31, 1997

Amend Reason: SET CIBP @ 6,130' AND ADD LOWER PENN PERFORATIONS

Recomplete Date: June 22, 2017

Drill Type: STRAIGHT HOLE

Well Name: TINSLEY (TINSLEY 1) 1-17

Purchaser/Measurer: DCP MIDSTREAM

Location: OKLAHOMA 17 13N 3W
SE NW NW SE
2195 FSL 441 FWL of 1/4 SEC
Latitude: 35.600601 Longitude: -97.539064
Derrick Elevation: 1179 Ground Elevation: 1170

First Sales Date:

Operator: CHARTER OAK PRODUCTION CO LLC 21672

13929 QUAIL POINTE DR
OKLAHOMA CITY, OK 73134-1037

Completion Type		Location Exception		Increased Density	
X	Single Zone	Order No		Order No	
	Multiple Zone	There are no Location Exception records to display.		There are no Increased Density records to display.	
	Commingled				

Casing and Cement							
Type	Size	Weight	Grade	Feet	PSI	SAX	Top of CMT
SURFACE	10 3/4	40	K-55	1230	1000	900	SURFACE
PRODUCTION	4 1/2	11.6	K-55	6596	4400	885	5080

Liner								
Type	Size	Weight	Grade	Length	PSI	SAX	Top Depth	Bottom Depth
There are no Liner records to display.								

Total Depth: 7539

Packer		Plug	
Depth	Brand & Type	Depth	Plug Type
5750	ARROW SET II	6130	CIBP

Initial Test Data

Test Date	Formation	Oil BBL/Day	Oil-Gravity (API)	Gas MCF/Day	Gas-Oil Ratio Cu FT/BBL	Water BBL/Day	Pumpin or Flowing	Initial Shut-In Pressure	Choke Size	Flow Tubing Pressure
Jan 01, 1998	PENN LOW	1		200	200000		FLOWING	2100	20/64	200
Mar 06, 2017	PENN LOW						SWAB	620		
Jun 22, 2017	PENN LOW			353		2	FLOWING	1200	10/64	1420

Completion and Test Data by Producing Formation

Formation Name: PENN LOW

Code: 401PSLVL

Class: GAS

Spacing Orders

Order No	Unit Size
155079	80

Perforated Intervals

From	To
6230	6359

Acid Volumes

500 GALLONS 7.5% ACID

Fracture Treatments

180,000 GALLONS DIESEL

Formation Name: PENN LOW

Code: 401PSLVL

Class: GAS

Spacing Orders

Order No	Unit Size
155079	80

Perforated Intervals

From	To
6149	6174

Acid Volumes

2,500 GALLONS 15% NEFE, 28 BARRELS 2% KCL

Fracture Treatments

There are no Fracture Treatments records to display.

Formation Name: PENN LOW

Code: 401PSLVL

Class: GAS

Spacing Orders

Order No	Unit Size
155079	80

Perforated Intervals

From	To
5804	5824

Acid Volumes

3,000 GALLONS 7.5% ACID, 24 BARRELS 2% KCL

Fracture Treatments

There are no Fracture Treatments records to display.

Formation	Top
LOWER PENN	5095

Were open hole logs run? Yes

Date last log run: October 17, 1997

Were unusual drilling circumstances encountered? No

Explanation:

Other Remarks

LOWER PENN 6,230' TO 6,238' WAS PERFORATED AND TREATED BUT WAS UNREPORTED ON THE 1002A BY PREVIOUS OPERATOR.

Status: Accepted

RECEIVED

Form 1002A
Rev. 2009

MAY 03 2018

OKLAHOMA CORPORATION COMMISSION

API NO. 35-109-20352
OTC PROD. UNIT NO. 109-102324

PLEASE TYPE OR USE BLACK INK ONLY
NOTE:

Attach copy of original 1002A
if recompletion or reentry.

OKLAHOMA CORPORATION COMMISSION
Oil & Gas Conservation Division
Post Office Box 52000
Oklahoma City, Oklahoma 73152-2000
Rule 165:10-3-25

☐ ORIGINAL
☒ AMENDED (Reason) Set CIBP @ 6130' & add Lower Penn perforations

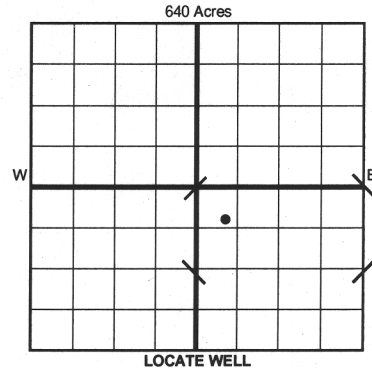
COMPLETION REPORT

TYPE OF DRILLING OPERATION

☒ STRAIGHT HOLE ☐ DIRECTIONAL HOLE ☐ HORIZONTAL HOLE
☐ SERVICE WELL

If directional or horizontal, see reverse for bottom hole location.

COUNTY Oklahoma	SEC 17	TWP 13N	RGE 03W	SPUD DATE 10/05/97
LEASE NAME Tinsley	WELL NO. 1-17	DATE OF WELL COMPLETION 10/31/97	1st PROD DATE 11/10/97	
SE 1/4 NW 1/4 NW 1/4 SE 1/4	FSL OF 1/4 SEC 2195'	FWL OF 1/4 SEC 441'	RECOMP DATE 6/22/17	
ELEVATION 1179' Ground 1170'	Latitude (if known) 35.600601	Longitude (if known) -97.539064		
OPERATOR NAME Charter Oak Production Co., LLC	OTC/OCC OPERATOR NO. 21672			
ADDRESS 13929 Quail Pointe Dr.				
CITY Oklahoma City	STATE OK	ZIP 73134		



COMPLETION TYPE

☒ SINGLE ZONE
☐ MULTIPLE ZONE
Application Date
☐ COMMINGLED
Application Date
LOCATION
EXCEPTION ORDER
INCREASED DENSITY
ORDER NO.

CASING & CEMENT (Form 1002C must be attached)

TYPE	SIZE	WEIGHT	GRADE	FEET	PSI	SAX	TOP OF CMT
CONDUCTOR							
SURFACE	10 3/4"	40#	K-55	1230'	1000	900	Surface
INTERMEDIATE							
PRODUCTION	4 1/2"	11.6#	K-55	6596'	4400	885	5080'
LINER							

PACKER @ 5750' BRAND & TYPE Arrow Set II PLUG @ 6130' TYPE CIBP PLUG @ TYPE
PACKER @ BRAND & TYPE PLUG @ TYPE PLUG @ TYPE

TOTAL DEPTH 6598' 7534'

Per original 1002A

COMPLETION & TEST DATA BY PRODUCING FORMATION - 401PSEVL

FORMATION	Lower Penn	Lower Penn	Lower Penn		
SPACING & SPACING ORDER NUMBER	80 Ac. - 155079	80 Ac. - 155079	80 Ac. - 155079		
CLASS: Oil, Gas, Dry, Inj, Disp, Comm Disp, Svc	Gas	Gas	Gas		
PERFORATED INTERVALS	6230' - 6238'	6149' - 6157'	5804' - 5824'		
	6353' - 6359'	6162' - 6166'			
		6170' - 6174'			
ACID/VOLUME	500 gal 7.5% acid	2500 gal 15% NeFe	3000 gal 7.5% acid		
	Yes	28 BBL 2% KCl	24 BBL 2% KCl		
FRACTURE TREATMENT (Fluids/Prop Amounts)	180,000 Gal Diesel				

No New Prod

☐ Min Gas Allowable (165:10-17-7)
OR
☐ Oil Allowable (165:10-13-3)

Gas Purchaser/Measurer
First Sales Date

DCP Midstream

INITIAL TEST DATA

INITIAL TEST DATE	1/1/98	3/6/17	6/22/17		
OIL-BBL/DAY	1	N/A	0		
OIL-GRAVITY (API)		N/A			
GAS-MCF/DAY	200	N/A	353		
GAS-OIL RATIO CU FT/BBL	200,000:1	N/A	N/A		
WATER-BBL/DAY	0	N/A	2		
PUMPING OR FLOWING	Flowing	Swab	Flowing		
INITIAL SHUT-IN PRESSURE	2100 psi	620 psi	1200 psi		
CHOKE SIZE	20/64	N/A	10/64		
FLOW TUBING PRESSURE	200 psi	N/A	1420 psi		

AS SUBMITTED

A record of the formations drilled through, and pertinent remarks are presented on the reverse. I declare that I have knowledge of the contents of this report and am authorized by my organization to make this report, which was prepared by me or under my supervision and direction, with the data and facts stated herein to be true, correct, and complete to the best of my knowledge and belief.

SIGNATURE *JC Brevetti* NAME (PRINT OR TYPE) JC Brevetti, Engineering Tech. DATE 5/2/18 PHONE NUMBER (405) 286-0361
13929 Quail Pointe Dr. Oklahoma City OK 73134 brevetti@charteroakproduction.com
ADDRESS CITY STATE ZIP EMAIL ADDRESS

PLEASE TYPE OR USE BLACK INK ONLY
FORMATION RECORD

Give formation names and tops, if available, or descriptions and thickness of formations drilled through. Show intervals cored or drillstem tested.

LEASE NAME Tinsley

WELL NO. 1-17

NAMES OF FORMATIONS	TOP
Lower Penn	5095'

FOR COMMISSION USE ONLY	
ITD on file <input type="checkbox"/> YES <input type="checkbox"/> NO	
APPROVED _____	DISAPPROVED _____
2) Reject Codes	

Were open hole logs run?	<input checked="" type="checkbox"/> yes <input type="checkbox"/> no
Date Last log was run	<u>October 17, 1997</u>
Was CO ₂ encountered?	<input type="checkbox"/> yes <input checked="" type="checkbox"/> no at what depths? _____
Was H ₂ S encountered?	<input type="checkbox"/> yes <input checked="" type="checkbox"/> no at what depths? _____
Were unusual drilling circumstances encountered?	<input type="checkbox"/> yes <input checked="" type="checkbox"/> no
If yes, briefly explain below	

Other remarks: Lower Penn 6230' to 6238' was perforated & treated but was unreported on the 1002A by previous operator.

640 Acres

If more than three drainholes are proposed, attach a separate sheet indicating the necessary information.

Direction must be stated in degrees azimuth.
Please note, the horizontal drainhole and its end point must be located within the boundaries of the lease or spacing unit.

Directional surveys are required for all drainholes and directional wells.

640 Acres

BOTTOM HOLE LOCATION FOR DIRECTIONAL HOLE

SEC	TWP	RGE	COUNTY		
Spot Location	1/4	1/4	1/4	1/4	
Measured Total Depth	True Vertical Depth		BHL From Lease, Unit, or Property Line:		

BOTTOM HOLE LOCATION FOR HORIZONTAL HOLE: (LATERALS)

SEC	TWP	RGE	COUNTY		
Spot Location	1/4	1/4	1/4	1/4	
Depth of Deviation	Radius of Turn		Direction	Total Length	
Measured Total Depth	True Vertical Depth		BHL From Lease, Unit, or Property Line:		

SEC	TWP	RGE	COUNTY		
Spot Location	1/4	1/4	1/4	1/4	
Depth of Deviation	Radius of Turn		Direction	Total Length	
Measured Total Depth	True Vertical Depth		BHL From Lease, Unit, or Property Line:		

SEC	TWP	RGE	COUNTY		
Spot Location	1/4	1/4	1/4	1/4	
Depth of Deviation	Radius of Turn		Direction	Total Length	
Measured Total Depth	True Vertical Depth		BHL From Lease, Unit, or Property Line:		

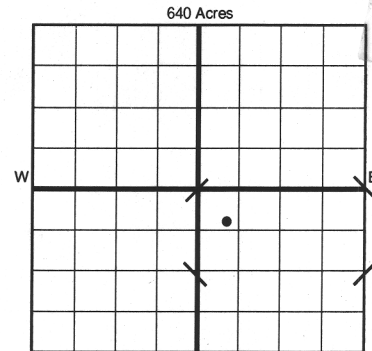
RECEIVED

Form 1002A
Rev. 2009

MAY 03 2018

OKLAHOMA CORPORATION
COMMISSION

1016EZ



LOCATE WELL

API NO. 35-109-20352
OTC PROD. UNIT NO. 109-102324

PLEASE TYPE OR USE BLACK INK ONLY
NOTE:

Attach copy of original 1002A
if recompletion or reentry.

OKLAHOMA CORPORATION COMMISSION
Oil & Gas Conservation Division
Post Office Box 52000
Oklahoma City, Oklahoma 73152-2000
Rule 165:10-3-25

☐ ORIGINAL
☒ AMENDED (Reason) Set CIBP @ 6130' & add Lower Penn perforations

TYPE OF DRILLING OPERATION

☒ STRAIGHT HOLE ☐ DIRECTIONAL HOLE ☐ HORIZONTAL HOLE
☐ SERVICE WELL

If directional or horizontal, see reverse for bottom hole location.

COUNTY Oklahoma	SEC 17	TWP 13N	RGE 03W	SPUD DATE 10/05/97
LEASE NAME Tinsley	WELL NO. 1-17	DRLG FINISHED DATE 10/09/97	DATE OF WELL COMPLETION 10/31/97	1st PROD DATE 11/10/97
SE 1/4 NW 1/4 NW 1/4 SE 1/4	FSL OF 1/4 SEC 2195'	FWL OF 1/4 SEC 441'	RECOMP DATE 6/22/17	
ELEVATION N Derrick 1179' Ground 1170'	Latitude (if known) 35.600601	Longitude (if known) -97.539064		
OPERATOR NAME Charter Oak Production Co., LLC	OTC/OCC OPERATOR NO. 21672			
ADDRESS 13929 Quail Pointe Dr.				
CITY Oklahoma City	STATE OK	ZIP 73134		

COMPLETION TYPE

<input checked="" type="checkbox"/> SINGLE ZONE
<input type="checkbox"/> MULTIPLE ZONE
Application Date
<input type="checkbox"/> COMMINGLED
Application Date
LOCATION
EXCEPTION ORDER
INCREASED DENSITY
ORDER NO.

CASING & CEMENT (Form 1002C must be attached)

TYPE	SIZE	WEIGHT	GRADE	FEET	PSI	SAX	TOP OF CMT
CONDUCTOR							
SURFACE	10 3/4"	40#	K-55	1230'	1000	900	Surface
INTERMEDIATE							
PRODUCTION	4 1/2"	11.6#	K-55	6596'	4400	885	5080'
LINER							

PACKER @ 5750' BRAND & TYPE Arrow Set II PLUG @ 6130' TYPE CIBP PLUG @ TYPE
PACKER @ BRAND & TYPE PLUG @ TYPE PLUG @ TYPE

TOTAL DEPTH 6596' 7539' Per original 1002A

COMPLETION & TEST DATA BY PRODUCING FORMATION - 401P5LVL

FORMATION	Lower Penn	Lower Penn	Lower Penn	
SPACING & SPACING ORDER NUMBER	80 Ac. - 155079	80 Ac. - 155079	80 Ac. - 155079	
CLASS: Oil, Gas, Dry, Inj, Disp, Comm Disp, Svc	Gas	Gas	Gas	
PERFORATED INTERVALS	6230' - 6238'	6149' - 6157'	5804' - 5824'	
	6353' - 6359'	6162' - 6166'		
		6170' - 6174'		
ACID/VOLUME	500 gal 7.5% acid	2500 gal 15% NeFe	3000 gal 7.5% acid	
FRACTURE TREATMENT (Fluids/Prop Amounts)	Yes	28 BBL 2% KCl	24 BBL 2% KCl	
	180,000 Gal Diesel			

No New Frac

Min Gas Allowable (165:10-17)

Gas Purchaser/Measurer
First Sales Date

DCP Midstream

INITIAL TEST DATA

INITIAL TEST DATE	1/1/98	3/6/17	6/22/17
OIL-BBL/DAY	1	N/A	0
OIL-GRAVITY (API)		N/A	
GAS-MCF/DAY	200	N/A	353
GAS-OIL RATIO CU FT/BBL	200,000:1	N/A	N/A
WATER-BBL/DAY	0	N/A	2
PUMPING OR FLOWING	Flowing	Swab	Flowing
INITIAL SHUT-IN PRESSURE	2100 psi	620 psi	1200 psi
CHOKE SIZE	20/64	N/A	10/64
FLOW TUBING PRESSURE	200 psi	N/A	1420 psi

AS SUBMITTED

A record of the formations drilled through, and pertinent remarks are presented on the reverse. I declare that I have knowledge of the contents of this report and am authorized by my organization to make this report, which was prepared by me or under my supervision and direction, with the data and facts stated herein to be true, correct, and complete to the best of my knowledge and belief.

SIGNATURE John C. Brevetti NAME (PRINT OR TYPE) JC Brevetti, Engineering Tech. DATE 5/2/18 PHONE NUMBER (405) 286-0361
13929 Quail Pointe Dr. Oklahoma City OK 73134 brevetti@charteroakproduction.com
ADDRESS CITY STATE ZIP EMAIL ADDRESS

SCANNED

E2

Handwritten signature and initials.