

Oklahoma Corporation Commission  
Oil & Gas Conservation Division  
Post Office Box 52000  
Oklahoma City, Oklahoma 73152-2000  
Rule 165: 10-3-25

Form 1002A

API No.: 35071248790001

**Completion Report**

Spud Date: November 15, 2017

OTC Prod. Unit No.:

Drilling Finished Date: November 20, 2017

1st Prod Date: December 14, 2017

Completion Date: December 01, 2017

**Drill Type: STRAIGHT HOLE**

Well Name: WILDCAT 1

Purchaser/Measurer:

Location: KAY 28 28N 1E  
C SE SE NW  
330 FSL 2310 FWL of 1/4 SEC  
Derrick Elevation: 0 Ground Elevation: 1086

First Sales Date:

Operator: PRAIRIE WIND OIL LLC 23998

8900 W PECKHAM RD  
NEWKIRK, OK 74647-7242

Completion Type		Location Exception		Increased Density	
X	Single Zone	Order No		Order No	
	Multiple Zone	There are no Location Exception records to display.		There are no Increased Density records to display.	
	Commingled				

Casing and Cement							
Type	Size	Weight	Grade	Feet	PSI	SAX	Top of CMT
SURFACE	8 5/8	24	J-55	330	500	230	SURFACE
PRODUCTION	5 1/2	17		3800		250	3500

Liner								
Type	Size	Weight	Grade	Length	PSI	SAX	Top Depth	Bottom Depth
There are no Liner records to display.								

**Total Depth: 3800**

Packer		Plug	
Depth	Brand & Type	Depth	Plug Type
There are no Packer records to display.		There are no Plug records to display.	

Initial Test Data										
Test Date	Formation	Oil BBL/Day	Oil-Gravity (API)	Gas MCF/Day	Gas-Oil Ratio Cu FT/BBL	Water BBL/Day	Pumpin or Flowing	Initial Shut-In Pressure	Choke Size	Flow Tubing Pressure
Dec 14, 2017	MISSISSIPPI	5				200	PUMPING	100		

**Completion and Test Data by Producing Formation**

Formation Name: MISSISSIPPI

Code: 351MISS

Class: OIL

**Spacing Orders**

**Order No**

**Unit Size**

There are no Spacing Order records to display.

**Perforated Intervals**

**From**

**To**

3576

3596

**Acid Volumes**

750 GALLONS 10% 80 BARRELS FLUSH

**Fracture Treatments**

630 BARRELS GEL SALTWATER, 20,000 POUNDS 20/40 SAND

Formation	Top
HOOVER	1800
ENDICOTT	2040
HASKELL	2200
TONKAWA	2380
LAYTON	2854
OSWEGO	3257
BARTLESVILLE	3400
MISSISSIPPI	3500
WILCOX	3608
ARBUCKLE	3750

Were open hole logs run? No

Date last log run: November 20, 2017

Were unusual drilling circumstances encountered? No

Explanation:

**Other Remarks**

OCC - RE-PUSH PER OPERATOR NO OPEN HOLE LOGS RUN.

**FOR COMMISSION USE ONLY**

1138555

Status: Accepted

# RECEIVED

JAN 10 2018

Form 1002A  
Rev. 2009

OKLAHOMA CORPORATION COMMISSION

OKLAHOMA CORPORATION COMMISSION  
Oil & Gas Conservation Division  
Post Office Box 52000  
Oklahoma City, Oklahoma 73152-2000  
Rule 165:10-3-25

PLEASE TYPE OR USE BLACK INK ONLY  
NOTE:

Attach copy of original 1002A  
if recompletion or reentry.

API NO. 071-24879  
OTC PROD. UNIT NO. 23978

☒ ORIGINAL  
☐ AMENDED (Reason)

## COMPLETION REPORT

### TYPE OF DRILLING OPERATION

☒ STRAIGHT HOLE ☐ DIRECTIONAL HOLE ☐ HORIZONTAL HOLE  
☐ SERVICE WELL

If directional or horizontal, see reverse for bottom hole location.

COUNTY KAY SEC 28 TWP 28N RGE 01E

LEASE NAME Wildcat WELL NO. 1

SE 1/4 SE 1/4 NW 1/4 1/4 FSL OF 1/4 SEC 330 FWL OF 1/4 SEC 2310

ELEVATION Ground 1086 Latitude (if known)

OPERATOR NAME Prairie Wind Oil LLC

ADDRESS 8900 West Peckham Rd

CITY Newkirk STATE OK ZIP 74647-7242

SPUD DATE 11-15-17

DRLG FINISHED DATE 11-20-17

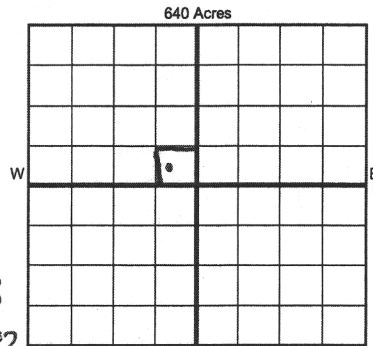
DATE OF WELL COMPLETION 12-1-17

1st PROD DATE 12-14-17

RECOMP DATE

Longitudinal (if known)

OTC/OCC OPERATOR NO. 81-511774



### COMPLETION TYPE

☒ SINGLE ZONE  
☐ MULTIPLE ZONE  
Application Date  
☐ COMMINGLED  
Application Date  
LOCATION  
EXCEPTION ORDER  
INCREASED DENSITY  
ORDER NO.

### CASING & CEMENT (Form 1002C must be attached)

TYPE	SIZE	WEIGHT	GRADE	FEET	PSI	SAX	TOP OF CMT
CONDUCTOR							
SURFACE	8 5/8	24	J-55	330	500	230	Surface
INTERMEDIATE	5 1/2	17		3800		250	3500
PRODUCTION							
LINER							
						TOTAL DEPTH	3800

PACKER @ BRAND & TYPE PLUG @ TYPE PLUG @ TYPE  
PACKER @ BRAND & TYPE PLUG @ TYPE PLUG @ TYPE

### COMPLETION & TEST DATA BY PRODUCING FORMATION

FORMATION	Mississippi					Monitor
SPACING & SPACING ORDER NUMBER	none					Report to FracFocus
CLASS: Oil, Gas, Dry, Inj, Disp, Comm Disp, Svc	oil					
PERFORATED INTERVALS	3576	40 holes				
	3596					
ACID/VOLUME	750 gals	10 %	80 bbls flush			
FRACTURE TREATMENT (Fluids/Prop Amounts)	630 bbls gel	saltwater				
	20,000 pds	20/40 sand				

Min Gas Allowable (165:10-17-7)

☐

OR  
Oil Allowable (165:10-13-3)

Gas Purchaser/Measurer  
First Sales Date

### INITIAL TEST DATA

INITIAL TEST DATE	12-14-17					
OIL-BBL/DAY	5					
OIL-GRAVITY (API)						
GAS-MCF/DAY	none					
GAS-OIL RATIO CU FT/BBL						
WATER-BBL/DAY	200 bbls					
PUMPING OR FLOWING	Pumping					
INITIAL SHUT-IN PRESSURE	100 psi					
CHOKE SIZE						
FLOW TUBING PRESSURE						

A record of the formations drilled through, and pertinent remarks are presented on the reverse. I declare that I have knowledge of the contents of this report and am authorized by my organization to make this report, which was prepared by me or under my supervision and direction, with the data and facts stated herein to be true, correct, and complete to the best of my knowledge and belief.

SIGNATURE Brenden Ford DATE 12-26-17 (580) 363-6622  
8900 West Peckham Rd Newkirk, OK 74647 Fordfarm509@gmail.com  
ADDRESS CITY STATE ZIP EMAIL ADDRESS

AS SUBMITTED

PLEASE TYPE OR USE BLACK INK ONLY  
FORMATION RECORD

Give formation names and tops, if available, or descriptions and thickness of formations drilled through. Show intervals cored or drillstem tested.

LEASE NAME Wildcat

WELL NO. 1

NAMES OF FORMATIONS	TOP
Hoover	1800
Endicott	2040
Haskell	2200
Tonkawa	2380
Lantern	2854
Oswego	3257
Barkville	3400
Mississippi	3560
Wilcox	3608
Arbuckle	3750

FOR COMMISSION USE ONLY

ITD on file ☐ YES ☐ NO

APPROVED \_\_\_\_\_ DISAPPROVED \_\_\_\_\_

2) Reject Codes \_\_\_\_\_

\_\_\_\_\_

\_\_\_\_\_

\_\_\_\_\_

\_\_\_\_\_

Were open hole logs run? ☒ yes ☒ no *per operator*

Date Last log was run 11-20-17 *DRA 5-14-18*

Was CO<sub>2</sub> encountered? ☐ yes ☒ no at what depths? \_\_\_\_\_

Was H<sub>2</sub>S encountered? ☐ yes ☒ no at what depths? \_\_\_\_\_

Were unusual drilling circumstances encountered? ☐ yes ☒ no

If yes, briefly explain below \_\_\_\_\_

Other remarks:

640 Acres


If more than three drainholes are proposed, attach a separate sheet indicating the necessary information.

Direction must be stated in degrees azimuth. Please note, the horizontal drainhole and its end point must be located within the boundaries of the lease or spacing unit.

Directional surveys are required for all drainholes and directional wells.

640 Acres


BOTTOM HOLE LOCATION FOR DIRECTIONAL HOLE

SEC	TWP	RGE	COUNTY
Spot Location			
1/4	1/4	1/4	1/4
Measured Total Depth		True Vertical Depth	BHL From Lease, Unit, or Property Line:

BOTTOM HOLE LOCATION FOR HORIZONTAL HOLE: (LATERALS)

LATERAL #1

SEC	TWP	RGE	COUNTY
Spot Location			
1/4	1/4	1/4	1/4
Depth of Deviation		Radius of Turn	Direction
Measured Total Depth		True Vertical Depth	Total Length
BHL From Lease, Unit, or Property Line:			

LATERAL #2

SEC	TWP	RGE	COUNTY
Spot Location			
1/4	1/4	1/4	1/4
Depth of Deviation		Radius of Turn	Direction
Measured Total Depth		True Vertical Depth	Total Length
BHL From Lease, Unit, or Property Line:			

LATERAL #3

SEC	TWP	RGE	COUNTY
Spot Location			
1/4	1/4	1/4	1/4
Depth of Deviation		Radius of Turn	Direction
Measured Total Depth		True Vertical Depth	Total Length
BHL From Lease, Unit, or Property Line:			