

Oklahoma Corporation Commission  
Oil & Gas Conservation Division  
Post Office Box 52000  
Oklahoma City, Oklahoma 73152-2000  
Rule 165: 10-3-25

Form 1002A

API No.: 35119240210002

**Completion Report**

Spud Date: April 02, 2013

OTC Prod. Unit No.:

Drilling Finished Date: April 24, 2013

1st Prod Date: May 22, 2013

**Amended**

Completion Date: May 16, 2013

Amend Reason: CORRECT BOTTOM HOLE LOCATION

**Drill Type: HORIZONTAL HOLE**

Well Name: TIGER 1-15H

Purchaser/Measurer:

Location: PAYNE 15 20N 4E  
SW SE SE SW  
150 FSL 2100 FWL of 1/4 SEC  
Derrick Elevation: 1024 Ground Elevation: 1009

First Sales Date:

Operator: TREY RESOURCES INC 13651  
PO BOX 50272  
601 N MARIENFELD 4TH FLR  
MIDLAND, TX 79710-0272

Completion Type		Location Exception		Increased Density	
X	Single Zone	Order No		Order No	
	Multiple Zone	615939		There are no Increased Density records to display.	
	Commingled				

Casing and Cement							
Type	Size	Weight	Grade	Feet	PSI	SAX	Top of CMT
CONDUCTOR	16			55		8	SURFACE
SURFACE	9 5/8	36	J-55	420		235	SURFACE
PRODUCTION	7	26	P-110	4712		220	3358

Liner								
Type	Size	Weight	Grade	Length	PSI	SAX	Top Depth	Bottom Depth
LINER	4 1/2	11.6	P-110	4047	0	355	4578	

**Total Depth: 8625**

Packer	
Depth	Brand & Type
There are no Packer records to display.	

Plug	
Depth	Plug Type
There are no Plug records to display.	

Initial Test Data
-------------------

Test Date	Formation	Oil BBL/Day	Oil-Gravity (API)	Gas MCF/Day	Gas-Oil Ratio Cu FT/BBL	Water BBL/Day	Pumpin or Flowing	Initial Shut-In Pressure	Choke Size	Flow Tubing Pressure
Jul 13, 2013	MISSISSIPPIAN	137		77	562	1500	PUMPING			

#### Completion and Test Data by Producing Formation

Formation Name: MISSISSIPPIAN

Code: 359MSSP

Class: OIL

#### Spacing Orders

Order No	Unit Size
607260	640

#### Perforated Intervals

From	To
4556	8536

#### Acid Volumes

1,000 GALLONS 15% AND 1,680 GALLONS 7 1/2% HCL, 929 BARRELS 15% HCL
------------------------------------------------------------------------

#### Fracture Treatments

924,184 POUNDS 40/70 SAND AND 2,547,972 GALS TREATED WATER
---------------------------------------------------------------

Formation	Top
CHECKERBOARD	3053
BIG LIME	3244
OSWEGO	3388
VERDIGRIS	3515
PINK LIME	3633
RED FORK	3652
MISSISSIPPI	3895

Were open hole logs run? Yes

Date last log run: April 13, 2013

Were unusual drilling circumstances encountered? No

Explanation:

#### Other Remarks

SPOT LOCATION WAS INCORRECTLY FILED ON ORIGINAL COMPLETION.

#### Lateral Holes

Sec: 15 TWP: 20N RGE: 4E County: PAYNE

NW NE NE NW

163 FNL 2053 FWL of 1/4 SEC

Depth of Deviation: 3332 Radius of Turn: 1059 Direction: 358 Total Length: 4955

Measured Total Depth: 8625 True Vertical Depth: 4036 End Pt. Location From Release, Unit or Property Line: 163

#### FOR COMMISSION USE ONLY

1138489

Status: Accepted



PLEASE TYPE OR USE BLACK INK ONLY  
FORMATION RECORD

Give formation names and tops, if available, or descriptions and thickness of formations drilled through. Show intervals cored or drillstem tested.

LEASE NAME Tiger

WELL NO. 1-15H

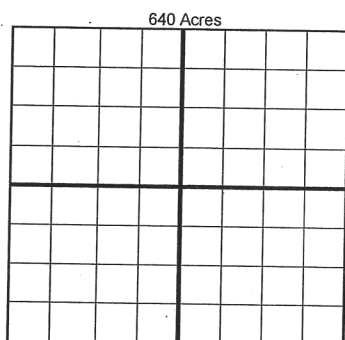
NAMES OF FORMATIONS	TOP
Checkerboard	3053'TVD
Big Lime	3244'
Oswego	3388'
Verdigris	3515'
Pink Lime	3633'
Red Fork	3652'
Mississippi	3895'

FOR COMMISSION USE ONLY	
ITD on file <input type="checkbox"/> YES <input type="checkbox"/> NO	
APPROVED _____	DISAPPROVED _____
2) Reject Codes	
_____	
_____	
_____	
_____	

Were open hole logs run?	<u>X</u> yes <input type="checkbox"/> no
Date Last log was run	<u>4/13/2013</u>
Was CO <sub>2</sub> encountered?	<input type="checkbox"/> yes <u>X</u> no at what depths? _____
Was H <sub>2</sub> S encountered?	<input type="checkbox"/> yes <u>X</u> no at what depths? _____
Were unusual drilling circumstances encountered?	<input type="checkbox"/> yes <u>X</u> no
If yes, briefly explain below	

Other remarks:

Spot location was incorrectly filed on original completion

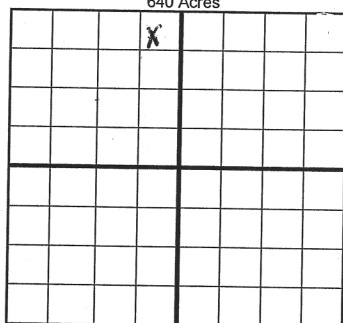


If more than three drainholes are proposed, attach a separate sheet indicating the necessary information.

Direction must be stated in degrees azimuth. Please note, the horizontal drainhole and its end point must be located within the boundaries of the lease or spacing unit.

Directional surveys are required for all drainholes and directional wells.

640 Acres



BOTTOM HOLE LOCATION FOR DIRECTIONAL HOLE

SEC	TWP	RGE	COUNTY
Spot Location	1/4	1/4	1/4
Measured Total Depth	True Vertical Depth	Feet From 1/4 Sec Lines	FSL FWL
BHL From Lease, Unit, or Property Line:			

BOTTOM HOLE LOCATION FOR HORIZONTAL HOLE: (LATERALS)

LATERAL #1			
SEC	TWP	RGE	COUNTY
15	20N	4E	Payne
Spot Location	1/4	1/4	1/4
Depth of Deviation	3332'	Radius of Turn	1059'
Measured Total Depth	8625'	True Vertical Depth	4036'
Direction		358	Total Length 4955'
BHL From Lease, Unit, or Property Line:		163'	

LATERAL #2

SEC	TWP	RGE	COUNTY
Spot Location	1/4	1/4	1/4
Depth of Deviation	Radius of Turn	Direction	Total Length
Measured Total Depth	True Vertical Depth	BHL From Lease, Unit, or Property Line:	

LATERAL #3

SEC	TWP	RGE	COUNTY
Spot Location	1/4	1/4	1/4
Depth of Deviation	Radius of Turn	Direction	Total Length
Measured Total Depth	True Vertical Depth	BHL From Lease, Unit, or Property Line:	

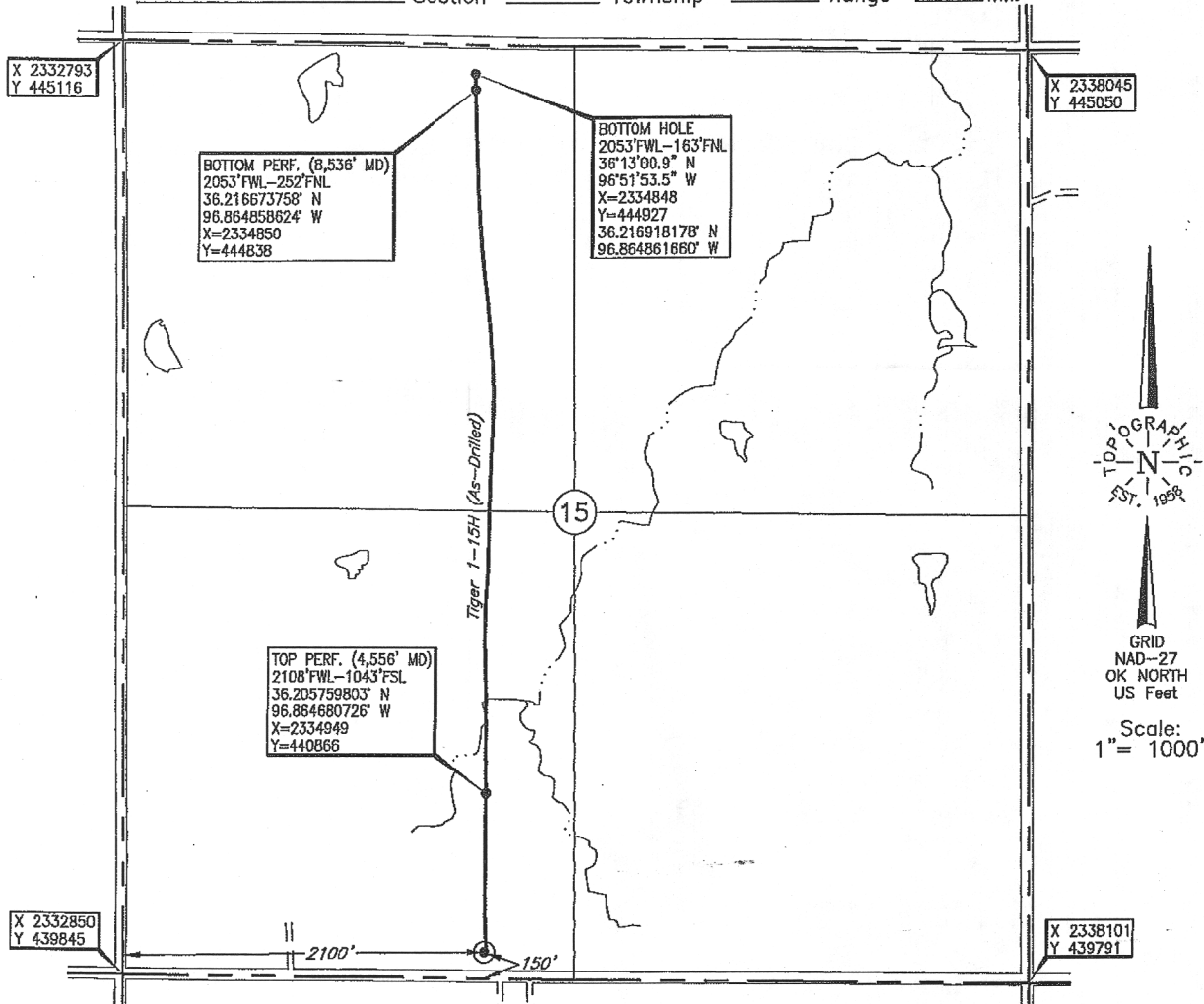
CD # 201208001

**TOPOGRAPHIC LAND SURVEYORS OF OKLAHOMA**6709 NORTH CLASSEN BLVD., OKLA. CITY, OKLA. 73116 \* LOCAL (405) 843-4847 \* OUT OF STATE (800) 654-3219  
Certificate of Authorization No. 1293.

PAYNE

County, Oklahoma

150' FSL - 2100' FWL Section 15 Township 20N Range 4E I.M.

Operator: RED FORK (USA) INVESTMENTS, INC.Lease Name: TIGERWell No.: 1-15H**ELEVATION:**1009' Gr. at StakeTopography & Vegetation Loc. fell in level pasture.Good Drill Site? Yes Reference Stakes or Alternate Location Stakes Set NoneBest Accessibility to Location From South off county roadDistance & Direction From Glencoe, Oklahoma, go ± 2.7 miles South on St. Hwy 108, then go 3 miles East and 1 mile North to the Southwest Corner of Section 15, T20N - R4E.

(This information was gathered with a GPS receiver with ±1.0 feet accuracy.)

DATUM: NAD-27  
 LAT: 36°12'11.9"N  
 LONG: 96°51'53.0"W  
 LAT: 36.203305174° N  
 LONG: 96.864718322° W

STATE PLANE  
 COORDINATES (US Feet):  
 ZONE: OK NORTH  
 X: 2334949  
 Y: 439973

200626 Date of Drawing: May 01, 2013  
 Invoice # 193950 Date Staked: Dec. 17, 2012

JP

**FINAL AS-DRILLED PLAT**

AS-DRILLED INFORMATION  
 FURNISHED BY RED FORK (USA) INVESTMENTS, INC.