

Oklahoma Corporation Commission
Oil & Gas Conservation Division
Post Office Box 52000
Oklahoma City, Oklahoma 73152-2000
Rule 165: 10-3-25

Form 1002A

API No.: 35073256230000

Completion Report

Spud Date: May 10, 2017

OTC Prod. Unit No.: 073-222415

Drilling Finished Date: September 01, 2017

1st Prod Date: October 20, 2017

Completion Date: October 07, 2017

Drill Type: HORIZONTAL HOLE

Min Gas Allowable: Yes

Well Name: MUEGGENBORG 5-17-6 2H

Purchaser/Measurer: CHESAPEAKE OPERATING LLC

First Sales Date: 10/22/2017

Location: KINGFISHER 8 17N 6W
NE NW NE NW
325 FNL 1831 FWL of 1/4 SEC
Latitude: 35.969926 Longitude: -97.865331
Derrick Elevation: 1103 Ground Elevation: 1076

Operator: CHESAPEAKE OPERATING LLC 17441
PO BOX 18496
6100 N WESTERN AVE
OKLAHOMA CITY, OK 73154-0496

Completion Type		Location Exception		Increased Density	
X	Single Zone	Order No		Order No	
	Multiple Zone	670425		663172	
	Commingled				

Casing and Cement							
Type	Size	Weight	Grade	Feet	PSI	SAX	Top of CMT
SURFACE	9 5/8	36	J-55	1528		580	SURFACE
PRODUCTION	7	26	P-110EC	7061		320	3518

Liner								
Type	Size	Weight	Grade	Length	PSI	SAX	Top Depth	Bottom Depth
LINER	4 1/2	13.50	P-110EC	5228	0	560	6733	11961

Total Depth: 11961

Packer		Plug	
Depth	Brand & Type	Depth	Plug Type
There are no Packer records to display.		11796	PERMANENT BP

Initial Test Data

Test Date	Formation	Oil BBL/Day	Oil-Gravity (API)	Gas MCF/Day	Gas-Oil Ratio Cu FT/BBL	Water BBL/Day	Pumpin or Flowing	Initial Shut-In Pressure	Choke Size	Flow Tubing Pressure
Dec 02, 2017	OSWEGO	422	40.11	363	860	374	PUMPING			91

Completion and Test Data by Producing Formation									
Formation Name: OSWEGO				Code: 404OSWG			Class: OIL		
Spacing Orders				Perforated Intervals					
Order No		Unit Size		From			To		
662867		640		6915			11792		
Acid Volumes				Fracture Treatments					
298,850 GALLONS ACID				48,801 BBLS FLUIDS					

Formation	Top
OSWEGO	6864

Were open hole logs run? No

Date last log run:

Were unusual drilling circumstances encountered? No

Explanation:

Other Remarks
There are no Other Remarks.

Lateral Holes
Sec: 5 TWP: 17N RGE: 6W County: KINGFISHER NE NE NW NW 165 FNL 1299 FWL of 1/4 SEC Depth of Deviation: 5680 Radius of Turn: 869 Direction: 357 Total Length: 5097 Measured Total Depth: 11961 True Vertical Depth: 6549 End Pt. Location From Release, Unit or Property Line: 165

FOR COMMISSION USE ONLY
<div>Status: Accepted</div> <div>1138465</div>

API NO. 073-25623
OTC PROD.
UNIT NO. 073-222415

PLEASE TYPE OR USE BLACK INK ONLY
NOTE:
Attach copy of original 1002A if recompletion or reentry.

OKLAHOMA CORPORATION COMMISSION
Oil & Gas Conservation Division
Post Office Box 52000
Oklahoma City, Oklahoma 73152-2000
Rule 165:10-3-25

Form 1002A
Rev. 2009

RECEIVED

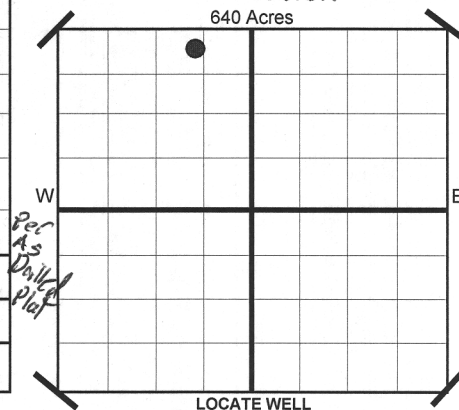
DEC 15 2017

☒ ORIGINAL
☐ AMENDED
Reason Amended

TYPE OF DRILLING OPERATION
☐ STRAIGHT HOLE ☐ DIRECTIONAL HOLE ☒ HORIZONTAL HOLE
If directional or horizontal, see reverse for bottom hole location.

COUNTY Kingfisher SEC 8 TWP 17N RGE 6W
LEASE NAME Mueggenborg 5-17-6
SHL NE 1/4 NW 1/4 NE 1/4 NW 1/4 325
ELEVATION 1,103 Ground 1,076
Derrick Fl 1,103 Ground 1,076
OPERATOR NAME CHESAPEAKE OPERATING, L.L.C.
ADDRESS P.O. BOX 18496
CITY OKLAHOMA CITY STATE OK ZIP 73154

COMPLETION REPORT
SPUD DATE 5/10/2017
DRLG FINISHED DATE 9/1/2017
DATE OF WELL COMPLETION 10/7/2017
1ST PROD DATE 10/20/2017
RECOMP DATE
WELL NO 2H
FWL OF 1/4 SEC 1,831
Latitude (if Known) 35.969926
Longitude (if Known) -97.865331
OTC/OCC OPERATOR NO. 17441



COMPLETION TYPE

☒ SINGLE ZONE
☐ MULTIPLE ZONE
Application Date
☐ COMMINGLED
Application Date
LOCATION EXCEPTION ORDER NO. 670425 F.O.
INCREASED DENSITY ORDER NO. 663172

CASING & CEMENT (Form 1002C must be attached)

TYPE	SIZE	WEIGHT	GRADE	FEET	PSI	SAX	TOP
CONDUCTOR							
SURFACE	9-5/8"	36#	J-55	1,528		580	Surface
INTERMEDIATE							
PRODUCTION	7"	26#	P-110EC	7,061		320	3,518
LINER	4-1/2"	13.50#	P-110EC	6,733-11,961		560	6,733
							11,961

PACKER @ BRAND & TYPE
PACKER @ BRAND & TYPE

PLUG @ TYPE
PLUG @ TYPE
PLUG @ 11,796 TYPE Perm BP
PLUG @ TYPE

TOTAL DEPTH

COMPLETION & TEST DATA BY PRODUCING FORMATION

FORMATION Oswego
SPACING & SPACING 640
ORDER NUMBER 662867
CLASS: Oil, Gas, Dry, Inj. Oil
Disp, Comm Disp, Svc
PERFORATED INTERVALS 6,915 - 11,792
ACID/VOLUME 298,850 gals acid
FRACTURE TREATMENT 48,801 gals acid Bbls Fluids
(Fluids/Prop Amounts)

☒ Minimum Gas Allowable (165:10-17-7) Gas Purchaser/Measurer Chesapeake Operating, L.L.C.
OR
1st Sales Date 10/22/2017

INITIAL TEST DATA

INITIAL TEST DATE 12/2/2017
OIL-BBL/DAY 422
OIL-GRAVITY (API) 40.11
GAS-MCF/DAY 363
GAS-OIL RATIO CU FT/BBL 860
WATER-BBL/DAY 374
PUMPING OR FLOWING Pumping
INITIAL SHUT-IN PRESSURE
CHOKE SIZE
FLOW TUBING PRESSURE 91

AS SUBMITTED

A record of the formations drilled through, and pertinent remarks are presented on the reverse. I declare that I have knowledge of the contents of this report and am authorized by my organization to make this report, which was prepared by me or under my supervision and direction, with the data and facts stated herein to be true, correct, and complete to the best of my knowledge and belief.

Juanita Cooper
SIGNATURE JUANITA COOPER - SR. REGULATORY ANALYST 12/14/2017 405-848-8000
P.O. BOX 18496 OKLAHOMA CITY OK 73154 juanita.cooper@chk.com
ADDRESS CITY STATE ZIP EMAIL ADDRESS

PLEASE TYPE OR USE BLACK INK ONLY
FORMATION RECORD

Give formation names and tops, if available, or descriptions and thickness of formations drilled through. Show intervals cored or drillstem tested.

LEASE NAME Mueggenborg 5-17-6

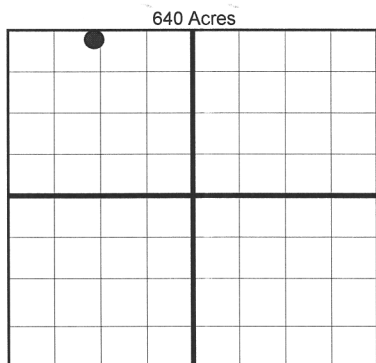
WELL NO. 2H

NAMES OF FORMATIONS	TOP
Oswego	6,864

FOR COMMISSION USE ONLY	
ITD on file <input type="checkbox"/> YES <input type="checkbox"/> NO	
APPROVED _____	DISAPPROVED _____
2) Reject Codes	

Were open hole logs run? _____ yes <u>X</u> no
Date Last log was run <u>N/A</u>
Was CO ₂ encountered? _____ yes <u>X</u> no at what depths?
Was H ₂ S encountered? _____ yes <u>X</u> no at what depths?
Were unusual drilling circumstances encountered? _____ yes <u>X</u> no
If yes, briefly explain.

Other remarks:



BOTTOM HOLE LOCATION FOR DIRECTIONAL HOLE

SEC	TWP	RGE	COUNTY
Spot Location			
1/4 1/4 1/4 1/4	Feet From 1/4 Sec Lines FSL FWL		
Measured Total Depth	True Vertical Depth	BHL From Lease, Unit, or Property Line:	

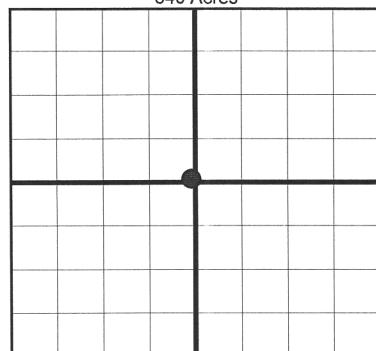
BOTTOM HOLE LOCATION FOR HORIZONTAL HOLE: (LATERALS)

SEC	TWP	RGE	COUNTY
5	17N	6W	Kingfisher
Spot Location			
NE 1/4 NE 1/4 NW 1/4 NW 1/4	Feet From 1/4 Sec Lines FNL 165 FWL 1,299		
Depth of Deviation 5,680	Radius of Turn 869	Direction 357	Total Length 5,097
Measured Total Depth 11,961	True Vertical Depth 6,549	BHL From Lease, Unit, or Property Line: 165	

If more than three drainholes are proposed, attach a separate sheet indicating the necessary information.

Direction must be stated in degrees azimuth. Please note, the horizontal drainhole and its end point must be located within the boundaries of the lease or spacing unit.

Directional surveys are required for all drainholes and directional wells.



LATERAL #2

SEC	TWP	RGE	COUNTY
Spot Location			
1/4 1/4 1/4 1/4	Feet From 1/4 Sec Lines FSL FWL		
Depth of Deviation	Radius of Turn	Direction	Total Length
Measured Total Depth	True Vertical Depth	BHL From Lease, Unit, or Property Line:	

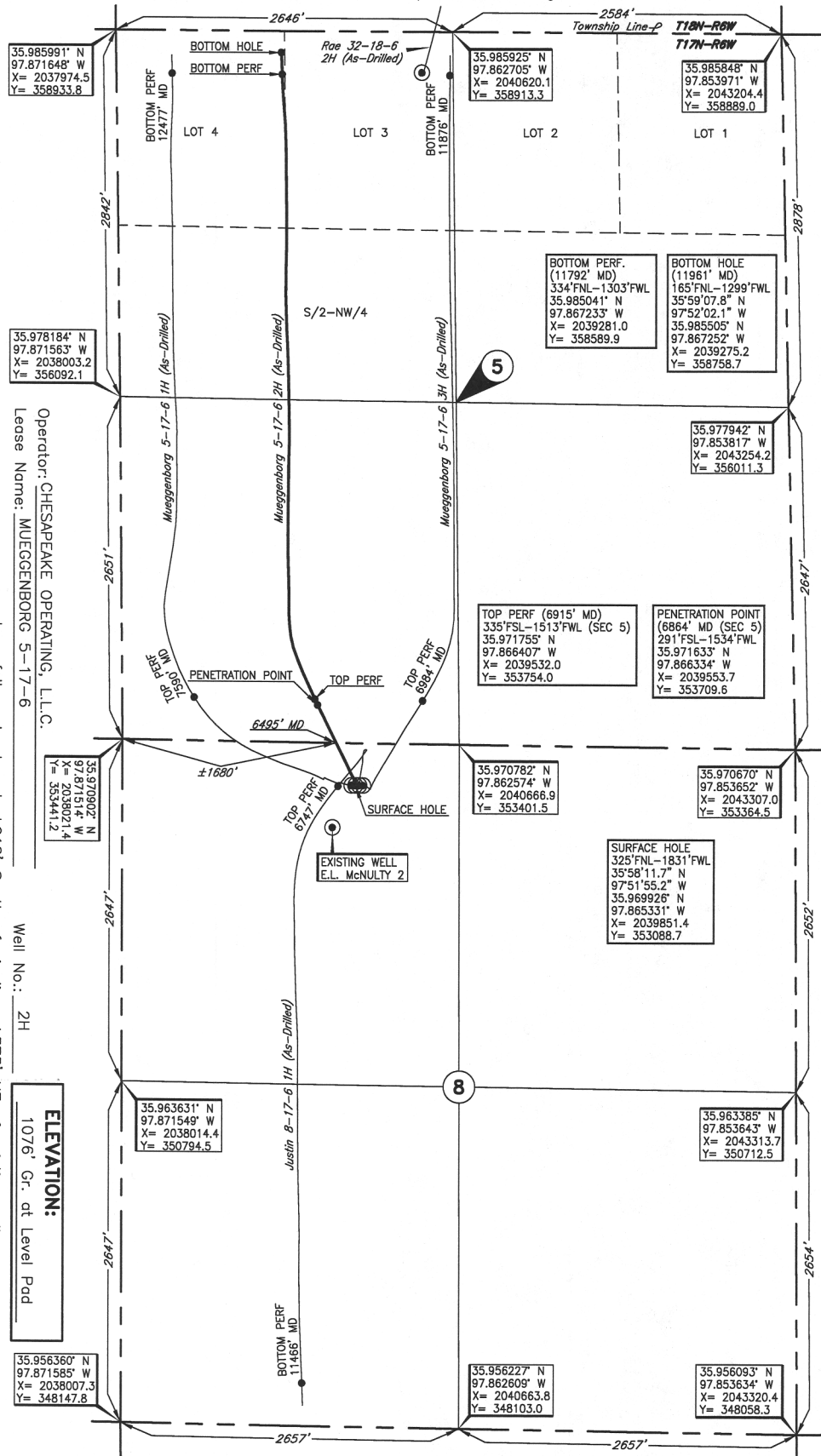
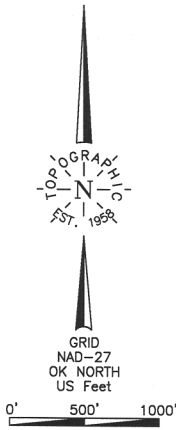
LATERAL #3

SEC	TWP	RGE	COUNTY
Spot Location			
1/4 1/4 1/4 1/4	Feet From 1/4 Sec Lines FSL FWL		
Depth of Deviation	Radius of Turn	Direction	Total Length
Measured Total Depth	True Vertical Depth	BHL From Lease, Unit, or Property Line:	

KINGFISHER

County, Oklahoma

325'FNL - 1831'FWL Section 8 Township 17N Range 6W 1.M.



Best Accessability to Location _____ From North off county road
Distance & Direction _____ From Dover, OK, go ± 1.5 mi. South on US Hwy. 81, then ± 3.5 mi. East,
then ± 1.0 mi. North, then ± 1.0 mi. West to the NW Cor. of Sec. 8-T17N-R6W

Good Drill Site? _____ Yes _____ No

Reference Stakes or Alternate Location _____ Stakes Set _____ None

Operator: CHESAPEAKE OPERATING, L.L.C.
Lease Name: MUEGGENBORG 5-17-6
Topography & Vegetation Loc. fell on level pad, $\pm 218'$ South of pipeline, $\pm 373'$ NE of existing well

Well No.: 2H
ELEVATION:
1076' Gr. at Level Pad

DATUM: NAD-27
LAT: 35°58'11.7" N
LONG: 97°51'55.2" W
LAT: 35.969926° N
LONG: 97.865331° W
STATE PLANE
COORDINATES: (US Feet)
ZONE: OK NORTH
X: 2039851.4
Y: 353088.7

282971 Date of Drawing: Oct. 19, 2017
Invoice # 269594B Date Staked: Feb. 09, 2017 JP

FINAL AS-DRILLED PLAT

AS-DRILLED INFORMATION
FURNISHED BY CHESAPEAKE OPERATING