

Oklahoma Corporation Commission
Oil & Gas Conservation Division
Post Office Box 52000
Oklahoma City, Oklahoma 73152-2000
Rule 165: 10-3-25

Form 1002A

API No.: 35069201830000

Completion Report

Spud Date: October 21, 2017

OTC Prod. Unit No.: 069-223731

Drilling Finished Date: January 03, 2018

1st Prod Date: July 09, 2018

Completion Date: July 09, 2018

Drill Type: HORIZONTAL HOLE

Well Name: WB 3-16H9X

Purchaser/Measurer:

Location: JOHNSTON 16 4S 4E
SW NW NE SW
2295 FSL 1540 FWL of 1/4 SEC
Latitude: 34.207922 Longitude: -96.89284
Derrick Elevation: 0 Ground Elevation: 735

First Sales Date:

Operator: XTO ENERGY INC 21003

810 HOUSTON ST
FORT WORTH, TX 76102-6203

Completion Type	
X	Single Zone
	Multiple Zone
	Commingled

Location Exception	
Order No	
671419	

Increased Density	
Order No	
669671	
669672	

Casing and Cement							
Type	Size	Weight	Grade	Feet	PSI	SAX	Top of CMT
CONDUCTOR	20	84.75	J-55	107			SURFACE
SURFACE	13 3/8	54.5	J-55	562		430	SURFACE
INTERMEDIATE	9 5/8	36	J-55	2471		595	SURFACE
PRODUCTION	5 1/2	23	P-110	19050		2465	5628

Liner								
Type	Size	Weight	Grade	Length	PSI	SAX	Top Depth	Bottom Depth
There are no Liner records to display.								

Total Depth: 19054

Packer	
Depth	Brand & Type
There are no Packer records to display.	

Plug	
Depth	Plug Type
There are no Plug records to display.	

Initial Test Data

Test Date	Formation	Oil BBL/Day	Oil-Gravity (API)	Gas MCF/Day	Gas-Oil Ratio Cu FT/BBL	Water BBL/Day	Pumpin or Flowing	Initial Shut-In Pressure	Choke Size	Flow Tubing Pressure
Jul 31, 2018	WOODFORD	904	44	2069	2289	1154	FLOWING	1150	32/64	1200

Completion and Test Data by Producing Formation

Formation Name: WOODFORD

Code: 319WDFD

Class: OIL

Spacing Orders

Order No	Unit Size
542820	640
560950	640
671456	MULTIUNIT

Perforated Intervals

From	To
10706	18910

Acid Volumes

30,000 GALLONS ACID

Fracture Treatments

30 STAGES - 468,647 BARRELS TREATED WATER, 1,485,220 POUNDS 100 MESH SAND, 11,630,690 POUNDS 40/70 SAND

Formation	Top
WOODFORD	10555

Were open hole logs run? No

Date last log run:

Were unusual drilling circumstances encountered? No

Explanation:

Other Remarks

IRREGULAR SECTION. OCC - THIS DOCUMENT IS ACCEPTED BASED ON THE DATA SUBMITTED NEITHER THE FINAL LOCATION EXCEPTION NOR THE FINAL MULTIUNIT ORDERS HAVE BEEN ISSUED.

Lateral Holes

Sec: 9 TWP: 4S RGE: 4E County: JOHNSTON

NW NE NE NW

59 FNL 2190 FWL of 1/4 SEC

Depth of Deviation: 8450 Radius of Turn: 1559 Direction: 358 Total Length: 8154

Measured Total Depth: 19054 True Vertical Depth: 10477 End Pt. Location From Release, Unit or Property Line: 59

FOR COMMISSION USE ONLY

1140543

Status: Accepted

API NO. 069-20183
OTC PROD. UNIT NO. 069-223731

PLEASE TYPE OR USE BLACK INK ONLY
NOTE:

Attach copy of original 1002A
if recompletion or reentry.

OKLAHOMA CORPORATION COMMISSION
Oil & Gas Conservation Division
Post Office Box 52000
Oklahoma City, Oklahoma 73152-2000
Rule 165:10-3-25

RECEIVED

AUG 08 2018

OKLAHOMA CORPORATION
COMMISSION

Form 1002A
Rev. 2009

☒ ORIGINAL
☐ AMENDED (Reason)

COMPLETION REPORT

TYPE OF DRILLING OPERATION

☐ STRAIGHT HOLE ☐ DIRECTIONAL HOLE ☒ HORIZONTAL HOLE
☐ SERVICE WELL

If directional or horizontal, see reverse for bottom hole location.

COUNTY	Johnston	SEC	16	TWP	4S	RGE	4E	SPUD DATE	10/21/2017
LEASE NAME	WB	WELL NO.	3-16H9X	DATE OF WELL COMPLETION	7/9/2018	DATE OF WELL COMPLETION	7/9/2018	DATE OF WELL COMPLETION	7/9/2018
SW 1/4 NW 1/4 NE 1/4 SW 1/4	FSL OF 1/4 SEC	2295	FWL OF 1/4 SEC	1540	RECOMP DATE				
ELEVATION N Derrick	Ground	735'	Latitude (if known)	34.207922	Longitude (if known)	96.892840			
OPERATOR NAME	XTO Energy Inc.	OTC/OCC OPERATOR NO.	21003						
ADDRESS	210 Park Avenue, Suite 2350								
CITY	Oklahoma City	STATE	Oklahoma	ZIP	73102				

640 Acres

LOCATE WELL

COMPLETION TYPE

<input checked="" type="checkbox"/> SINGLE ZONE
<input type="checkbox"/> MULTIPLE ZONE
Application Date
COMMINGLED
Application Date
LOCATION
EXCEPTION ORDER
INCREASED DENSITY
ORDER NO.

CASING & CEMENT (Form 1002C must be attached)

TYPE	SIZE	WEIGHT	GRADE	FEET	PSI	SAX	TOP OF CMT
CONDUCTOR	20"	84.75	J-55	107			Surface
SURFACE	13 3/8"	54.5	J-55	562		430	Surface
INTERMEDIATE	9 5/8"	36	J-55	2,471		595	surface
PRODUCTION	5 1/2"	23	P-110	19,050		2465	5628
LINER							
				TOTAL DEPTH	19054'		

PACKER @ _____ BRAND & TYPE _____ PLUG @ _____ TYPE _____ PLUG @ _____ TYPE _____
PACKER @ _____ BRAND & TYPE _____ PLUG @ _____ TYPE _____ PLUG @ _____ TYPE _____

COMPLETION & TEST DATA BY PRODUCING FORMATION - 319 WDFD

FORMATION	Woodford								
SPACING & SPACING ORDER NUMBER	640: 542820, 560950								
CLASS: Oil, Gas, Dry, Inj, Disp, Comm Disp, Svc	Oil								
PERFORATED INTERVALS	30 Stages								
	10,706-18,910								
ACID/VOLUME	30,000 gals acid								
FRACTURE TREATMENT (Fluids/Prop Amounts)	468,647 BTW - Bbls treated water								
	1,485,220# 100 Mesh Sand								
	11,630,690# 40/70 Sand								

Min Gas Allowable (165:10-17-7)

Gas Purchaser/Measurer

OR
Oil Allowable (165:10-13-3)

First Sales Date

INITIAL TEST DATA

INITIAL TEST DATE	7/31/2018								
OIL-BBL/DAY	904								
OIL-GRAVITY (API)	44								
GAS-MCF/DAY	2069								
GAS-OIL RATIO CU FT/BBL	2289								
WATER-BBL/DAY	1154								
PUMPING OR FLOWING	Flowing								
INITIAL SHUT-IN PRESSURE	1150								
CHOKE SIZE	32/64"								
FLOW TUBING PRESSURE	1200 FCP								

AS SUBMITTED

A record of the formations drilled through, and pertinent remarks are presented on the reverse. I declare that I have knowledge of the contents of this report and am authorized by my organization to make this report, which was prepared by me or under my supervision and direction, with the data and facts stated herein to be true, correct, and complete to the best of my knowledge and belief.

Debbie Waggoner
SIGNATURE

Debbie Waggoner
NAME (PRINT OR TYPE)

8/6/2018 405-319-3243
DATE PHONE NUMBER

210 Park Avenue, Suite 2350

Oklahoma City

Ok

73102

debbie_waggoner@xtoenergy.com

ADDRESS

CITY

STATE

ZIP

EMAIL ADDRESS

Give formation names and tops, if available, or descriptions and thickness of formations drilled through. Show intervals cored or drillstem tested

NAMES OF FORMATIONS	TOP
WOODFORD.	10,555'

FOR COMMISSION USE ONLY	
ITD on file	<input type="checkbox"/> YES <input type="checkbox"/> NO
APPROVED	DISAPPROVED
2) Reject Codes _____ _____ _____ _____ _____	

Were open hole logs run? yes X no

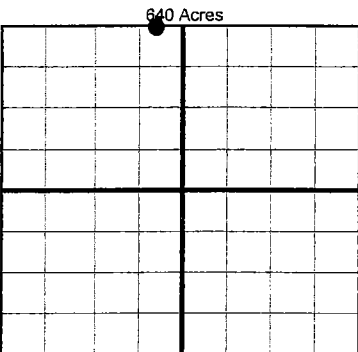
Date Last log was run _____

Was CO₂ encountered? yes X no at what depths? _____

Was H₂S encountered? yes X no at what depths? _____

Were unusual drilling circumstances encountered? yes X no

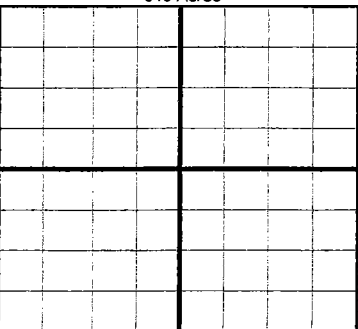
If yes, briefly explain below

[illegible]

If more than three drainholes are proposed, attach a separate sheet indicating the necessary information.

Direction must be stated in degrees azimuth.
Please note, the horizontal drainhole and its end
point must be located within the boundaries of the
lease or spacing unit.

Directional surveys are required for all drainholes and directional wells.



SEC	TWP	RGE	COUNTY Johnston			
Spot Location				Feet From 1/4 Sec Lines	FNL	FWL
1/4	1/4	1/4	1/4	BHL From Lease, Unit, or Property Line:		
Measured Total Depth		True Vertical Depth				

LATERAL #1										
SEC	9	TWP	4S	RGE	4E	COUNTY Johnston				
Spot Location		NW 1/4		NE 1/4		NW 1/4		Feet From 1/4 Sec Lines	FNL 59'	FWL 2190'
Depth of Deviation		8450'		Radius of Turn		1559.7		Direction 358 45°	Total Length	8154'
Measured Total Depth				True Vertical Depth		BHL From Lease, Unit, or Property Line:				
19054'				10477'		59' FNL & 2190 FWL				

SEC	TWP	RGE	COUNTY			
Spot Location				Feet From 1/4 Sec Lines	FSL	FWL
1/4	1/4	1/4	1/4			
Depth of Deviation		Radius of Turn	Direction	Total Length		
Measured Total Depth		True Vertical Depth	BHL From Lease, Unit, or Property Line:			

SEC	TWP	RGE	COUNTY			
Spot Location				Feet From 1/4 Sec Lines	FSL	FWL
1/4	1/4	1/4	1/4			
Depth of Deviation		Radius of Turn	Direction	Total Length		
Measured Total Depth		True Vertical Depth	BHL From Lease, Unit, or Property Line:			