

Oklahoma Corporation Commission
Oil & Gas Conservation Division
Post Office Box 52000
Oklahoma City, Oklahoma 73152-2000
Rule 165: 10-3-25

Form 1002A

API No.: 35033036300001

Completion Report

Spud Date: September 03, 1920

OTC Prod. Unit No.:

Drilling Finished Date: November 02, 1920

Amended

1st Prod Date: November 06, 1920

Amend Reason: TEMPORARILY ABANDONED

Completion Date: November 06, 1920

Recomplete Date: June 27, 2018

Drill Type: STRAIGHT HOLE

Well Name: WALTERS FIELD UNIT TRACT 3 (BILLS 14) 14

Purchaser/Measurer:

Location: COTTON 33 1S 10W
E2 E2 E2 SW
1320 FSL 2440 FWL of 1/4 SEC
Derrick Elevation: 0 Ground Elevation: 0

First Sales Date:

Operator: CLARK OPERATING INC 17923

2601 HARRISON STE 200
WICHITA FALLS, TX 76308-4030

Completion Type		Location Exception		Increased Density	
X	Single Zone	Order No		Order No	
	Multiple Zone	There are no Location Exception records to display.		There are no Increased Density records to display.	
	Commingled				

Casing and Cement							
Type	Size	Weight	Grade	Feet	PSI	SAX	Top of CMT
CONDUCTOR	12 1/2			20			
PRODUCTION	8 1/4			2064		40	

Liner								
Type	Size	Weight	Grade	Length	PSI	SAX	Top Depth	Bottom Depth
LINER	6 5/8			85	0	0	2041	2126

Total Depth: 2146

Packer		Plug	
Depth	Brand & Type	Depth	Plug Type
There are no Packer records to display.		There are no Plug records to display.	

Initial Test Data										
Test Date	Formation	Oil BBL/Day	Oil-Gravity (API)	Gas MCF/Day	Gas-Oil Ratio Cu FT/BBL	Water BBL/Day	Pumpin or Flowing	Initial Shut-In Pressure	Choke Size	Flow Tubing Pressure
There are no Initial Data records to display.										

Completion and Test Data by Producing Formation

Formation Name: PRIDDY

Code: 406PRDD

Class: TA

Formation	Top
PRIDDY SAND	2126

Were open hole logs run? No

Date last log run:

Were unusual drilling circumstances encountered? No

Explanation:

Other Remarks

FILED WITH 1003A FOR TEMPORARILY ABANDONED. OCC - THIS WELL IS AN OPEN HOLE COMPLETION FROM BOTTOM OF THE 6 5/8" LINER AT 2,126' TO TOTAL DEPTH AT 2,146'.

FOR COMMISSION USE ONLY

1140299

Status: Accepted

API NO. 033-03630
OTC PROD.
UNIT NO.

PLEASE TYPE OR USE BLACK INK ONLY

NOTE:

Attach copy of original 1002A
if recompletion or reentry.

OKLAHOMA CORPORATION COMMISSION
Oil & Gas Conservation Division
Post Office Box 52000
Oklahoma City, Oklahoma 73152-2000
Rule 165:10-3-25

Form 1002A
Rev. 2009

☐ ORIGINAL
☒ AMENDED (Reason)

T+A

COMPLETION REPORT

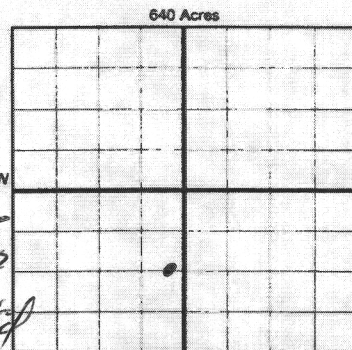
TYPE OF DRILLING OPERATION

☒ STRAIGHT HOLE ☐ DIRECTIONAL HOLE ☐ HORIZONTAL HOLE
☐ SERVICE WELL

If directional or horizontal, see reverse for bottom hole location.

COUNTY Cotton SEC 33 TWP 1S RGE 10W
LEASE NAME Walter Field Unit WELL NO. 3-14
ELEVATION 512 1/4 FSL OF 1/4 SEC 1320 FWL OF 1/4 SEC 2440
Derrick FL Ground Latitude (if known) Longitude (if known)
OPERATOR NAME CLARK OPERATING INC OTC/OCC OPERATOR NO. 17923
ADDRESS 2601 Harrison, Ste 200
CITY Wichita Falls STATE TX ZIP 76308

SPUD DATE 9-3-1920
DRLG FINISHED DATE 11-2-1920
DATE OF WELL COMPLETION 11-6-1920
1st PROD DATE 11-6-1920
RECOMP DATE 6-27-2018



COMPLETION TYPE

☒ SINGLE ZONE
☐ MULTIPLE ZONE
Application Date
COMINGLED
Application Date
LOCATION
EXCEPTION ORDER
INCREASED DENSITY
ORDER NO.

CASING & CEMENT (Form 1002C must be attached)

TYPE	SIZE	WEIGHT	GRADE	FEET	PSI	SAX	TOP OF CMT
CONDUCTOR	<u>12 1/2</u>			<u>20</u>			
SURFACE							
INTERMEDIATE							
PRODUCTION	<u>8 1/4</u>			<u>2064</u>		<u>40</u>	
LINER	<u>6 5/8</u>			<u>2041 - 85 2126</u>			
						TOTAL DEPTH	<u>2146</u>

PACKER @ _____ BRAND & TYPE _____ PLUG @ _____ TYPE _____ PLUG @ _____ TYPE _____
PACKER @ _____ BRAND & TYPE _____ PLUG @ _____ TYPE _____ PLUG @ _____ TYPE _____

COMPLETION & TEST DATA BY PRODUCING FORMATION

FORMATION	<u>Priddy Sand</u>	<u>406 PRDD</u>					
SPACING & SPACING ORDER NUMBER							
CLASS: Oil, Gas, Dry, Inj. Disp, Comm Disp, Svc	<u>TA</u>						
PERFORATED INTERVALS	<u>2126-2145</u> <u>open hole</u>						
ACID/VOLUME							
FRACTURE TREATMENT (Fluids/Prop Amounts)							

☐ Min Gas Allowable (165:10-17-7) OR Gas Purchaser/Measurer
☐ Oil Allowable (165:10-13-3) First Sales Date

INITIAL TEST DATA

INITIAL TEST DATE					
OIL-BBL/DAY					
OIL-GRAVITY (API)					
GAS-MCF/DAY					
GAS-OIL RATIO CU FT/BBL					
WATER-BBL/DAY					
PUMPING OR FLOWING					
INITIAL SHUT-IN PRESSURE					
CHOKE SIZE					
FLOW TUBING PRESSURE					

AS SUBMITTED

RECEIVED
JUN 22 2018
OKLAHOMA CORPORATION COMMISSION
COUNCIL OFFICE

A record of the formations drilled through, and pertinent remarks are presented on the reverse. I declare that I have knowledge of the contents of this report and am authorized by my organization to make this report, which was prepared by me or under my supervision and direction, with the data and facts stated herein to be true, correct, and complete to the best of my knowledge and belief.

SIGNATURE Paul Clark NAME (PRINT OR TYPE) PAUL CLARK DATE 6-13-18 PHONE NUMBER 920 704 0881
ADDRESS 2601 Harrison Ste 200 CITY Wichita Falls STATE TX ZIP 76308 EMAIL ADDRESS paul@wfdomain.com

PLEASE TYPE OR USE BLACK INK ONLY

FORMATION RECORD

Give formation names and tops, if available, or descriptions and thickness of formations drilled through. Show intervals cored or drillstem tested.

NAMES OF FORMATIONS	TOP
Priddy Sand	2126

LEASE NAME Walter Field Unit WELL NO. 3-14

FOR COMMISSION USE ONLY	
ITD on file <input type="checkbox"/> YES <input type="checkbox"/> NO	
APPROVED	DISAPPROVED
2) Reject Codes	

Were open hole logs run?	<input type="checkbox"/> yes <input type="checkbox"/> no
Date Last log was run	
Was CO ₂ encountered?	<input type="checkbox"/> yes <input type="checkbox"/> no at what depths?
Was H ₂ S encountered?	<input type="checkbox"/> yes <input type="checkbox"/> no at what depths?
Were unusual drilling circumstances encountered?	<input type="checkbox"/> yes <input type="checkbox"/> no
If yes, briefly explain below	

Other remarks:

filed with 1003A for T&A
OCC - This well is an open hole production from bottom of the 6 5/8" liner at 2126" to total depth at 2146".

640 Acres

If more than three drainholes are proposed, attach a separate sheet indicating the necessary information.

Direction must be stated in degrees azimuth. Please note, the horizontal drainhole and its end point must be located within the boundaries of the lease or spacing unit.

Directional surveys are required for all drainholes and directional wells.

640 Acres

BOTTOM HOLE LOCATION FOR DIRECTIONAL HOLE

SEC	TWP	RGE	COUNTY		
Spot Location			1/4	1/4	1/4
Measured Total Depth			True Vertical Depth		BHL From Lease, Unit, or Property Line:
			Feet From 1/4 Sec Lines		FSL
					FWL

BOTTOM HOLE LOCATION FOR HORIZONTAL HOLE: (LATERALS)

LATERAL #1

SEC	TWP	RGE	COUNTY		
Spot Location			1/4	1/4	1/4
Depth of Deviation			Radius of Turn		Direction
Measured Total Depth			True Vertical Depth		BHL From Lease, Unit, or Property Line:
			Feet From 1/4 Sec Lines		FSL
					FWL
					Total Length

LATERAL #2

SEC	TWP	RGE	COUNTY		
Spot Location			1/4	1/4	1/4
Depth of Deviation			Radius of Turn		Direction
Measured Total Depth			True Vertical Depth		BHL From Lease, Unit, or Property Line:
			Feet From 1/4 Sec Lines		FSL
					FWL
					Total Length

LATERAL #3

SEC	TWP	RGE	COUNTY		
Spot Location			1/4	1/4	1/4
Depth of Deviation			Radius of Turn		Direction
Measured Total Depth			True Vertical Depth		BHL From Lease, Unit, or Property Line:
			Feet From 1/4 Sec Lines		FSL
					FWL
					Total Length