

Oklahoma Corporation Commission  
Oil & Gas Conservation Division  
Post Office Box 52000  
Oklahoma City, Oklahoma 73152-2000  
Rule 165: 10-3-25

Form 1002A

API No.: 35049359600004

**Completion Report**

Spud Date: May 25, 1950

OTC Prod. Unit No.: 115062

Drilling Finished Date: August 18, 1950

1st Prod Date: August 27, 1950

**Amended**

Completion Date: September 12, 1950

Amend Reason: GAS ZONE PLUGGED OFF FROM FRAC ATTEMPT

Recomplete Date: February 01, 2011

**Drill Type: STRAIGHT HOLE**

Well Name: HELVEY-BONIFIELD 1

Purchaser/Measurer:

Location: GARVIN 35 2N 2W  
C SE SE  
660 FSL 1980 FWL of 1/4 SEC  
Derrick Elevation: 0 Ground Elevation: 0

First Sales Date:

Operator: CLAMPITT R L & ASSOCIATES INC 18236  
PO BOX 3313  
221 N VIRGINIA  
BARTLESVILLE, OK 74006-3313

Completion Type		Location Exception		Increased Density	
X	Single Zone	Order No		Order No	
	Multiple Zone	There are no Location Exception records to display.		There are no Increased Density records to display.	
	Commingled				

Casing and Cement							
Type	Size	Weight	Grade	Feet	PSI	SAX	Top of CMT
SURFACE	10 3/4	32.75	H-40	522		350	SURFACE
PRODUCTION	7	20 - 23	J-55	6983		600	6000

Liner								
Type	Size	Weight	Grade	Length	PSI	SAX	Top Depth	Bottom Depth
There are no Liner records to display.								

**Total Depth: 7014**

Packer		Plug	
Depth	Brand & Type	Depth	Plug Type
There are no Packer records to display.		There are no Plug records to display.	

Initial Test Data										
Test Date	Formation	Oil BBL/Day	Oil-Gravity (API)	Gas MCF/Day	Gas-Oil Ratio Cu FT/BBL	Water BBL/Day	Pumpin or Flowing	Initial Shut-In Pressure	Choke Size	Flow Tubing Pressure
There are no Initial Data records to display.										

Completion and Test Data by Producing Formation			
Formation Name: HART (4TH DEESE)		Code: 404HTDS4	Class: GAS
<b>Spacing Orders</b>		<b>Perforated Intervals</b>	
<b>Order No</b>	<b>Unit Size</b>	<b>From</b>	<b>To</b>
There are no Spacing Order records to display.		6935	6962
<b>Acid Volumes</b>		<b>Fracture Treatments</b>	
There are no Acid Volume records to display.		1,000 BARRELS, 20,000 SAND	

Formation	Top
HART SAND (FOURTH DEESE)	6932
GIBSON SAND (OIL)	6938

Were open hole logs run? Yes  
Date last log run: September 12, 1950  
  
Were unusual drilling circumstances encountered? No  
Explanation:

Other Remarks
IN 2011, 3RD DEESE (GIBSON SAND) WAS PLUGGED OFF WITH A SQUEEZE SO AS TO 1002A GAS PRODUCTION FROM HART SAND (4TH DEESE). IN PAST YEAR DURING FRAC JOB, THE HART SAND WAS ACCIDENTALLY PLUGGED OFF, SO OPERATOR HAS SHUT DOWN WELL TO BE PLUGGED UNLESS RECOMPLETED IN DEEPER INTERVAL. RLC

FOR COMMISSION USE ONLY	
Status: Accepted	1138842

# RECEIVED

FEB 09 2018

Amended 2-6-18

OKLAHOMA CORPORATION COMMISSION Form 1002A Rev. 2009

## ORIGINAL

API NO. **04935960**  
OTC PROD. UNIT NO. **115062**

PLEASE TYPE OR USE BLACK INK ONLY

NOTE:

Attach copy of original 1002A if recompletion or reentry.

☐ ORIGINAL  
☒ AMENDED (Reason)

**Gas Zone Plugged off**

OKLAHOMA CORPORATION COMMISSION  
Oil & Gas Conservation Division  
Post Office Box 52000  
Oklahoma City, Oklahoma 73152-2000  
Rule 165:10-3-25

### COMPLETION REPORT

#### TYPE OF DRILLING OPERATION

☒ STRAIGHT HOLE ☐ DIRECTIONAL HOLE ☐ HORIZONTAL HOLE  
☐ SERVICE WELL

If directional or horizontal, see reverse for bottom hole location.

COUNTY **Garvin** SEC **35** TWP **2N** RGE **2W**

LEASE NAME **Helvey-Bonifield** WELL NO. **1**

1/4 **C 1/4 SE 1/4 SE 1/4** FSL OF 1/4 SEC **660** FWL OF 1/4 SEC **1980**

ELEVATION Derrick FL **Ground** Latitude (if known)

OPERATOR NAME **R.L. Clappitt & Assoc.** OTC/OCC OPERATOR NO. **18236-0**

ADDRESS **P.O. Box 3313**

CITY **Bartlesville** STATE **OK** ZIP **74006**

SPUD DATE **5-25-50**

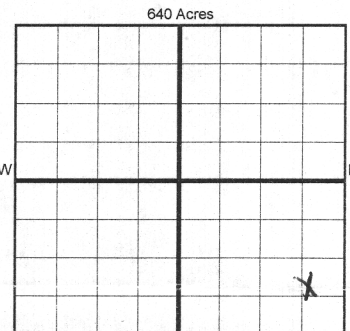
DRLG FINISHED DATE **8-18-50**

DATE OF WELL COMPLETION **9-12-50**

1st PROD DATE **6-27-50**

RECOMP DATE **2-15-2011**

Longitude (if known)



LOCATE WELL

#### COMPLETION TYPE

☒ SINGLE ZONE **#1 Deese**  
☐ MULTIPLE ZONE  
Application Date  
☐ COMMINGLED  
Application Date  
LOCATION  
EXCEPTION ORDER  
INCREASED DENSITY  
ORDER NO.

#### CASING & CEMENT (Form 1002C must be attached)

TYPE	SIZE	WEIGHT	GRADE	FEET	PSI	SAX	TOP OF CMT
CONDUCTOR							
SURFACE	10 3/4	32.75	A-40	524		350	Circulated
INTERMEDIATE							
PRODUCTION	7"	20-23	J-55	6983		600	6000
LINER							

PACKER @ \_\_\_\_\_ BRAND & TYPE \_\_\_\_\_ PLUG @ \_\_\_\_\_ TYPE \_\_\_\_\_ PLUG @ \_\_\_\_\_ TYPE \_\_\_\_\_  
PACKER @ \_\_\_\_\_ BRAND & TYPE \_\_\_\_\_ PLUG @ \_\_\_\_\_ TYPE \_\_\_\_\_ PLUG @ \_\_\_\_\_ TYPE \_\_\_\_\_

TOTAL DEPTH **7014**

#### COMPLETION & TEST DATA BY PRODUCING FORMATION

FORMATION	SPACING & SPACING ORDER NUMBER	CLASS: Oil, Gas, Dry, Inj, Disp, Comm Disp, Svc	PERFORATED INTERVALS	ACID/VOLUME	FRACTURE TREATMENT (Fluids/Prop Amounts)
<b>Lower Gibson</b>	<b>40A</b>	<b>del</b>	<b>Plugged off</b>	<b>20H</b>	<b>Thru squeeze per last 1002A</b>
<b>Hart (4" Deese)</b>	<b>40A</b>	<b>Gas</b>	<b>6935-6962</b>		<b>1000 bbl - 4 20,000 Sand</b>
<b>Old Frac</b>					

☐ Min Gas Allowable (165:10-17-7)  
OR  
☐ Oil Allowable (165:10-13-3)

Gas Purchaser/Measurer  
First Sales Date

#### INITIAL TEST DATA

INITIAL TEST DATE	<b>2-1-11</b>
OIL-BBL/DAY	
OIL-GRAVITY (API)	
GAS-MCF/DAY	<b>203 MCFD</b>
GAS-OIL RATIO CU FT/BBL	
WATER-BBL/DAY	<b>0</b>
PUMPING OR FLOWING	
INITIAL SHUT-IN PRESSURE	<b>120</b>
CHOKE SIZE	<b>open</b>
FLOW TUBING PRESSURE	<b>1</b>

## AS SUBMITTED

A record of the formations drilled through, and pertinent remarks are presented on the reverse. I declare that I have knowledge of the contents of this report and am authorized by my organization to make this report, which was prepared by me or under my supervision and direction, with the data and facts stated herein to be true, correct, and complete to the best of my knowledge and belief.

SIGNATURE **R.L. Clappitt** NAME (PRINT OR TYPE) **R.L. Clappitt** DATE **2-6-18** PHONE NUMBER **918-336-6668**  
ADDRESS **P.O. Box 3313** CITY **Bartlesville** STATE **OK** ZIP **74006** EMAIL ADDRESS **Richarlee@aol.com**

### FORMATION RECORD

LEASE NAME	WELL NO.
------------	----------

NAMES OF FORMATIONS	TOP
<p>Gibson Sand (0.1)</p> <p>Hart Sand (Fourth Deep)</p>	<p>6938</p> <p>6932</p>

FOR COMMISSION USE ONLY	
ITD on file	<input type="checkbox"/> YES <input type="checkbox"/> NO
APPROVED	DISAPPROVED
2) Reject Codes	

Were open hole logs run? ~~X~~ yes no

Date Last log was run 09-12-50 IES

Was CO<sub>2</sub> encountered? yes ~~X~~ no at what depths? \_\_\_\_\_

Was H<sub>2</sub>S encountered? yes ~~X~~ no at what depths? \_\_\_\_\_

Were unusual drilling circumstances encountered? yes no

If yes, briefly explain below

Other remarks:

Remarks: In 2011, 3rd Deese (Gibson Sand) was plugged off so as to <sup>1002A</sup> permit gas production from Hart Sand (4th Deese).

In Year during Frac Job, the Hart Sand was accidentally plugged off, so operator has Shutdown well to be plugged unless recompleted in deeper interval, RFE

640 Acres

Direction must be stated in degrees azimuth.  
Please note, the horizontal drainhole and its end  
point must be located within the boundaries of the  
lease or spacing unit.

640 Acres

BOTTOM HOLE LOCATION FOR DIRECTIONAL HOLE

SEC	35	TWP	2N	RGE	2W	COUNTY	Garvin
Spot Location	1/4	1/4	1/4	1/4	Feet From 1/4 Sec Lines	FSL	FWL
Measured Total Depth	70'04"	70'14"			BHL From Lease, Unit, or Property Line:		

BOTTOM HOLE LOCATION FOR HORIZONTAL HOLE: (LATERALS)

**LATERAL #1**

SEC	TWP	RGE	COUNTY
Spot Location			
1/4	1/4	1/4	1/4
Feet From 1/4 Sec Lines		FSL	FWL
Depth of Deviation	Radius of Turn	Direction	Total Length
Measured Total Depth		True Vertical Depth	BHL From Lease, Unit, or Property Line:

LATERAL #2

SEC	TWP	RGE	COUNTY
Spot Location			
1/4	1/4	1/4	1/4
Feet From 1/4 Sec Lines		FSL	FWL
Depth of Deviation	Radius of Turn	Direction	Total Length
Measured Total Depth	True Vertical Depth	BHL From Lease, Unit, or Property Line:	

LATERAL #3

SEC	TWP	RGE	COUNTY
Spot Location			
1/4	1/4	1/4	1/4
Depth of Deviation	Radius of Turn	Direction	FSL
Measured Total Depth	True Vertical Depth	FWL	
		BHL From Lease, Unit, or Property Line:	