

Oklahoma Corporation Commission
Oil & Gas Conservation Division
Post Office Box 52000
Oklahoma City, Oklahoma 73152-2000
Rule 165: 10-3-25

Form 1002A

API No.: 35151231460002

Completion Report

Spud Date: September 01, 2008

OTC Prod. Unit No.:

Drilling Finished Date: September 20, 2008

Amended

Amend Reason: TERMINATED DISPOSAL ORDER

1st Prod Date:

Completion Date: March 19, 2009

Recomplete Date: August 14, 2013

Drill Type: STRAIGHT HOLE

Well Name: DAISY 1-36 SWD

Purchaser/Measurer:

Location: WOODS 36 28N 18W
SW NE NE NE
375 FNL 500 FEL of 1/4 SEC
Derrick Elevation: 1831 Ground Elevation: 1816

First Sales Date:

Operator: CHESAPEAKE OPERATING LLC 17441
PO BOX 18496
6100 N WESTERN AVE
OKLAHOMA CITY, OK 73154-0496

Completion Type		Location Exception		Increased Density	
X	Single Zone	Order No		Order No	
	Multiple Zone	There are no Location Exception records to display.		There are no Increased Density records to display.	
	Commingled				

Casing and Cement							
Type	Size	Weight	Grade	Feet	PSI	SAX	Top of CMT
SURFACE	9 5/8	36	J-55	720		290	SURFACE
PRODUCTION	7	23	J-55	7050		285	3850

Liner								
Type	Size	Weight	Grade	Length	PSI	SAX	Top Depth	Bottom Depth
There are no Liner records to display.								

Total Depth: 8475

Packer		Plug	
Depth	Brand & Type	Depth	Plug Type
6864	BAKER FA-1	There are no Plug records to display.	

Initial Test Data										
Test Date	Formation	Oil BBL/Day	Oil-Gravity (API)	Gas MCF/Day	Gas-Oil Ratio Cu FT/BBL	Water BBL/Day	Pumpin or Flowing	Initial Shut-In Pressure	Choke Size	Flow Tubing Pressure
There are no Initial Data records to display.										

Completion and Test Data by Producing Formation

Formation Name: ARBUCKLE

Code: 169ABCK

Class: DRY

Spacing Orders

Order No	Unit Size
N/A	

Perforated Intervals

From	To
There are no Perf. Intervals records to display.	

Acid Volumes

There are no Acid Volume records to display.	
--	--

Fracture Treatments

There are no Fracture Treatments records to display.	
--	--

Formation	Top
ARBUCKLE	6975

Were open hole logs run? Yes

Date last log run: September 10, 2008

Were unusual drilling circumstances encountered? No

Explanation:

Other Remarks

OCC - THIS WELL IS AN OPEN HOLE COMPLETION FROM BOTTOM OF THE 7" CASING AT 7,050' TO TOTAL DEPTH AT 8,475'.

FOR COMMISSION USE ONLY

1138872

Status: Accepted

API NO. 151-23146
OTC PROD.
UNIT NO. N/A

PLEASE TYPE OR USE BLACK INK ONLY
NOTE:
Attach copy of original 1002A if recompletion or reentry.

OKLAHOMA CORPORATION COMMISSION
Oil & Gas Conservation Division
Post Office Box 52000
Oklahoma City, Oklahoma 73152-2000
Rule 165:10-3-25

RECEIVED

Form 1002A
Rev. 2009

FEB 16 2018

OKLAHOMA CORPORATION
COMMISSION

ORIGINAL
☒ AMENDED
Reason Amended Terminated disposal order

TYPE OF DRILLING OPERATION
☒ STRAIGHT HOLE ☐ DIRECTIONAL HOLE ☐ HORIZONTAL HOLE
☐ SERVICE WELL

If directional or horizontal, see reverse for bottom hole location.

COUNTY Woods SEC 36 TWP 28N RGE 18W
LEASE NAME Daisy WELL NO 1-36 SWD
SW 1/4 NE 1/4 NE 1/4 NE 1/4 375 1/4 SEC 500
ELEVATION Derrick Fl 1,831 Ground 1,816
FNL FEL OF 1/4 SEC 500
Latitude (if Known)

OPERATOR NAME CHESAPEAKE OPERATING, L.L.C.

OTC/OCC OPERATOR NO. 17441

ADDRESS P.O. BOX 18496

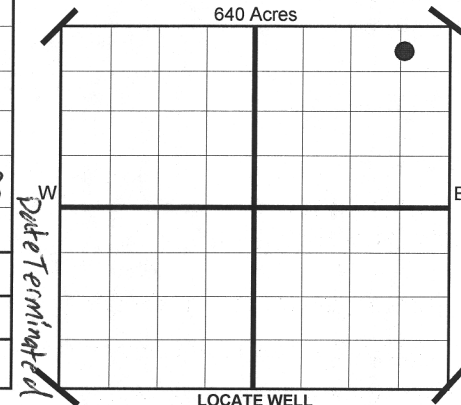
CITY OKLAHOMA CITY

STATE OK

ZIP 73154

COMPLETION REPORT

SPUD DATE 9/1/2008
DRLG FINISHED DATE 9/20/2008
DATE OF WELL COMPLETION 3/19/2009
1ST PROD DATE N/A
RECOMP DATE 8-14-2013
Longitude (if Known)



COMPLETION TYPE

☒ SINGLE ZONE
☐ MULTIPLE ZONE
Application Date
☐ COMMINGLED
Application Date
LOCATION EXCEPTION ORDER NO. N/A
INCREASED DENSITY ORDER NO. N/A

CASING & CEMENT (Form 1002C must be attached)

TYPE	SIZE	WEIGHT	GRADE	FEET	PSI	SAX	TOP
CONDUCTOR							
SURFACE	9-5/8"	36#	J-55	720		290	Surface
INTERMEDIATE							
PRODUCTION	7"	23#	J-55	7,050		285	3,850
LINER							

PACKER @ 6,864 BRAND & TYPE Baker FA-1
PACKER @ BRAND & TYPE

PLUG @ TYPE PLUG @ TYPE
PLUG @ TYPE PLUG @ TYPE

TOTAL DEPTH 8,475

COMPLETION & TEST DATA BY PRODUCING FORMATION

169 ABCK

FORMATION	Arbuckle						
SPACING & SPACING ORDER NUMBER	N/A						
CLASS: Oil, Gas, Dry, Inj. Disp, Comm Disp, Svc	Dry						
PERFORATED INTERVALS	Open Hole						
ACID/VOLUME							
FRACTURE TREATMENT (Fluids/Prop Amounts)							

Minimum Gas Allowable (165:10-17-7)

Gas Purchaser/Measurer

OR

1st Sales Date

INITIAL TEST DATA

Oil Allowable (165:10-13-3)

INITIAL TEST DATE							
OIL-BBL/DAY							
OIL-GRAVITY (API)							
GAS-MCF/DAY							
GAS-OIL RATIO CU FT/BBL							
WATER-BBL/DAY							
PUMPING OR FLOWING							
INITIAL SHUT-IN PRESSURE							
CHOKE SIZE							
FLOW TUBING PRESSURE							

AS SUBMITTED

A record of the formations drilled through, and pertinent remarks are presented on the reverse. I declare that I have knowledge of the contents of this report and am authorized by my organization to make this report, which was prepared by me or under my supervision and direction, with the data and facts stated herein to be true, correct, and complete to the best of my knowledge and belief.

Juanita Cooper
SIGNATURE JUANITA COOPER - SR. REGULATORY ANALYST 2/15/2018 405-848-8000
P.O. BOX 18496 OKLAHOMA CITY OK 73154
ADDRESS CITY STATE ZIP EMAIL ADDRESS juanita.cooper@chk.com

PLEASE TYPE OR USE BLACK INK ONLY
FORMATION RECORD

Give formation names and tops, if available, or descriptions and thickness of formations drilled through. Show intervals cored or drillstem tested.

LEASE NAME Daisy

WELL NO. 1-36 SWD

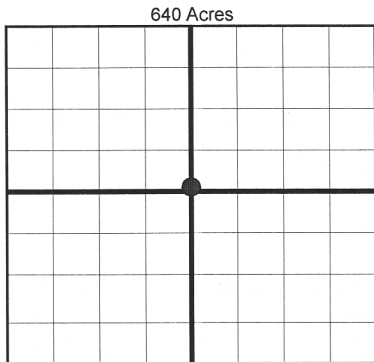
NAMES OF FORMATIONS	TOP
Arbuckle	6,975

FOR COMMISSION USE ONLY	
ITD on file <input type="checkbox"/> YES <input type="checkbox"/> NO	
APPROVED _____	DISAPPROVED _____
2) Reject Codes	

Were open hole logs run?	<u>X</u> yes	no
Date Last log was run	9/10/2008	
Was CO ₂ encountered?	yes	<u>X</u> no at what depths?
Was H ₂ S encountered?	yes	<u>X</u> no at what depths?
Were unusual drilling circumstances encountered?	yes	<u>X</u> no
If yes, briefly explain.		

Other remarks:

OCC - This well is an open hole completion from bottom of the 7" casing at 7050' to total depth at 8475'.

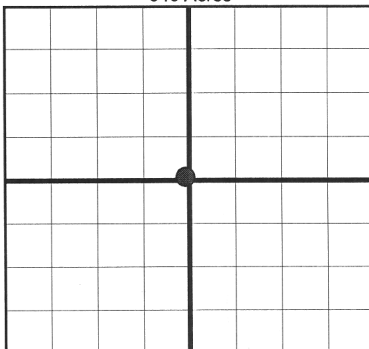


If more than three drainholes are proposed, attach a separate sheet indicating the necessary information.

Direction must be stated in degrees azimuth. Please note, the horizontal drainhole and its end point must be located within the boundaries of the lease or spacing unit.

Directional surveys are required for all drainholes and directional wells.

640 Acres



BOTTOM HOLE LOCATION FOR DIRECTIONAL HOLE

SEC	TWP	RGE	COUNTY
Spot Location		Feet From 1/4 Sec Lines	
1/4	1/4	1/4	1/4
Measured Total Depth		True Vertical Depth	BHL From Lease, Unit, or Property Line:

BOTTOM HOLE LOCATION FOR HORIZONTAL HOLE: (LATERALS)

SEC	TWP	RGE	COUNTY
Spot Location		Feet From 1/4 Sec Lines	
1/4	1/4	1/4	1/4
Depth of Deviation	Radius of Turn	Direction	Total Length
Measured Total Depth	True Vertical Depth	BHL From Lease, Unit, or Property Line:	

LATERAL #2

SEC	TWP	RGE	COUNTY
Spot Location		Feet From 1/4 Sec Lines	
1/4	1/4	1/4	1/4
Depth of Deviation	Radius of Turn	Direction	Total Length
Measured Total Depth	True Vertical Depth	BHL From Lease, Unit, or Property Line:	

LATERAL #3

SEC	TWP	RGE	COUNTY
Spot Location		Feet From 1/4 Sec Lines	
1/4	1/4	1/4	1/4
Depth of Deviation	Radius of Turn	Direction	Total Length
Measured Total Depth	True Vertical Depth	BHL From Lease, Unit, or Property Line:	