

Oklahoma Corporation Commission
Oil & Gas Conservation Division
Post Office Box 52000
Oklahoma City, Oklahoma 73152-2000
Rule 165: 10-3-25

Form 1002A

API No.: 35153236110000

Completion Report

Spud Date: September 20, 2017

OTC Prod. Unit No.: 153-22269

Drilling Finished Date: October 27, 2017

1st Prod Date: November 26, 2017

Completion Date: November 20, 2017

Drill Type: HORIZONTAL HOLE

Min Gas Allowable: Yes

Well Name: PATSY 13/12-20-17 1H

Purchaser/Measurer: ENLINK

Location: WOODWARD 24 20N 17W
N2 N2 NE NE
245 FNL 660 FEL of 1/4 SEC
Latitude: 36.20130526 Longitude: -98.95783412
Derrick Elevation: 1724 Ground Elevation: 1699

First Sales Date: 11/26/2017

Operator: TAPSTONE ENERGY LLC 23467

100 E MAIN ST
OKLAHOMA CITY, OK 73104-2509

Completion Type		Location Exception		Increased Density	
X	Single Zone	Order No		Order No	
	Multiple Zone	673573		There are no Increased Density records to display.	
	Commingled				

Casing and Cement							
Type	Size	Weight	Grade	Feet	PSI	SAX	Top of CMT
SURFACE	13 3/8	48	J-55	564	750	515	SURFACE
INTERMEDIATE	9 5/8	40	L-80	8556	2015	1030	2050
PRODUCTION	5 1/2	20	P-110	19602	2150	1800	7744

Liner								
Type	Size	Weight	Grade	Length	PSI	SAX	Top Depth	Bottom Depth
There are no Liner records to display.								

Total Depth: 19605

Packer		Plug	
Depth	Brand & Type	Depth	Plug Type
9299	AS1-X	There are no Plug records to display.	

Initial Test Data

Test Date	Formation	Oil BBL/Day	Oil-Gravity (API)	Gas MCF/Day	Gas-Oil Ratio Cu FT/BBL	Water BBL/Day	Pumpin or Flowing	Initial Shut-In Pressure	Choke Size	Flow Tubing Pressure
Feb 12, 2018	MISSISSIPPIAN (EX CHESTER)-MISSISSIPPIAN	497	37	3609	7261	1615	FLOWING		42	974

Completion and Test Data by Producing Formation

Formation Name: MISSISSIPPIAN (EX CHESTER)

Code: 359MSNLC

Class: OIL

Spacing Orders

Order No	Unit Size
672107	640
673697	MULTIUNIT

Perforated Intervals

From	To
9465	14524

Acid Volumes

67,662 GALLONS 15% HCL

Fracture Treatments

473,048 BARRELS, 20,285,635 POUNDS PROPPANT

Formation Name: MISSISSIPPIAN

Code: 359MSSP

Class: OIL

Spacing Orders

Order No	Unit Size
661944	640
673697	MULTIUNIT

Perforated Intervals

From	To
14524	19605

Acid Volumes

ACIDIZED WITH MISSISSIPPIAN (LESS CHESTER)

Fracture Treatments

FRAC'D WITH MISSISSIPPIAN (LESS CHESTER)

Formation Name: MISSISSIPPIAN (EX CHESTER)-MISSISSIPPIAN

Code:

Class: OIL

Formation	Top
BASE HEEBNER	5898
DOUGLAS SANDS	6198
TONKAWA	6318
COTTAGE GROVE	6774
HOGSHOOTER	7043
OSWEGO	7417
ATOKA	7857
CHESTER	8155
BASAL MANNING	9170
UPPER MERAMEC	9242

Were open hole logs run? No

Date last log run:

Was H2S Encountered? Yes

Depth Encountered: 9242

Were unusual drilling circumstances encountered? No

Explanation:

Other Remarks

Lateral Holes
Sec: 12 TWP: 20N RGE: 17W County: WOODWARD NW NE NE NE 196 FNL 660 FEL of 1/4 SEC Depth of Deviation: 8620 Radius of Turn: 927 Direction: 3 Total Length: 10058 Measured Total Depth: 19605 True Vertical Depth: 8991 End Pt. Location From Release, Unit or Property Line: 196

FOR COMMISSION USE ONLY
Status: Accepted
1138924

API NO. 3515323611
OTC PROD. UNIT NO. 15322269

PLEASE TYPE OR USE BLACK INK ONLY

NOTE:

Attach copy of original 1002A if recompletion or reentry.

OKLAHOMA CORPORATION COMMISSION

Oil & Gas Conservation Division

Post Office Box 52000

Oklahoma City, Oklahoma 73152-2000

Rule 165:10-3-25

COMPLETION REPORT

RECEIVED

FEB 26 2018

OKLAHOMA CORPORATION COMMISSION

640 Acres

☒ ORIGINAL
☐ AMENDED (Reason)

TYPE OF DRILLING OPERATION

☐ STRAIGHT HOLE ☐ DIRECTIONAL HOLE ☒ HORIZONTAL HOLE
☐ SERVICE WELL

If directional or horizontal, see reverse for bottom hole location.

COUNTY	WOODWARD	SEC	24	TWP	20N	RGE	17W
LEASE NAME	PATSY 13/12-20-17			WELL NO.	1H		
N2 1/4	N2 1/4	NE 1/4	NE 1/4	FNL OF 1/4 SEC	245'	FEL OF 1/4 SEC	660'
ELEVATION Derrick FL	1,724'	Ground	1,699'	Latitude (if known)	36.20130526		
Longitude (if known)				-98.95783412			
OPERATOR NAME	Tapstone Energy, LLC			OTC/OCC OPERATOR NO.	23467		
ADDRESS	PO BOX 1608						
CITY	Oklahoma City			STATE	OK	ZIP	73101-1608

W		E	
			X

LOCATE WELL

COMPLETION TYPE

<input checked="" type="checkbox"/> SINGLE ZONE
<input type="checkbox"/> MULTIPLE ZONE
Application Date
COMMINGLED
Application Date
LOCATION
EXCEPTION ORDER
INCREASED DENSITY
ORDER NO.

673573 (Interim)

CASING & CEMENT (Form 1002C must be attached)

TYPE	SIZE	WEIGHT	GRADE	FEET	PSI	SAX	TOP OF CMT
CONDUCTOR							
SURFACE	13 3/8	48	J-55	564'	750	515	SURFACE
INTERMEDIATE	9 5/8	40	L-80	8,556'	2,015	1,030	2,050' EST
PRODUCTION	5 1/2	20	P-110	19,602'	2,150	1,800	7,744' EST
LINER							
				TOTAL DEPTH	19,605'		

PACKER @ 9,299' BRAND & TYPE AS1-X

PLUG @ TYPE PLUG @ TYPE

TOTAL DEPTH 19,605'

PACKER @ BRAND & TYPE PLUG @ TYPE

PLUG @ TYPE PLUG @ TYPE

COMPLETION & TEST DATA BY PRODUCING FORMATION

FORMATION	MISSISSIPPIAN (Less Chester)	359MSNLC	359MSSP
SPACING & SPACING ORDER NUMBER	672107(640) 672107(661944) 673697(Multunit)	661944(640)	673697(Multunit)
CLASS: Oil, Gas, Dry, Inj, Disp, Comm Disp, Svc	OIL	Mississippian	Reported to Frac Focus
PERFORATED INTERVALS	14524 9,465' - 10,605'	oil	14524-19605
ACID/VOLUME	67,662 gal 15% HCl	Acidized with Mississippian (less Chester)	
FRACTURE TREATMENT (Fluids/Prop Amounts)	473,048 BBLS		
	20,285,635# PROPPANT	Frac'd with Mississippian (less Chester)	

INITIAL TEST DATA

INITIAL TEST DATE	2/12/2018
OIL-BBL/DAY	497
OIL-GRAVITY (API)	37
GAS-MCF/DAY	3609
GAS-OIL RATIO CU FT/BBL	7262
WATER-BBL/DAY	1615
PUMPING OR FLOWING	FLOWING
INITIAL SHUT-IN PRESSURE	
CHOKE SIZE	42
FLOW TUBING PRESSURE	974

AS SUBMITTED

A record of the formations drilled through, and pertinent remarks are presented on the reverse. I declare that I have knowledge of the contents of this report and am authorized by my organization to make this report, which was prepared by me or under my supervision and direction, with the data and facts stated herein to be true, correct, and complete to the best of my knowledge and belief.

SIGNATURE	Bryan Rother	DATE	2/21/2018	PHONE NUMBER	405-702-1600
PO BOX 1608	Oklahoma City	OK	73101-1608	REGULATORY@TAPSTONEENERGY.COM	
ADDRESS	CITY	STATE	ZIP	EMAIL ADDRESS	

Give formation names and tops, if available, or descriptions and thickness of formations drilled through. Show intervals cored or drillstem tested.

WELL NO. 1H

SEC	TWP	RGE	COUNTY			
Spot Location						
1/4	1/4	1/4	1/4	Feet From 1/4 Sec Lines	FSL	FWL
Depth of Deviation		Radius of Turn		Direction	Total Length	
Measured Total Depth		True Vertical Depth		BHL From Lease, Unit, or Property Line:		

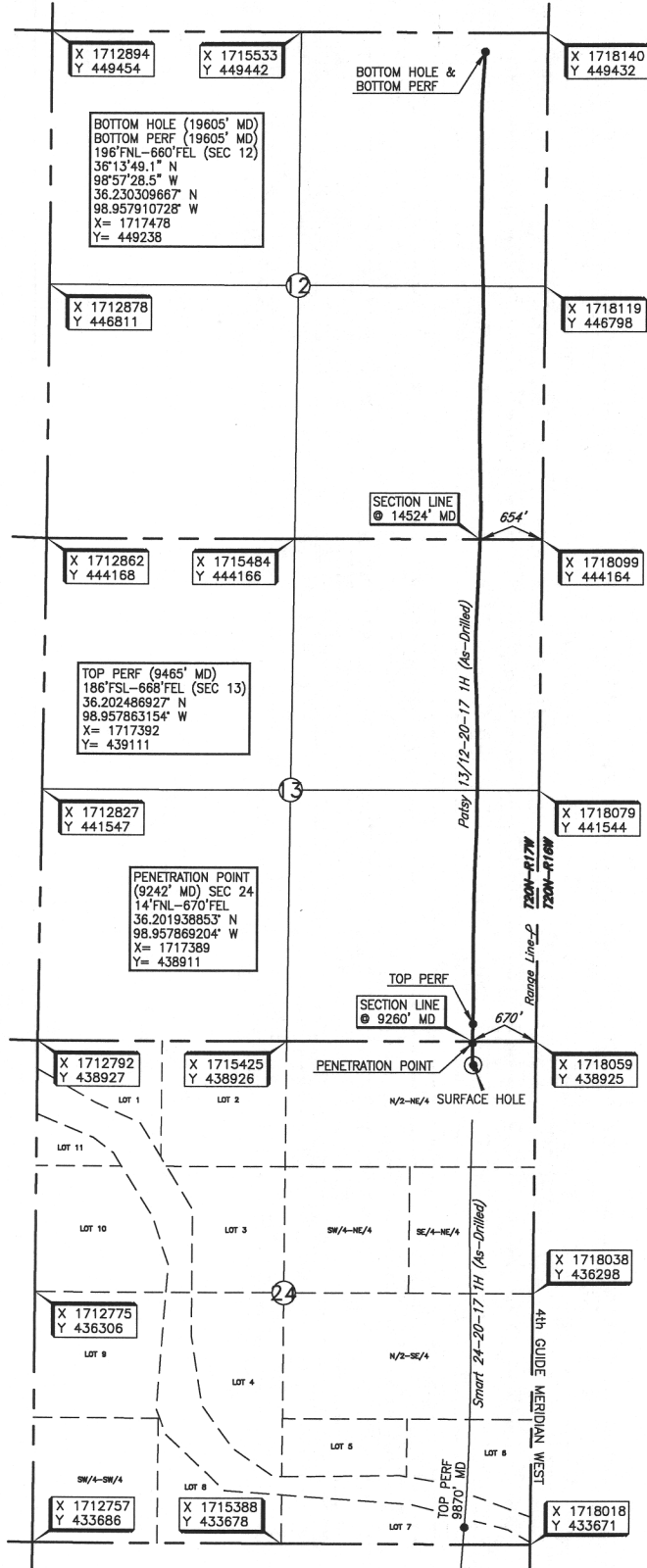
WOODWARD County, Oklahoma
 245° FNL-660° FEL Section 24 Township 20N Range 17W I.M.



Operator: TAPSTONE ENERGY
 Lease Name: PATSY 13/12-20-17
 Topography & Vegetation Loc. fell in sandy grass pasture
 Well No.: 1H
 ELEVATION: 1699' Gr. at Stake

Good Drill Site? Yes
 Best Accessibility to Location From North off lease road
 Distance & Direction from Hwy Jct or Town From Richmond, Oklahoma, go ± 0.4 mile East, ± 3 miles North, ± 5 miles East, then ± 2 miles South to the Northeast Corner of Section 24, T20N-R17W.

Reference Stakes or Alternate Location
 Stakes Set None




DATUM: NAD-27
 LAT: 36°12'04.7" N
 LONG: 98°57'28.2" W
 LAT: 36.201305261° N
 LONG: 98.957834124° W
 STATE PLANE COORDINATES (US FEET):
 ZONE: OK NORTH
 X: 1717397
 Y: 438680

284360 Date of Drawing: Nov. 17, 2017
 Invoice # 280030 Date Staked: Aug. 15, 2017 JP

FINAL AS-DRILLED PLAT

AS-DRILLED INFORMATION
 FURNISHED BY TAPSTONE ENERGY

 SIGNATURE		Ryan Koontz NAME (PRINT OR TYPE)		8/28/2018 DATE	405-702-1600 PHONE NUMBER
PO BOX 1608 ADDRESS		Oklahoma City CITY	OK 73101-1608 STATE ZIP	REGULATORY@TAPSTONEENERGY.COM EMAIL ADDRESS	

Give formation names and tops, if available, or descriptions and thickness of formations drilled through. Show intervals cored or drillstem tested.

FOR COMMISSION USE ONLY	
ITD on file	<input type="checkbox"/> YES <input type="checkbox"/> NO
APPROVED	DISAPPROVED
2) Reject Codes	
<hr/>	
<hr/>	
<hr/>	
<hr/>	
<hr/>	

Were open hole logs run? ___ yes X no

Date Last log was run _____

were CO₂ encountered? ___ yes X no at what depths? _____

were H₂S encountered? X yes ___ no at what depths? 9242'

Were unusual drilling circumstances encountered? ___ yes X no
If yes, briefly explain below

Other remarks:

640 Acres

A blank coordinate grid with x and y axes. The grid is 10 units wide and 10 units high. The x-axis is labeled 'x' at the top right, and the y-axis is labeled 'y' at the top left. The grid is divided into four quadrants by a horizontal line and a vertical line. The origin (0,0) is at the center of the grid.

If more than three drainholes are proposed, attach a separate sheet indicating the necessary information.

Direction must be stated in degrees azimuth.
Please note, the horizontal drainhole and its end point must be located within the boundaries of the lease or spacing unit.

Directional surveys are required for all drainholes and directional wells.

640 Acres

A blank 10x10 grid with a bold cross dividing it into four 5x5 quadrants.

BOTTOM HOLE LOCATION FOR DIRECTIONAL HOLE

SEC	TWP	RGE	COUNTY		
Spot Location					
1/4	1/4	1/4	1/4	Feet From 1/4 Sec Lines	FNL
Measured Total Depth		True Vertical Depth		BHL From Lease, Unit, or Property Line:	

BOTTOM HOLE LOCATION FOR HORIZONTAL HOLE: (LATERALS)

LATERAL #1

SEC 12	TWP 20N	RGE 17W	COUNTY	WOODWARD			
Spot Location				Feet From 1/4 Sec Lines		FNL 196'	FEL 660'
NW 1/4	NE 1/4	NE 1/4	NE 1/4				
Depth of Deviation 8,620		Radius of Turn 927		Direction 3.46		Total Length 10,058	
Measured Total Depth 19,605'		True Vertical Depth 8,991'		BHL From Lease, Unit, or Property Line: 196'			

LATERAL #2

SEC	TWP	RGE	COUNTY			
Spot Location				Feet From 1/4 Sec Lines	FSL	FWL
1/4	1/4	1/4	1/4			
Depth of Deviation		Radius of Turn	Direction	Total Length		
Measured Total Depth		True Vertical Depth	BHL From Lease, Unit, or Property Line:			

LATERAL #3

SEC	TWP	RGE	COUNTY			
Spot Location				Feet From 1/4 Sec Lines	FSL	FWL
1/4	1/4	1/4	1/4			
Depth of Deviation		Radius of Turn	Direction	Total Length		
Measured Total Depth		True Vertical Depth	BHL From Lease, Unit, or Property Line:			