

Oklahoma Corporation Commission
Oil & Gas Conservation Division
Post Office Box 52000
Oklahoma City, Oklahoma 73152-2000
Rule 165: 10-3-25

Form 1002A

API No.: 35049251540000

Completion Report

Spud Date: September 19, 2017

OTC Prod. Unit No.: 049-223772

Drilling Finished Date: November 13, 2017

1st Prod Date: July 09, 2018

Completion Date: July 09, 2018

Drill Type: HORIZONTAL HOLE

Min Gas Allowable: Yes

Well Name: COTTON 1-17-16XH

Purchaser/Measurer: ENABLE

Location: GARVIN 17 1N 1W
SW SW NW SE
1532 FSL 130 FWL of 1/4 SEC
Derrick Elevation: 998 Ground Elevation: 975

First Sales Date: 07/09/2018

Operator: TRIAD ENERGY INC 10399

6 NE 63RD ST STE 220
OKLAHOMA CITY, OK 73105-1401

Completion Type	
X	Single Zone
	Multiple Zone
	Commingled

Location Exception	
Order No	
683941	

Increased Density	
Order No	
There are no Increased Density records to display.	

Casing and Cement							
Type	Size	Weight	Grade	Feet	PSI	SAX	Top of CMT
CONDUCTOR	20			80			SURFACE
SURFACE	13 3/8	54.5	J-55	1499		825	SURFACE
INTERMEDIATE	9 5/8	40	P-110HC	11856		990	5000
PRODUCTION	5 1/2	23	P-110HC	19447		1745	10850

Liner								
Type	Size	Weight	Grade	Length	PSI	SAX	Top Depth	Bottom Depth
There are no Liner records to display.								

Total Depth: 19477

Packer	
Depth	Brand & Type
12675	ASI-X

Plug	
Depth	Plug Type
There are no Plug records to display.	

Initial Test Data

Test Date	Formation	Oil BBL/Day	Oil-Gravity (API)	Gas MCF/Day	Gas-Oil Ratio Cu FT/BBL	Water BBL/Day	Pumpin or Flowing	Initial Shut-In Pressure	Choke Size	Flow Tubing Pressure
Jul 10, 2018	WOODFORD	240	40	247	1029	963	FLOWING		30/64	

Completion and Test Data by Producing Formation

Formation Name: WOODFORD

Code: 319WDFD

Class: OIL

Spacing Orders

Order No	Unit Size
169883	640
172043	NPT
672276	MULTIUNIT

Perforated Intervals

From	To
12877	19372

Acid Volumes

3,024 BARRELS 15% AND HF

Fracture Treatments

357,057 BARRELS, 12,328,969 POUNDS

Formation	Top
SPRINGER SHALE	7315
CANEY	12500
SYCAMORE	12594
WOODFORD	12864

Were open hole logs run? No

Date last log run:

Were unusual drilling circumstances encountered? No

Explanation:

Other Remarks

OCC - THIS DOCUMENT IS ACCEPTED BASED ON THE DATA SUBMITTED THE FINAL MULTIUNIT ORDER HAS NOT BEEN ISSUED.

Lateral Holes

Sec: 16 TWP: 1N RGE: 1W County: GARVIN

NW SE SW SE

455 FSL 1705 FEL of 1/4 SEC

Depth of Deviation: 12460 Radius of Turn: 660 Direction: 91 Total Length: 6700

Measured Total Depth: 19477 True Vertical Depth: 13297 End Pt. Location From Release, Unit or Property Line: 455

FOR COMMISSION USE ONLY

Status: Accepted

1140930

API NO. 3504925154
OTC PROD. UNIT NO. 049-223772

(PLEASE TYPE OR USE BLACK INK ONLY)

OKLAHOMA CORPORATION COMMISSION

Oil & Gas Conservation Division

Post Office Box 52000

Oklahoma City, Oklahoma 73152-2000

Rule 165:10-3-25

COMPLETION REPORT

RECEIVED

OCT 24 2018

OKLAHOMA CORPORATION COMMISSION

Form 1002A

Rev. 2009

☒ ORIGINAL
☐ AMENDED (Reason)

TYPE OF DRILLING OPERATION

☐ STRAIGHT HOLE ☐ DIRECTIONAL HOLE ☒ HORIZONTAL HOLE
☐ SERVICE WELL

If directional or horizontal, see reverse for bottom hole location.

COUNTY Garvin SEC 17 TWP 1N RGE 1W
LEASE NAME Cotton WELL NO. 1-17-16XH
SW 1/4 SW 1/4 NW 1/4 SE 1/4 FSL OF 1/4 SEC 1532 FWL OF 1/4 SEC 130
ELEVATION Derrick FL 998 Ground 975 Latitude (if known) Longitude (if known)
OPERATOR NAME Triad Energy, Inc. OTC/OCC OPERATOR NO. 10399
ADDRESS 6 NE 63rd St Ste 220
CITY Oklahoma City STATE OK ZIP 73105

SPUD DATE 9/19/2017
DRLG FINISHED DATE 11/13/2017
DATE OF WELL COMPLETION 7/9/2018
1st PROD DATE 7/9/2018
RECOMP DATE

640 Acres
W E
LOCATE WELL

COMPLETION TYPE

☒ SINGLE ZONE
☐ MULTIPLE ZONE
Application Date
☐ COMMINGLED
Application Date
LOCATION EXCEPTION ORDER NO. 683941 F.O.
INCREASED DENSITY ORDER NO.

CASING & CEMENT (Form 1002C must be attached)

TYPE	SIZE	WEIGHT	GRADE	FEET	PSI	SAX	TOP OF CMT
CONDUCTOR	20"			80			surface
SURFACE	13 3/8	54.5	J-55	1499		825	surface
INTERMEDIATE	9 5/8	40	P-110 HC	11,856		990	5000'
PRODUCTION	5 1/2	23	P-110 HC	19,447		1745	10850'
LINER							
				TOTAL DEPTH	19,477		

PACKER @ 12,675 BRAND & TYPE ASI-X
PACKER @ BRAND & TYPE

PLUG @ TYPE PLUG @ TYPE
PLUG @ TYPE PLUG @ TYPE

COMPLETION & TEST DATA BY PRODUCING FORMATION

FORMATION Woodford
SPACING & SPACING ORDER NUMBER 640 ac 172043,169883
CLASS: Oil, Gas, Dry, Inj, Disp, Comm Disp, Svc Oil NPT
PERFORATED INTERVALS 12877' to 19372'
ACID/VOLUME 15% & HF, 3024 bbls
FRACTURE TREATMENT (Fluids/Prop Amounts) 357057 bbls 12,328,969 lb
319WDED
672276 IO, Multifract
Reported to Frac Focus

☒ Min Gas Allowable (165:10-17-7)
OR
☐ Oil Allowable (165:10-13-3)

Gas Purchaser/Measurer Enable
First Sales Date 7/9/2018

INITIAL TEST DATA

INITIAL TEST DATE 7/10/2018
OIL-BBL/DAY 240
OIL-GRAVITY (API) 40
GAS-MCF/DAY 247
GAS-OIL RATIO CU FT/BBL 1029
WATER-BBL/DAY 963
PUMPING OR FLOWING Flowing
INITIAL SHUT-IN PRESSURE
CHOKE SIZE 30/64
FLOW TUBING PRESSURE
AS SUBMITTED

A record of the formations drilled through, and pertinent remarks are presented on the reverse. I declare that I have knowledge of the contents of this report and am authorized by my organization to make this report, which was prepared by me or under my supervision and direction, with the data and facts stated herein to be true, correct, and complete to the best of my knowledge and belief.

SIGNATURE Mike McDonald 10/23/2018 (405) 842-4312
NAME (PRINT OR TYPE) DATE PHONE NUMBER
6 NE 63rd St Ste 220 OK OK 73105
ADDRESS CITY STATE ZIP
mikemcdonald@triadenergy.com
EMAIL ADDRESS

Give formation names and tops, if available, or descriptions and thickness of formations drilled through. Show intervals cored or drillstem tested.

NAMES OF FORMATIONS	TOP
Springer Shale	7315'
Caney	12500'
Sycamore	12594'
Woodford	12864'

Other remarks:	

A blank 10x10 grid with a bold cross dividing it into four 5x5 quadrants. A small 'x' is located in the bottom-right quadrant.

A blank 10x10 grid with a bold cross dividing it into four 5x5 quadrants.

SEC	16	TWP	1N	RGE	1W	COUNTY	Garvin
Spot Location		1/4		1/4		Feet From 1/4 Sec Lines	FSL
Measured Total Depth		1/4		1/4		FWL	
		True Vertical Depth		BHL From Lease, Unit, or Property Line:			

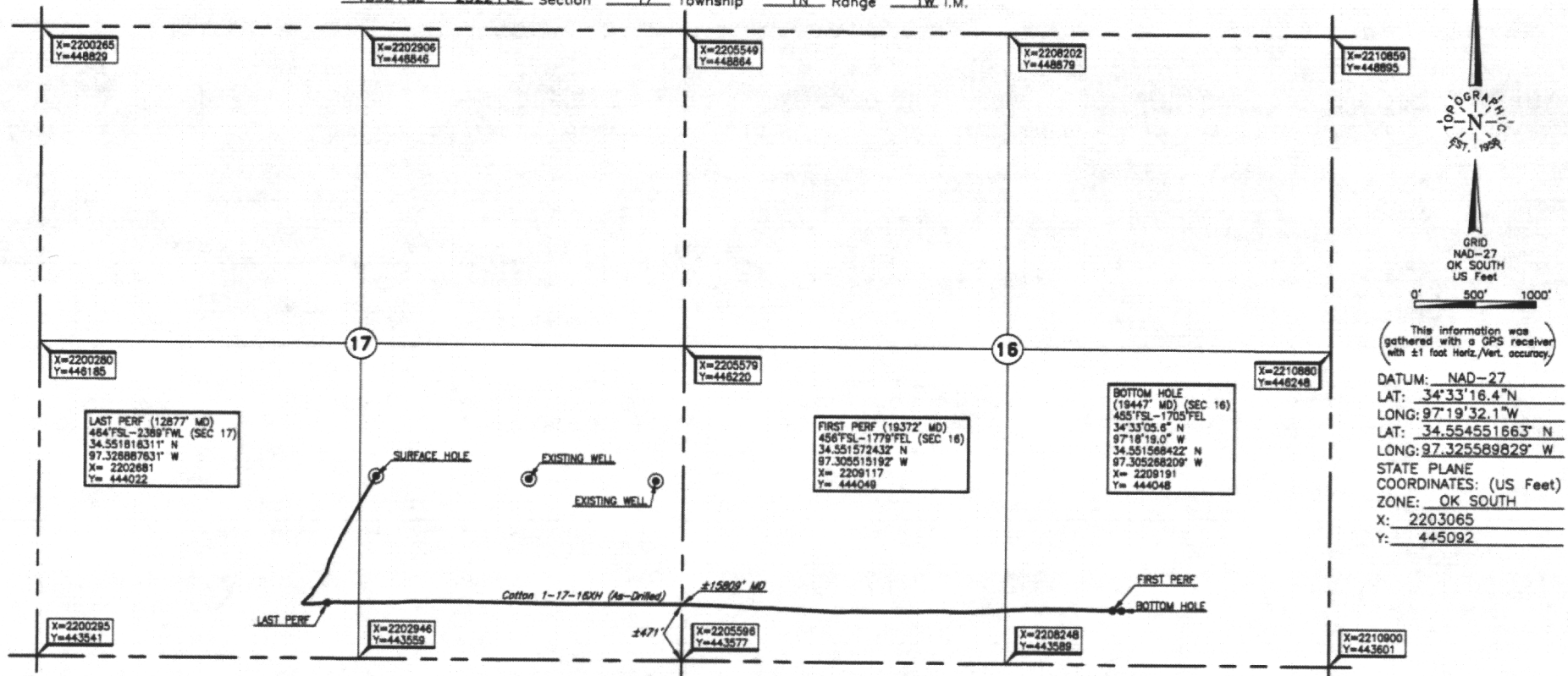
LATERAL #1										As Drilled 11/10/11									
SEC 16		TWP 1N		RGE 1W		COUNTY Garvin										1705 FEET			
Spot Location NW 1/4 SE 1/4 SW 1/4 SE 1/4										Feet From 1/4 Sec Lines					FSL 455		EWL 935		
Depth of Deviation 12,460				Radius of Turn 660				Direction 91 90				Total Length 6700'							
Measured Total Depth 19,477				True Vertical Depth 13,297				BHL From Lease, Unit, or Property Line: 455											

SEC	TWP	RGE	COUNTY			
Spot Location						
1/4	1/4	1/4	1/4	Feet From 1/4 Sec Lines	FSL	FWL
Depth of Deviation		Radius of Turn		Direction	Total Length	
Measured Total Depth		True Vertical Depth		BHL From Lease, Unit, or Property Line:		

SEC	TWP	RGE	COUNTY			
Spot Location						
1/4	1/4	1/4	1/4	Feet From 1/4 Sec Lines	FSL	FWL
Depth of Deviation		Radius of Turn		Direction	Total Length	
Measured Total Depth		True Vertical Depth		BHL From Lease, Unit, or Property Line:		

TOPOGRAPHIC LAND SURVEYORS OF OKLAHOMA
13800 WIRELESS WAY, OKLA. CITY, OKLA. 73134 • LOCAL (405) 843-4847 • OUT OF STATE (800) 654-3219
Certificate of Authorization No. 1293 LS

GARVIN County, Oklahoma
1532' FSL - 2522' FEL Section 17 Township 1N Range 1W I.M.



Operator: TRIAD ENERGY, INC.
Lease Name: COTTON Well No.: 1-17-16XH
Topography & Vegetation: Loc. fell in natural grass pasture with scattered trees, ±180' North of SW-NE power line.
±185' North of SW-NE pipeline
Good Drill Site? Yes Reference Stakes or Alternate Location: Stakes Set None
Best Accessibility to Location: From East off lease road
Distance & Direction: ±185' North of SW-NE pipeline
from Hwy Jct or Town: From Rate, OK, go ±1.0 mi. South, then ±2.0 mi. East, then ±0.7 mi. South to existing lease road in the SE/4 of Sec. 17-T1N-R1W

297607 Date Drawn: June 26, 2018
Invoice # 280033 Date Staked: Aug. 15, 2017 JP

FINAL AS-DRILLED PLAT

AS-DRILLED INFORMATION
FURNISHED BY TRIAD ENERGY, INC.