

Oklahoma Corporation Commission
Oil & Gas Conservation Division
Post Office Box 52000
Oklahoma City, Oklahoma 73152-2000
Rule 165: 10-3-25

Form 1002A

API No.: 35031025130001

Completion Report

Spud Date: December 06, 1955

OTC Prod. Unit No.:

Drilling Finished Date: December 07, 1955

Amended

1st Prod Date: December 09, 1955

Amend Reason: TEMPORARILY ABANDONED / CORRECT FOOTAGE / SPOT CALL

Completion Date: December 10, 1955

Recomplete Date: September 05, 2018

Drill Type: STRAIGHT HOLE

Well Name: KECK 9

Purchaser/Measurer:

Location: COMANCHE 29 3N 10W
NE NW NE NW
2375 FSL 1815 FWL of 1/4 SEC
Derrick Elevation: 0 Ground Elevation: 0

First Sales Date:

Operator: WAGON WHEEL PRODUCTION COMPANY 21308

8167 N 1815 RD
CRAWFORD, OK 73638-9502

Completion Type		Location Exception		Increased Density	
X	Single Zone	Order No		Order No	
	Multiple Zone	There are no Location Exception records to display.		There are no Increased Density records to display.	
	Commingled				

Casing and Cement							
Type	Size	Weight	Grade	Feet	PSI	SAX	Top of CMT
PRODUCTION	4 1/2	14	J-55	770		50	

Liner								
Type	Size	Weight	Grade	Length	PSI	SAX	Top Depth	Bottom Depth
There are no Liner records to display.								

Total Depth: 819

Packer		Plug	
Depth	Brand & Type	Depth	Plug Type
There are no Packer records to display.		There are no Plug records to display.	

Initial Test Data										
Test Date	Formation	Oil BBL/Day	Oil-Gravity (API)	Gas MCF/Day	Gas-Oil Ratio Cu FT/BBL	Water BBL/Day	Pumpin or Flowing	Initial Shut-In Pressure	Choke Size	Flow Tubing Pressure
There are no Initial Data records to display.										
Completion and Test Data by Producing Formation										

Formation Name: SAND		Code: 000SAND	Class: TA
Spacing Orders		Perforated Intervals	
Order No	Unit Size	From	To
There are no Spacing Order records to display.		728	754
Acid Volumes		Fracture Treatments	
There are no Acid Volume records to display.		There are no Fracture Treatments records to display.	

Formation	Top
SHALE SANDY SHALE	0
WATER SAND	386
SHALE	431
WATER SAND	461
SHALE AND SANDY SHALE	481
SHALEY SAND	614
SHALE AND SANDY SHALE	628
SAND PROBABLE OIL	727
SHALE	745
SAND PROBABLE OIL	751
SHALE	758
SAND	789

Were open hole logs run? No
Date last log run:

Were unusual drilling circumstances encountered? No
Explanation:

Other Remarks
There are no Other Remarks.

FOR COMMISSION USE ONLY	
Status: Accepted	1140773

RECEIVED

Form 1002A
Rev. 2009

SEP 06 2018

OKLAHOMA CORPORATION COMMISSION

API NO. 031-02513
OTC PROD.
UNIT NO.

(PLEASE TYPE OR USE BLACK INK ONLY)

OKLAHOMA CORPORATION COMMISSION

Oil & Gas Conservation Division

Post Office Box 52000

Oklahoma City, Oklahoma 73152-2000

Rule 165:10-3-25

COMPLETION REPORT

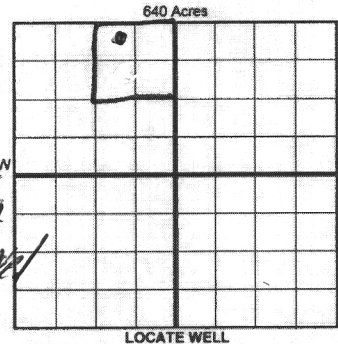
☐ ORIGINAL
☒ AMENDED (Reason)

TYPE OF DRILLING OPERATION

☒ STRAIGHT HOLE ☐ DIRECTIONAL HOLE ☐ HORIZONTAL HOLE
☐ SERVICE WELL

If directional or horizontal, see reverse for bottom hole location.

COUNTY Cornache SEC 29 TWP 3N RGE 10W
LEASE NAME Reck WELL NO. 9
NE 1/4 NW 1/4 NE 1/4 NW 1/4 FSL OF 1/4 SEC 2375 FWL OF 1/4 SEC 1815
ELEVATION Ground Latitude (if known) Longitude (if known)
OPERATOR NAME Wagon Wheel Production Co. OTC/OCC OPERATOR NO. 21308
ADDRESS 8167 North 1815 Road
CITY Crawford STATE OK ZIP 73638



COMPLETION TYPE

☒ SINGLE ZONE
☐ MULTIPLE ZONE
Application Date
☐ COMMINGLED
Application Date
LOCATION EXCEPTION
ORDER NO.
INCREASED DENSITY
ORDER NO.

CASING & CEMENT (Form 1002C must be attached)

TYPE	SIZE	WEIGHT	GRADE	FEET	PSI	SAX	TOP OF CMT
CONDUCTOR							
SURFACE							
INTERMEDIATE							
PRODUCTION	<u>4 1/2</u>	<u>14</u>	<u>J55</u>	<u>770</u>		<u>50</u>	
LINER							

PACKER @ _____ BRAND & TYPE _____ PLUG @ _____ TYPE _____ PLUG @ _____ TYPE _____
PACKER @ _____ BRAND & TYPE _____ PLUG @ _____ TYPE _____ PLUG @ _____ TYPE _____

TOTAL DEPTH 770
819

COMPLETION & TEST DATA BY PRODUCING FORMATION

FORMATION	<u>Dirt sand</u>						
SPACING & SPACING ORDER NUMBER							
CLASS: Oil, Gas, Dry, Inj, Disp, Comm Disp, Svc	<u>Dirt TA</u>						
PERFORATED INTERVALS	<u>748 - 754</u> <u>728 1/4 - 740 1/4</u>						
ACID/VOLUME							
FRACTURE TREATMENT (Fluids/Prop Amounts)							

Min Gas Allowable (165:10-17-7)

Gas Purchaser/Measurer

☐ OR

First Sales Date

INITIAL TEST DATA

INITIAL TEST DATE							
OIL-BBL/DAY	<u>80</u>						
OIL-GRAVITY (API)	<u>30</u>						
GAS-MCF/DAY							
GAS-OIL RATIO CU FT/BBL							
WATER-BBL/DAY							
PUMPING OR FLOWING	<u>Flowing</u>						
INITIAL SHUT-IN PRESSURE							
CHOKE SIZE							
FLOW TUBING PRESSURE							

RECEIVED

SEP 06 2018

OKLAHOMA CORPORATION COMMISSION
DUNCAN OFFICE

AS SUBMITTED

A record of the formations drilled through, and pertinent remarks are presented on the reverse. I declare that I have knowledge of the contents of this report and am authorized by my organization to make this report, which was prepared by me or under my supervision and direction, with the data and facts stated herein to be true, correct, and complete to the best of my knowledge and belief.

SIGNATURE Jackie Castle NAME (PRINT OR TYPE) Jackie Castle
ADDRESS 8167 North 1815 Rd. CITY Crawford STATE OK ZIP 73638
DATE 8-17-18 PHONE NUMBER 580-983-2371
EMAIL ADDRESS

PLEASE TYPE OR USE BLACK INK ONLY
FORMATION RECORD

Give formation names and tops, if available, or descriptions and thickness of formations drilled through. Show intervals cored or drillstem tested.

NAMES OF FORMATIONS	TOP
Sh sdy sh	0
Wtr sd	386
Sh	431
Wtr sd	461
Sh & sdy sh	481
Shly sd	614
Sh & sdy sh	628
Sd probable oil	727
Shale	745
Sd probable oil	751
Shale	758
Sand	789

LEASE NAME Leck WELL NO. 9

FOR COMMISSION USE ONLY		
ITD on file	<input type="checkbox"/> YES	<input type="checkbox"/> NO
APPROVED	DISAPPROVED	2) Reject Codes
<div style="border-bottom: 1px solid black; height: 15px; width: 100%;"></div> <div style="border-bottom: 1px solid black; height: 15px; width: 100%;"></div> <div style="border-bottom: 1px solid black; height: 15px; width: 100%;"></div> <div style="border-bottom: 1px solid black; height: 15px; width: 100%;"></div>		

Were open hole logs run?	<input type="checkbox"/> yes	<input type="checkbox"/> no
Date last log was run		
Was CO ₂ encountered?	<input type="checkbox"/> yes	<input type="checkbox"/> no at what depths?
Was H ₂ S encountered?	<input type="checkbox"/> yes	<input type="checkbox"/> no at what depths?
Were unusual drilling circumstances encountered?	<input type="checkbox"/> yes <input type="checkbox"/> no	
If yes, briefly explain below		

Other remarks:

640 Acres

If more than three drainholes are proposed, attach a separate sheet indicating the necessary information.

Direction must be stated in degrees azimuth.
Please note, the horizontal drainhole and its end point must be located within the boundaries of the lease or spacing unit.

Directional surveys are required for all drainholes and directional wells.

640 Acres

BOTTOM HOLE LOCATION FOR DIRECTIONAL HOLE

SEC	TWP	RGE	COUNTY
Spot Location			
1/4	1/4	1/4	1/4
Measured Total Depth		True Vertical Depth	BHL From Lease, Unit, or Property Line:

BOTTOM HOLE LOCATION FOR HORIZONTAL HOLE: (LATERALS)

SEC	TWP	RGE	COUNTY
Spot Location			
1/4	1/4	1/4	1/4
Depth of Deviation		Radius of Turn	Direction
Measured Total Depth		True Vertical Depth	BHL From Lease, Unit, or Property Line:

RECEIVED
SEP 26 2018
OKLAHOMA
CORPORATION COMMISSION
DULCAN OFFICE

LATERAL #2

SEC	TWP	RGE	COUNTY
Spot Location			
1/4	1/4	1/4	1/4
Depth of Deviation		Radius of Turn	Direction
Measured Total Depth		True Vertical Depth	BHL From Lease, Unit, or Property Line:

LATERAL #3

SEC	TWP	RGE	COUNTY
Spot Location			
1/4	1/4	1/4	1/4
Depth of Deviation		Radius of Turn	Direction
Measured Total Depth		True Vertical Depth	BHL From Lease, Unit, or Property Line: