

Oklahoma Corporation Commission
Oil & Gas Conservation Division
Post Office Box 52000
Oklahoma City, Oklahoma 73152-2000
Rule 165: 10-3-25

Form 1002A

API No.: 35007355980002

Completion Report

Spud Date: September 25, 1962

OTC Prod. Unit No.:

Drilling Finished Date: October 18, 1962

Amended

1st Prod Date: January 01, 1963

Amend Reason: RECOMPLETE

Completion Date: January 15, 1963

Recomplete Date: April 18, 2018

Drill Type: STRAIGHT HOLE

Well Name: BEARD STATE 1-6

Purchaser/Measurer: N/A

Location: BEAVER 6 5N 23E CM
E2 W2 SW NE
660 FSL 560 FWL of 1/4 SEC
Derrick Elevation: 2581 Ground Elevation: 2571

First Sales Date: N/A

Operator: TEX-OK ENERGY LP 18105
PO BOX 3010
1501 STAMPEDE AVE STE 3200
CODY, WY 82414-5915

Completion Type		Location Exception		Increased Density	
X	Single Zone	Order No		Order No	
	Multiple Zone	There are no Location Exception records to display.		There are no Increased Density records to display.	
	Commingled				

Casing and Cement							
Type	Size	Weight	Grade	Feet	PSI	SAX	Top of CMT
SURFACE	8 5/8			1315		625	SURFACE
PRODUCTION	4 1/2	9.5	J-55	6700		200	6180

Liner								
Type	Size	Weight	Grade	Length	PSI	SAX	Top Depth	Bottom Depth
There are no Liner records to display.								

Total Depth: 6716

Packer	
Depth	Brand & Type
There are no Packer records to display.	

Plug	
Depth	Plug Type
3150	CIBP
5450	CIBP
6250	CIBP
6400	CIBP

Initial Test Data

Test Date	Formation	Oil BBL/Day	Oil-Gravity (API)	Gas MCF/Day	Gas-Oil Ratio Cu FT/BBL	Water BBL/Day	Pumpin or Flowing	Initial Shut-In Pressure	Choke Size	Flow Tubing Pressure
Mar 01, 1978	CHESTER			225			FLOWING			
Jan 16, 1980	MORROW	1	60	394		15	FLOWING			
Feb 27, 2018	MORROW									
Mar 08, 2018	MARMATON									
Apr 12, 2018	COUNCIL GROVE									

Completion and Test Data by Producing Formation

Formation Name: CHESTER

Code: 354CSTR

Class: DRY

Spacing Orders

Order No

Unit Size

There are no Spacing Order records to display.

Perforated Intervals

From

To

6586

6652

Acid Volumes

There are no Acid Volume records to display.

Fracture Treatments

There are no Fracture Treatments records to display.

Formation Name: MORROW

Code: 402MRRW

Class: DRY

Spacing Orders

Order No

Unit Size

46824

640

Perforated Intervals

From

To

6432

6446

Acid Volumes

There are no Acid Volume records to display.

Fracture Treatments

There are no Fracture Treatments records to display.

Formation Name: MORROW

Code: 402MRRW

Class: DRY

Spacing Orders

Order No

Unit Size

46824

640

Perforated Intervals

From

To

6366

6380

Acid Volumes

There are no Acid Volume records to display.

Fracture Treatments

There are no Fracture Treatments records to display.

Formation Name: MARMATON

Code: 404MRMN

Class: DRY

Spacing Orders

Order No

Unit Size

UNSPACED

Perforated Intervals

From

To

5470

5598

Acid Volumes

There are no Acid Volume records to display.

Fracture Treatments

There are no Fracture Treatments records to display.

Formation Name: COUNCIL GROVE

Code: 451CCGV

Class: DRY

Spacing Orders

Order No	Unit Size
37505	640

Perforated Intervals

From	To
3213	3221

Acid Volumes

There are no Acid Volume records to display.

Fracture Treatments

There are no Fracture Treatments records to display.

Formation	Top
CHASE	2962
COUNCIL GROVE	3006
LANSING, KANSAS CITY	4655
CHECKERBOARD	5356
MARMATON	5464

Were open hole logs run? No

Date last log run: December 27, 2017

Were unusual drilling circumstances encountered? No

Explanation:

Other Remarks

TOP OF CEMENT @ 6,180'. MARMATON AND COUNCIL GROVE HAD SQUEEZE HOLES PERFORATED @ 5,615', 5,575', 5,498', 5,445' AND 3,200', 3,240' WITH A CEMENT SQUEEZE THROUGHOUT THESE ZONES. OCC - OPERATOR NOT PERMITTED TO TEST COUNCIL GROVE, BUT SINCE IT WAS DRY AND THE WELL WAS PLUGGED MAY 22, 2018, THE OPERATOR WAS WARNED.

FOR COMMISSION USE ONLY

1139900

Status: Accepted

API NO. 3500735598
OTC PROD. UNIT NO. 007-030061

PLEASE TYPE OR USE BLACK INK ONLY
NOTE:

Attach copy of original 1002A
if recompletion or reentry.

☐ ORIGINAL
☒ AMENDED (Reason)

Recomplete

TYPE OF DRILLING OPERATION

☒ STRAIGHT HOLE ☐ DIRECTIONAL HOLE ☐ HORIZONTAL HOLE
☐ SERVICE WELL

If directional or horizontal, see reverse for bottom hole location.

COUNTY	Beaver	SEC	6	TWP	5N	RGE	23ECM
LEASE NAME	Beard State	WELL NO.	1-6				
ELEVATION N Derrick	2,581' Ground	FSL OF 1/4 SEC	660'	FWL OF 1/4 SEC	560'		
OPERATOR NAME	Tex-Ok Energy, LP	OTC/OCC OPERATOR NO.	18105				
ADDRESS	P.O. Box 3010						
CITY	Cody	STATE	Wy	ZIP	82414		

OKLAHOMA CORPORATION COMMISSION
Oil & Gas Conservation Division
Post Office Box 52000
Oklahoma City, Oklahoma 73152-2000
Rule 165:10-3-25

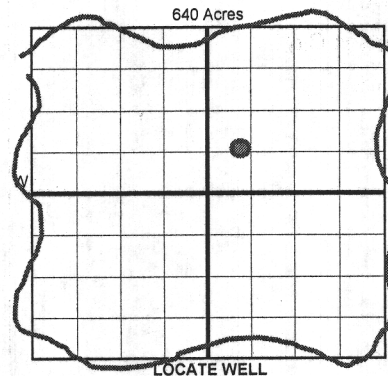
COMPLETION REPORT

SPUD DATE	9/25/1962
DRLG FINISHED DATE	10/18/1962
DATE OF WELL COMPLETION	1/15/1963
1st PROD DATE	1/1/1963
RECOMP DATE	4/18/2018

RECEIVED

MAY 11 2018

OKLAHOMA CORPORATION COMMISSION



COMPLETION TYPE

<input checked="" type="checkbox"/> SINGLE ZONE
<input type="checkbox"/> MULTIPLE ZONE
<input type="checkbox"/> COMMINGLED
LOCATION EXCEPTION ORDER INCREASED DENSITY ORDER NO.

CASING & CEMENT (Form 1002C must be attached)

TYPE	SIZE	WEIGHT	GRADE	FEET	PSI	SAX	TOP OF CMT
CONDUCTOR	8 5/8"			1,315'		625	Surface
SURFACE							
INTERMEDIATE							
PRODUCTION	4 1/2"	9.5#	J-55	6,700'		200	6,180'
LINER							

PACKER @ _____ BRAND & TYPE _____ PLUG @ 6400' TYPE CIBP PLUG @ 5450' TYPE CIBP
PACKER @ _____ BRAND & TYPE _____ PLUG @ 6250' TYPE CIBP PLUG @ 3150' TYPE CIBP
COMPLETION & TEST DATA BY PRODUCING FORMATION 354(CSTR 402MRMN) 404MRMN 451CCGV *per plugging report*

FORMATION	Chester	Morrow	Morrow	Marmaton	Council Grove
SPACING & SPACING ORDER NUMBER		46824/640	46824/640	Unspaced	37505/640
CLASS: Oil, Gas, Dry, Inj. Disp, Comm Disp, Svc	<i>below plug</i> Gas Dry	<i>below plug</i> Gas Dry	Dry	Dry	Dry
PERFORATED INTERVALS	6,586' - 6,652'	6,432' - 6,446'	6,366' - 6,380'	5,590' - 5,598'	3,213' - 3,221'
ACID/VOLUME				5,518' - 5,528'	
				5,470' - 5,478'	
FRACTURE TREATMENT (Fluids/Prop Amounts)					

Min Gas Allowable (165:10-17-7) _____ Gas Purchaser/Measurer N/A
OR _____ First Sales Date N/A
Oil Allowable (165:10-13-3) _____

INITIAL TEST DATA

INITIAL TEST DATE	3/1/1978	1/16/1980	2/27/2018	3/8/2018	4/12/2018
OIL-BBL/DAY	0	1			
OIL-GRAVITY (API)	N/A	60			
GAS-MCF/DAY	225	394			
GAS-OIL RATIO CU FT/BBL	N/A				
WATER-BBL/DAY		15			
PUMPING OR FLOWING	Flowing	Flowing			
INITIAL SHUT-IN PRESSURE					
CHOKE SIZE					
FLOW TUBING PRESSURE					

AS SUBMITTED

A record of the formations drilled through, and pertinent remarks are presented on the reverse. I declare that I have knowledge of the contents of this report and am authorized by my organization to make this report, which was prepared by me or under my supervision and direction, with the data and facts stated herein to be true, correct, and complete to the best of my knowledge and belief.

SIGNATURE Jon Carlisle NAME (PRINT OR TYPE) Jon Carlisle DATE 5/8/18 PHONE NUMBER 307-587-4291
P.O. Box 3010 ADDRESS Cody CITY Wy STATE 82414 ZIP jsc00@tctwest.net EMAIL ADDRESS

PLEASE TYPE OR USE BLACK INK ONLY

FORMATION RECORD

Give formation names and tops, if available, or descriptions and thickness of formations drilled through. Show intervals cored or drillstem tested.

NAMES OF FORMATIONS	TOP
Chase	2,962'
Council Grove	3,006'
Lansing, Kansas City	4,655'
Checkerboard	5,356'
Marmaton	5,464'

LEASE NAME Beard State

WELL NO. 1-6

FOR COMMISSION USE ONLY	
ITD on file <input type="checkbox"/> YES <input type="checkbox"/> NO	
APPROVED _____	DISAPPROVED _____
2) Reject Codes	

Were open hole logs run?	yes <input type="checkbox"/> no <input checked="" type="checkbox"/>
Date Last log was run	<u>12/27/2017 CCL</u>
Was CO ₂ encountered?	yes <input type="checkbox"/> no <input checked="" type="checkbox"/> at what depths? _____
Was H ₂ S encountered?	yes <input type="checkbox"/> no <input checked="" type="checkbox"/> at what depths? _____
Were unusual drilling circumstances encountered?	yes <input type="checkbox"/> no <input checked="" type="checkbox"/>
If yes, briefly explain below	

Other remarks: TOC @ 6,180'. Marmaton and Council Grove had squeeze holes perfered @ 5,615, 5,575', 5,498', 5,445' and 3,200', 3,240' with a cement squeeze throughout these zones.
OCC operator not permitted to test Council Grove but since it was dry and the well was plugged 5-22-2018 the operator was warned.

640 Acres

If more than three drainholes are proposed, attach a separate sheet indicating the necessary information.

Direction must be stated in degrees azimuth. Please note, the horizontal drainhole and its end point must be located within the boundaries of the lease or spacing unit.

Directional surveys are required for all drainholes and directional wells.

640 Acres

BOTTOM HOLE LOCATION FOR DIRECTIONAL HOLE

SEC	TWP	RGE	COUNTY
Spot Location			
1/4	1/4	1/4	1/4
Measured Total Depth		True Vertical Depth	BHL From Lease, Unit, or Property Line:

BOTTOM HOLE LOCATION FOR HORIZONTAL HOLE: (LATERALS)

LATERAL #1

SEC	TWP	RGE	COUNTY
Spot Location			
1/4	1/4	1/4	1/4
Depth of Deviation		Radius of Turn	Direction
Measured Total Depth		True Vertical Depth	BHL From Lease, Unit, or Property Line:

LATERAL #2

SEC	TWP	RGE	COUNTY
Spot Location			
1/4	1/4	1/4	1/4
Depth of Deviation		Radius of Turn	Direction
Measured Total Depth		True Vertical Depth	BHL From Lease, Unit, or Property Line:

LATERAL #3

SEC	TWP	RGE	COUNTY
Spot Location			
1/4	1/4	1/4	1/4
Depth of Deviation		Radius of Turn	Direction
Measured Total Depth		True Vertical Depth	BHL From Lease, Unit, or Property Line: