

Oklahoma Corporation Commission
Oil & Gas Conservation Division
Post Office Box 52000
Oklahoma City, Oklahoma 73152-2000
Rule 165: 10-3-25

Form 1002A

API No.: 35093250800001

Completion Report

Spud Date: May 19, 2018

OTC Prod. Unit No.: 093-224177

Drilling Finished Date: June 15, 2018

1st Prod Date: August 28, 2018

Completion Date: August 22, 2018

Drill Type: HORIZONTAL HOLE

Min Gas Allowable: Yes

Well Name: WAHL 21-20-12 2H

Purchaser/Measurer: CHESAPEAKE OPERATING LLC

Location: MAJOR 21 20N 12W
SW SE SW SW
320 FSL 700 FWL of 1/4 SEC
Derrick Elevation: 1501 Ground Elevation: 1476

First Sales Date: 08/28/2018

Operator: CHESAPEAKE OPERATING LLC 17441
PO BOX 18496
6100 N WESTERN AVE
OKLAHOMA CITY, OK 73154-0496

Completion Type		Location Exception		Increased Density	
X	Single Zone	Order No		Order No	
	Multiple Zone	683968		N/A	
	Commingled				

Casing and Cement								
Type		Size	Weight	Grade	Feet	PSI	SAX	Top of CMT
SURFACE		9 5/8	36	J-55	1491		725	SURFACE
PRODUCTION		7	29	P-110EC	9498		445	4017

Liner								
Type	Size	Weight	Grade	Length	PSI	SAX	Top Depth	Bottom Depth
LINER	4 1/2	13.50	P-110EC	5046	0	465	9005	14051

Total Depth: 14053

Packer		Plug	
Depth	Brand & Type	Depth	Plug Type
There are no Packer records to display.		There are no Plug records to display.	

Initial Test Data										
Test Date	Formation	Oil BBL/Day	Oil-Gravity (API)	Gas MCF/Day	Gas-Oil Ratio Cu FT/BBL	Water BBL/Day	Pumpin or Flowing	Initial Shut-In Pressure	Choke Size	Flow Tubing Pressure
Oct 17, 2018	HUNTON	10	35.5	77	7700	1423	FLOWING		64/64	149

Completion and Test Data by Producing Formation			
Formation Name: HUNTON		Code: 269HNTN	Class: OIL
Spacing Orders		Perforated Intervals	
Order No	Unit Size	From	To
228797	640	9338	13938
Acid Volumes		Fracture Treatments	
69,508 GALLONS ACID		146,421 BARRELS FLUIDS, 5,651,930 POUNDS PROPPANT	

Formation	Top
HUNTON	9303

Were open hole logs run? Yes
Date last log run: June 13, 2018

Were unusual drilling circumstances encountered? No
Explanation:

Other Remarks
There are no Other Remarks.

Lateral Holes
Sec: 21 TWP: 20N RGE: 0W County: MAJOR NW NE NW NW 226 FNL 807 FWL of 1/4 SEC Depth of Deviation: 8271 Radius of Turn: 635 Direction: 2 Total Length: 4750 Measured Total Depth: 14053 True Vertical Depth: 8906 End Pt. Location From Release, Unit or Property Line: 226

FOR COMMISSION USE ONLY	
Status: Accepted	1141207

API NO. 093-25080
OTC PROD.
UNIT NO. 093-224177

PLEASE TYPE OR USE BLACK INK ONLY

NOTE:

Attach copy of original 1002A if recompletion or reentry.

OKLAHOMA CORPORATION COMMISSION

Oil & Gas Conservation Division

Post Office Box 52000

Oklahoma City, Oklahoma 73152-2000

Rule 165:10-3-25

RECEIVED

Form 1002A

Rev. 2009

OCT 29 2018

OKLAHOMA CORPORATION COMMISSION

☒ ORIGINAL
☐ AMENDED
Reason Amended

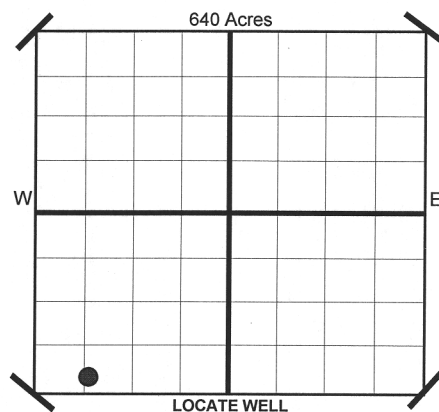
TYPE OF DRILLING OPERATION

☐ STRAIGHT HOLE ☐ DIRECTIONAL HOLE ☒ HORIZONTAL HOLE
☐ SERVICE WELL

If directional or horizontal, see reverse for bottom hole location.

COMPLETION REPORT

COUNTY	Major	SEC	21	TWP	20N	RGE	12W
LEASE NAME	Wahl 21-20-12			WELL NO	2H		
SHL	SW 1/4	SE 1/4	SW 1/4	SW 1/4	FSL	FWL OF	1/4 SEC
ELEVATION	1,501			Ground	1,476	700	
Derrick Fl	1,501			Ground	1,476	Latitude (if Known)	
OPERATOR NAME	CHESAPEAKE OPERATING, L.L.C.				OTC/OCC OPERATOR NO.	17441	
ADDRESS	P.O. BOX 18496						
CITY	OKLAHOMA CITY			STATE	OK	ZIP	73154



COMPLETION TYPE

<input checked="" type="checkbox"/> SINGLE ZONE
<input type="checkbox"/> MULTIPLE ZONE
<input type="checkbox"/> COMMINGLED
LOCATION EXCEPTION ORDER NO. 683968 F.O.
INCREASED DENSITY ORDER NO. N/A

CASING & CEMENT (Form 1002C must be attached)

TYPE	SIZE	WEIGHT	GRADE	FEET	PSI	SAX	TOP
CONDUCTOR							
SURFACE	9-5/8"	36#	J-55	1,491		725	Surface
INTERMEDIATE							
PRODUCTION	7"	29#	P-110EC	9,498		445	4,017
LINER	4-1/2"	13.50#	P-110EC	9,005-14,051		465	9,005
TOTAL DEPTH							14,053

PACKER @ BRAND & TYPE
PACKER @ BRAND & TYPE

PLUG @ TYPE
PLUG @ TYPE
PLUG @ TYPE
PLUG @ TYPE

COMPLETION & TEST DATA BY PRODUCING FORMATION

FORMATION	Hunton						
SPACING & SPACING ORDER NUMBER	640 228797						
CLASS: Oil, Gas, Dry, Inj. Disp, Comm Disp, Svc	Oil						
PERFORATED INTERVALS	9,338 - 13,938						
ACID/VOLUME	69,508 gals acid 146,421 bbls fluids 5,651,930# proppant						
FRACTURE TREATMENT (Fluids/Prop Amounts)							

Reported to
Fiber Focus

☒

Minimum Gas Allowable

(165:10-17-7)

Gas Purchaser/Measurer

Chesapeake Operating, L.L.C.

OR

Oil Allowable

(165:10-13-3)

1st Sales Date

8/28/2018

INITIAL TEST DATA

INITIAL TEST DATE	10/17/2018						
OIL-BBL/DAY	10						
OIL-GRAVITY (API)	35.5						
GAS-MCF/DAY	77						
GAS-OIL RATIO CU FT/BBL	7,700						
WATER-BBL/DAY	1,423						
PUMPING OR FLOWING	Flowing						
INITIAL SHUT-IN PRESSURE							
CHOKE SIZE	64/64						
FLOW TUBING PRESSURE	149						

AS SUBMITTED

A record of the formations drilled through, and pertinent remarks are presented on the reverse. I declare that I have knowledge of the contents of this report and am authorized by my organization to make this report, which was prepared by me or under my supervision and direction, with the data and facts stated herein to be true, correct, and complete to the best of my knowledge and belief.

	JUANITA COOPER - REGULATORY SPECIALIST	10/25/2018	405-848-8000
SIGNATURE	NAME (PRINT OR TYPE)	DATE	PHONE NUMBER
P.O. BOX 18496	OKLAHOMA CITY	OK	73154
ADDRESS	CITY	STATE	ZIP
		juanita.cooper@chk.com	
		EMAIL ADDRESS	

PLEASE TYPE OR USE BLACK INK ONLY
FORMATION RECORD

Give formation names and tops, if available, or descriptions and thickness of formations drilled through. Show intervals cored or drillstem tested.

LEASE NAME Wahl 21-20-12

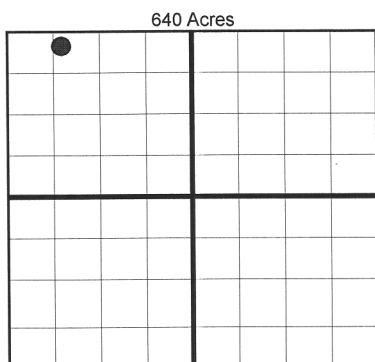
WELL NO. 2H

NAMES OF FORMATIONS	TOP
Hunton	9,303

FOR COMMISSION USE ONLY	
ITD on file <input type="checkbox"/> YES <input type="checkbox"/> NO	
APPROVED _____	DISAPPROVED _____
2) Reject Codes	

Were open hole logs run?	<u>X</u> yes <u> </u> no
Date Last log was run	<u>6/13/2018</u>
Was CO ₂ encountered?	<u> </u> yes <u>X</u> no at what depths?
Was H ₂ S encountered?	<u> </u> yes <u>X</u> no at what depths?
Were unusual drilling circumstances encountered?	<u> </u> yes <u>X</u> no
If yes, briefly explain.	

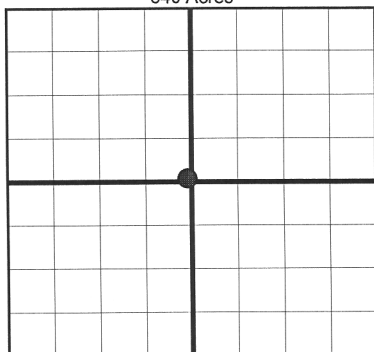
Other remarks:



If more than three drainholes are proposed, attach a separate sheet indicating the necessary information.

Direction must be stated in degrees azimuth. Please note, the horizontal drainhole and its end point must be located within the boundaries of the lease or spacing unit.

Directional surveys are required for all drainholes and directional wells.



BOTTOM HOLE LOCATION FOR DIRECTIONAL HOLE

SEC	TWP	RGE	COUNTY			
Spot Location				Feet From 1/4 Sec Lines	FSL	FWL
1/4	1/4	1/4	1/4			
Measured Total Depth		True Vertical Depth		BHL From Lease, Unit, or Property Line:		

BOTTOM HOLE LOCATION FOR HORIZONTAL HOLE: (LATERALS)

SEC	TWP	RGE	COUNTY	Major		
21	20N	12W				
Spot Location				Feet From 1/4 Sec Lines	FNL	FWL
NW 1/4	NE 1/4	NW 1/4	NW 1/4	226	807	
Depth of Deviation		Radius of Turn		Total Length		
8,271		635		4,750		
Measured Total Depth		True Vertical Depth		BHL From Lease, Unit, or Property Line:		
14,053		8,906		226		

LATERAL #2

SEC	TWP	RGE	COUNTY			
Spot Location				Feet From 1/4 Sec Lines	FSL	FWL
1/4	1/4	1/4	1/4			
Depth of Deviation		Radius of Turn		Total Length		
Measured Total Depth		True Vertical Depth		BHL From Lease, Unit, or Property Line:		

LATERAL #3

SEC	TWP	RGE	COUNTY			
Spot Location				Feet From 1/4 Sec Lines	FSL	FWL
1/4	1/4	1/4	1/4			
Depth of Deviation		Radius of Turn		Total Length		
Measured Total Depth		True Vertical Depth		BHL From Lease, Unit, or Property Line:		

TOPOGRAPHIC LAND SURVEYORS OF OKLAHOMA

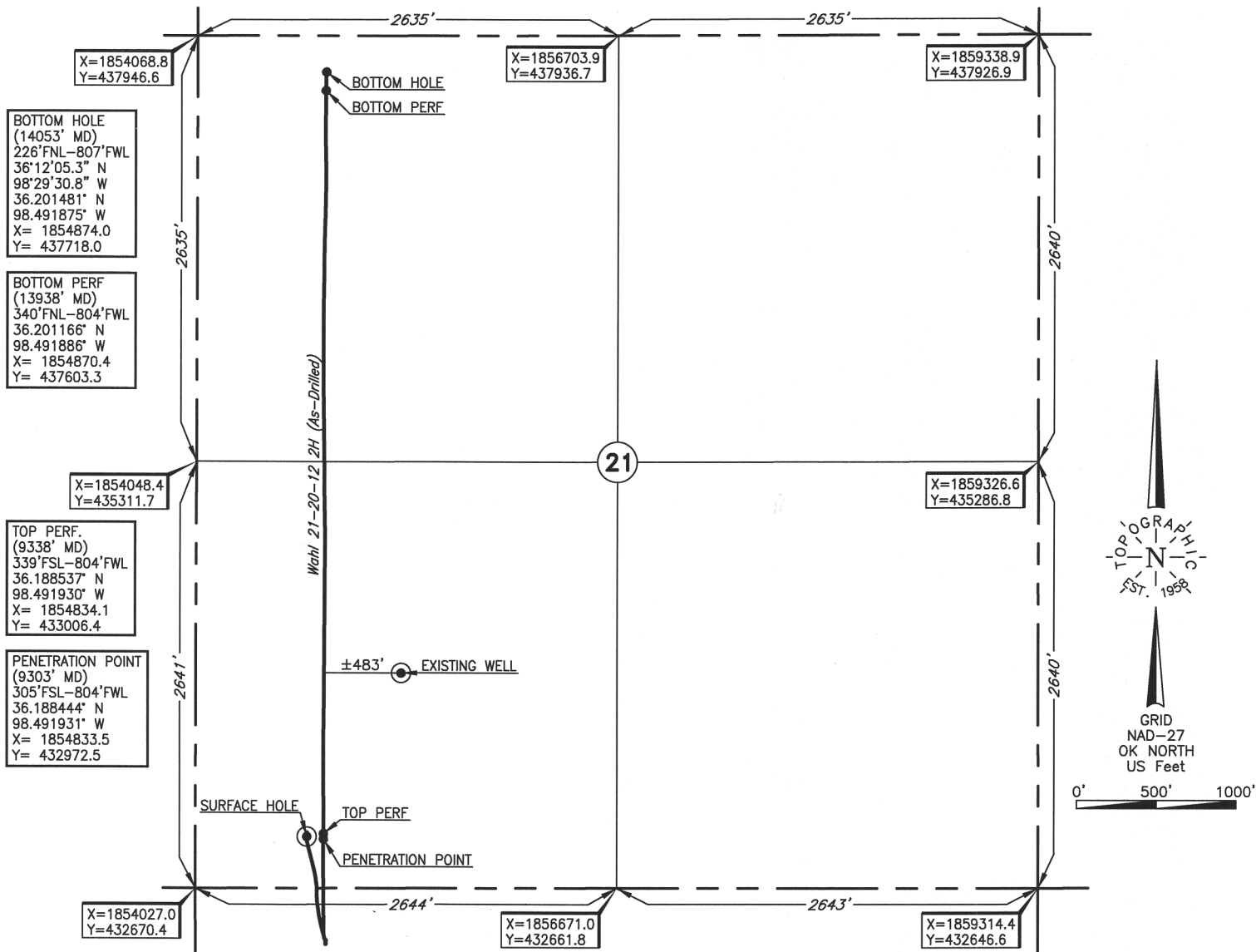
13800 WIRELESS WAY, OKLA. CITY, OKLA. 73134 * LOCAL (405) 843-4847 * OUT OF STATE (800) 654-3219

Certificate of Authorization No. 1293 LS

MAJOR

County, Oklahoma

320'FSL - 700'FWL Section 21 Township 20N Range 12W I.M.



Operator: CHESAPEAKE OPERATING, L.L.C.

Lease Name: WAHL 21-20-12

Well No.: 2H

ELEVATION:

1476' Gr. at Level Pad

Topography & Vegetation Loc. fell on level pad

Good Drill Site? Yes

Reference Stakes or Alternate Location
Stakes Set None

Best Accessibility to Location From South off county road

Distance & Direction

from Hwy Jct or Town From Fairview, OK, go ±5.6 mi. South on St. Hwy. 58, then ±1.0 mi. West
on county road to the SW Cor. of Sec. 21-T20N-R12W

(This information was gathered with a GPS receiver with ±1 foot Horiz./Vert. accuracy.)

DATUM: NAD-27
LAT: 36°11'18.5"N
LONG: 98°29'32.2"W
LAT: 36.188486° N
LONG: 98.492283° W
STATE PLANE
COORDINATES: (US Feet)
ZONE: OK NORTH
X: 1854729.6
Y: 432988.1

302025 Date of Drawing: Aug. 29, 2018
Invoice # 275492A Date Staked: May 04, 2017

JP

FINAL AS-DRILLED PLAT

AS-DRILLED INFORMATION
FURNISHED BY CHESAPEAKE OPERATING, L.L.C.