

Oklahoma Corporation Commission
Oil & Gas Conservation Division
Post Office Box 52000
Oklahoma City, Oklahoma 73152-2000
Rule 165: 10-3-25

Form 1002A

API No.: 35037293710002

Completion Report

Spud Date: June 14, 2017

OTC Prod. Unit No.:

Drilling Finished Date: June 19, 2017

1st Prod Date: September 07, 2017

Completion Date: September 05, 2017

Drill Type: DIRECTIONAL HOLE

Well Name: FARRIS 37

Purchaser/Measurer:

Location: CREEK 17 18N 7E
E2 E2 SW SW
660 FSL 1236 FWL of 1/4 SEC
Derrick Elevation: 0 Ground Elevation: 867

First Sales Date:

Operator: MID-CON ENERGY OPERATING LLC 23271

2431 E 61ST ST STE 850
TULSA, OK 74136-1236

Completion Type		Location Exception		Increased Density	
	Single Zone	Order No		Order No	
	Multiple Zone	There are no Location Exception records to display.		There are no Increased Density records to display.	
X	Commingled				

Casing and Cement								
Type		Size	Weight	Grade	Feet	PSI	SAX	Top of CMT
SURFACE		8 5/8	24	J-55	749		375	SURFACE
PRODUCTION		5 1/2	15.5	J-55	2907		475	SURFACE

Liner								
Type	Size	Weight	Grade	Length	PSI	SAX	Top Depth	Bottom Depth
There are no Liner records to display.								

Total Depth: 2932

Packer		Plug	
Depth	Brand & Type	Depth	Plug Type
There are no Packer records to display.		There are no Plug records to display.	

Initial Test Data										
Test Date	Formation	Oil BBL/Day	Oil-Gravity (API)	Gas MCF/Day	Gas-Oil Ratio Cu FT/BBL	Water BBL/Day	Pumpin or Flowing	Initial Shut-In Pressure	Choke Size	Flow Tubing Pressure
Aug 29, 2017	RED FORK	3.1				17	PUMPING			
Sep 07, 2017	ARBUCKLE					270	PUMPING			

Completion and Test Data by Producing Formation			
Formation Name: RED FORK		Code: 404RDFK	Class: OIL
Spacing Orders		Perforated Intervals	
Order No	Unit Size	From	To
There are no Spacing Order records to display.		2461	2482
Acid Volumes		Fracture Treatments	
1,000 GALLONS 10% SME		39,090 POUNDS 20/40 SAND, 36,090 POUNDS 12/20 SAND	

Formation Name: ARBUCKLE		Code: 169ABCK	Class: OIL
Spacing Orders		Perforated Intervals	
Order No	Unit Size	From	To
There are no Spacing Order records to display.		2670	2750
Acid Volumes		Fracture Treatments	
500 GALLONS 15% NEFE		N/A	

Formation	Top
LAYTON	1400
CLEVELAND	1770
PINK LIME	2340
RED FORK	2460
ARBUCKLE	2670

Were open hole logs run? Yes
Date last log run: June 20, 2017

Were unusual drilling circumstances encountered? No
Explanation:

Other Remarks
There are no Other Remarks.

Bottom Holes
Sec: 17 TWP: 18N RGE: 7E County: CREEK
NE SW SW SW
655 FSL 476 FWL of 1/4 SEC
Depth of Deviation: 0 Radius of Turn: 0 Direction: 0 Total Length: 0
Measured Total Depth: 2898 True Vertical Depth: 2775 End Pt. Location From Release, Unit or Property Line: 200

FOR COMMISSION USE ONLY	
Status: Accepted	1137775

API NO. 037-29371
OTC PROD.
UNIT NO.

PLEASE TYPE OR USE BLACK INK ONLY
NOTE:

Attach copy of original 1002A
if recompletion or reentry.

OKLAHOMA CORPORATION COMMISSION
Oil & Gas Conservation Division
Post Office Box 52000
Oklahoma City, Oklahoma 73152-2000
Rule 165:10-3-25

RECEIVED

OCT 05 2017

OKLAHOMA CORPORATION
COMMISSION

640 Acres

☒ ORIGINAL
☐ AMENDED (Reason)

TYPE OF DRILLING OPERATION

☐ STRAIGHT HOLE ☒ DIRECTIONAL HOLE ☐ HORIZONTAL HOLE
☐ SERVICE WELL

If directional or horizontal, see reverse for bottom hole location.

COUNTY	CREEK	SEC	17	TWP	18N	RGE	7E
LEASE NAME	FARRIS			WELL NO.	37		
E2 1/4 E2 1/4 SW 1/4 SW 1/4	FSL OF 1/4 SEC		660	FWL OF 1/4 SEC		1236	
ELEVATION	Ground	867	Latitude (if known)		Longitude (if known)		
OPERATOR NAME	MID-CON ENERGY OPERATING, LLC			OTC/OCC OPERATOR NO.	23271		
ADDRESS	2341 E 61ST ST., SUITE 850						
CITY	TULSA		STATE	OK	ZIP	74136	

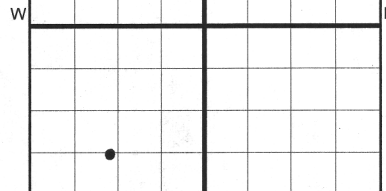
SPUD DATE 6/14/2017

DRLG FINISHED DATE 6/19/2017

DATE OF WELL COMPLETION 9/05/2017

1st PROD DATE 9/07/2017

RECOMP DATE



LOCATE WELL

COMPLETION TYPE

<input type="checkbox"/> SINGLE ZONE
<input type="checkbox"/> MULTIPLE ZONE
<input checked="" type="checkbox"/> COMMINGLED
Application Date 9/22/2017
LOCATION
EXCEPTION ORDER
INCREASED DENSITY
ORDER NO.

CASING & CEMENT (Form 1002C must be attached)

TYPE	SIZE	WEIGHT	GRADE	FEET	PSI	SAX	TOP OF CMT
CONDUCTOR							
SURFACE	8 5/8"	24	J-55	749		375	SURF
INTERMEDIATE							
PRODUCTION	5 1/2"	15.5	J-55	2907		475	SURF
LINER							
						TOTAL DEPTH	2,932

PACKER @ _____ BRAND & TYPE _____ PLUG @ _____ TYPE _____ PLUG @ _____ TYPE _____
PACKER @ _____ BRAND & TYPE _____ PLUG @ _____ TYPE _____ PLUG @ _____ TYPE _____

COMPLETION & TEST DATA BY PRODUCING FORMATION *404RDFK / 169ABCK*

FORMATION	REDFORK	ARBUCKLE		
SPACING & SPACING ORDER NUMBER	NO SPACING	NO SPACING		
CLASS: Oil, Gas, Dry, Inj, Disp, Comm Disp, Svc	OIL	OIL		
PERFORATED INTERVALS	2461' - 82'	2670' - 85'		
		2744' - 50'		
ACID/VOLUME	1000 GAL 10% SME	500 GAL 15%		
FRACTURE TREATMENT (Fluids/Prop Amounts)	39,090 lbs 20/40 snd	NE-FE N/A		
	36,090 lbs 12/20 snd			

*Monitor
Report to Focus*

☐ Min Gas Allowable (165:10-17-7)
OR
☐ Oil Allowable (165:10-13-3)

Gas Purchaser/Measurer
First Sales Date

INITIAL TEST DATA

INITIAL TEST DATE	8/29/2017	9/7/2017		
OIL-BBL/DAY	3.1	0		
OIL-GRAVITY (API)				
GAS-MCF/DAY				
GAS-OIL RATIO CU FT/BBL				
WATER-BBL/DAY	17	270		
PUMPING OR FLOWING	PUMPING	PUMPING		
INITIAL SHUT-IN PRESSURE				
CHOKE SIZE				
FLOW TUBING PRESSURE				

AS SUBMITTED

A record of the formations drilled through, and pertinent remarks are presented on the reverse. I declare that I have knowledge of the contents of this report and am authorized by my organization to make this report, which was prepared by me or under my supervision and direction, with the data and facts stated herein to be true, correct, and complete to the best of my knowledge and belief.

<i>Annie Houchin</i>	ANNIE HOUCHIN	9/22/2017	918-748-3343
SIGNATURE	NAME (PRINT OR TYPE)	DATE	PHONE NUMBER
2431 E 61st St., Suite 850	TULSA OK 74136		ahouchin@midcon-energy.com
ADDRESS	CITY STATE ZIP		EMAIL ADDRESS

PLEASE TYPE OR USE BLACK INK ONLY
FORMATION RECORD

Give formation names and tops, if available, or descriptions and thickness of formations drilled through. Show intervals cored or drillstem tested.

NAMES OF FORMATIONS	TOP
LAYTON	1,400
CLEVELAND	1,770
PINK LIME	2340
RED FORK	2,460
ARBUCKLE	2,670

LEASE NAME FARRIS WELL NO. 37

FOR COMMISSION USE ONLY	
ITD on file <input type="checkbox"/> YES <input type="checkbox"/> NO	
APPROVED _____	DISAPPROVED _____
2) Reject Codes	

Were open hole logs run? X yes ☐ no

Date Last log was run 6/20/2017

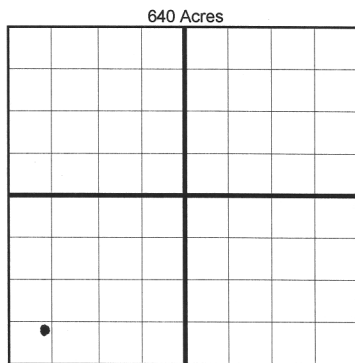
Was CO₂ encountered? ☐ yes X no at what depths? _____

Was H₂S encountered? ☐ yes X no at what depths? _____

Were unusual drilling circumstances encountered? ☐ yes X no

If yes, briefly explain below _____

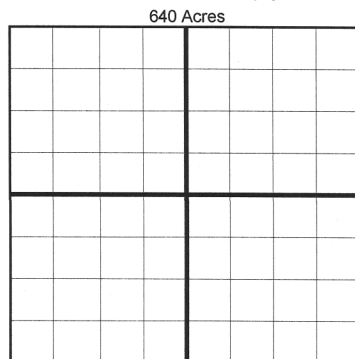
Other remarks: _____



If more than three drainholes are proposed, attach a separate sheet indicating the necessary information.

Direction must be stated in degrees azimuth.
Please note, the horizontal drainhole and its end point must be located within the boundaries of the lease or spacing unit.

Directional surveys are required for all drainholes and directional wells.



BOTTOM HOLE LOCATION FOR DIRECTIONAL HOLE

SEC 17	TWP 18N	RGE 07E	COUNTY CREEK
Spot Location NE 1/4 SW 1/4 SW 1/4 SW 1/4	Feet From 1/4 Sec Lines	FSL 655	FWL 476
Measured Total Depth 2898	True Vertical Depth 2775	BHL From Lease, Unit, or Property Line: 200	

BOTTOM HOLE LOCATION FOR HORIZONTAL HOLE: (LATERALS)

SEC	TWP	RGE	COUNTY
Spot Location 1/4 1/4 1/4 1/4	Feet From 1/4 Sec Lines	FSL	FWL
Depth of Deviation	Radius of Turn	Direction	Total Length
Measured Total Depth	True Vertical Depth	BHL From Lease, Unit, or Property Line:	

LATERAL #2

SEC	TWP	RGE	COUNTY
Spot Location 1/4 1/4 1/4 1/4	Feet From 1/4 Sec Lines	FSL	FWL
Depth of Deviation	Radius of Turn	Direction	Total Length
Measured Total Depth	True Vertical Depth	BHL From Lease, Unit, or Property Line:	

LATERAL #3

SEC	TWP	RGE	COUNTY
Spot Location 1/4 1/4 1/4 1/4	Feet From 1/4 Sec Lines	FSL	FWL
Depth of Deviation	Radius of Turn	Direction	Total Length
Measured Total Depth	True Vertical Depth	BHL From Lease, Unit, or Property Line:	