

Oklahoma Corporation Commission
Oil & Gas Conservation Division
Post Office Box 52000
Oklahoma City, Oklahoma 73152-2000
Rule 165: 10-3-25

Form 1002A

API No.: 35043235220000

Completion Report

Spud Date: June 20, 2017

OTC Prod. Unit No.: 043-222223

Drilling Finished Date: July 16, 2017

1st Prod Date: October 07, 2017

Completion Date: September 08, 2017

Drill Type: HORIZONTAL HOLE

Min Gas Allowable: Yes

Well Name: SCHROEDER 2-19-17 1H

Purchaser/Measurer: ENABLE

Location: DEWEY 11 19N 17W
SW NW NE NE
340 FNL 1025 FEL of 1/4 SEC
Latitude: 36.14339324 Longitude: -98.97674938
Derrick Elevation: 1820 Ground Elevation: 1795

First Sales Date: 10/07/2017

Operator: TAPSTONE ENERGY LLC 23467

100 E MAIN ST
OKLAHOMA CITY, OK 73104-2509

Completion Type		Location Exception		Increased Density	
X	Single Zone	Order No		Order No	
	Multiple Zone	671502		There are no Increased Density records to display.	
	Commingled				

Casing and Cement							
Type	Size	Weight	Grade	Feet	PSI	SAX	Top of CMT
SURFACE	13 3/8	54.5	J-55	1500	1250	1270	SURFACE
INTERMEDIATE	9 5/8	43.5	P-110	10250	2220	995	5591
PRODUCTION	5 1/2	20	P-110	16160	8005	1655	7250

Liner								
Type	Size	Weight	Grade	Length	PSI	SAX	Top Depth	Bottom Depth
There are no Liner records to display.								

Total Depth: 16160

Packer		Plug	
Depth	Brand & Type	Depth	Plug Type
10904	AS1-X	There are no Plug records to display.	

Initial Test Data

Test Date	Formation	Oil BBL/Day	Oil-Gravity (API)	Gas MCF/Day	Gas-Oil Ratio Cu FT/BBL	Water BBL/Day	Pumpin or Flowing	Initial Shut-In Pressure	Choke Size	Flow Tubing Pressure
Nov 05, 2017	MISSISSIPPIAN	224	45	2764	12339	1227	FLOWING		46	697

Completion and Test Data by Producing Formation

Formation Name: MISSISSIPPIAN		Code: 359MSSP		Class: OIL	
Spacing Orders		Perforated Intervals			
Order No	Unit Size	From	To		
666765	640	11255	16160		
Acid Volumes		Fracture Treatments			
235,494 GALLONS 15% HCL		204,672 BARRELS FLUID, 4,189,848 POUNDS PROPPANT			

Formation	Top
BASE HEEBNER	6178
TONKAWA	6643
COTTAGE GROVE	7251
HOGSHOOTER	7374
OSWEGO LIMESTONE	7867
ATOKA	8350
CHESTER	8879
UPPER MERAMEC	10012
UPPER OSAGE	10786

Were open hole logs run? No
Date last log run:

Were unusual drilling circumstances encountered? No
Explanation:

Other Remarks
OCC - THIS DOCUMENT IS ACCEPTED BASED ON THE DATA SUBMITTED THE FINAL LOCATION EXCEPTION HAS NOT BEEN SUBMITTED.

Lateral Holes
<p>Sec: 2 TWP: 19N RGE: 17W County: DEWEY</p> <p>NE NW NE NE</p> <p>167 FNL 693 FEL of 1/4 SEC</p> <p>Depth of Deviation: 10444 Radius of Turn: 817 Direction: 2 Total Length: 4899</p> <p>Measured Total Depth: 16160 True Vertical Depth: 10654 End Pt. Location From Release, Unit or Property Line: 167</p>

FOR COMMISSION USE ONLY
<div>Status: Accepted</div> <div>1138298</div>

RECEIVED

DEC 07 2017

Form 1002A
Rev. 2009

API NO. 3504323522
OTC PROD. UNIT NO. 043222223

PLEASE TYPE OR USE BLACK INK ONLY

NOTE:

Attach copy of original 1002A if recompletion or reentry.

☒ ORIGINAL
☐ AMENDED (Reason)

OKLAHOMA CORPORATION COMMISSION
Oil & Gas Conservation Division
Post Office Box 52000
Oklahoma City, Oklahoma 73152-2000
Rule 165:10-3-25

OKLAHOMA CORPORATION COMMISSION

COMPLETION REPORT

TYPE OF DRILLING OPERATION

☐ STRAIGHT HOLE ☐ DIRECTIONAL HOLE ☒ HORIZONTAL HOLE
☐ SERVICE WELL

If directional or horizontal, see reverse for bottom hole location.

COUNTY	DEWEY	SEC	11	TWP	19N	RGE	17W
LEASE NAME	SCHROEDER 2-19-17			WELL NO.	1H		
SW 1/4 NW 1/4 NE 1/4 NE 1/4	FNL OF 1/4 SEC 340'		FEL OF 1/4 SEC 1,025'				
ELEVATION Derrick FL	1,820'	Ground	1,795'	Latitude (if known)	36.14339324		
Longitude (if known)	-98.97674938						
OPERATOR NAME	TAPSTONE ENERGY, LLC			OTC/OCC OPERATOR NO.	23467		
ADDRESS	PO BOX 1608						
CITY	Oklahoma City	STATE	OK	ZIP	73101-1608		

640 Acres

LOCATE WELL

COMPLETION TYPE

☒ SINGLE ZONE
☐ MULTIPLE ZONE
Application Date
COMINGLED
Application Date
LOCATION
EXCEPTION ORDER
INCREASED DENSITY
ORDER NO.

CASING & CEMENT (Form 1002C must be attached)

TYPE	SIZE	WEIGHT	GRADE	FEET	PSI	SAX	TOP OF CMT
CONDUCTOR							
SURFACE	13 3/8	54.5	J-55	1,500'	1,250	1,270	SURFACE
INTERMEDIATE	9 5/8	43.5	P-110	10,250'	2,220	995	5,591' EST
PRODUCTION	5 1/2	20	P-110	16,160'	8,005	1,655	7,250' EST
LINER							
TOTAL DEPTH							16,160'

PACKER @ 10,904' BRAND & TYPE AS1-X PLUG @ TYPE PLUG @ TYPE
PACKER @ BRAND & TYPE PLUG @ TYPE PLUG @ TYPE

COMPLETION & TEST DATA BY PRODUCING FORMATION 359 MESSP

FORMATION	MISSISSIPPIAN						
SPACING & SPACING ORDER NUMBER	640 ac - 666765						
CLASS: Oil, Gas, Dry, Inj, Disp, Comm Disp, Svc	OIL						
PERFORATED INTERVALS	11,255' - 16,160'						
ACID/VOLUME	235,494 gal 15% HCL						
FRACTURE TREATMENT (Fluids/Prop Amounts)	204,672 bbls Fluid 4,189,848# PROPPANT						

Reported to Finc Focus

Min Gas Allowable (165:10-17-7)

Gas Purchaser/Measurer

ENABLE

☒

OR

First Sales Date

10/7/2017

INITIAL TEST DATA

INITIAL TEST DATE	11/5/2017						
OIL-BBL/DAY	224						
OIL-GRAVITY (API)	45						
GAS-MCF/DAY	2,764						
GAS-OIL RATIO CU FT/BBL	12,339						
WATER-BBL/DAY	1,227						
PUMPING OR FLOWING	FLOWING						
INITIAL SHUT-IN PRESSURE							
CHOKE SIZE	46						
FLOW TUBING PRESSURE	697						

AS SUBMITTED

A record of the formations drilled through, and pertinent remarks are presented on the reverse. I declare that I have knowledge of the contents of this report and am authorized by my organization to make this report, which was prepared by me or under my supervision and direction, with the data and facts stated herein to be true, correct, and complete to the best of my knowledge and belief.

SIGNATURE	BRYAN ROTHER	DATE	12/7/2017	PHONE NUMBER	405-702-1600
PO BOX 1608	NAME (PRINT OR TYPE)	REGULATORY@TAPSTONEENERGY.COM			
ADDRESS	CITY	STATE	ZIP	EMAIL ADDRESS	

Give formation names and tops, if available, or descriptions and thickness of formations drilled through. Show intervals cored or drillstem tested.

WELL NO. 1H

NAMES OF FORMATIONS	TOP
BASE HEEBNER	6,178
TONKAWA	6,643
COTTAGE GROVE	7251
HOSHOOTER	7,374
OSWEGO LIMESTONE	7,867
ATOKA	8,350
CHESTER	8,879
UPPER MERAMEC	10,012'
UPPER OSAGE	10,786'

FOR COMMISSION USE ONLY	
ITD on file	<input type="checkbox"/> YES <input type="checkbox"/> NO
APPROVED	DISAPPROVED
2) Reject Codes	

Were open hole logs run? ☐ yes ☒ no

Date Last log was run _____

was CO₂ encountered? ☐ yes ☒ no at what depths? _____

was H₂S encountered? ☐ yes ☒ no at what depths? _____

Were unusual drilling circumstances encountered? ☐ yes ☒ no

If yes, briefly explain below _____

Other remarks:

640 Acres

If more than three drainholes are proposed, attach a separate sheet indicating the necessary information.

Direction must be stated in degrees azimuth.
Please note, the horizontal drainhole and its end point must be located within the boundaries of the lease or spacing unit.

Directional surveys are required for all drainholes and directional wells.

640 Acres

A blank 10x10 grid with a bold cross dividing it into four 5x5 quadrants.

BOTTOM HOLE LOCATION FOR DIRECTIONAL HOLE

SEC	TWP	RGE	COUNTY			
Spot Location				Feet From 1/4 Sec Lines	FNL	FEL
1/4	1/4	1/4	1/4			
Measured Total Depth		True Vertical Depth		BHL From Lease, Unit, or Property Line:		

BOTTOM HOLE LOCATION FOR HORIZONTAL HOLE: (LATERALS)

LATERAL #1

SEC 2	TWP 19N	RGE 17W	COUNTY DEWEY
Spot Location			
NE 1/4	NW 1/4	NE 1/4	NE 1/4
Feet From 1/4 Sec Lines		FNL 167'	FEL 693'
Depth of Deviation	10,444'	Radius of Turn	817
Direction		2.27	Total Length
Measured Total Depth		4,899'	
16,160'		True Vertical Depth	
10,654'		BHL From Lease, Unit, or Property Line:	
		167'	

LATERAL #2

SEC	TWP	RGE	COUNTY			
Spot Location				Feet From 1/4 Sec Lines	FSL	FWL
1/4	1/4	1/4	1/4			
Depth of Deviation		Radius of Turn	Direction	Total Length		
Measured Total Depth		True Vertical Depth	BHL From Lease, Unit, or Property Line:			

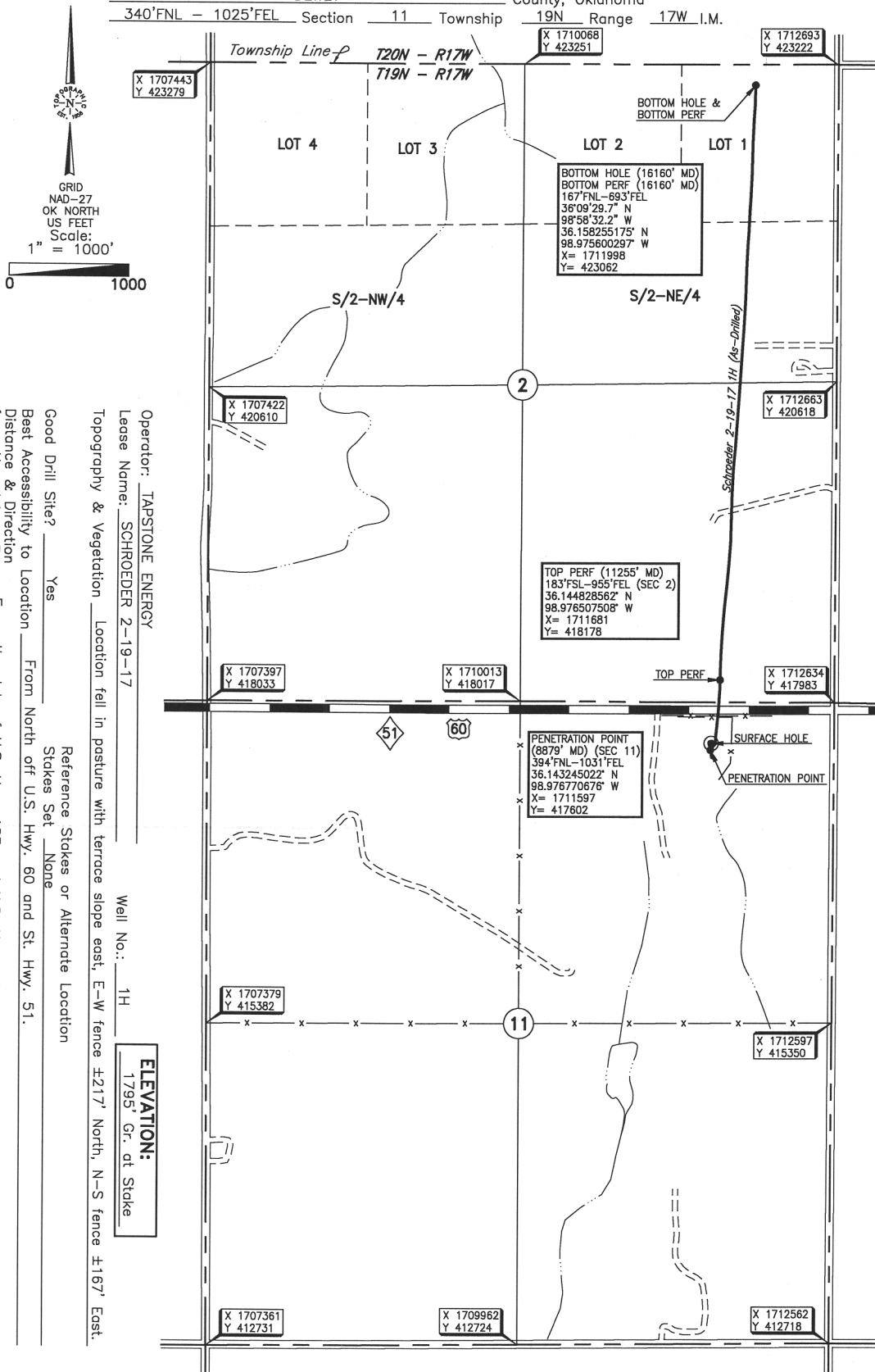
LATERAL #3

SEC	TWP	RGE	COUNTY			
Spot Location				Feet From 1/4 Sec Lines	FSL	FWL
1/4	1/4	1/4	1/4			
Depth of Deviation		Radius of Turn	Direction	Total Length		
Measured Total Depth		True Vertical Depth	BHL From Lease, Unit, or Property Line:			

DEWEY

County, Oklahoma

340'FNL - 1025'FEL Section 11 Township 19N Range 17W I.M.



DATUM: NAD-27
 LAT: 36°08'36.2"N
 LONG: 98°58'36.3"W
 LAT: 36.143393241°N
 LONG: 98.976749376°W
 STATE PLANE
 COORDINATES (US FEET):
 ZONE: OK NORTH
 X: 1711604
 Y: 417656

281070 Date of Drawing: Sep. 11, 2017
 Invoice # 275469 Date Staked: May 2, 2017 JP

FINAL AS-DRILLED PLAT

AS-DRILLED INFORMATION
 FURNISHED BY TAPSTONE ENERGY