

Oklahoma Corporation Commission
Oil & Gas Conservation Division
Post Office Box 52000
Oklahoma City, Oklahoma 73152-2000
Rule 165: 10-3-25

Form 1002A

API No.: 35003232780000

Completion Report

Spud Date: July 17, 2017

OTC Prod. Unit No.: 003-222329

Drilling Finished Date: August 04, 2017

1st Prod Date: September 13, 2017

Completion Date: September 04, 2017

Drill Type: HORIZONTAL HOLE

Min Gas Allowable: Yes

Well Name: HARVESTER 11-25-12 1H

Purchaser/Measurer: CHESAPEAKE OPERATING LLC

Location: ALFALFA 11 25N 12W
NE NE NE NW
180 FNL 2395 FWL of 1/4 SEC
Derrick Elevation: 1357 Ground Elevation: 1331

First Sales Date: 09/13/2017

Operator: CHESAPEAKE OPERATING LLC 17441
PO BOX 18496
6100 N WESTERN AVE
OKLAHOMA CITY, OK 73154-0496

Completion Type		Location Exception		Increased Density	
X	Single Zone	Order No		Order No	
	Multiple Zone	669790		There are no Increased Density records to display.	
	Commingled	670573 COR			

Casing and Cement							
Type	Size	Weight	Grade	Feet	PSI	SAX	Top of CMT
SURFACE	16	84	J-55	477		445	SURFACE
INTERMEDIATE	10 3/4	45.50	J-55	1233		370	SURFACE
PRODUCTION	7 5/8	29.70	P-110	6219		375	3088

Liner								
Type	Size	Weight	Grade	Length	PSI	SAX	Top Depth	Bottom Depth
LINER	4 1/2	13.50	P-110EC	4816	0	0	6060	

Total Depth: 10876

Packer	
Depth	Brand & Type
There are no Packer records to display.	

Plug	
Depth	Plug Type
There are no Plug records to display.	

Initial Test Data

Test Date	Formation	Oil BBL/Day	Oil-Gravity (API)	Gas MCF/Day	Gas-Oil Ratio Cu FT/BBL	Water BBL/Day	Pumpin or Flowing	Initial Shut-In Pressure	Choke Size	Flow Tubing Pressure
Oct 24, 2017	MISSISSIPPI LIME	352	32	772	2193	1467	PUMPING			151

Completion and Test Data by Producing Formation									
Formation Name: MISSISSIPPI LIME				Code: 351MSSLM			Class: OIL		
Spacing Orders				Perforated Intervals					
Order No		Unit Size		From			To		
158770		640		There are no Perf. Intervals records to display.					
Acid Volumes				Fracture Treatments					
10,000 GALLONS 15% HCL ACID				52,322 BARRELS FLUIDS					

Formation	Top
MISSISSIPPI LIME	6232

Were open hole logs run? No
Date last log run:

Were unusual drilling circumstances encountered? No
Explanation:

Other Remarks
OCC - RE-PUSH TO CORRECT LATERAL FOOTAGE FROM WEST LINE (TYPO). OCC - THIS WELL IS AN OPEN HOLE COMPLETION FROM BOTTOM OF THE 7 5/8" CASING AT 6,219' TO TERMINUS AT 10,876'. THE 4 1/2" LINER IS NOT CEMENTED.

Lateral Holes
Sec: 11 TWP: 25N RGE: 12W County: ALFALFA NE SE SW SW 505 FSL 1032 FWL of 1/4 SEC Depth of Deviation: 5200 Radius of Turn: 807 Direction: 182 Total Length: 4644 Measured Total Depth: 10876 True Vertical Depth: 6007 End Pt. Location From Release, Unit or Property Line: 505

FOR COMMISSION USE ONLY
<div>Status: Accepted</div> <div>1138135</div>

API NO. 003-23278
OTC PROD.
UNIT NO. 003-222329

PLEASE TYPE OR USE BLACK INK ONLY
NOTE:
Attach copy of original 1002A if recompletion or reentry.

OKLAHOMA CORPORATION COMMISSION
Oil & Gas Conservation Division
Post Office Box 52000
Oklahoma City, Oklahoma 73152-2000
Rule 165:10-3-25

RECEIVED Form 1002/ Rev. 2009

NOV 13 2017

OKLAHOMA CORPORATION COMMISSION

☒ ORIGINAL
☐ AMENDED
Reason Amended

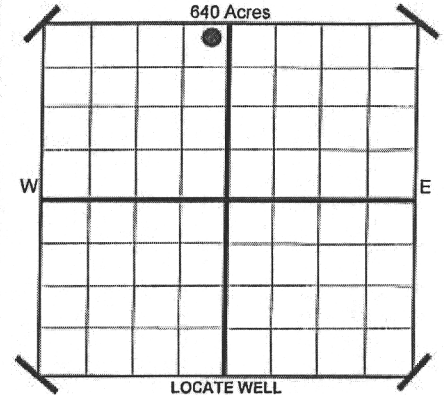
TYPE OF DRILLING OPERATION

☐ STRAIGHT HOLE ☐ DIRECTIONAL HOLE ☒ HORIZONTAL HOLE
If directional or horizontal, see reverse for bottom hole location.

COMPLETION REPORT

COUNTY	Alfalfa	SEC	11	TWP	25N	RGE	12W
LEASE NAME	Harvester 11-25-12		WELL NO	1H			
SHL	NE 1/4 NE 1/4 NE 1/4 NW 1/4		FNL	180			
ELEVATION	Derrick Fl 1,357		Ground	1,331			
OPERATOR NAME	CHESAPEAKE OPERATING, L.L.C.			OTC/OCC OPERATOR NO.	17441		
ADDRESS	P.O. BOX 18496						
CITY	OKLAHOMA CITY		STATE	OK		ZIP	73154

SPUD DATE	7/17/2017
DRLG FINISHED DATE	8/4/2017
DATE OF WELL COMPLETION	9/4/2017
1ST PROD DATE	9/13/2017
RECOMP DATE	
Longitude (if Known)	



COMPLETION TYPE

<input checked="" type="checkbox"/> SINGLE ZONE
<input type="checkbox"/> MULTIPLE ZONE
Application Date
COMMINGLED
Application Date
LOCATION
EXCEPTION ORDER NO.
INCREASED DENSITY ORDER NO.

CASING & CEMENT (Form 1002C must be attached)

TYPE	SIZE	WEIGHT	GRADE	FEET	PSI	SAX	TOP
CONDUCTOR							
SURFACE	16"	84#	J-55	477		445	Surface
INTERMEDIATE	10-3/4"	45.50#	J-55	1,233		370	Surface
PRODUCTION	7-5/8"	29.70#	P-110	6,219		375	3,088
LINER	4-1/2"	13.50#	P-110EC	6,060-10,876			uncemented
							10,876

PACKER @ BRAND & TYPE PLUG @ TYPE PLUG @ TYPE
PACKER @ BRAND & TYPE PLUG @ TYPE PLUG @ TYPE

COMPLETION & TEST DATA BY PRODUCING FORMATION

FORMATION	Mississippi Lime								
SPACING & SPACING	640								
ORDER NUMBER	158770								
CLASS: Oil, Gas, Dry, Inj. Disp, Comm Disp, Svc	Oil								
PERFORATED INTERVALS	open hole packer system								
ACID/VOLUME	10,000 gals acid	15% HCL							
FRACTURE TREATMENT (Fluids/Prop Amounts)	52,322 bbls fluids								

Minimum Gas Allowable (165:10-17-7)

Gas Purchaser/Measurer

Chesapeake Operating, L.L.C.

☒

OR

1st Sales Date

9/13/2017

INITIAL TEST DATA

INITIAL TEST DATE	10/24/2017								
OIL-BBL/DAY	352								
OIL-GRAVITY (API)	32								
GAS-MCF/DAY	772								
GAS-OIL RATIO CU FT/BBL	456 2193								
WATER-BBL/DAY	1,467								
PUMPING OR FLOWING	Pumping								
INITIAL SHUT-IN PRESSURE									
CHOKE SIZE									
FLOW TUBING PRESSURE	151								

AS SUBMITTED

A record of the formations drilled through, and pertinent remarks are presented on the reverse. I declare that I have knowledge of the contents of this report and am authorized by my organization to make this report, which was prepared by me or under my supervision and direction, with the data and facts stated herein to be true, correct, and complete to the best of my knowledge and belief.

SIGNATURE	JUANITA COOPER - SR. REGULATORY ANALYST	DATE	11/9/2017	PHONE NUMBER	405-848-8000
ADDRESS	OKLAHOMA CITY	STATE	OK	ZIP	73154
		EMAIL ADDRESS	juanita.cooper@chk.com		

PLEASE TYPE OR USE BLACK INK ONLY
FORMATION RECORD

Give formation names and tops, if available, or descriptions and thickness of formations drilled through. Show intervals cored or drillstem tested.

LEASE NAME Harvester 11-25-12

WELL NO. 1H

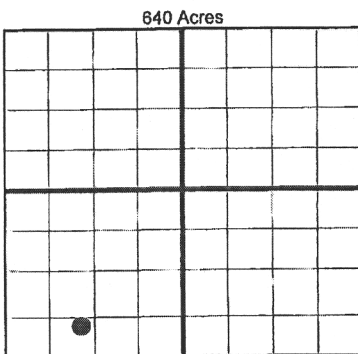
NAMES OF FORMATIONS	TOP
Mississippi Lime	6,232

FOR COMMISSION USE ONLY	
ITD on file <input type="checkbox"/> YES <input type="checkbox"/> NO	
APPROVED _____	DISAPPROVED _____
2) Reject Codes	

Were open hole logs run?	yes	<input checked="" type="checkbox"/> no
Date last log was run	N/A	
Was CO ₂ encountered?	yes	<input checked="" type="checkbox"/> no at what depths?
Was H ₂ S encountered?	yes	<input checked="" type="checkbox"/> no at what depths?
Were unusual drilling circumstances encountered?	yes <input type="checkbox"/> no <input checked="" type="checkbox"/>	
If yes, briefly explain.		

Other remarks:

OCC - This well is an open hole completion from bottom of the 7 5/8" casing at 6219' to terminus at 10876'. The 4 1/2" liner is not cemented.

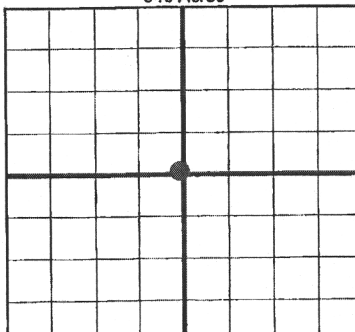


If more than three drainholes are proposed, attach a separate sheet indicating the necessary information.

Direction must be stated in degrees azimuth. Please note, the horizontal drainhole and its end point must be located within the boundaries of the lease or spacing unit.

Directional surveys are required for all drainholes and directional wells.

640 Acres



BOTTOM HOLE LOCATION FOR DIRECTIONAL HOLE

SEC	TWP	RGE	COUNTY		
Spot Location				1/4	1/4
Measured Total Depth				True Vertical Depth	BHL From Lease, Unit, or Property Line:

BOTTOM HOLE LOCATION FOR HORIZONTAL HOLE: (LATERALS)

LATERAL #1					
SEC	TWP	RGE	COUNTY	Alfalfa	
11	25N	12W			
Spot Location				NE 1/4	SE 1/4
Depth of Deviation				5,200	Radius of Turn
Measured Total Depth				10,876	True Vertical Depth
				6,007	BHL From Lease, Unit, or Property Line:
				505	

LATERAL #2

SEC	TWP	RGE	COUNTY		
Spot Location				1/4	1/4
Depth of Deviation				5,200	Radius of Turn
Measured Total Depth				10,876	True Vertical Depth
				6,007	BHL From Lease, Unit, or Property Line:
				505	

LATERAL #3

SEC	TWP	RGE	COUNTY		
Spot Location				1/4	1/4
Depth of Deviation				5,200	Radius of Turn
Measured Total Depth				10,876	True Vertical Depth
				6,007	BHL From Lease, Unit, or Property Line:
				505	

TOPOGRAPHIC LAND SURVEYORS OF OKLAHOMA

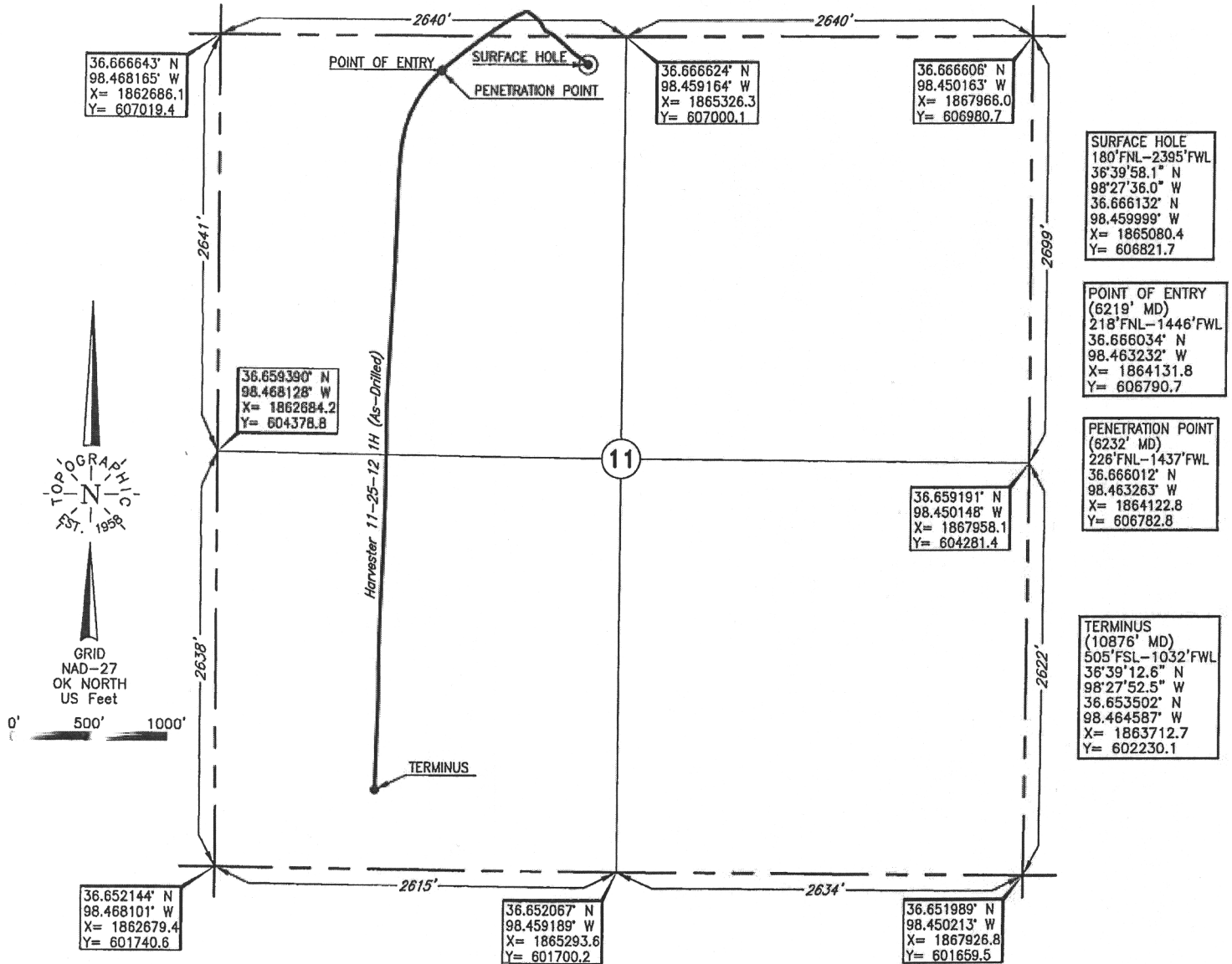
6709 NORTH CLASSEN BLVD., OKLA. CITY, OKLA. 73116 * LOCAL (405) 843-4847 * OUT OF STATE (800) 654-3219
Certificate of Authorization No. 1293 LS

ALFALFA

County, Oklahoma

REVISION "A"
11-02-2017

180'FNL - 2395'FWL Section 11 Township 25N Range 12W I.M.



Operator: CHESAPEAKE OPERATING, L.L.C.

Lease Name: HARVESTER 11-25-12

Well No.: 1H

ELEVATION:

1331' Gr. at Level Pad

Topography & Vegetation Loc. fell on level pad

Good Drill Site? Yes

Reference Stakes or Alternate Location
Stakes Set None

Best Accessibility to Location From North of county road

Distance & Direction
from Hwy Jct or Town From Carmen, OK, go ±6.0 mi. North to the NW Cor. of Sec.

11-T25N-R12W

This information was gathered with a GPS receiver with ±1 foot Horiz./Vert. accuracy.

DATUM: NAD-27
LAT: 36°39'58.1"N
LONG: 98°27'36.0"W
LAT: 36.666132° N
LONG: 98.459999° W
STATE PLANE
COORDINATES: (US Feet)
ZONE: OK NORTH
X: 1865080.4
Y: 606821.7

Invoice # 282275 Date of Drawing: Oct. 05, 2017
275485 Date Staked: May 03, 2017

JP

FINAL AS-DRILLED PLAT

AS-DRILLED INFORMATION
FURNISHED BY CHESAPEAKE OPERATING