

Oklahoma Corporation Commission
Oil & Gas Conservation Division
Post Office Box 52000
Oklahoma City, Oklahoma 73152-2000
Rule 165: 10-3-25

Form 1002A

API No.: 35093211400001

Completion Report

Spud Date: February 01, 1976

OTC Prod. Unit No.: 093-050349

Drilling Finished Date: February 24, 1976

Amended

1st Prod Date: April 03, 1976

Amend Reason: SEE REMARKS

Completion Date: April 05, 1976

Recomplete Date: August 30, 2001

Drill Type: STRAIGHT HOLE

Well Name: FULLER 1-25

Purchaser/Measurer:

Location: MAJOR 25 20N 10W
C SW NE
660 FSL 660 FWL of 1/4 SEC
Derrick Elevation: 1139 Ground Elevation: 1130

First Sales Date:

Operator: CHESAPEAKE OPERATING LLC 17441
PO BOX 18496
6100 N WESTERN AVE
OKLAHOMA CITY, OK 73154-0496

Completion Type		Location Exception		Increased Density	
	Single Zone	Order No		Order No	
	Multiple Zone	There are no Location Exception records to display.		There are no Increased Density records to display.	
X	Commingled				

Casing and Cement							
Type	Size	Weight	Grade	Feet	PSI	SAX	Top of CMT
SURFACE	9	40	K-55	510		325	SURFACE
PRODUCTION	5 1/2	15.5 / 17	K-55	8434		500	6575

Liner								
Type	Size	Weight	Grade	Length	PSI	SAX	Top Depth	Bottom Depth
There are no Liner records to display.								

Total Depth: 8435

Packer		Plug	
Depth	Brand & Type	Depth	Plug Type
There are no Packer records to display.		7400	CIBP

Initial Test Data										
Test Date	Formation	Oil BBL/Day	Oil-Gravity (API)	Gas MCF/Day	Gas-Oil Ratio Cu FT/BBL	Water BBL/Day	Pumpin or Flowing	Initial Shut-In Pressure	Choke Size	Flow Tubing Pressure
Jun 22, 2015	OSWEGO-CHEROKEE-MANNING			5			ARTIFICIAL LIFT			4

Completion and Test Data by Producing Formation			
Formation Name: OSWEGO		Code: 404OSWG	Class: GAS
Spacing Orders		Perforated Intervals	
Order No	Unit Size	From	To
122170	160	6670	6700
Acid Volumes		Fracture Treatments	
There are no Acid Volume records to display.		There are no Fracture Treatments records to display.	
Formation Name: CHEROKEE		Code: 404CHRK	Class: GAS
Spacing Orders		Perforated Intervals	
Order No	Unit Size	From	To
284917	160	7013	7020
Acid Volumes		Fracture Treatments	
2,000 GALLONS ACID		There are no Fracture Treatments records to display.	
Formation Name: MANNING		Code: 354MNNG	Class: GAS
Spacing Orders		Perforated Intervals	
Order No	Unit Size	From	To
122170	160	7212	7276
Acid Volumes		Fracture Treatments	
There are no Acid Volume records to display.		There are no Fracture Treatments records to display.	
Formation Name: MISSISSIPPI		Code: 351MISS	Class: DRY
Spacing Orders		Perforated Intervals	
Order No	Unit Size	From	To
122170	160	7514	7876
Acid Volumes		Fracture Treatments	
There are no Acid Volume records to display.		There are no Fracture Treatments records to display.	
Formation Name: OSWEGO-CHEROKEE-MANNING		Code:	Class: GAS

Formation	Top
SEE ORIGINAL 1002A	0

Were open hole logs run? Yes

Date last log run: February 25, 1976

Were unusual drilling circumstances encountered? No

Explanation:

Other Remarks
REPORTING PREVIOUS OPERATOR'S 1993 (ADDED FORMATION) AND 2001 (ADDED CIBP) RECOMPLETIONS

FOR COMMISSION USE ONLY	
Status: Accepted	1137754

API NO. 093-21140
 OTC PROD.
 UNIT NO. 093-050349

PLEASE TYPE OR USE BLACK INK ONLY
 NOTE:
 Attach copy of original 1002A if recompletion or reentry.

OKLAHOMA CORPORATION COMMISSION
 Oil & Gas Conservation Division
 Post Office Box 52000
 Oklahoma City, Oklahoma 73152-2000
 Rule 165:10-3-25

RECEIVED

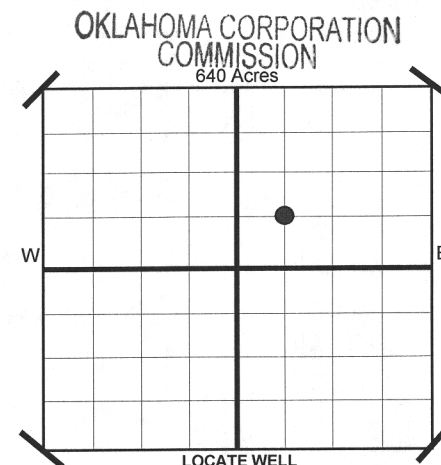
SEP 29 2017

☐ ORIGINAL
☒ AMENDED
 Reason Amended See remarks

TYPE OF DRILLING OPERATION
☒ STRAIGHT HOLE ☐ DIRECTIONAL HOLE ☐ HORIZONTAL HOLE
☐ SERVICE WELL
 If directional or horizontal, see reverse for bottom hole location.

COMPLETION REPORT

COUNTY	Major	SEC 25	TWP 20N	RGE 10W
LEASE NAME	Fuller	WELL NO	1-25	
SHL	1/4 C 1/4 SW 1/4 NE 1/4	FSL	660	FWL OF 1/4 SEC 660
ELEVATION	Derrick Fl 1,139 Ground 1,130	Latitude (if Known)		
OPERATOR NAME	CHESAPEAKE OPERATING, L.L.C.		OTC/OCC OPERATOR NO. 17441	
ADDRESS	P.O. BOX 18496			
CITY	OKLAHOMA CITY	STATE	OK	ZIP 73154



COMPLETION TYPE

<input type="checkbox"/>	SINGLE ZONE
<input type="checkbox"/>	MULTIPLE ZONE
<input checked="" type="checkbox"/>	COMINGLED
	Application Date 9/28/2017
	LOCATION EXCEPTION ORDER NO. N/A
	INCREASED DENSITY ORDER NO. N/A

CASING & CEMENT (Form 1002C must be attached)

TYPE	SIZE	WEIGHT	GRADE	FEET	PSI	SAX	TOP
CONDUCTOR							
SURFACE	9"	40#	K-55	510		325	Surface
INTERMEDIATE							
PRODUCTION	5-1/2"	15.5/17#	K-55	8,434		500	6,575
LINER							
							8,435

PACKER @ BRAND & TYPE PLUG @ TYPE PLUG @ 7,400 TYPE CIBP
 PACKER @ BRAND & TYPE PLUG @ TYPE PLUG @ TYPE

TOTAL DEPTH

COMPLETION & TEST DATA BY PRODUCING FORMATION

FORMATION	Oswego	Cherokee	Manning	Mississippi	No Frac
SPACING & SPACING	160	160	160	160	
ORDER NUMBER	122170	284917	122170	122170	
CLASS: Oil, Gas, Dry, Inj. Disp, Comm Disp, Svc	Gas	Gas	Gas	below bridge plug	
PERFORATED INTERVALS	6,670 - 6,700	7,013 - 7,020	7,212 - 7,276	7,514 - 7,876	
ACID/VOLUME		2,000 gals acid			
FRACTURE TREATMENT (Fluids/Prop Amounts)					

Minimum Gas Allowable (165:10-17-7)

Gas Purchaser/Measurer

1st Sales Date

INITIAL TEST DATA

INITIAL TEST DATE	6/22/2015
OIL-BBL/DAY	0
OIL-GRAVITY (API)	
GAS-MCF/DAY	5
GAS-OIL RATIO CU FT/BBL	
WATER-BBL/DAY	0
PUMPING OR FLOWING	Artificial Lift
INITIAL SHUT-IN PRESSURE	
CHOKE SIZE	
FLOW TUBING PRESSURE	4

AS SUBMITTED

A record of the formations drilled through, and pertinent remarks are presented on the reverse. I declare that I have knowledge of the contents of this report and am authorized by my organization to make this report, which was prepared by me or under my supervision and direction, with the data and facts stated herein to be true, correct, and complete to the best of my knowledge and belief.

Juanita Cooper SIGNATURE
 P.O. BOX 18496 ADDRESS
 OKLAHOMA CITY CITY
 OK STATE
 73154 ZIP
 9/28/2017 DATE
 405-848-8000 PHONE NUMBER
 juanita.cooper@chk.com EMAIL ADDRESS

PLEASE TYPE OR USE BLACK INK ONLY
FORMATION RECORD

Give formation names and tops, if available, or descriptions and thickness of formations drilled through. Show intervals cored or drillstem tested.

LEASE NAME Fuller

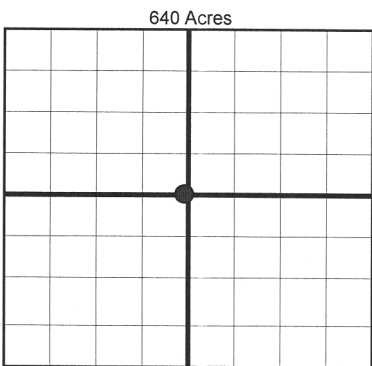
WELL NO. 1-25

NAMES OF FORMATIONS	TOP
See original 1002A	

FOR COMMISSION USE ONLY	
ITD on file <input type="checkbox"/> YES <input type="checkbox"/> NO	
APPROVED _____	DISAPPROVED _____
2) Reject Codes	

Were open hole logs run?	<u>X</u> yes	no
Date Last log was run	<u>2/25/1976</u>	
Was CO ₂ encountered?	yes	<u>X</u> no at what depths?
Was H ₂ S encountered?	yes	<u>X</u> no at what depths?
Were unusual drilling circumstances encountered?	yes	<u>X</u> no
If yes, briefly explain.		

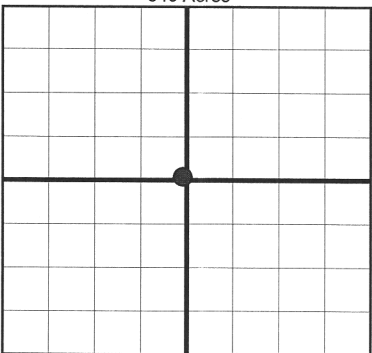
Other remarks: Reporting previous operator's 1993 (added formation) and 2001 (added CIBP) recompletions



If more than three drainholes are proposed, attach a separate sheet indicating the necessary information.

Direction must be stated in degrees azimuth. Please note, the horizontal drainhole and its end point must be located within the boundaries of the lease or spacing unit.

Directional surveys are required for all drainholes and directional wells.



BOTTOM HOLE LOCATION FOR DIRECTIONAL HOLE

SEC	TWP	RGE	COUNTY
Spot Location			
1/4	1/4	1/4	1/4
Measured Total Depth		True Vertical Depth	Feet From 1/4 Sec Lines FSL FWL
BHL From Lease, Unit, or Property Line:			

BOTTOM HOLE LOCATION FOR HORIZONTAL HOLE: (LATERALS)

SEC	TWP	RGE	COUNTY
Spot Location			
1/4	1/4	1/4	1/4
Depth of Deviation		Radius of Turn	Direction Total Length
Measured Total Depth		True Vertical Depth	BHL From Lease, Unit, or Property Line:

LATERAL #2

SEC	TWP	RGE	COUNTY
Spot Location			
1/4	1/4	1/4	1/4
Depth of Deviation		Radius of Turn	Direction Total Length
Measured Total Depth		True Vertical Depth	BHL From Lease, Unit, or Property Line:

LATERAL #3

SEC	TWP	RGE	COUNTY
Spot Location			
1/4	1/4	1/4	1/4
Depth of Deviation		Radius of Turn	Direction Total Length
Measured Total Depth		True Vertical Depth	BHL From Lease, Unit, or Property Line: