

Oklahoma Corporation Commission
Oil & Gas Conservation Division
Post Office Box 52000
Oklahoma City, Oklahoma 73152-2000
Rule 165: 10-3-25

Form 1002A

API No.: 35045236580002

Completion Report

Spud Date: July 18, 2017

OTC Prod. Unit No.: 045-222503

Drilling Finished Date: August 06, 2017

1st Prod Date: November 09, 2017

Completion Date: November 08, 2017

Drill Type: HORIZONTAL HOLE

Min Gas Allowable: Yes

Well Name: TEDDY 1-5H

Purchaser/Measurer: DCP ASSETS HOLDING LP

Location: ELLIS 12 17N 24W
NW NE NE NW
300 FNL 2305 FWL of 1/4 SEC
Derrick Elevation: 0 Ground Elevation: 2400

First Sales Date: 11/09/2017

Operator: EOG RESOURCES INC 16231

3817 NW EXPRESSWAY STE 500
OKLAHOMA CITY, OK 73112-1483

Completion Type	
X	Single Zone
	Multiple Zone
	Commingled

Location Exception	
Order No	
664207	

Increased Density	
Order No	
663729	

Casing and Cement							
Type	Size	Weight	Grade	Feet	PSI	SAX	Top of CMT
SURFACE	10 3/4	40.5	J-55	1970		1210	SURFACE
PRODUCTION	5 1/2	20 / 23	HCP-110	13081		1130	6993

Liner								
Type	Size	Weight	Grade	Length	PSI	SAX	Top Depth	Bottom Depth
There are no Liner records to display.								

Total Depth: 13323

Packer	
Depth	Brand & Type
There are no Packer records to display.	

Plug	
Depth	Plug Type
There are no Plug records to display.	

Initial Test Data										
Test Date	Formation	Oil BBL/Day	Oil-Gravity (API)	Gas MCF/Day	Gas-Oil Ratio Cu FT/BBL	Water BBL/Day	Pumpin or Flowing	Initial Shut-In Pressure	Choke Size	Flow Tubing Pressure
Nov 14, 2017	MARMATON	236	41.9	159	673	1164	FLOWING	440	64/64	1349

Completion and Test Data by Producing Formation			
Formation Name: MARMATON		Code: 404MRMN	Class: OIL
Spacing Orders		Perforated Intervals	
Order No	Unit Size	From	To
579335	640	9830	13015
Acid Volumes		Fracture Treatments	
8.5M GALLONS HCL ACID		5.9MM POUNDS PROPPANT, 6.1MM GALLONS SLICKWATER	

Formation	Top
MARMATON	9650

Were open hole logs run? No

Date last log run:

Were unusual drilling circumstances encountered? No

Explanation:

Other Remarks
OCC - THIS DOCUMENT IS ACCEPTED BASED ON THE DATA SUBMITTED THE FINAL LOCATION EXCEPTION HAS NOT BEEN SUBMITTED.

Lateral Holes
Sec: 1 TWP: 17N RGE: 24W County: ELLIS
SW SE NE NW
1536 FNL 2123 FWL of 1/4 SEC
Depth of Deviation: 8965 Radius of Turn: 983 Direction: 355 Total Length: 4048
Measured Total Depth: 13323 True Vertical Depth: 9597 End Pt. Location From Release, Unit or Property Line: 1536

FOR COMMISSION USE ONLY	
Status: Accepted	1138295

API NO. 045-23658
OTC PROD. 045-222503
UNIT NO.

PLEASE TYPE OR USE BLACK INK ONLY
NOTE:

Attach copy of original 1002A
if recompletion or reentry.

OKLAHOMA CORPORATION COMMISSION
Oil & Gas Conservation Division
Post Office Box 52000
Oklahoma City, Oklahoma 73152-2000
Rule 165:10-3-25

RECEIVED

Form 1002A
Rev. 2009

DEC 07 2017

OKLAHOMA CORPORATION
COMMISSION

☒ ORIGINAL
☐ AMENDED (Reason)

COMPLETION REPORT

TYPE OF DRILLING OPERATION

☐ STRAIGHT HOLE ☐ DIRECTIONAL HOLE ☒ HORIZONTAL HOLE
☐ SERVICE WELL

If directional or horizontal, see reverse for bottom hole location.

COUNTY	Ellis	SEC	12	TWP	17N	RGE	24W
LEASE NAME	Teddy			WELL NO.	1 #5H		
NW 1/4 NE 1/4 NE 1/4 NW 1/4	FNL OF 1/4 SEC 300			FWL OF 1/4 SEC	2305		
ELEVATION	Ground 2400			Latitude (if known)	Longitude (if known)		
OPERATOR NAME	EOG Resources, Inc.			OTC/OCC OPERATOR NO.	16231		
ADDRESS	3817 NW Expressway, Suite 500						
CITY	Oklahoma City			STATE	OK	ZIP	73112

SPUD DATE 7/18/2017

DRLG FINISHED DATE 8/6/17

DATE OF WELL COMPLETION 11/8/17

1st PROD DATE 11/9/17

RECOMP DATE

640 Acres									
X									
W E									
LOCATE WELL									

COMPLETION TYPE

<input checked="" type="checkbox"/> SINGLE ZONE
<input type="checkbox"/> MULTIPLE ZONE
Application Date
COMINGLED
Application Date
LOCATION
EXCEPTION ORDER
INCREASED DENSITY
ORDER NO.

CASING & CEMENT (Form 1002C must be attached)

TYPE	SIZE	WEIGHT	GRADE	FEET	PSI	SAX	TOP OF CMT
CONDUCTOR							
SURFACE	10 3/4	40.5#	J-55	1970		1210	SURFACE
INTERMEDIATE							
PRODUCTION	5 1/2	20/23#	HCP-110	13,081		1130	6993
LINER							
TOTAL DEPTH							13,323

PACKER @ _____ BRAND & TYPE _____ PLUG @ _____ TYPE _____ PLUG @ _____ TYPE _____
PACKER @ _____ BRAND & TYPE _____ PLUG @ _____ TYPE _____ PLUG @ _____ TYPE _____

COMPLETION & TEST DATA BY PRODUCING FORMATION

FORMATION	MARMATON
SPACING & SPACING ORDER NUMBER	579335 / 640
CLASS: Oil, Gas, Dry, Inj, Disp, Comm Disp, Svc	OIL
PERFORATED INTERVALS	9830-13,015
ACID/VOLUME	NO
FRACTURE TREATMENT (Fluids/Prop Amounts)	5.9MM # PROPPANT 8.5M G HCL ACID 6.1MM G-SLK-WTR

Min Gas Allowable (165:10-17-7)

☒

OR

Oil Allowable (165:10-13-3)

Gas Purchaser/Measurer

First Sales Date

DCP Assets Holding LP

11/9/2017

INITIAL TEST DATA

INITIAL TEST DATE	11/14/2017
OIL-BBL/DAY	236
OIL-GRAVITY (API)	41.9
GAS-MCF/DAY	159
GAS-OIL RATIO CU FT/BBL	2809 673
WATER-BBL/DAY	1164
PUMPING OR FLOWING	FLOWING
INITIAL SHUT-IN PRESSURE	440
CHOKE SIZE	64/64
FLOW TUBING PRESSURE	1349

AS SUBMITTED

A record of the formations drilled through, and pertinent remarks are presented on the reverse. I declare that I have knowledge of the contents of this report and am authorized by my organization to make this report, which was prepared by me or under my supervision and direction, with the data and facts stated herein to be true, correct, and complete to the best of my knowledge and belief.

Melissa Sturm

Melissa Sturm

405-246-3100

SIGNATURE

NAME (PRINT OR TYPE)

DATE

PHONE NUMBER

3817 NW Expressway, Suite 500

Oklahoma City

OK

73112

melissa_sturm@eogresources.com

ADDRESS

CITY

STATE

ZIP

EMAIL ADDRESS

PLEASE TYPE OR USE BLACK INK ONLY

FORMATION RECORD

Give formation names and tops, if available, or descriptions and thickness of formations drilled through. Show intervals cored or drillstem tested.

LEASE NAME

Teddy

WELL NO. 1 #5H

NAMES OF FORMATIONS	TOP
MARMATON	9,650

FOR COMMISSION USE ONLY

ITD on file ☐ YES ☐ NO

APPROVED _____ DISAPPROVED _____

2) Reject Codes

Were open hole logs run? _____ yes ☒ no

Date Last log was run _____

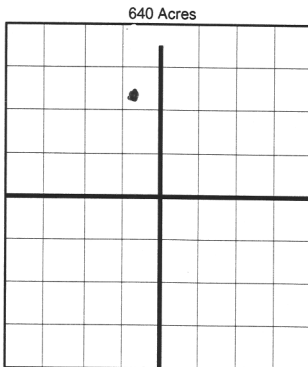
Was CO₂ encountered? _____ yes ☒ no at what depths? _____

Was H₂S encountered? _____ yes ☒ no at what depths? _____

Were unusual drilling circumstances encountered? _____ yes ☒ no

If yes, briefly explain below: _____

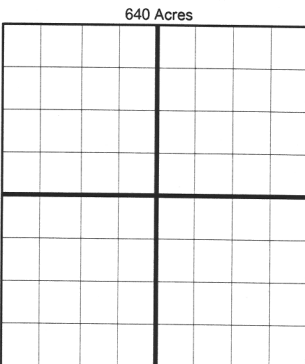
Other remarks:



If more than three drainholes are proposed, attach a separate sheet indicating the necessary information.

Direction must be stated in degrees azimuth.
Please note, the horizontal drainhole and its end point must be located within the boundaries of the lease or spacing unit.

Directional surveys are required for all drainholes and directional wells.



BOTTOM HOLE LOCATION FOR DIRECTIONAL HOLE

SEC	TWP	RGE	COUNTY
Spot Location	1/4	1/4	1/4
Measured Total Depth	True Vertical Depth	BHL From Lease, Unit, or Property Line:	

BOTTOM HOLE LOCATION FOR HORIZONTAL HOLE: (LATERALS)

LATERAL #1

SEC	TWP	RGE	COUNTY
1	17N	24W	Ellis
Spot Location	1/4	1/4	1/4
Measured Total Depth	True Vertical Depth	BHL From Lease, Unit, or Property Line:	

Feet From 1/4 Sec Lines FSL FWL

Direction 355 Total Length 4048

1536 165 2123 2055

165 1536

LATERAL #2

SEC	TWP	RGE	COUNTY
Spot Location	1/4	1/4	1/4
Measured Total Depth	True Vertical Depth	BHL From Lease, Unit, or Property Line:	

Feet From 1/4 Sec Lines FSL FWL

Direction Total Length

LATERAL #3

SEC	TWP	RGE	COUNTY
Spot Location	1/4	1/4	1/4
Measured Total Depth	True Vertical Depth	BHL From Lease, Unit, or Property Line:	

Feet From 1/4 Sec Lines FSL FWL

Direction Total Length