

Oklahoma Corporation Commission  
Oil & Gas Conservation Division  
Post Office Box 52000  
Oklahoma City, Oklahoma 73152-2000  
Rule 165: 10-3-25

Form 1002A

API No.: 35043235050000

**Completion Report**

Spud Date: May 09, 2017

OTC Prod. Unit No.: 043-219187

Drilling Finished Date: June 17, 2017

1st Prod Date: August 27, 2017

Completion Date: August 19, 2017

**Drill Type:** HORIZONTAL HOLE

Well Name: FOALE 31-19-17 1H

Purchaser/Measurer: ENABLE

Location: DEWEY 30 19N 17W  
SE SW SW SW  
235 FSL 590 FWL of 1/4 SEC  
Latitude: 36.0872707 Longitude: -99.05964458  
Derrick Elevation: 1987 Ground Elevation: 1962

First Sales Date: 08/27/2017

Operator: TAPSTONE ENERGY LLC 23467

100 E MAIN ST  
OKLAHOMA CITY, OK 73104-2509

Completion Type	
X	Single Zone
	Multiple Zone
	Commingled

Location Exception	
Order No	
663701	

Increased Density	
Order No	
There are no Increased Density records to display.	

Casing and Cement							
Type	Size	Weight	Grade	Feet	PSI	SAX	Top of CMT
SURFACE	20	94	J-55	414	440	855	SURFACE
INTERMEDIATE	13 3/8	54.5	J-55	1476	900	1290	SURFACE
INTERMEDIATE	9 5/8	40	P-110	11240	1800	610	6800
PRODUCTION	5 1/2	20	P-110	17244	8000	1605	9051

Liner								
Type	Size	Weight	Grade	Length	PSI	SAX	Top Depth	Bottom Depth
There are no Liner records to display.								

**Total Depth: 17244**

Packer	
Depth	Brand & Type
11905	AS-1X

Plug	
Depth	Plug Type
There are no Plug records to display.	

Initial Test Data
-------------------

Test Date	Formation	Oil BBL/Day	Oil-Gravity (API)	Gas MCF/Day	Gas-Oil Ratio Cu FT/BBL	Water BBL/Day	Pumpin or Flowing	Initial Shut-In Pressure	Choke Size	Flow Tubing Pressure
Oct 29, 2017	MISSISSIPPIAN	261	50	6650	25479	1038	FLOWING	1016	40/64	1109

Completion and Test Data by Producing Formation

Formation Name: MISSISSIPPIAN		Code: 359MSSP		Class: GAS	
Spacing Orders		Perforated Intervals			
Order No	Unit Size	From	To		
661933	640	12395	17244		
Acid Volumes		Fracture Treatments			
118,860 GALLONS 15% HCL		257,828 BARRELS, 5,896,611 POUNDS PROPPANT			

Formation	Top
BASE HEEBNER SHALE	6706
TONKAWA	7150
COTTAGE GROVE	7605
HOGSHOOTER	7946
OSWEGO LIMESTONE	8390
ATOKA	9110
CHESTER	9872
UPPER MERAMEC	11162

Were open hole logs run? No  
Date last log run:  
  
Were unusual drilling circumstances encountered? No  
Explanation:

Other Remarks
OCC - THIS DOCUMENT IS ACCEPTED BASED ON THE DATA SUBMITTED THE FINAL LOCATION EXCEPTION HAS NOT BEEN ISSUED.

Lateral Holes
<p>Sec: 31 TWP: 19N RGE: 17W County: DEWEY</p> <p>SE SW SW SW</p> <p>167 FSL 655 FWL of 1/4 SEC</p> <p>Depth of Deviation: 11425 Radius of Turn: 1448 Direction: 178 Total Length: 4371</p> <p>Measured Total Depth: 17244 True Vertical Depth: 12018 End Pt. Location From Release, Unit or Property Line: 167</p>

FOR COMMISSION USE ONLY
<div>Status: Accepted</div> <div>1138229</div>

API NO. 3504323505  
OTC PROD. UNIT NO. 043219187

PLEASE TYPE OR USE BLACK INK ONLY  
NOTE:

Attach copy of original 1002A  
if recompletion or reentry.

OKLAHOMA CORPORATION COMMISSION  
Oil & Gas Conservation Division  
Post Office Box 52000  
Oklahoma City, Oklahoma 73152-2000  
Rule 165:10-3-25

RECEIVED

NOV 20 2017

OKLAHOMA CORPORATION  
COMMISSION

640 Acres

☒ ORIGINAL  
☐ AMENDED (Reason)

TYPE OF DRILLING OPERATION

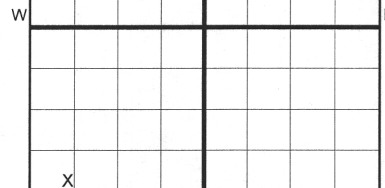
☐ STRAIGHT HOLE ☐ DIRECTIONAL HOLE ☒ HORIZONTAL HOLE  
SERVICE WELL

If directional or horizontal, see reverse for bottom hole location.

COUNTY	DEWEY	SEC	30	TWP	19N	RGE	17W
LEASE NAME	FOALE 31-19-17			WELL NO.	1H		
SE 1/4 SW 1/4 SW 1/4 SW 1/4	FSL OF 1/4 SEC	235'	FWL OF 1/4 SEC	590'	RECOMP DATE		
ELEVATION Derrick	1987'	Ground	1962'	Latitude (if known)	36.0872707	Longitude (if known)	-99.05964458
OPERATOR NAME	Tapstone Energy, LLC			OTC/OCC OPERATOR NO.	23467		
ADDRESS	PO Box 1608						
CITY	Oklahoma City		STATE	OK	ZIP	73101-1608	

COMPLETION REPORT

SPUD DATE 5/9/2017  
DRLG FINISHED DATE 6/17/2017  
DATE OF WELL COMPLETION 8/19/2017  
1st PROD DATE 8/27/2017



LOCATE WELL

COMPLETION TYPE

SINGLE ZONE	X
MULTIPLE ZONE	
Application Date	
COMMINGLED	
Application Date	
LOCATION	663701 - Interim
EXCEPTION ORDER	
INCREASED DENSITY	
ORDER NO.	

CASING & CEMENT (Form 1002C must be attached)

TYPE	SIZE	WEIGHT	GRADE	FEET	PSI	SAX	TOP OF CMT
CONDUCTOR	20"	94	J-55	414'	440	855	SURFACE
SURFACE	13 3/8"	54.5	J-55	1,476'	900	1290	SURFACE
INTERMEDIATE	9 5/8"	40	P-110	11,240'	1,800	610	6,800' EST
PRODUCTION	5 1/2"	20	P-110	17,244'	8,000	1605	9,051' EST
LINER							

PACKER @ 11,905' BRAND & TYPE AS-1X PLUG @ TYPE PLUG @ TYPE  
PACKER @ BRAND & TYPE PLUG @ TYPE PLUG @ TYPE

TOTAL DEPTH 17,244'

COMPLETION & TEST DATA BY PRODUCING FORMATION

FORMATION	MISSISSIPPIAN
SPACING & SPACING ORDER NUMBER	640 ac - 661933
CLASS: Oil, Gas, Dry, Inj, Disp, Comm Disp, Svc	GAS
PERFORATED INTERVALS	12,395'-17,244'
ACID/VOLUME	118,860 gal 15%HCL
	257,828 bbls
FRACTURE TREATMENT (Fluids/Prop Amounts)	5,896,611# PROP

Reported to Frac Focus

Min Gas Allowable (165:10-17-7)

Gas Purchaser/Measurer

ENABLE



OR  
Oil Allowable (165:10-13-3)

First Sales Date

8/27/2017

INITIAL TEST DATA

INITIAL TEST DATE	10/29/2017
OIL-BBL/DAY	261
OIL-GRAVITY (API)	50
GAS-MCF/DAY	6650
GAS-OIL RATIO CU FT/BBL	25,479
WATER-BBL/DAY	1038
PUMPING OR FLOWING	FLOWING
INITIAL SHUT-IN PRESSURE	Pending 1016
CHOKE SIZE	40/64
FLOW TUBING PRESSURE	1109

AS SUBMITTED

A record of the formations drilled through, and pertinent remarks are presented on the reverse. I declare that I have knowledge of the contents of this report and am authorized by my organization to make this report, which was prepared by me or under my supervision and direction, with the data and facts stated herein to be true, correct, and complete to the best of my knowledge and belief.

SIGNATURE PO Box 1608  
NAME (PRINT OR TYPE) Bryan Rother  
DATE 11/20/2017  
PHONE NUMBER 405-702-1600  
ADDRESS Oklahoma City  
CITY OK  
STATE ZIP 73101-1608  
EMAIL ADDRESS regulatory@tapstoneenergy.com

Give formation names and tops, if available, or descriptions and thickness of formations drilled through. Show intervals cored or drillstem tested.

FOR COMMISSION USE ONLY	
ITD on file	<input type="checkbox"/> YES <input type="checkbox"/> NO
APPROVED	DISAPPROVED
2) Reject Codes	

Were open hole logs run?           yes      X   no

Date Last log was run      \_\_\_\_\_

was CO<sub>2</sub> encountered?         yes      X   no    at what depths?    \_\_\_\_\_

was H<sub>2</sub>S encountered?         yes      X   no    at what depths?    \_\_\_\_\_

Were unusual drilling circumstances encountered?           yes      X   no

If yes, briefly explain below


A blank 10x10 grid with a bold cross dividing it into four 5x5 quadrants. The bottom-left quadrant contains an 'X' in the bottom-left cell.

Direction must be stated in degrees azimuth.  
Please note, the horizontal drainhole and its end point must be located within the boundaries of the lease or spacing unit.

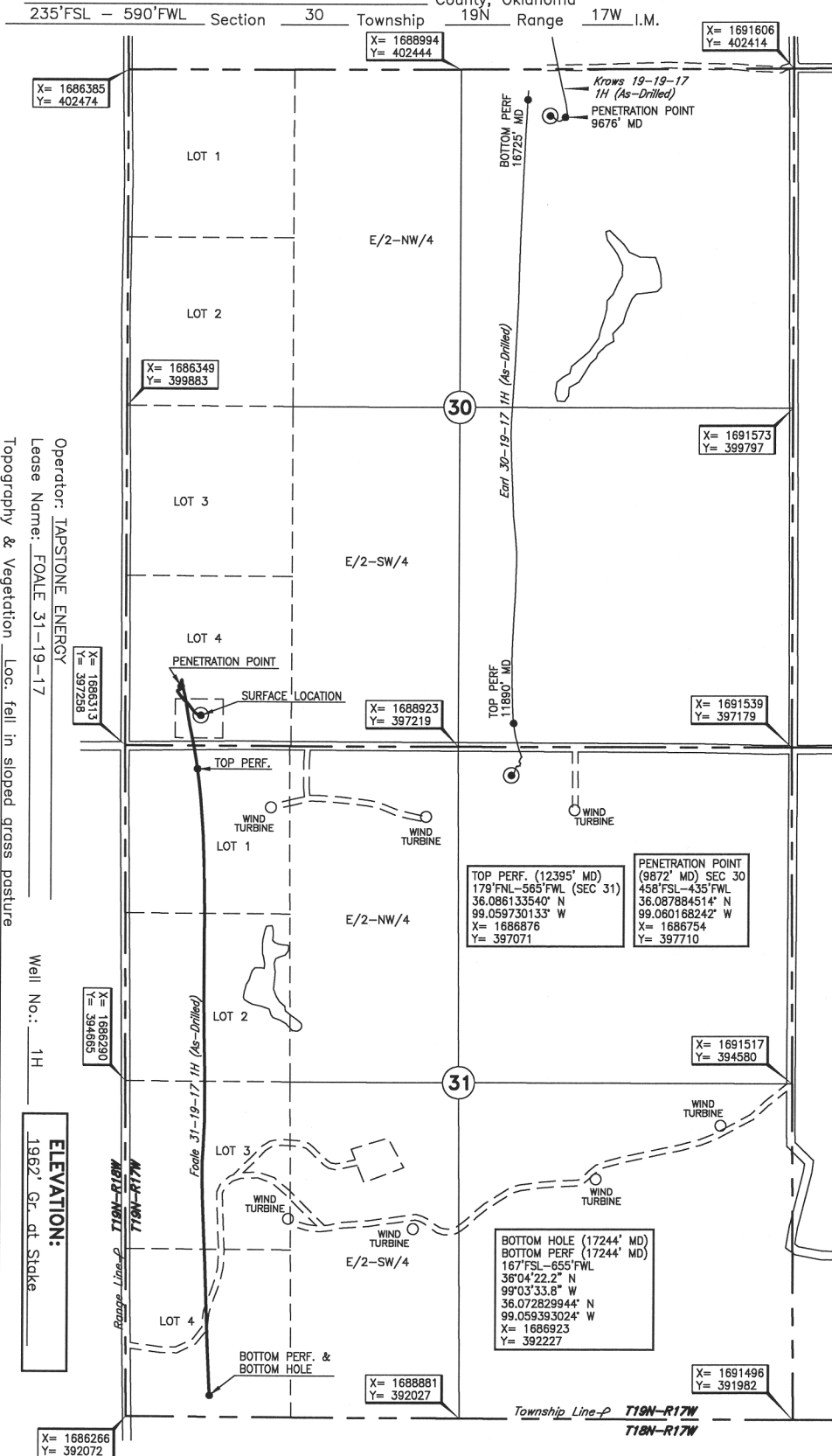
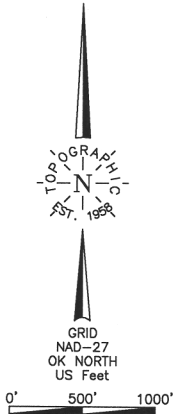
A blank 10x10 grid with a bold cross dividing it into four 5x5 quadrants.

SEC	TWP	RGE	COUNTY
Spot Location			
1/4	1/4	1/4	1/4
Measured Total Depth		True Vertical Depth	Feet From 1/4 Sec Lines
			FSL
		FWL	
BHL From Lease, Unit, or Property Line:			

LATERAL #1										
SEC 31	TWP 19N	RGE 17W	COUNTY DEWEY							
Spot Location							Feet From 1/4 Sec Lines		FSL 167'	FWL 655'
SE 1/4	SW 1/4	SW 1/4	SW 1/4							
Depth of Deviation 11,425'		Radius of Turn 1,448		Direction 178.31			Total Length 4,371'			
Measured Total Depth 17,244'		True Vertical Depth 12,018'		BHL From Lease, Unit, or Property Line: 167'						

SEC	TWP	RGE	COUNTY			
Spot Location				Feet From 1/4 Sec Lines	FSL	FWL
1/4	1/4	1/4	1/4			
Depth of Deviation		Radius of Turn	Direction	Total Length		
Measured Total Depth		True Vertical Depth	BHL From Lease, Unit, or Property Line:			

SEC	TWP	RGE	COUNTY			
Spot Location				Feet From 1/4 Sec Lines	FSL	FWL
1/4	1/4	1/4	1/4			
Depth of Deviation		Radius of Turn	Direction	Total Length		
Measured Total Depth		True Vertical Depth	BHL From Lease, Unit, or Property Line:			



Operator: **TAPSTONE ENERGY**  
 Lease Name: **FOALE 31-19-17**  
 Topography & Vegetation: **Loc. fell in sloped grass pasture**  
 Good Drill Site? **Yes**  
 Reference Stakes or Alternate Location: **Stakes Set None**  
 Best Accessibility to Location: **From South off county road**  
 Distance & Direction: **From Jct. US Hwy. 183 North and St. Hwy. 51 E-W, West of Seiling.**  
 OK, go ±6.0 mi. West on St. Hwy. 51, then ±4.0 mi. South to the SW Cor. of Sec. 30-T19N-R17W

Well No.: **1H**  
**ELEVATION:**  
**1962' Gr. at Stake**

DATUM: **NAD-27**  
 LAT: **36°05'14.2"N**  
 LONG: **99°03'34.7"W**  
 LAT: **36.087270682° N**  
 LONG: **99.059644575° W**  
 STATE PLANE  
 COORDINATES: (US Feet)  
 ZONE: **OK NORTH**  
 X: **1686906**  
 Y: **397484**

280156 Date of Drawing: **Aug. 18, 2017**  
 Invoice # **267222** Date Staked: **Nov. 03, 2016** JP

## FINAL AS-DRILLED PLAT

AS-DRILLED INFORMATION  
 FURNISHED BY TAPSTONE ENERGY