

Oklahoma Corporation Commission
Oil & Gas Conservation Division
Post Office Box 52000
Oklahoma City, Oklahoma 73152-2000
Rule 165: 10-3-25

Form 1002A

API No.: 35043235040000

Completion Report

Spud Date: March 26, 2017

OTC Prod. Unit No.: 043-218762

Drilling Finished Date: May 06, 2017

1st Prod Date: August 26, 2017

Completion Date: August 19, 2017

Drill Type: HORIZONTAL HOLE

Min Gas Allowable: Yes

Well Name: ROY 26-19-18 1H

Purchaser/Measurer: ENABLE

Location: DEWEY 35 19N 18W
NE NW NE NW
260 FNL 1860 FWL of 1/4 SEC
Latitude: 36.0859188 Longitude: -99.09080631
Derrick Elevation: 1926 Ground Elevation: 1901

First Sales Date: 08/26/2017

Operator: TAPSTONE ENERGY LLC 23467

100 E MAIN ST
OKLAHOMA CITY, OK 73104-2509

Completion Type		Location Exception		Increased Density	
X	Single Zone	Order No		Order No	
	Multiple Zone	664184		There are no Increased Density records to display.	
	Commingled				

Casing and Cement							
Type	Size	Weight	Grade	Feet	PSI	SAX	Top of CMT
SURFACE	13 3/8	54.5	J-55	1490	2000	1268	SURFACE
INTERMEDIATE	9 5/8	40	P-110	11455	2800	1061	6020
PRODUCTION	5 1/2	20	P-110	17020	3950	1550	8467

Liner								
Type	Size	Weight	Grade	Length	PSI	SAX	Top Depth	Bottom Depth
There are no Liner records to display.								

Total Depth: 17020

Packer	
Depth	Brand & Type
There are no Packer records to display.	

Plug	
Depth	Plug Type
There are no Plug records to display.	

Initial Test Data

Test Date	Formation	Oil BBL/Day	Oil-Gravity (API)	Gas MCF/Day	Gas-Oil Ratio Cu FT/BBL	Water BBL/Day	Pumpin or Flowing	Initial Shut-In Pressure	Choke Size	Flow Tubing Pressure
Sep 22, 2017	MISSISSIPPIAN	101	50	2860	28316	1653	FLOWING	1410	44	573

Completion and Test Data by Producing Formation

Formation Name: MISSISSIPPIAN		Code: 359MSSP		Class: GAS	
Spacing Orders		Perforated Intervals			
Order No	Unit Size	From	To		
662472	640	13693	17020		
Acid Volumes		Fracture Treatments			
48,468 GALLONS 15% HCL		176,605 BARRELS, 3,155,953 POUNDS PROPPANT			

Formation	Top
BASE HEEBNER SHALE	6592
TONKAWA	7060
COTTAGE GROVE	7510
HOGSHOOTER	7853
OSWEGO	8368
ATOKA	9072
CHESTER	9915
UPPER MERAMEC	11232

Were open hole logs run? Yes
Date last log run:

Were unusual drilling circumstances encountered? No
Explanation:

Other Remarks
OCC - THIS DOCUMENT IS ACCEPTED BASED ON THE DATA SUBMITTED THE FINAL LOCATION EXCEPTION HAS NOT BEEN ISSUED.

Lateral Holes
<p>Sec: 26 TWP: 19N RGE: 18W County: DEWEY</p> <p>NE NW NE NW</p> <p>264 FNL 1953 FWL of 1/4 SEC</p> <p>Depth of Deviation: 11443 Radius of Turn: 754 Direction: 2 Total Length: 4823</p> <p>Measured Total Depth: 17020 True Vertical Depth: 11770 End Pt. Location From Release, Unit or Property Line: 264</p>

FOR COMMISSION USE ONLY
<div>Status: Accepted</div> <div>1138230</div>

API NO. 3504323504
OTC PROD. UNIT NO. 043218762

PLEASE TYPE OR USE BLACK INK ONLY
NOTE:

Attach copy of original 1002A
if recompletion or reentry.

OKLAHOMA CORPORATION COMMISSION
Oil & Gas Conservation Division
Post Office Box 52000
Oklahoma City, Oklahoma 73152-2000
Rule 165:10-3-25

RECEIVED

NOV 20 2017

OKLAHOMA CORPORATION
COMMISSION

Form 1002A
Rev. 2009

☒ ORIGINAL
☐ AMENDED (Reason)

COMPLETION REPORT

TYPE OF DRILLING OPERATION

☐ STRAIGHT HOLE ☐ DIRECTIONAL HOLE ☒ HORIZONTAL HOLE
☐ SERVICE WELL

If directional or horizontal, see reverse for bottom hole location.

COUNTY	DEWEY	SEC	35	TWP	19N	RGE	18W	
LEASE NAME	ROY 26-19-18						WELL NO.	1H
NE 1/4 NW 1/4 NE 1/4 NW 1/4 FNL OF 1/4 SEC 260'						FWL OF 1/4 SEC 1860'		
ELEVATION	1926'	Ground	1901'	Latitude (if known)		36.0859188		
OPERATOR NAME						Tapstone Energy, LLC		
ADDRESS						PO Box 1608		
CITY				Oklahoma City	STATE	OK	ZIP 73101-1608	

SPUD DATE 3/26/17
DRLG FINISHED DATE 5/6/17
DATE OF WELL COMPLETION 8/19/17
1st PROD DATE 8/26/17
RECOMP DATE
Longitude (if known) -99.09080631

640 Acres

LOCATE WELL

COMPLETION TYPE

☒ SINGLE ZONE ☐ MULTIPLE ZONE
Application Date
COMINGLED
Application Date
LOCATION
EXCEPTION ORDER
INCREASED DENSITY
ORDER NO. 664184 - Interim

CASING & CEMENT (Form 1002C must be attached)

TYPE	SIZE	WEIGHT	GRADE	FEET	PSI	SAX	TOP OF CMT
CONDUCTOR							
SURFACE	13 3/8"	54.5	J-55	1490'	2000	1268	SURFACE
INTERMEDIATE	9 5/8"	40	P-110	11,455'	2,800	1061	6,020' EST
PRODUCTION	5 1/2"	20	P-110	17,020'	3,950	1550	8,467' EST
LINER							
TOTAL DEPTH							17,020'

PACKER @ _____ BRAND & TYPE _____ PLUG @ _____ TYPE _____ PLUG @ _____ TYPE _____
PACKER @ _____ BRAND & TYPE _____ PLUG @ _____ TYPE _____ PLUG @ _____ TYPE _____

COMPLETION & TEST DATA BY PRODUCING FORMATION

FORMATION	MISSISSIPPIAN
SPACING & SPACING ORDER NUMBER	640 ac - 662472
CLASS: Oil, Gas, Dry, Inj, Disp, Comm Disp, Svc	GAS
PERFORATED INTERVALS	13,693'-17,020'
ACID/VOLUME	48,468 gal 15%HCL
FRACTURE TREATMENT (Fluids/Prop Amounts)	176,605 bbls 3,155,953# PROP

Reported
to Eric Fellers

Min Gas Allowable (165:10-17-7)
OR
Oil Allowable (165:10-13-3)

Gas Purchaser/Measurer
First Sales Date

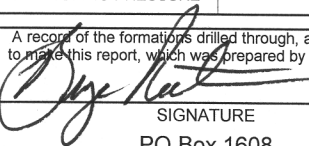
Enable
8/26/2017

INITIAL TEST DATA

INITIAL TEST DATE	9/22/2017
OIL-BBL/DAY	101
OIL-GRAVITY (API)	50
GAS-MCF/DAY	2860
GAS-OIL RATIO CU FT/BBL	28,316
WATER-BBL/DAY	1653
PUMPING OR FLOWING	FLOWING
INITIAL SHUT-IN PRESSURE	1410
CHOKE SIZE	44
FLOW TUBING PRESSURE	573

AS SUBMITTED

A record of the formations drilled through, and pertinent remarks are presented on the reverse. I declare that I have knowledge of the contents of this report and am authorized by my organization to make this report, which was prepared by me or under my supervision and direction, with the data and facts stated herein to be true, correct, and complete to the best of my knowledge and belief.


SIGNATURE
PO Box 1608
ADDRESS
Oklahoma City
CITY
OK
STATE
73101-1608
ZIP
11/20/2017
DATE
405-702-1600
PHONE NUMBER
regulatory@tapstoneenergy.com
EMAIL ADDRESS

PLEASE TYPE OR USE BLACK INK ONLY
FORMATION RECORD

Give formation names and tops, if available, or descriptions and thickness of formations drilled through. Show intervals cored or drillstem tested.

NAMES OF FORMATIONS	TOP
BASE HEEBNER SHALE	6,592'
TONKAWA	7,060'
COTTAGE GROVE	7,510'
HOGSHOOTER	7,853'
OSWEGO	8,368'
ATOKA	9,072'
CHESTER	9,915'
UPPER MERAMEC	11,232'

LEASE NAME ROY 26-19-18 WELL NO. 1H

FOR COMMISSION USE ONLY	
ITD on file <input type="checkbox"/> YES <input type="checkbox"/> NO	
APPROVED _____	DISAPPROVED _____
2) Reject Codes	

Were open hole logs run? <u>X</u> yes ___ no
Date Last log was run _____
was CO ₂ encountered? ___ yes <u>X</u> no at what depths? _____
was H ₂ S encountered? ___ yes <u>X</u> no at what depths? _____
Were unusual drilling circumstances encountered? ___ yes <u>X</u> no
If yes, briefly explain below _____

Other remarks:

640 Acres

X							

If more than three drainholes are proposed, attach a separate sheet indicating the necessary information.

Direction must be stated in degrees azimuth. Please note, the horizontal drainhole and its end point must be located within the boundaries of the lease or spacing unit.

Directional surveys are required for all drainholes and directional wells.

640 Acres

BOTTOM HOLE LOCATION FOR DIRECTIONAL HOLE

SEC	TWP	RGE	COUNTY
Spot Location	1/4	1/4	1/4
Measured Total Depth	True Vertical Depth	BHL From Lease, Unit, or Property Line:	

BOTTOM HOLE LOCATION FOR HORIZONTAL HOLE: (LATERALS)

LATERAL #1			
SEC	TWP	RGE	COUNTY
26	19N	18W	DEWEY
Spot Location	NE 1/4	NW 1/4	NE 1/4 NW 1/4
Depth of Deviation	11,443'	Radius of Turn	754'
Measured Total Depth	17,020'	True Vertical Depth	11,770'
Feet From 1/4 Sec Lines		FSL	264'
Direction		2.37	Total Length
BHL From Lease, Unit, or Property Line:		264'	

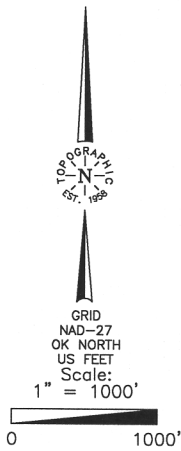
LATERAL #2			
SEC	TWP	RGE	COUNTY
Spot Location	1/4	1/4	1/4
Depth of Deviation	Radius of Turn	Direction	Total Length
Measured Total Depth	True Vertical Depth	BHL From Lease, Unit, or Property Line:	

LATERAL #3			
SEC	TWP	RGE	COUNTY
Spot Location	1/4	1/4	1/4
Depth of Deviation	Radius of Turn	Direction	Total Length
Measured Total Depth	True Vertical Depth	BHL From Lease, Unit, or Property Line:	

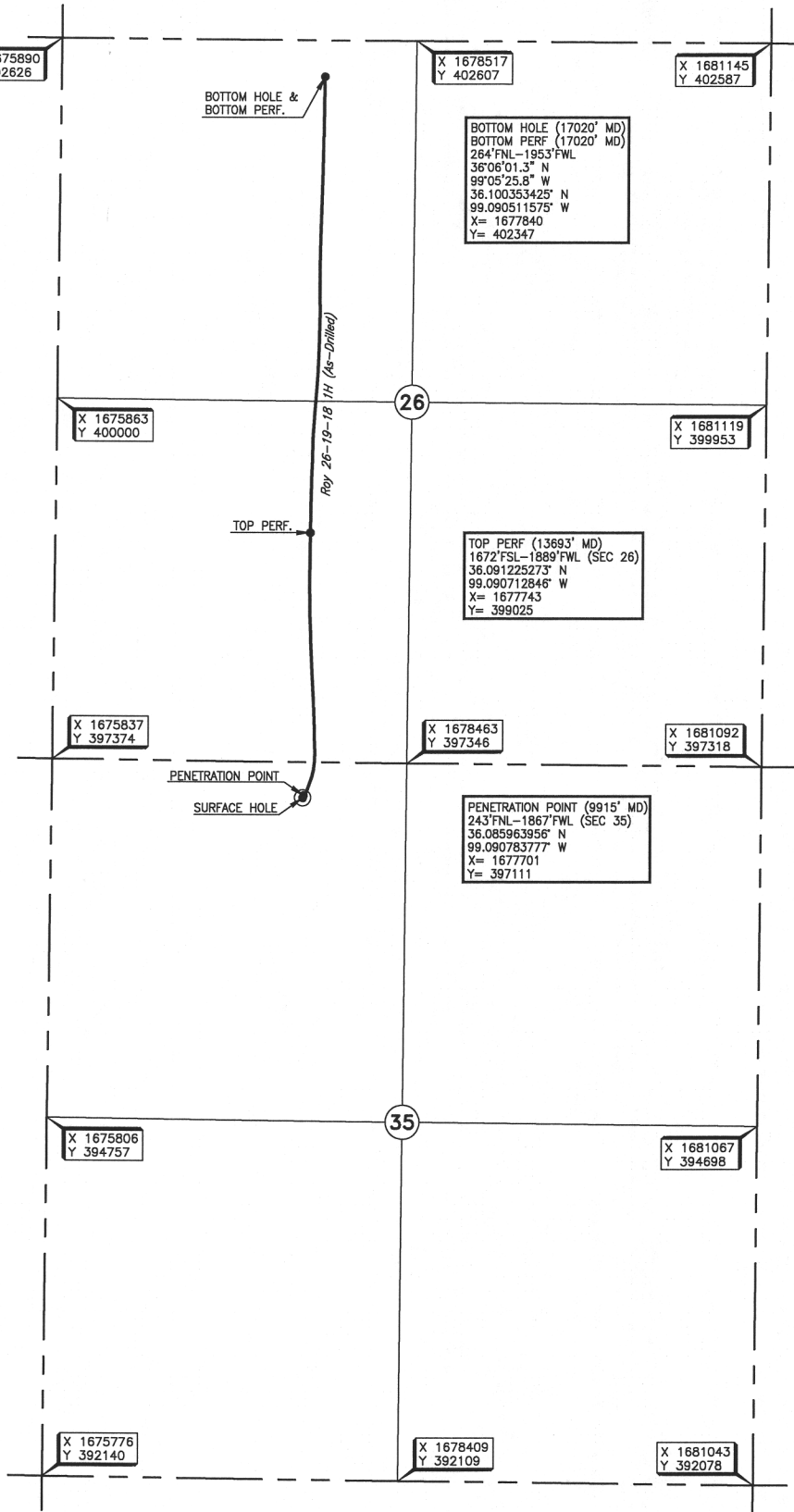
DEWEY

County, Oklahoma

260' FNL-1860' FWL Section 35 Township 19N Range 18W I.M.



Operator: TAPSTONE ENERGY
 Lease Name: ROY 26-19-18
 Topography & Vegetation Loc. fell in terraced grass pasture
 Good Drill Site? Yes
 Best Accessibility to Location From North off county road
 Distance & Direction From the junction of St. Hwy 51/US Hwy 60 & US Hwy 281/US Hwy 270 in Seiling, Oklahoma, go ± 9.75 miles West on St. Hwy 51/US Hwy 60, then ± 4 miles South to the Northwest Corner of Section 35, T19N-R8W.
 Reference Stakes or Alternate Location Stakes Set None
 Well No.: 1H
 ELEVATION: 1901' Gr. at Stake



Information was obtained from a GPS receiver with a horizontal accuracy of ± 1 ft.

DATUM: NAD-27
 LAT: 36°05'09.3" N
 LONG: 99°05'26.9" W
 LAT: 36.085918795° N
 LONG: 99.090806305° W
 STATE PLANE
 COORDINATES (US FEET):
 ZONE: OK NORTH
 X: 1677694
 Y: 397094

280222 Date of Drawing: Aug. 22, 2017
 Invoice # 269676 Date Staked: Feb. 22, 2017 JP

FINAL AS-DRILLED PLAT

AS-DRILLED INFORMATION
 FURNISHED BY TAPSTONE ENERGY

API NO. 0604323504
OTC PROD. UNIT NO. 043218762

PLEASE TYPE OR USE BLACK INK ONLY
NOTE:

Attach copy of original 1002A if recompletion or reentry.

☒ ORIGINAL
☐ AMENDED (Reason)

OKLAHOMA CORPORATION COMMISSION
Oil & Gas Conservation Division
Post Office Box 52000
Oklahoma City, Oklahoma 73152-2000
Rule 165:10-3-25

RECEIVED

NOV 20 2017

OKLAHOMA CORPORATION COMMISSION

Form 1002A
Rev. 2009

1016EZ

COMPLETION REPORT

TYPE OF DRILLING OPERATION

☐ STRAIGHT HOLE ☐ DIRECTIONAL HOLE ☒ HORIZONTAL HOLE
☐ SERVICE WELL

If directional or horizontal, see reverse for bottom hole location.

COUNTY DEWEY SEC 35 TWP 19N RGE 18W
LEASE NAME ROY 26-19-18
NE 1/4 NW 1/4 NE 1/4 NW 1/4 FNL OF 1/4 SEC 260' FWL OF 1/4 SEC 1860'
ELEVATION N Derrick 1926' Ground 1901' Latitude (if known) 36.0859188 Longitude (if known) -99.09080631
OPERATOR NAME Tapstone Energy, LLC OTC/OCC OPERATOR NO. 23467
ADDRESS PO Box 1608
CITY Oklahoma City STATE OK ZIP 73101-1608

SPUD DATE 3/26/17
DRLG FINISHED DATE 5/6/17
DATE OF WELL COMPLETION 8/19/17
1st PROD DATE 8/26/17
RECOMP DATE

640 Acres
W E
LOCATE WELL

COMPLETION TYPE

☒ SINGLE ZONE
☐ MULTIPLE ZONE
Application Date
COMINGLED
Application Date
LOCATION 664184 - Interim
EXCEPTION ORDER
INCREASED DENSITY
ORDER NO.

CASING & CEMENT (Form 1002C must be attached)

TYPE	SIZE	WEIGHT	GRADE	FEET	PSI	SAX	TOP OF CMT
CONDUCTOR							
SURFACE	13 3/8"	54.5	J-55	1490'	2000	1268	SURFACE
INTERMEDIATE	9 5/8"	40	P-110	11,455'	2,800	1061	6,020' EST
PRODUCTION	5 1/2"	20	P-110	17,020'	3,950	1550	8,467' EST
LINER							
TOTAL DEPTH							17,020'

PACKER @ BRAND & TYPE PLUG @ TYPE PLUG @ TYPE
PACKER @ BRAND & TYPE PLUG @ TYPE PLUG @ TYPE

COMPLETION & TEST DATA BY PRODUCING FORMATION

FORMATION MISSISSIPPIAN
SPACING & SPACING ORDER NUMBER 640 ac - 662472
CLASS: Oil, Gas, Dry, Inj, Disp, Comm Disp, Svc GAS
PERFORATED INTERVALS 13,693'-17,020'
ACID/VOLUME 48,468 gal 15%HCL
FRACTURE TREATMENT (Fluids/Prop Amounts) 176,605 bbls
3,155,953# PROP

Reported
To Eric Focles

Min Gas Allowable (165:10-17-7)

Gas Purchaser/Measurer

Enable

☒

OR

First Sales Date

8/26/2017

INITIAL TEST DATA

Oil Allowable (165:10-13-3)

INITIAL TEST DATE 9/22/2017
OIL-BBL/DAY 101
OIL-GRAVITY (API) 50
GAS-MCF/DAY 2860
GAS-OIL RATIO CU FT/BBL 28,316
WATER-BBL/DAY 1653
PUMPING OR FLOWING FLOWING
INITIAL SHUT-IN PRESSURE 1410
CHOKE SIZE 44
FLOW TUBING PRESSURE 573

AS SUBMITTED

A record of the formations drilled through, and pertinent remarks are presented on the reverse. I declare that I have knowledge of the contents of this report and am authorized by my organization to make this report, which was prepared by me or under my supervision and direction, with the data and facts stated herein to be true, correct, and complete to the best of my knowledge and belief.

SIGNATURE PO Box 1608 ADDRESS
NAME (PRINT OR TYPE) Bryan Rother CITY Oklahoma City STATE OK ZIP 73101-1608
DATE 11/20/2017 PHONE NUMBER 405-702-1600
EMAIL ADDRESS regulatory@tapstoneenergy.com