

Oklahoma Corporation Commission
Oil & Gas Conservation Division
Post Office Box 52000
Oklahoma City, Oklahoma 73152-2000
Rule 165: 10-3-25

Form 1002A

API No.: 35003222810001

Completion Report

Spud Date: May 04, 2012

OTC Prod. Unit No.: 003-208355

Drilling Finished Date: June 01, 2012

Amended

1st Prod Date: July 17, 2012

Amend Reason: RECLASSIFY WELL AS TEMPORARILY ABANDONED

Completion Date: June 26, 2012

Recomplete Date: November 27, 2017

Drill Type: HORIZONTAL HOLE

Well Name: RAY SMITH 22-28-9 1H

Purchaser/Measurer:

Location: ALFALFA 22 28N 9W
NW NE NW NW
275 FNL 860 FWL of 1/4 SEC
Derrick Elevation: 1360 Ground Elevation: 1345

First Sales Date:

Operator: CHESAPEAKE OPERATING LLC 17441
PO BOX 18496
6100 N WESTERN AVE
OKLAHOMA CITY, OK 73154-0496

Completion Type		Location Exception		Increased Density	
X	Single Zone	Order No		Order No	
	Multiple Zone	602573		There are no Increased Density records to display.	
	Commingle				

Casing and Cement							
Type	Size	Weight	Grade	Feet	PSI	SAX	Top of CMT
SURFACE	13 3/8	48	H-40	358		320	SURFACE
INTERMEDIATE	9 5/8	36	J-55	1532		500	SURFACE
PRODUCTION	7	26	P-110EC	5343		200	3495

Liner								
Type	Size	Weight	Grade	Length	PSI	SAX	Top Depth	Bottom Depth
LINER	4 1/2	13.5	P-110EC	5246	0	495	4686	9932

Total Depth: 9932

Packer	
Depth	Brand & Type
4674	A-3

Plug	
Depth	Plug Type
9870	CIBP
9870	PBTD

Initial Test Data

Test Date	Formation	Oil BBL/Day	Oil-Gravity (API)	Gas MCF/Day	Gas-Oil Ratio Cu FT/BBL	Water BBL/Day	Pumpin or Flowing	Initial Shut-In Pressure	Choke Size	Flow Tubing Pressure
Oct 14, 2017	MISSISSIPPIAN									

Completion and Test Data by Producing Formation			
Formation Name: MISSISSIPPIAN		Code: 359MSSP	Class: TA
Spacing Orders		Perforated Intervals	
Order No	Unit Size	From	To
596712	640	5320	9791
Acid Volumes		Fracture Treatments	
There are no Acid Volume records to display.		There are no Fracture Treatments records to display.	

Formation	Top
MISSISSIPPIAN	5241

Were open hole logs run? No

Date last log run:

Were unusual drilling circumstances encountered? No

Explanation:

Other Remarks
There are no Other Remarks.

Lateral Holes
Sec: 22 TWP: 28N RGE: 9W County: ALFALFA SW SE SW SW 67 FSL 955 FWL of 1/4 SEC Depth of Deviation: 4811 Radius of Turn: 422 Direction: 179 Total Length: 4691 Measured Total Depth: 9932 True Vertical Depth: 5233 End Pt. Location From Release, Unit or Property Line: 67

FOR COMMISSION USE ONLY	
Status: Accepted	1137991

API NO. 35-003-22281
OTC PROD. UNIT NO. 003-208355

PLEASE TYPE OR USE BLACK INK ONLY

NOTE:

Attach copy of original 1002A if recompletion or reentry.

OKLAHOMA CORPORATION COMMISSION

Oil & Gas Conservation Division

Post Office Box 52000

Oklahoma City, Oklahoma 73152-2000

Rule 165:10-3-25

RECEIVED
OCT 20 2017
Rev. 2009

OKLAHOMA CORPORATION
COMMISSION

ORIGINAL
AMENDED
Reason Amended *Reclassify well as temporarily abandoned*

TYPE OF DRILLING OPERATION

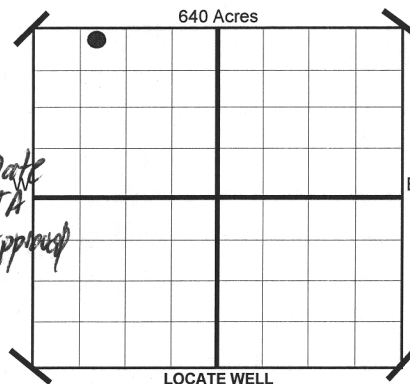
☐ STRAIGHT HOLE ☐ DIRECTIONAL HOLE ☒ HORIZONTAL HOLE
SERVICE WELL

If directional or horizontal, see reverse for bottom hole location.

COUNTY	ALFALFA	SEC	22	TWP	28N	RGE	9W
LEASE NAME	RAY SMITH 22-28-9						
SHL	NW 1/4 NE 1/4 NW 1/4 NW 1/4		FNL		FWL OF 1H		
ELEVATION	Kelly Bushi 1,360		Ground 1,345		275 1/4 SEC 860		
OPERATOR NAME	CHESAPEAKE OPERATING, INC.				OTC/OCC OPERATOR NO. 17441		
ADDRESS	P.O. BOX 18496						
CITY	OKLAHOMA CITY			STATE	OK	ZIP	73154

COMPLETION REPORT

SPUD DATE	5/4/2012
DRLG FINISHED DATE	6/1/2012
DATE OF WELL COMPLETION	6/26/2012
1ST PROD DATE	7/17/2012
RECOMP DATE	11-27-2017
Longitude (if Known)	



COMPLETION TYPE

<input checked="" type="checkbox"/> SINGLE ZONE
<input type="checkbox"/> MULTIPLE ZONE
<input type="checkbox"/> COMMINGLED
LOCATION EXCEPTION ORDER NO. 602573 (F.O.)
INCREASED DENSITY ORDER NO. N/A

CASING & CEMENT (Form 1002C must be attached)

TYPE	SIZE	WEIGHT	GRADE	FEET	PSI	SAX	TOP
CONDUCTOR							
SURFACE	13 3/8	48#	H-40	358		320	Surface
INTERMEDIATE	9 5/8	36#	J-55	1,532		500	Surface
PRODUCTION	7	26#	P-110EC	5,343		200	3,495
LINER	4 1/2	13.5#	P-110EC	4,686 - 9,932		495	4,686
TOTAL DEPTH							9,932

PACKER @ 4674 BRAND & TYPE A-3

PLUG @ 9,870 TYPE CIBP

PLUG @ 9,870 TYPE PBTD

TOTAL DEPTH

COMPLETION & TEST DATA BY PRODUCING FORMATION

FORMATION	MISSISSIPPIAN
SPACING & SPACING ORDER NUMBER	640 596712
CLASS: Oil, Gas, Dry, Inj. Disp, Comm Disp, Svc	Temporarily Abandoned
PERFORATED INTERVALS	5320-9791
ACID/VOLUME	
FRACTURE TREATMENT (Fluids/Prop Amounts)	

Minimum Gas Allowable (165:10-17-7)

Gas Purchaser/Measurer

OR
Oil Allowable (165:10-13-3)

1st Sales Date

INITIAL TEST DATA

INITIAL TEST DATE	10/14/2017
OIL-BBL/DAY	0
OIL-GRAVITY (API)	
GAS-MCF/DAY	0
GAS-OIL RATIO CU FT/BBL	
WATER-BBL/DAY	0
PUMPING OR FLOWING	
INITIAL SHUT-IN PRESSURE	
CHOKE SIZE	
FLOW TUBING PRESSURE	

A record of the formations drilled through, and pertinent remarks are presented on the reverse. I declare that I have knowledge of the contents of this report and am authorized by my organization to make this report, which was prepared by me or under my supervision and direction, with the data and facts stated herein to be true, correct, and complete to the best of my knowledge and belief.

SIGNATURE *JP Powell* JP POWELL, REGULATORY SPECIALIST 10/17/2017 405-848-8000
P.O. BOX 18496 OKLAHOMA CITY OK 73154 jp.powell@chk.com
ADDRESS CITY

AS SUBMITTED

PLEASE TYPE OR USE BLACK INK ONLY
FORMATION RECORD

Give formation names and tops, if available, or descriptions and thickness of formation: LEASE NAME RAY SMITH 22-28-9
drilled through. Show intervals cored or drillstem tested.

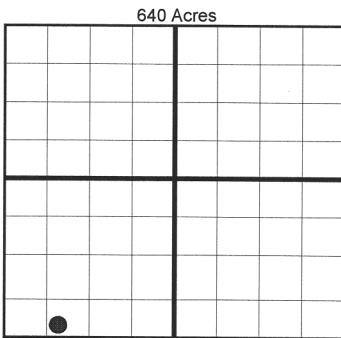
WELL NO. 1H

NAMES OF FORMATIONS	TOP
MISSISSIPPIAN	5,241

FOR COMMISSION USE ONLY	
ITD on file	<input type="checkbox"/> YES <input type="checkbox"/> NO
APPROVED	DISAPPROVED
2) Reject Codes	

Were open hole logs run?	yes <input checked="" type="checkbox"/> no <input type="checkbox"/>
Latest log was run	NA
Was CO ₂ encountered?	yes <input checked="" type="checkbox"/> no <input type="checkbox"/> at what depths?
Was H ₂ S encountered?	yes <input checked="" type="checkbox"/> no <input type="checkbox"/> at what depths?
Were unusual drilling circumstances encountered?	yes <input type="checkbox"/> no <input checked="" type="checkbox"/>
If yes, briefly explain.	

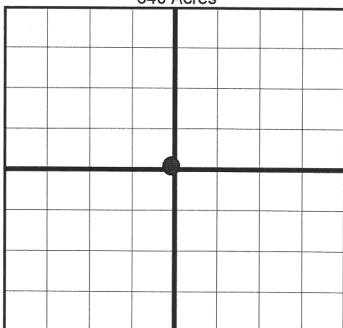
Other remarks:



If more than three drainholes are proposed, attach a separate sheet indicating the necessary information.

Direction must be stated in degrees azimuth. Please note, the horizontal drainhole and its end point must be located within the boundaries of the lease or spacing unit.

Directional surveys are required for all drainholes and directional wells.



BOTTOM HOLE LOCATION FOR DIRECTIONAL HOLE

SEC	TWP	RGE	COUNTY
Spot Location	1/4	1/4	1/4
Measured Total Depth	True Vertical Depth	Feet From 1/4 Sec Lines	FSL FWL
BHL From Lease, Unit, or Property Line:			

BOTTOM HOLE LOCATION FOR HORIZONTAL HOLE: (LATERALS)

LATERAL #1

SEC	TWP	RGE	COUNTY
22	28N	9W	ALFALFA
Spot Location	SW 1/4 SE 1/4 SW 1/4 SW 1/4	Feet From 1/4 Sec Lines	FSL 67 FWL 955
Depth of Deviation	4,811	Radius of Turn	422
Measured Total Depth	9,932	True Vertical Depth	5,233
		Direction	179
		Total Length	4,691
BHL From Lease, Unit, or Property Line: 67			

LATERAL #2

SEC	TWP	RGE	COUNTY
Spot Location	1/4	1/4	1/4
Depth of Deviation	Radius of Turn	Direction	Total Length
Measured Total Depth	True Vertical Depth	BHL From Lease, Unit, or Property Line:	

LATERAL #3

SEC	TWP	RGE	COUNTY
Spot Location	1/4	1/4	1/4
Depth of Deviation	Radius of Turn	Direction	Total Length
Measured Total Depth	True Vertical Depth	BHL From Lease, Unit, or Property Line:	