

Oklahoma Corporation Commission
Oil & Gas Conservation Division
Post Office Box 52000
Oklahoma City, Oklahoma 73152-2000
Rule 165: 10-3-25

Form 1002A

API No.: 35017239780003

Completion Report

Spud Date: August 10, 2007

OTC Prod. Unit No.: 017-122445

Drilling Finished Date: September 20, 2007

Amended

1st Prod Date: November 10, 2007

Amend Reason: RECLASSIFY WELL AS TEMPORARILY ABANDONED

Completion Date: November 21, 2007

Recomplete Date: November 27, 2017

Drill Type: HORIZONTAL HOLE

Well Name: MARILYN 1-24H

Purchaser/Measurer:

Location: CANADIAN 24 14N 5W
SW NW SW SE
775 FSL 2414 FEL of 1/4 SEC
Derrick Elevation: 1160 Ground Elevation: 1141

First Sales Date:

Operator: CHESAPEAKE OPERATING LLC 17441
PO BOX 18496
6100 N WESTERN AVE
OKLAHOMA CITY, OK 73154-0496

Completion Type		Location Exception		Increased Density	
X	Single Zone	Order No		Order No	
	Multiple Zone	There are no Location Exception records to display.		There are no Increased Density records to display.	
	Commingled				

Casing and Cement							
Type	Size	Weight	Grade	Feet	PSI	SAX	Top of CMT
SURFACE	9 5/8	36	J-55	1038		540	SURFACE
PRODUCTION	7	26	J-55	7630		445	5110

Liner								
Type	Size	Weight	Grade	Length	PSI	SAX	Top Depth	Bottom Depth
There are no Liner records to display.								

Total Depth: 10890

Packer	
Depth	Brand & Type
There are no Packer records to display.	

Plug	
Depth	Plug Type
There are no Plug records to display.	

Initial Test Data										
Test Date	Formation	Oil BBL/Day	Oil-Gravity (API)	Gas MCF/Day	Gas-Oil Ratio Cu FT/BBL	Water BBL/Day	Pumpin or Flowing	Initial Shut-In Pressure	Choke Size	Flow Tubing Pressure
Nov 08, 2017	HUNTON									

Completion and Test Data by Producing Formation			
Formation Name: HUNTON		Code: 269HNTN	Class: TA
Spacing Orders		Perforated Intervals	
Order No	Unit Size	From	To
547223	160	7630	10890
Acid Volumes		Fracture Treatments	
There are no Acid Volume records to display.		There are no Fracture Treatments records to display.	

Formation	Top
OSWEGO	6602
PRUE	6709
VERDIGRIS	6764
SKINNER	6770
MISSISSIPPI LIME	6941
WOODFORD	7017
HUNTON	7074

Were open hole logs run? Yes
Date last log run: August 23, 2017

Were unusual drilling circumstances encountered? No
Explanation:

Other Remarks
OPEN HOLE COMPLETION

Lateral Holes
Sec: 24 TWP: 14N RGE: 5W County: CANADIAN
SW NE NW NE
465 FNL 1694 FEL of 1/4 SEC
Depth of Deviation: 6625 Radius of Turn: 485 Direction: 30 Total Length: 3739
Measured Total Depth: 10890 True Vertical Depth: 7094 End Pt. Location From Release, Unit or Property Line: 465

FOR COMMISSION USE ONLY	
Status: Accepted	1138244

API NO. 017-23978
OTC PROD.
UNIT NO. 017-122445

PLEASE TYPE OR USE BLACK INK ONLY

NOTE:

Attach copy of original 1002A if recompletion or reentry.

OKLAHOMA CORPORATION COMMISSION

Oil & Gas Conservation Division

Post Office Box 52000

Oklahoma City, Oklahoma 73152-2000

Rule 165:10-3-25

RECEIVED

Form 1002A
Rev. 2009

NOV 22 2017

OKLAHOMA CORPORATION
COMMISSION

☐ ORIGINAL
☒ AMENDED
Reason Amended *Relassify well as Temporarily Abandoned*

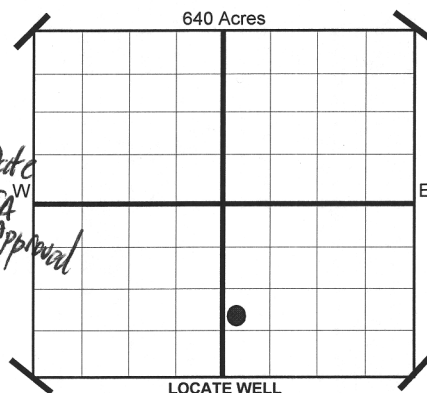
TYPE OF DRILLING OPERATION

☐ STRAIGHT HOLE ☐ DIRECTIONAL HOLE ☒ HORIZONTAL HOLE

If directional or horizontal, see reverse for bottom hole location.

COUNTY	CANADIAN	SEC	24	TWP	14N	RGE	05W
LEASE NAME	MARILYN	WELL NO	1-24H				
SHL	SW 1/4 NW 1/4 SW 1/4 SE 1/4	FSL	775	1/4 SEC	2,414		
ELEVATION	Derrick Ft 1,160	Ground	1,141	Latitude (if Known)			
OPERATOR NAME	CHESAPEAKE OPERATING, L.L.C.			OTC/OCC OPERATOR NO.		17441	
ADDRESS	P.O. BOX 18496						
CITY	OKLAHOMA CITY		STATE	OK		ZIP	73154

SPUD DATE	8/10/2007
DRLG FINISHED DATE	9/20/2007
DATE OF WELL COMPLETION	11/21/2007
1ST PROD DATE	11/10/2007
RECOMP DATE	11-27-2017
Longitude (if Known)	



COMPLETION TYPE

<input checked="" type="checkbox"/> SINGLE ZONE	
<input type="checkbox"/> MULTIPLE ZONE	
Application Date	
COMINGLED	
Application Date	
LOCATION EXCEPTION ORDER NO.	N/A
INCREASED DENSITY ORDER NO.	N/A

CASING & CEMENT (Form 1002C must be attached)

TYPE	SIZE	WEIGHT	GRADE	FEET	PSI	SAX	TOP
CONDUCTOR							
SURFACE	9 5/8"	36#	J-55	1,038		540	SURFACE
INTERMEDIATE							
PRODUCTION	7"	26#	J-55	7,630		445	5,110
LINER							

PACKER @ N/A BRAND & TYPE PLUG @ TYPE PLUG @ TYPE TOTAL DEPTH 10,890
PACKER @ BRAND & TYPE PLUG @ TYPE PLUG @ TYPE

COMPLETION & TEST DATA BY PRODUCING FORMATION

FORMATION	HUNTON
SPACING & SPACING ORDER NUMBER	160 547223
CLASS: Oil, Gas, Dry, Inj, Disp, Comm Disp, Svc	Temporarily Abandoned
PERFORATED INTERVALS	*7630-10,890
ACID/VOLUME	
FRACTURE TREATMENT (Fluids/Prop Amounts)	

Minimum Gas Allowable

(165:10-17-7)

Gas Purchaser/Measurer



OR

1st Sales Date

Oil Allowable

(165:10-13-3)

INITIAL TEST DATA

INITIAL TEST DATE	11/8/2017
OIL-BBL/DAY	0
OIL-GRAVITY (API)	
GAS-MCF/DAY	0
GAS-OIL RATIO CU FT/BBL	
WATER-BBL/DAY	0
PUMPING OR FLOWING	
INITIAL SHUT-IN PRESSURE	
CHOKE SIZE	
FLOW TUBING PRESSURE	

AS SUBMITTED

A record of the formations drilled through, and pertinent remarks are presented on the reverse. I declare that I have knowledge of the contents of this report and am authorized by my organization to make this report, which was prepared by me or under my supervision and direction, with the data and facts stated herein to be true, correct, and complete to the best of my knowledge and belief.

SIGNATURE	JP Powell, Regulatory Specialist	DATE	11/21/2017	PHONE NUMBER	405-848-8000
P.O. BOX 18496	OKLAHOMA CITY	STATE	OK	ZIP	73154
ADDRESS	CITY	STATE	ZIP	EMAIL ADDRESS	jp.powell@chk.com

PLEASE TYPE OR USE BLACK INK ONLY
FORMATION RECORD

Give formation names and tops, if available, or descriptions and thickness of formations drilled through. Show intervals cored or drillstem tested.

LEASE NAME MARILYN

WELL NO. 1-24H

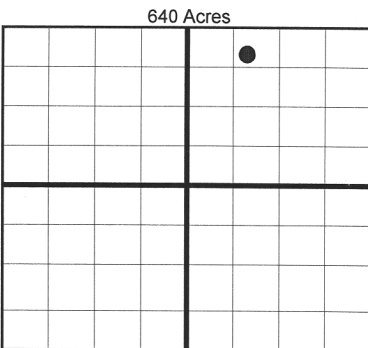
NAMES OF FORMATIONS	TOP
OSWEGO	6,602
PRUE	6,709
VERDIGRIS	6,764
SKINNER	6,770
MISSISSIPPI LIME	6,941
WOODFORD	7,017
HUNTON	7,074

FOR COMMISSION USE ONLY	
ITD on file <input type="checkbox"/> YES <input type="checkbox"/> NO	
APPROVED _____	DISAPPROVED _____
2) Reject Codes	

Were open hole logs run?	<u>X</u> yes	no
Date last log was run	8/23/2017	
Was CO ₂ encountered?	yes	<u>X</u> no at what depths?
Was H ₂ S encountered?	yes	<u>X</u> no at what depths?
Were unusual drilling circumstances encountered?	yes	<u>X</u> no
If yes, briefly explain.		

Other remarks:

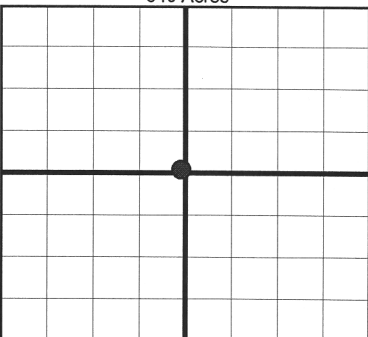
*OPEN HOLE COMPLETION



If more than three drainholes are proposed, attach a separate sheet indicating the necessary information.

Direction must be stated in degrees azimuth. Please note, the horizontal drainhole and its end point must be located within the boundaries of the lease or spacing unit.

Directional surveys are required for all drainholes and directional wells.



BOTTOM HOLE LOCATION FOR DIRECTIONAL HOLE

SEC	TWP	RGE	COUNTY
Spot Location			
1/4	1/4	1/4	1/4
Measured Total Depth		True Vertical Depth	Feet From 1/4 Sec Lines FSL
BHL From Lease, Unit, or Property Line:			

BOTTOM HOLE LOCATION FOR HORIZONTAL HOLE: (LATERALS)

SEC	TWP	RGE	COUNTY
24	14N	05W	CANADIAN
Spot Location			
SW 1/4	NE 1/4	NW 1/4	NE 1/4
Depth of Deviation		Radius of Turn	Direction
6,625		485	30
Measured Total Depth		True Vertical Depth	Total Length
10,890		7,094	3,739
BHL From Lease, Unit, or Property Line:			
465			

LATERAL #2

SEC	TWP	RGE	COUNTY
Spot Location			
1/4	1/4	1/4	1/4
Depth of Deviation		Radius of Turn	Direction
Measured Total Depth		True Vertical Depth	Total Length
BHL From Lease, Unit, or Property Line:			

LATERAL #3

SEC	TWP	RGE	COUNTY
Spot Location			
1/4	1/4	1/4	1/4
Depth of Deviation		Radius of Turn	Direction
Measured Total Depth		True Vertical Depth	Total Length
BHL From Lease, Unit, or Property Line:			