

Oklahoma Corporation Commission  
Oil & Gas Conservation Division  
Post Office Box 52000  
Oklahoma City, Oklahoma 73152-2000  
Rule 165: 10-3-25

Form 1002A

API No.: 35019258160001

**Completion Report**

Spud Date: December 31, 2012

OTC Prod. Unit No.: 019-210804

Drilling Finished Date: February 10, 2013

**Amended**

1st Prod Date: June 13, 2013

Amend Reason: DRILLED OUT CIBP AND COMMINGLED

Completion Date: January 27, 2014

Recomplete Date: June 10, 2018

**Drill Type: STRAIGHT HOLE**

Min Gas Allowable: Yes

Well Name: WINKING OWL 1-18

Purchaser/Measurer: TARGA PIPELINE

Location: CARTER 18 3S 2W  
C NE NE  
660 FNL 660 FEL of 1/4 SEC  
Latitude: 34.301778 Longitude: -97.441917  
Derrick Elevation: 1026 Ground Elevation: 1014

First Sales Date: 06/14/2013

Operator: CHARTER OAK PRODUCTION CO LLC 21672

13929 QUAIL POINTE DR  
OKLAHOMA CITY, OK 73134-1037

Completion Type		Location Exception		Increased Density	
	Single Zone	Order No		Order No	
	Multiple Zone	N/A		605560	
X	Commingled			201804013	

Casing and Cement							
Type	Size	Weight	Grade	Feet	PSI	SAX	Top of CMT
CONDUCTOR	16			40			SURFACE
SURFACE	9 5/8	40	N-80	656		320	SURFACE
PRODUCTION	5 1/2	17 & 20	N-80	9968		1070	5090

Liner								
Type	Size	Weight	Grade	Length	PSI	SAX	Top Depth	Bottom Depth
There are no Liner records to display.								

**Total Depth: 9980**

Packer	
Depth	Brand & Type
There are no Packer records to display.	

Plug	
Depth	Plug Type
9100	CIBP

Initial Test Data
-------------------

Test Date	Formation	Oil BBL/Day	Oil-Gravity (API)	Gas MCF/Day	Gas-Oil Ratio Cu FT/BBL	Water BBL/Day	Pumpin or Flowing	Initial Shut-In Pressure	Choke Size	Flow Tubing Pressure
May 29, 2013	ARBUCKLE						SHUT-IN	3764		
May 31, 2013	VIOLA						SHUT-IN	1929		
Jan 27, 2014	TUSSY	40	31.7	54	1350	100	PUMPING	1795		
Jun 10, 2018	BROMIDE-MCLISH-VIOLA-TUSSY	4	33.2	57	14250	1	PUMPING	150		

#### Completion and Test Data by Producing Formation

Formation Name: ARBUCKLE

Code: 169ABCK

Class: DRY

##### Spacing Orders

Order No	Unit Size
568630	160

##### Perforated Intervals

From	To
9364	9857

##### Acid Volumes

1,500 GALLONS 15% NEFE

##### Fracture Treatments

12,715 BARRELS SLICK WATER, 307,500 POUNDS 20/40 SAND

Formation Name: BROMIDE

Code: 202BRMD

Class: OIL

##### Spacing Orders

Order No	Unit Size
568630	160

##### Perforated Intervals

From	To
8012	8388

##### Acid Volumes

TREATED WITH ARBUCKLE

##### Fracture Treatments

TREATED WITH ARBUCKLE

Formation Name: MCLISH

Code: 202MCLS

Class: OIL

##### Spacing Orders

Order No	Unit Size
568630	160

##### Perforated Intervals

From	To
8581	8583

##### Acid Volumes

TREATED WITH ARBUCKLE

##### Fracture Treatments

TREATED WITH ARBUCKLE

Formation Name: VIOLA

Code: 202VIOL

Class: OIL

##### Spacing Orders

Order No	Unit Size
260736	160

##### Perforated Intervals

From	To
7070	7718

##### Acid Volumes

29,904 GALLONS 20% NEFE

##### Fracture Treatments

9,549 BARRELS SLICK WATER, 85,785 POUNDS 20/40 SAND

Formation Name: TUSSY		Code: 404TSSY	Class: OIL
<b>Spacing Orders</b>		<b>Perforated Intervals</b>	
<b>Order No</b>	<b>Unit Size</b>	<b>From</b>	<b>To</b>
260736	160	6120	6735
<b>Acid Volumes</b>		<b>Fracture Treatments</b>	
1,680 GALLONS 15% NEFE		4,516 BARRELS SLICK WATER, 217,000 POUNDS 20/40 SAND, 250 TONS CO2	
Formation Name: BROMIDE-MCLISH-VIOLA-TUSSY		Code:	Class: OIL

Formation	Top
TUSSY	6110
VIOLA	7026
BROMIDE	7777
MCLISH	8482
OIL CREEK	8610
JOINS	9030
ARBUCKLE	9305

Were open hole logs run? Yes  
Date last log run: August 28, 2013  
  
Were unusual drilling circumstances encountered? No  
Explanation:

<b>Other Remarks</b>
There are no Other Remarks.

<b>FOR COMMISSION USE ONLY</b>	
Status: Accepted	1140404

API NO. 35-019-25816  
OTC PROD. UNIT NO. 019-210804

PLEASE TYPE OR USE BLACK INK ONLY  
NOTE:

Attach copy of original 1002A  
if recompletion or reentry.

OKLAHOMA CORPORATION COMMISSION  
Oil & Gas Conservation Division  
Post Office Box 52000  
Oklahoma City, Oklahoma 73152-2000  
Rule 165:10-3-25

RECEIVED

JUL 19 2018

OKLAHOMA CORPORATION  
COMMISSION

Form 1002A  
Rev. 2009

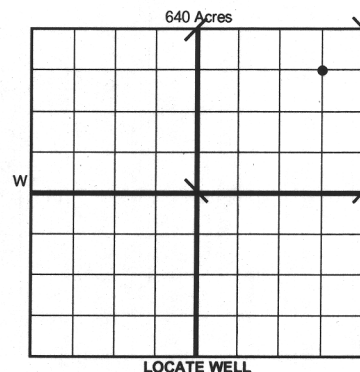
☐ ORIGINAL  
☒ AMENDED (Reason) Drilled out CIBP & Commingled

TYPE OF DRILLING OPERATION

☒ STRAIGHT HOLE ☐ DIRECTIONAL HOLE ☐ HORIZONTAL HOLE  
☐ SERVICE WELL

If directional or horizontal, see reverse for bottom hole location.

COUNTY	Carter	SEC	18	TWP	03S	RGE	02W	SPUD DATE	12/31/12
LEASE NAME	Winking Owl			WELL NO.	1-18			DRLG FINISHED DATE	2/10/13
1/4 C 1/4 NE 1/4 NE 1/4				1/4 SEC 660' FNL	1/4 SEC 660' FEL			DATE OF WELL COMPLETION	1/27/14
ELEVATIO N Derrick	1026'	Ground	1014'	Latitude (if known)	34.301778			1st PROD DATE	6/13/13
OPERATOR NAME	Charter Oak Production Co., LLC			OTC/OCC OPERATOR NO.	21672				
ADDRESS 13929 Quail Pointe Dr.									
CITY Oklahoma City				STATE	OK		ZIP	73134	



COMPLETION TYPE

<input type="checkbox"/> SINGLE ZONE
<input type="checkbox"/> MULTIPLE ZONE
Application Date
<input checked="" type="checkbox"/> COMMINGLED
Application Date 7/10/18
LOCATION EXCEPTION ORDER N/A
INCREASED DENSITY ORDER NO. 605560; 201804013

CASING & CEMENT (Form 1002C must be attached)

TYPE	SIZE	WEIGHT	GRADE	FEET	PSI	SAX	TOP OF CMT
CONDUCTOR	16"			40'			Surface
SURFACE	9 5/8"	40#	N-80	656'		320	Surface
INTERMEDIATE							
PRODUCTION	5 1/2"	17# & 20#	N-80	9968'		1070	5090'
LINER							

PACKER @ \_\_\_\_\_ BRAND & TYPE \_\_\_\_\_ PLUG @ 9100' TYPE CIBP PLUG @ \_\_\_\_\_ TYPE \_\_\_\_\_ TOTAL DEPTH 9980'  
PACKER @ \_\_\_\_\_ BRAND & TYPE \_\_\_\_\_ PLUG @ \_\_\_\_\_ TYPE \_\_\_\_\_ PLUG @ \_\_\_\_\_ TYPE \_\_\_\_\_

COMPLETION & TEST DATA BY PRODUCING FORMATION 169 ARBUCKLE 202 BRMID 202 MCLIS 202 VIOLA 40Y TSSY

FORMATION	Arbuckle	Bromide / McLish	Viola	Tussy	Tussy, Viola, Bromide, McLish
SPACING & SPACING ORDER NUMBER	160 Ac. - 568630	160 Ac. - 568630	160 Ac. - 260736	160 Ac. - 260736	160 Ac. - 260736, 568630
CLASS: Oil, Gas, Dry, Inj, Disp, Comm Disp, Svc	Oil Dry below plug	Oil	Oil	Oil	Oil
PERFORATED INTERVALS	9364' - 9857' O.A.	8012' - 8583' O.A. 8388' - 8581'	7070' - 7718' O.A.	6120' - 6735' O.A.	6120' - 8583' O.A.
ACID/VOLUME	1500 Gal 15% NeFe	Treated with Arbuckle	29,904 Gal 20% NeFe	1680 Gal 15% NeFe	N/A
FRACTURE TREATMENT (Fluids/Prop Amounts)	12,715 BBL slick water		9549 BBL slick water	4516 BBL slick water	N/A
	307,500# 20/40 sand		85,785# 20/40 sand	217,000# 20/40 sand	
				250 tons CO2	

☒ Min Gas Allowable (165:10-17-7) OR ☐ Oil Allowable (165:10-13-3) Gas Purchaser/Measurer First Sales Date Targa Pipeline 6/14/13

INITIAL TEST DATA

INITIAL TEST DATE	5/29/13	Tested with Arbuckle	5/31/13	1/27/14	6/10/18
OIL-BBL/DAY	N/A	-----	N/A	40	4
OIL-GRAVITY ( API)	N/A	-----	N/A	31.7	33.2
GAS-MCF/DAY	N/A	-----	N/A	54	57
GAS-OIL RATIO CU FT/BBL	N/A	-----	N/A	1350	14250
WATER-BBL/DAY	N/A	-----	N/A	100	1
PUMPING OR FLOWING	Shut-in	-----	Shut-in	Pumping	Pumping
INITIAL SHUT-IN PRESSURE	3764 psi	-----	1929 psi	1795 psi	150 psi
CHOKE SIZE	N/A	-----	N/A	N/A	N/A
FLOW TUBING PRESSURE	N/A	-----	N/A	N/A	N/A

A record of the formations drilled through, and pertinent remarks are presented on the reverse. I declare that I have knowledge of the contents of this report and am authorized by my organization to make this report, which was prepared by me or under my supervision and direction, with the data and facts stated herein to be true, correct, and complete to the best of my knowledge and belief.

Joseph C. Brevetti SIGNATURE  
13929 Quail Pointe Dr. ADDRESS  
Oklahoma City OK 73134 CITY STATE ZIP  
brevetti@charteroakproduction.com EMAIL ADDRESS  
7/10/18 DATE (405) 286-0361 PHONE NUMBER  
JC Brevetti, Engineering Tech. NAME (PRINT OR TYPE)

AS SUBMITTED

### FORMATION RECORD

LEASE NAME	Winking Owl
------------	-------------

WELL NO. 1-18

NAMES OF FORMATIONS	TOP
Tussy	6110'
Viola	7026'
Bromide	7777'
McLish	8482'
Oil Creek	8610'
Joins	9030'
Arbuckle	9305'

FOR COMMISSION USE ONLY	
ITD on file	<input type="checkbox"/> YES <input type="checkbox"/> NO
APPROVED	DISAPPROVED
2) Reject Codes	

Were open hole logs run? ☒ yes ☐ no

Date Last log was run August 28, 2013

Was CO<sub>2</sub> encountered? ☐ yes ☒ no at what depths? \_\_\_\_\_

Was H<sub>2</sub>S encountered? ☐ yes ☒ no at what depths? \_\_\_\_\_

Were unusual drilling circumstances encountered? ☐ yes ☒ no

If yes, briefly explain below

Other remarks:

640 Acres

A 10x10 grid representing 640 acres. A thick vertical line separates the first 4 columns from the last 6 columns. The text '640 Acres' is centered above the grid.

Direction must be stated in degrees azimuth.  
Please note, the horizontal drainhole and its end point must be located within the boundaries of the lease or spacing unit.

640 Acres

640 Acres

SEC	TWP	RGE	COUNTY			
Spot Location				Feet From 1/4 Sec Lines	FSL	FWL
1/4	1/4	1/4	1/4			
Measured Total Depth		True Vertical Depth	BHL From Lease, Unit, or Property Line:			

LATERAL #1						
SEC	TWP	RGE	COUNTY			
Spot Location						
1/4	1/4	1/4	Feet From 1/4 Sec Lines	FSL	FWL	
Depth of Deviation		Radius of Turn	Direction	Total Length		
Measured Total Depth		True Vertical Depth	BHL From Lease, Unit, or Property Line:			

LATERAL #2						
SEC	TWP	RGE	COUNTY			
Spot Location			Feet From 1/4 Sec Lines		FSL	FWL
1/4	1/4	1/4	1/4			
Depth of Deviation		Radius of Turn	Direction	Total Length		
Measured Total Depth		True Vertical Depth	BHL From Lease, Unit, or Property Line:			

LATERAL #3						
SEC	TWP	RGE	COUNTY			
Spot Location						
1/4	1/4	1/4	Feet From 1/4 Sec Lines	FSL	FWL	
Depth of Deviation		Radius of Turn	Direction	Total Length		
Measured Total Depth		True Vertical Depth	BHL From Lease, Unit, or Property Line:			