

Oklahoma Corporation Commission  
Oil & Gas Conservation Division  
Post Office Box 52000  
Oklahoma City, Oklahoma 73152-2000  
Rule 165: 10-3-25

Form 1002A

API No.: 35043235450000

**Completion Report**

Spud Date: September 08, 2017

OTC Prod. Unit No.: 043-222696

Drilling Finished Date: November 02, 2017

1st Prod Date: December 18, 2017

Completion Date: December 15, 2017

**Drill Type:** HORIZONTAL HOLE

Min Gas Allowable: Yes

Well Name: JORDAN 24/13-19-17 1H

Purchaser/Measurer: ENABLE

Location: DEWEY 25 19N 17W  
SW NE NE NE  
355 FNL 600 FEL of 1/4 SEC  
Latitude: 36.09983484 Longitude: -98.95764628  
Derrick Elevation: 1959 Ground Elevation: 1929

First Sales Date: 12/18/2017

Operator: TAPSTONE ENERGY LLC 23467

100 E MAIN ST  
OKLAHOMA CITY, OK 73104-2509

Completion Type	
X	Single Zone
	Multiple Zone
	Commingled

Location Exception	
Order No	
677884	

Increased Density	
Order No	
670696	

Casing and Cement							
Type	Size	Weight	Grade	Feet	PSI	SAX	Top of CMT
SURFACE	13 3/8	48	J-55	395	674	349	SURFACE
INTERMEDIATE	9 5/8	40	L-80	6811	1973	1053	2000
PRODUCTION	5 1/2	20	J-110	20972	6900	3302	4600

Liner								
Type	Size	Weight	Grade	Length	PSI	SAX	Top Depth	Bottom Depth
There are no Liner records to display.								

**Total Depth: 20972**

Packer	
Depth	Brand & Type
10714	AS1-X

Plug	
Depth	Plug Type
There are no Plug records to display.	

Initial Test Data
-------------------

Test Date	Formation	Oil BBL/Day	Oil-Gravity (API)	Gas MCF/Day	Gas-Oil Ratio Cu FT/BBL	Water BBL/Day	Pumpin or Flowing	Initial Shut-In Pressure	Choke Size	Flow Tubing Pressure
Feb 22, 2018	MISSISSIPPIAN	251	42	3014	12008	1447	FLOWING		44	1606

<b>Completion and Test Data by Producing Formation</b>	
Formation Name: MISSISSIPPIAN	Code: 359MSSP
Class: OIL	

Spacing Orders	
Order No	Unit Size
669751	640
664101	640
677950	MULTIUNIT

Perforated Intervals	
From	To
10880	20972

Acid Volumes	
99,792 15% HCL	

Fracture Treatments	
468,377 BARRELS, 20,265,210 POUNDS PROPPANT	

Formation	Top
BASE HEEBNER	6527
DOUGLAS SANDS	6750
TONKAWA	6953
COTTAGE GROVE	7446
HOGSHOOTER	7733
OSWEGO	8184
CHESTER	9441
BASAL MANNING	10629
UPPER MERAMEC	10730
LOWER MERAMEC	10893

Were open hole logs run? No

Date last log run:

Were unusual drilling circumstances encountered? No

Explanation:

<b>Other Remarks</b>
OCC - EXCEPTION TO OAC 165:10-3-28, ORDER 672461.

<b>Lateral Holes</b>
Sec: 13 TWP: 19N RGE: 17W County: DEWEY  NE   NW   NE   NE  196 FNL   672 FEL of 1/4 SEC  Depth of Deviation: 9341 Radius of Turn: 1586 Direction: 359 Total Length: 10045  Measured Total Depth: 20972 True Vertical Depth: 10319 End Pt. Location From Release, Unit or Property Line: 196



# RECEIVED

Form 1002A  
Rev. 2009

MAR 20 2018

OKLAHOMA CORPORATION  
COMMISSION

API NO. 3504323545  
OTC PROD. UNIT NO. 043222696

PLEASE TYPE OR USE BLACK INK ONLY

NOTE:

Attach copy of original 1002A  
if recompletion or reentry.

OKLAHOMA CORPORATION COMMISSION  
Oil & Gas Conservation Division  
Post Office Box 52000  
Oklahoma City, Oklahoma 73152-2000  
Rule 165:10-3-25

☒ ORIGINAL  
☐ AMENDED (Reason) \_\_\_\_\_

## COMPLETION REPORT

### TYPE OF DRILLING OPERATION

☐ STRAIGHT HOLE ☐ DIRECTIONAL HOLE ☒ HORIZONTAL HOLE  
☐ SERVICE WELL

If directional or horizontal, see reverse for bottom hole location.

COUNTY	DEWEY	SEC	25	TWP	19N	RGE	17W
LEASE NAME	JORDAN 24/13-19-17			WELL NO.	1H		
SW 1/4	NE 1/4	NE 1/4	NE 1/4	NE 1/4	NE 1/4	NE 1/4	NE 1/4
ELEVATION	1959	Ground	1929	Latitude (if known)	36.09983484		
OPERATOR NAME	Tapstone Energy, LLC			OTC/OCC OPERATOR NO.	23467		
ADDRESS	PO BOX 1608						
CITY	Oklahoma City			STATE	OK	ZIP	73101-1608

SPUD DATE	9/8/2017
DRLG FINISHED DATE	11/2/2017
DATE OF WELL COMPLETION	12/15/2017
1st PROD DATE	12/18/2017
RECOMP DATE	
Longitude (if known)	-98.95764628

640 Acres


LOCATE WELL

### COMPLETION TYPE

<input checked="" type="checkbox"/> SINGLE ZONE
<input type="checkbox"/> MULTIPLE ZONE
Application Date
COMINGLED
Application Date
LOCATION
EXCEPTION ORDER
INCREASED DENSITY ORDER NO.

677824 F.O.  
672459 (Interim)  
670696 F.O.

### CASING & CEMENT (Form 1002C must be attached)

TYPE	SIZE	WEIGHT	GRADE	FEET	PSI	SAX	TOP OF CMT
CONDUCTOR							
SURFACE	13 3/8	48	J-55	395'	674	349	SURFACE
INTERMEDIATE	9 5/8	40	L-80	6,811'	1,973	1,053	2,000' EST
PRODUCTION	5 1/2	20	P-110	20,972'	6,900	3,302	4,600' EST
LINER							
TOTAL DEPTH							20,972'

PACKER @ 10,714' BRAND & TYPE AS1-X PLUG @ TYPE PLUG @ TYPE  
PACKER @ BRAND & TYPE PLUG @ TYPE PLUG @ TYPE

### COMPLETION & TEST DATA BY PRODUCING FORMATION

FORMATION	MISSISSIPPIAN				
SPACING & SPACING ORDER NUMBER	640 ac - 669751	664101-640	677950 Multunit		
CLASS: Oil, Gas, Dry, Inj, Disp, Comm Disp, Svc	OIL				
PERFORATED INTERVALS	10,880' - 20,972'				
ACID/VOLUME	99,792 15% HCl				
	468,377 BBLS				
FRACTURE TREATMENT (Fluids/Prop Amounts)	20,265,210# PROP				

Min Gas Allowable (165:10-17-7)

Gas Purchaser/Measurer  
First Sales Date

ENABLE  
12/18/2017

### INITIAL TEST DATA

INITIAL TEST DATE	2/22/2018
OIL-BBL/DAY	251
OIL-GRAVITY (API)	42
GAS-MCF/DAY	3014
GAS-OIL RATIO CU FT/BBL	12,008
WATER-BBL/DAY	1447
PUMPING OR FLOWING	FLOWING
INITIAL SHUT-IN PRESSURE	
CHOKE SIZE	44
FLOW TUBING PRESSURE	1606

AS SUBMITTED

A record of the formations drilled through, and pertinent remarks are presented on the reverse. I declare that I have knowledge of the contents of this report and am authorized by my organization to make this report, which was prepared by me or under my supervision and direction, with the data and facts stated herein to be true, correct, and complete to the best of my knowledge and belief.

Bryan Rother

3/20/2018 405-702-1600

SIGNATURE

NAME (PRINT OR TYPE)

DATE PHONE NUMBER

PO BOX 1608

Oklahoma City OK 73101-1608

REGULATORY@TAPSTONEENERGY.COM

ADDRESS

CITY

STATE

ZIP

EMAIL ADDRESS

## FORMATION RECORD

LEASE NAME JORDAN 24/13-19-17 WELL NO. 1H

FOR COMMISSION USE ONLY	
ITD on file <input type="checkbox"/> YES <input type="checkbox"/> NO	
APPROVED    DISAPPROVED	2) Reject Codes

Other remarks:

640 Acres

**BOTTOM HOLE LOCATION FOR DIRECTIONAL HOLE**

**BOTTOM HOLE LOCATION FOR HORIZONTAL HOLE: (LATERSALS)**

**LATERAL #1**

If more than three drainholes are proposed, attach a separate sheet indicating the necessary information.

Direction must be stated in degrees azimuth.

Please note, the horizontal drainhole and its end point must be located within the boundaries of the lease or spacing unit.

Directional surveys are required for all drainholes and directional wells.

640 Acres

**LATERAL #2**

**LATERAL #3**

LATERAL #3						
SEC	TWP	RGE	COUNTY			
Spot Location				Feet From 1/4 Sec Lines	FSL	FWL
1/4	1/4	1/4	1/4			
Depth of Deviation		Radius of Turn	Direction	Total Length		
Measured Total Depth		True Vertical Depth	BHL From Lease, Unit, or Property Line:			

# TOPOGRAPHIC LAND SURVEYORS OF OKLAHOMA

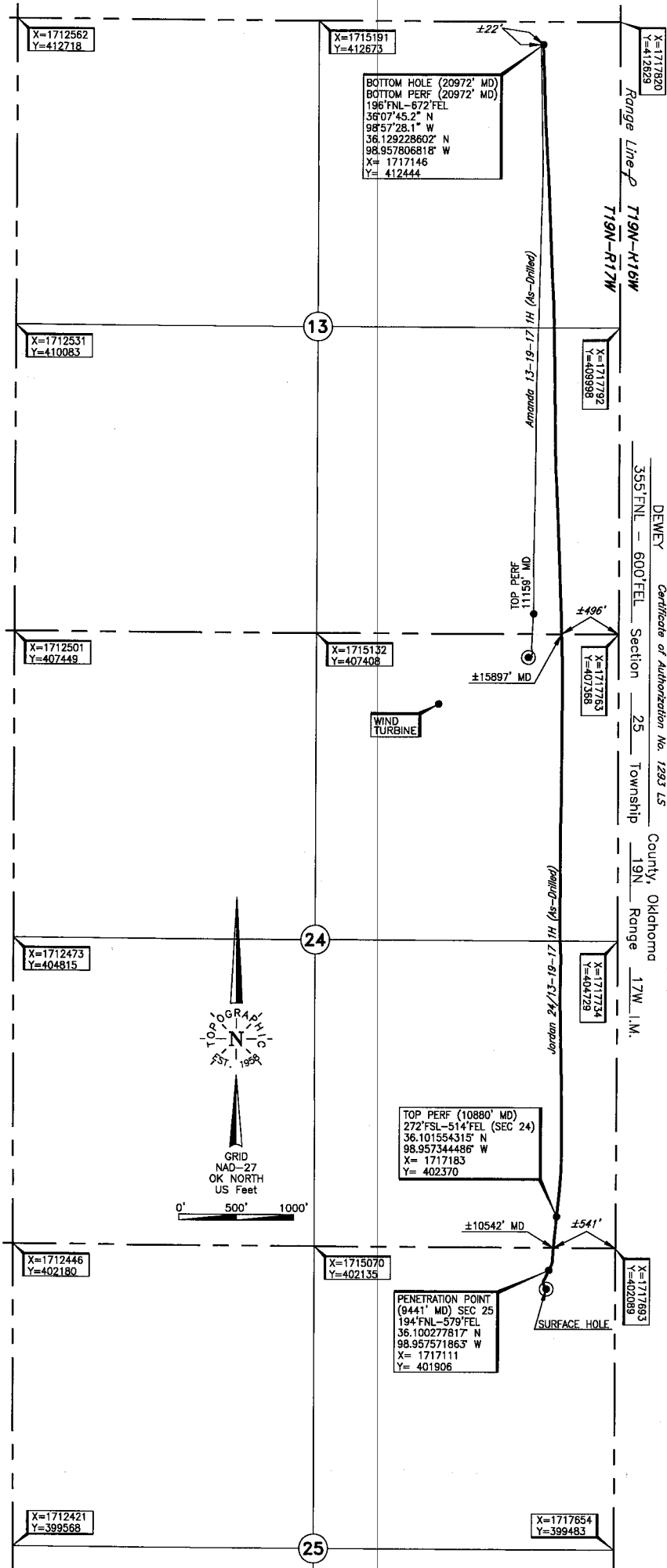
6709 NORTH CLASSEN BLVD., OKLA. CITY, OKLA. 73116 • LOCAL (405) 843-4847 • OUT OF STATE (800) 654-3219

DEWEY Certificate of Authorization No. 1293 LS

County, Oklahoma

Range Line of T19N-R17W

355' FNL - 600' FEL Section 25 Township 19N Range 17W I.M.



## ELEVATION:

1929' Gr. at Stake

Operator: TAPSTONE ENERGY

Lease Name: JORDAN 24/13-19-17

Well No.: 1H

Topography & Vegetation Loc. fell in sloped pasture, ±235' South of power line

Good Drill Site? Yes

Reference Stakes or Alternate Location Stakes Set None

Best Accessibility to Location From North off lease road

Distance & Direction from Hwy Jct or Town From Jct. St. Hwy. 51 E-W and US Hwy. 183 N-S, West of Sealing. OK, go ±3.0 mi. South on US Hwy. 183 to the approximate NE Cor. of Sec. 25-T19N-R17W.

DATUM: NAD-27

LAT: 36°05'59.4"N

LONG: 98°57'27.5"W

LAT: 36.099834840° N

LONG: 98.957646278° W

STATE PLANE COORDINATES: (US Feet)

ZONE: OK NORTH

X: 1717088

Y: 401745

(This information was gathered with a GPS receiver with ±1 foot Horiz./Vert. accuracy)

## FINAL AS-DRIILLED PLAT

285829 Date of Drawing: Dec. 20, 2017  
Invoice # 277290 Date Staked: Jun. 08, 2017 JP  
AS-DRIILLED INFORMATION  
FURNISHED BY TAPSTONE ENERGY