

Oklahoma Corporation Commission
Oil & Gas Conservation Division
Post Office Box 52000
Oklahoma City, Oklahoma 73152-2000
Rule 165: 10-3-25

Form 1002A

API No.: 35073258390000

Completion Report

Spud Date: December 10, 2017

OTC Prod. Unit No.: 073-223002

Drilling Finished Date: December 18, 2017

1st Prod Date: January 27, 2018

Completion Date: January 21, 2018

Drill Type: HORIZONTAL HOLE

Min Gas Allowable: Yes

Well Name: PERDUE 23-17-7 1H

Purchaser/Measurer: CHESAPEAKE OPERATING LLC

Location: KINGFISHER 26 17N 7W
NW NE NW NE
210 FNL 1830 FEL of 1/4 SEC
Derrick Elevation: 1107 Ground Elevation: 1080

First Sales Date: 01/29/2018

Operator: CHESAPEAKE OPERATING LLC 17441
PO BOX 18496
6100 N WESTERN AVE
OKLAHOMA CITY, OK 73154-0496

Completion Type		Location Exception		Increased Density	
X	Single Zone	Order No		Order No	
	Multiple Zone	675131		N/A	
	Commingled				

Casing and Cement							
Type	Size	Weight	Grade	Feet	PSI	SAX	Top of CMT
SURFACE	9 5/8	36	J-55	1495		595	SURFACE
PRODUCTION	7	26	P-110EC	7375		335	3664

Liner								
Type	Size	Weight	Grade	Length	PSI	SAX	Top Depth	Bottom Depth
LINER	4 1/2	13.50	P-110EC	4960	0	530	7052	12012

Total Depth: 12014

Packer		Plug	
Depth	Brand & Type	Depth	Plug Type
There are no Packer records to display.		11865	CIBP

Initial Test Data										
Test Date	Formation	Oil BBL/Day	Oil-Gravity (API)	Gas MCF/Day	Gas-Oil Ratio Cu FT/BBL	Water BBL/Day	Pumpin or Flowing	Initial Shut-In Pressure	Choke Size	Flow Tubing Pressure
Mar 11, 2018	OSWEGO	390	42	499	1279	707	PUMPING			85

Completion and Test Data by Producing Formation			
Formation Name: OSWEGO		Code: 404OSWG	Class: OIL
Spacing Orders		Perforated Intervals	
Order No	Unit Size	From	To
667564	640	7225	11861
Acid Volumes		Fracture Treatments	
216,125 GALLONS ACID		49,018 BARRELS FLUIDS, 3,845 POUNDS PROPPANT	

Formation	Top
OSWEGO	7168

Were open hole logs run? No
Date last log run:

Were unusual drilling circumstances encountered? No
Explanation:

Other Remarks
There are no Other Remarks.

Lateral Holes
Sec: 23 TWP: 17N RGE: 7W County: KINGFISHER NW NW NE NE 182 FNL 1272 FEL of 1/4 SEC Depth of Deviation: 5960 Radius of Turn: 823 Direction: 360 Total Length: 4846 Measured Total Depth: 12014 True Vertical Depth: 6783 End Pt. Location From Release, Unit or Property Line: 182

FOR COMMISSION USE ONLY	
Status: Accepted	1139224

API NO. 073-25839
OTC PROD. UNIT NO. 073-223002

PLEASE TYPE OR USE BLACK INK ONLY
NOTE:
Attach copy of original 1002A if recompletion or reentry.

OKLAHOMA CORPORATION COMMISSION

Oil & Gas Conservation Division

Post Office Box 52000
Oklahoma City, Oklahoma 73152-2000
Rule 165:10-3-25

RECEIVED

Form 1002A
Rev. 2009

MAR 28 2018

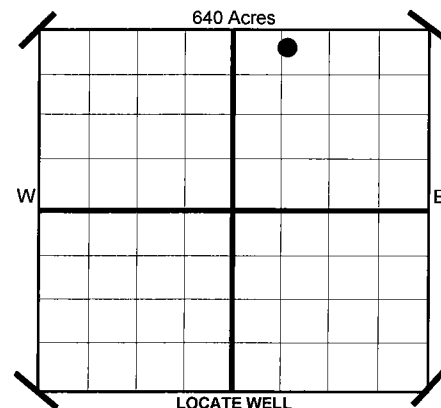
OKLAHOMA CORPORATION
COMMISSION

☒ ORIGINAL
☐ AMENDED
Reason Amended

TYPE OF DRILLING OPERATION
☐ STRAIGHT HOLE ☐ DIRECTIONAL HOLE ☒ HORIZONTAL HOLE
☐ SERVICE WELL
If directional or horizontal, see reverse for bottom hole location.

COUNTY Kingfisher SEC 26 TWP 17N RGE 7W
LEASE NAME Perdue 23-17-7
SHL NW 1/4 NE 1/4 NW 1/4 NE 1/4
ELEVATION 210 1/4 SEC 1,830
Derrick Fl 1,107 Ground 1,080
OPERATOR NAME CHESAPEAKE OPERATING, L.L.C.
ADDRESS P.O. BOX 18496
CITY OKLAHOMA CITY STATE OK ZIP 73154

COMPLETION REPORT
SPUD DATE 12/10/2017
DRLG FINISHED DATE 12/18/2017
DATE OF WELL COMPLETION 1/21/2018
1ST PROD DATE 1/27/2018
RECOMP DATE
Longitude (if Known)
OTC/OCC OPERATOR NO. 17441



COMPLETION TYPE

☒ SINGLE ZONE
☐ MULTIPLE ZONE
☐ COMMINGLED
LOCATION EXCEPTION ORDER NO. 675131 F.O.
INCREASED DENSITY ORDER NO. N/A

CASING & CEMENT (Form 1002C must be attached)

TYPE	SIZE	WEIGHT	GRADE	FEET	PSI	SAX	TOP
CONDUCTOR							
SURFACE	9-5/8"	36#	J-55	1,495		595	Surface
INTERMEDIATE							
PRODUCTION	7"	26#	P-110EC	7,375		335	3,664
LINER	4-1/2"	13.50#	P-110EC	7,052-12,012		530	7,052
TOTAL DEPTH							12,014

PACKER @ BRAND & TYPE
PACKER @ BRAND & TYPE

PLUG @ TYPE
PLUG @ TYPE
PLUG @ 11,865 TYPE CIBP
PLUG @ TYPE

COMPLETION & TEST DATA BY PRODUCING FORMATION

FORMATION Oswego
SPACING & SPACING 640
ORDER NUMBER 667564
CLASS: Oil, Gas, Dry, Inj. Oil
Disp, Comm Disp, Svc
PERFORATED INTERVALS 7,225 - 11,861
ACID/VOLUME 216,125 gals acid
FRACTURE TREATMENT 49,018 bbls fluids
(Fluids/Prop Amounts) 3,845# proppant

Minimum Gas Allowable (165:10-17-7)

Gas Purchaser/Measurer

Chesapeake Operating, L.L.C.

☒

OR

1st Sales Date

1/29/2018

INITIAL TEST DATA

Oil Allowable (165:10-13-3)

INITIAL TEST DATE 3/11/2018
OIL-BBL/DAY 390
OIL-GRAVITY (API) 42
GAS-MCF/DAY 499
GAS-OIL RATIO CU FT/BBL 1,279
WATER-BBL/DAY 707
PUMPING OR FLOWING Pumping
INITIAL SHUT-IN PRESSURE
CHOKE SIZE
FLOW TUBING PRESSURE 85

AS SUBMITTED

A record of the formations drilled through, and pertinent remarks are presented on the reverse. I declare that I have knowledge of the contents of this report and am authorized by my organization to make this report, which was prepared by me or under my supervision and direction, with the data and facts stated herein to be true, correct, and complete to the best of my knowledge and belief.

Juanita Cooper
SIGNATURE
P.O. BOX 18496
ADDRESS
OKLAHOMA CITY
CITY
OK
STATE
73154
ZIP
3/27/2018
DATE
405-848-8000
PHONE NUMBER
juanita.cooper@chk.com
EMAIL ADDRESS

Give formation names and tops, if available, or descriptions and thickness of formations drilled through. Show intervals cored or drillstem tested.

WELL NO. 1H

NAMES OF FORMATIONS	TOP
Oswego	7,168

FOR COMMISSION USE ONLY	
ITD on file	<input type="checkbox"/> YES <input type="checkbox"/> NO
APPROVED	DISAPPROVED
<div style="border-bottom: 1px solid black; margin-bottom: 10px;"></div>	2) Reject Codes <div style="border-bottom: 1px solid black; margin-bottom: 5px;"></div> <div style="border-bottom: 1px solid black; margin-bottom: 5px;"></div> <div style="border-bottom: 1px solid black; margin-bottom: 5px;"></div> <div style="border-bottom: 1px solid black; margin-bottom: 5px;"></div> <div style="border-bottom: 1px solid black; margin-bottom: 5px;"></div>

Were open hole logs run?	<u> </u>	yes	<u>X</u>	no	
Date Last log was run	N/A				
Was CO ₂ encountered?	<u> </u>	yes	<u>X</u>	no	at what depths?
Was H ₂ S encountered?	<u> </u>	yes	<u>X</u>	no	at what depths?
Were unusual drilling circumstances encountered?	<u> </u>	yes	<u>X</u>	no	
If yes, briefly explain.					

Other remarks:

640 Acres

Direction must be stated in degrees azimuth.
Please note, the horizontal drainhole and its end point must be located within the boundaries of the lease or spacing unit.

Directional surveys are required for all drainholes and directional wells.
640 Acres

SEC	TWP	RGE	COUNTY
Spot Location			
1/4	1/4	1/4	1/4
Measured Total Depth	True Vertical Depth	Feet From 1/4 Sec Lines FSL FWL	
		BHL From Lease, Unit, or Property Line:	

LATERAL #1									
SEC	23	TWP	17N	RGE	7W	COUNTY Kingfisher			
Spot Location NW 1/4 NW 1/4 NE 1/4 NE 1/4						Feet From 1/4 Sec Lines	FNL 182	FEL 1,272	
Depth of Deviation 5,960				Radius of Turn 823		Direction 360	Total Length 4,846		
Measured Total Depth 12,014				True Vertical Depth 6,783		BHL From Lease, Unit, or Property Line: 182			

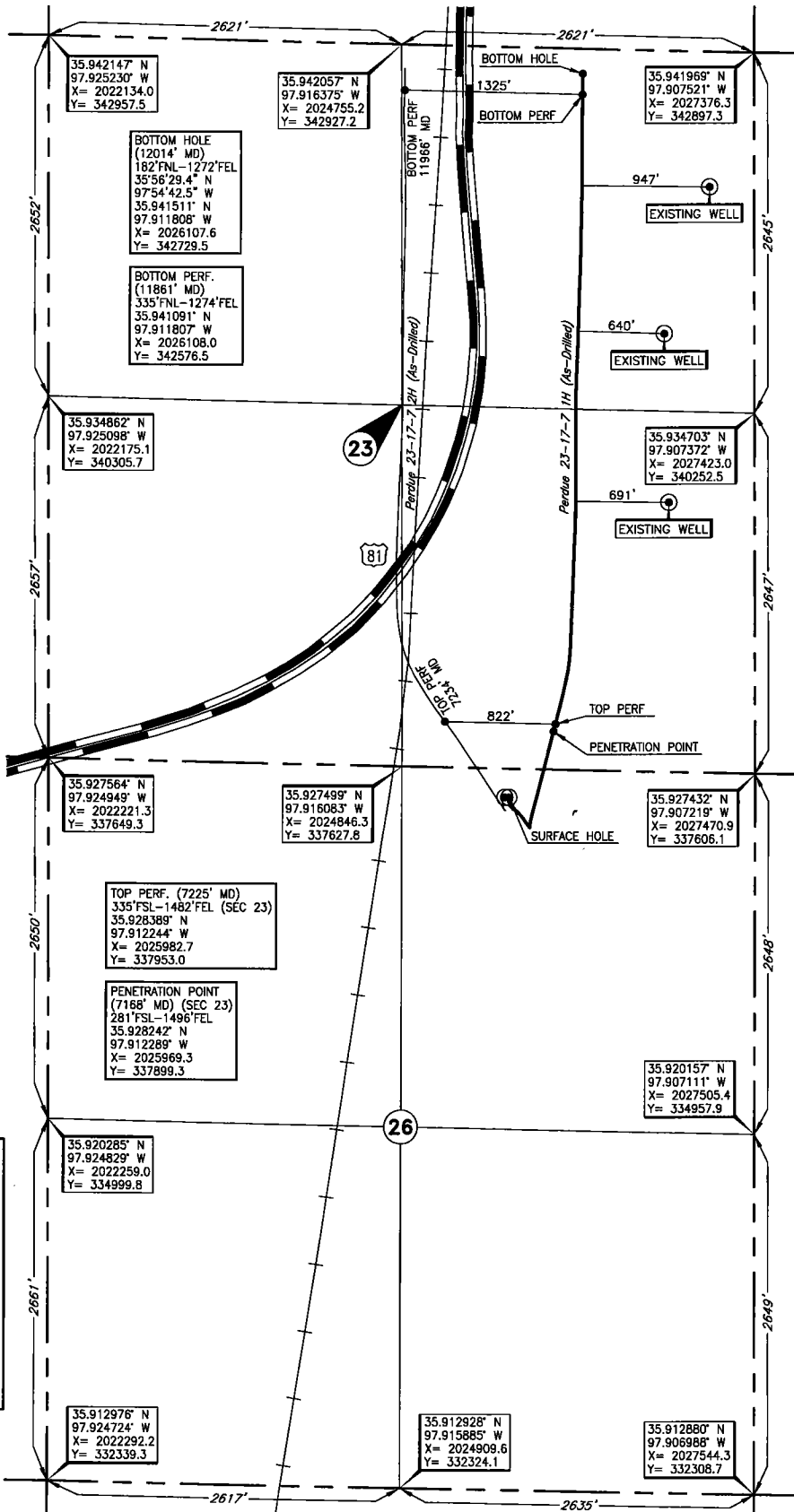
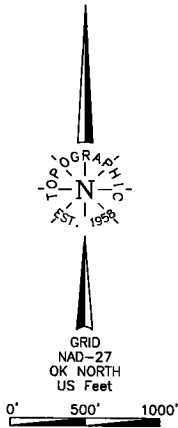
SEC	TWP	RGE	COUNTY				
Spot Location	1/4	1/4	1/4	1/4	Feet From 1/4 Sec Lines	FSL	FWL
Depth of Deviation	Radius of Turn		Direction		Total Length		
Measured Total Depth	True Vertical Depth		BHL From Lease, Unit, or Property Line:				

LATERAL #3		TWP		RGE		COUNTY	
Spot Location		1/4		1/4		1/4	
1/4		1/4		1/4		1/4	
Feet From 1/4 Sec Lines		FSL		FWL			
Depth of Deviation		Radius of Turn		Direction		Total Length	
Measured Total Depth		True Vertical Depth		BHL From Lease, Unit, or Property Line:			

KINGFISHER

County, Oklahoma

210'FNL-1830'FEL Section 26 Township 17N Range 7W I.M.



Operator: CHESAPEAKE OPERATING, L.L.C.
 Lease Name: PERDUE 23-17-7
 Topography & Vegetation: Loc. fell on level pad, ±161' South of E-W pipeline, ±239' North of E-W SMD
 Good Drill Site? ☐ Yes ☐ No
 Reference Stakes or Alternate Location: Stakes Set ☐ None ☐ Yes
 Best Accessibility to Location: From North off county road.
 Distance & Direction from Hwy Jct or Town: From Kingfisher, OK, go North on US Hwy. 81 ±3.7 miles, then East ±1.5 miles, then North ±1 mile to the NE Cor. of Sec. 26-17N-R7W.
 ELEVATION: 1080' Gr. at Level Pad

DATUM: NAD-27
 LAT: 35°55'36.8" N
 LONG: 97°54'48.2" W
 LAT: 35°52'60.2" N
 LONG: 97°51'33.9" W
 STATE PLANE
 COORDINATES: (US Feet)
 ZONE: OK NORTH
 X: 202564.3
 Y: 337411.3

288161 Date of Drawing: Feb. 05, 2018
 Invoice # 283385 Date Staked: Oct. 31, 2017 JP

FINAL AS-DRILLED PLAT

AS-DRILLED INFORMATION
 FURNISHED BY CHESAPEAKE OPERATING, L.L.C.