

Oklahoma Corporation Commission
Oil & Gas Conservation Division
Post Office Box 52000
Oklahoma City, Oklahoma 73152-2000
Rule 165: 10-3-25

Form 1002A

API No.: 35045237080000

Completion Report

Spud Date: December 16, 2017

OTC Prod. Unit No.: 045-223198

Drilling Finished Date: January 14, 2018

1st Prod Date: March 14, 2018

Completion Date: March 13, 2018

Drill Type: HORIZONTAL HOLE

Min Gas Allowable: Yes

Well Name: JUANITA 1H-7

Purchaser/Measurer: MARKWEST

Location: ELLIS 18 18N 22W
N2 N2 N2 NE
250 FNL 1320 FEL of 1/4 SEC
Latitude: 36.04218 Longitude: -99.58222
Derrick Elevation: 2342 Ground Elevation: 2315

First Sales Date: 03/12/2018

Operator: VALPOINT OPERATING LLC 23241

600 S TYLER ST STE 1701
AMARILLO, TX 79101-2353

Completion Type		Location Exception		Increased Density	
X	Single Zone	Order No		Order No	
	Multiple Zone	674209		There are no Increased Density records to display.	
	Commingled				

Casing and Cement							
Type	Size	Weight	Grade	Feet	PSI	SAX	Top of CMT
CONDUCTOR	20	54	H-40	120			SURFACE
SURFACE	13 3/8	48	J-55	647		515	SURFACE
INTERMEDIATE	9 5/8	40	N80	4237		850	10
INTERMEDIATE	7	26	P-110	9806		385	6348
PRODUCTION	5 1/2	20	P-110	14537		415	8590

Liner								
Type	Size	Weight	Grade	Length	PSI	SAX	Top Depth	Bottom Depth
There are no Liner records to display.								

Total Depth: 14537

Packer		Plug	
Depth	Brand & Type	Depth	Plug Type
There are no Packer records to display.		There are no Plug records to display.	

Initial Test Data										
Test Date	Formation	Oil BBL/Day	Oil-Gravity (API)	Gas MCF/Day	Gas-Oil Ratio Cu FT/BBL	Water BBL/Day	Pumpin or Flowing	Initial Shut-In Pressure	Choke Size	Flow Tubing Pressure
Mar 14, 2018	OSWEGO	176	42.5	671	3813	2498	FLOWING	1980	50	420

Completion and Test Data by Producing Formation									
Formation Name: OSWEGO				Code: 404OSWG			Class: OIL		
Spacing Orders				Perforated Intervals					
Order No		Unit Size		From			To		
103068		640		9856			14451		
Acid Volumes				Fracture Treatments					
92,946 GALLONS				7,216,650 GALLONS, 816,915 POUNDS 100 MESH, 2,855,977 POUNDS 40/70					

Formation	Top
BASE HEEBNER	7321
DOUGLAS	7354
TONKAWA	7903
COTTAGE GROVE	8474
CLEVELAND	9001
BIG LIME	9353
OSWEGO	9482

Were open hole logs run? No

Date last log run:

Were unusual drilling circumstances encountered? No

Explanation:

Other Remarks
PRODUCTION CASING - 5-1/2" 20# P-110 @ 8,948' AND 4-1/2" 11.6# P-110 @ 8,948' - 14,537' MD. FRAC COMPLETED ON MARCH 6, 2018. FIRST GAS SALES MARCH 12, 2018 AT 8:00 PM. STARTED THROUGH PRODUCTION EQUIPMENT ON MARCH 13, 2018 AND FIRST SALES ON MARCH 14, 2018. OCC - THIS DOCUMENT IS ACCEPTED BASED ON THE DATA SUBMITTED THE FINAL LOCATION EXCEPTION HAS NOT BEEN ISSUED.

Lateral Holes
Sec: 7 TWP: 18N RGE: 22W County: ELLIS
NE NE NW NE
297 FNL 1328 FEL of 1/4 SEC
Depth of Deviation: 8923 Radius of Turn: 1322 Direction: 356 Total Length: 4292
Measured Total Depth: 14537 True Vertical Depth: 9469 End Pt. Location From Release, Unit or Property Line: 297

FOR COMMISSION USE ONLY
Status: Accepted
1139603

RECEIVED

Form 1002A
Rev. 2009

APR 23 2018

OKLAHOMA CORPORATION
COMMISSION

OKLAHOMA CORPORATION COMMISSION
Oil & Gas Conservation Division
Post Office Box 52000
Oklahoma City, Oklahoma 73152-2000
Rule 165:10-3-25

COMPLETION REPORT

API NO. 35-045-23708
OTC PROD. UNIT NO. 045223198

PLEASE TYPE OR USE BLACK INK ONLY
NOTE:

Attach copy of original 1002A
if recompletion or reentry.

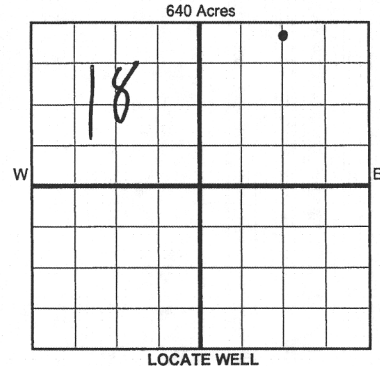
☒ ORIGINAL
☐ AMENDED (Reason)

TYPE OF DRILLING OPERATION

☐ STRAIGHT HOLE ☐ DIRECTIONAL HOLE ☒ HORIZONTAL HOLE
☐ SERVICE WELL

If directional or horizontal, see reverse for bottom hole location.

COUNTY	Ellis	SEC	18	TWP	18N	RGE	22W	SPUD DATE	12/16/2017
LEASE NAME	Juanita			WELL NO.	1H-7			DRLG FINISHED DATE	1/14/2018
N2 1/4	N2 1/4	N2 1/4	NE 1/4	1/4 SEC	2390'	1/4 SEC	1320'	DATE OF WELL COMPLETION	3/13/2018
ELEVATION Derrick FL	2342'	Ground	2315'	Latitude (if known)	-99.58222			1st PROD DATE	3/14/2018
OPERATOR NAME	VALPOINT OPERATING, LLC			OTC/OCC OPERATOR NO.	23241				
ADDRESS	600 S. Tyler St, Suite 1701								
CITY	Amarillo			STATE	Texas		ZIP	79101	



COMPLETION TYPE

<input checked="" type="checkbox"/> SINGLE ZONE
<input type="checkbox"/> MULTIPLE ZONE
Application Date
<input type="checkbox"/> COMMINGLED
Application Date
LOCATION
EXCEPTION ORDER
INCREASED DENSITY ORDER NO.

674209 & O.

CASING & CEMENT (Form 1002C must be attached)

TYPE	SIZE	WEIGHT	GRADE	FEET	PSI	SAX	TOP OF CMT
CONDUCTOR	20"	54#	H-40	120'			Surface
SURFACE	13-3/8"	48#	J-55	647'		515	Surface
INTERMEDIATE	9-5/8"	40#	N-80	4,237'		850	10'
PRODUCTION	7"	26#	P-110	9,806'		385	6,348'
LINER	5-1/2"	20#	P-110	14,537'		415	8,590'

PACKER @ _____ BRAND & TYPE _____ PLUG @ _____ TYPE _____ PLUG @ _____ TYPE _____
PACKER @ _____ BRAND & TYPE _____ PLUG @ _____ TYPE _____ PLUG @ _____ TYPE _____

TOTAL DEPTH 14537

COMPLETION & TEST DATA BY PRODUCING FORMATION

FORMATION	Oswego
SPACING & SPACING ORDER NUMBER	103068 (640 ac)
CLASS: Oil, Gas, Dry, Inj, Disp, Comm Disp, Svc	Oil
PERFORATED INTERVALS	Last: 14,451' MD First: 9,856' MD
ACID/VOLUME	92,946 gals
FRACTURE TREATMENT (Fluids/Prop Amounts)	7,216,650 gals 816,915 # 100 Mesh 2,855,977 # 40/70

Reported to FracFocus

☒ Min Gas Allowable (165:10-17-7)
OR
☐ Oil Allowable (165:10-13-3)

Gas Purchaser/Measurer
First Sales Date

Markwest
3/12/2018

INITIAL TEST DATE	3/14/2018
OIL-BBL/DAY	176
OIL-GRAVITY (API)	42.5
GAS-MCF/DAY	671
GAS-OIL RATIO CU FT/BBL	3813
WATER-BBL/DAY	2498
PUMPING OR FLOWING	Flowing
INITIAL SHUT-IN PRESSURE	1980
CHOKE SIZE	50
FLOW TUBING PRESSURE	420

AS SUBMITTED

A record of the formations drilled through, and pertinent remarks are presented on the reverse. I declare that I have knowledge of the contents of this report and am authorized by my organization to make this report, which was prepared by me or under my supervision and direction, with the data and facts stated herein to be true, correct, and complete to the best of my knowledge and belief.

Matt Ramsden SIGNATURE
600 S. Tyler St, Suite 1701 ADDRESS
Amarillo CITY TX 79101 STATE ZIP
4/2/2018 DATE
806-376-4675 PHONE NUMBER
matt@valpointoperating.com EMAIL ADDRESS

PLEASE TYPE OR USE BLACK INK ONLY

FORMATION RECORD

Give formation names and tops, if available, or descriptions and thickness of formations drilled through. Show intervals cored or drillstem tested.

NAMES OF FORMATIONS	TOP
Base Heebner	7321' (-4979')
Douglas	7354' (-5012')
Tonkawa	7903' (-5561')
Cottage Grove	8474' (-6132')
Cleveland	9001' (-6659')
Big Lime	9353' (-7011')
Owsego	9482' (-7140')

LEASE NAME _____ WELL NO. _____

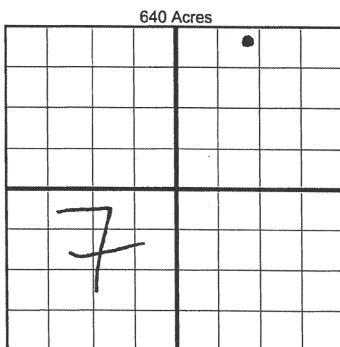
FOR COMMISSION USE ONLY		
ITD on file	<input type="checkbox"/> YES	<input type="checkbox"/> NO
APPROVED	DISAPPROVED	2) Reject Codes

Were open hole logs run?	_____ yes	<u>X</u> no
Date Last log was run	_____	
Was CO ₂ encountered?	_____ yes	<u>X</u> no at what depths? _____
Was H ₂ S encountered?	_____ yes	<u>X</u> no at what depths? _____
Were unusual drilling circumstances encountered?	_____ yes	<u>X</u> no
If yes, briefly explain below _____		

Other remarks:

Production Casing - 5-1/2" 20# P-110 @ 8,948' and 4-1/2" 11.6# P-110 @ 8,948'-14,537' MD.

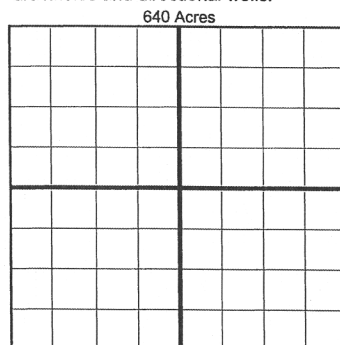
Frac completed on 3/6/2018. First gas sales 3/12/2018 at 8:00 pm. Started through production equipment on 3/13/2018 and first sales on 3/14/2018.



If more than three drainholes are proposed, attach a separate sheet indicating the necessary information.

Direction must be stated in degrees azimuth. Please note, the horizontal drainhole and its end point must be located within the boundaries of the lease or spacing unit.

Directional surveys are required for all drainholes and directional wells.



BOTTOM HOLE LOCATION FOR DIRECTIONAL HOLE

SEC	TWP	RGE	COUNTY
Spot Location	1/4	1/4	1/4
Measured Total Depth	True Vertical Depth	BHL From Lease, Unit, or Property Line:	

BOTTOM HOLE LOCATION FOR HORIZONTAL HOLE: (LATERALS)

LATERAL #1			
SEC	TWP	RGE	COUNTY
7	18N	22W	Ellis
Spot Location	NE 1/4	NW 1/4	NE 1/4
Depth of Deviation	8,923'	Radius of Turn	1,322'
Measured Total Depth	14,537'	True Vertical Depth	9,469'
Feet From 1/4 Sec Lines	356.4	Total Length	4,292'
BHL From Lease, Unit, or Property Line:	297'		

LATERAL #2

SEC	TWP	RGE	COUNTY
Spot Location	1/4	1/4	1/4
Depth of Deviation	Radius of Turn	Direction	Total Length
Measured Total Depth	True Vertical Depth	BHL From Lease, Unit, or Property Line:	

LATERAL #3

SEC	TWP	RGE	COUNTY
Spot Location	1/4	1/4	1/4
Depth of Deviation	Radius of Turn	Direction	Total Length
Measured Total Depth	True Vertical Depth	BHL From Lease, Unit, or Property Line:	