

Oklahoma Corporation Commission  
Oil & Gas Conservation Division  
Post Office Box 52000  
Oklahoma City, Oklahoma 73152-2000  
Rule 165: 10-3-25

Form 1002A

API No.: 35137022930001

**Completion Report**

Spud Date: April 27, 1949

OTC Prod. Unit No.: 137-165030

Drilling Finished Date: May 27, 1949

**Amended**

1st Prod Date: June 07, 1949

Amend Reason: TEMPORARILY ABANDONED

Completion Date: June 01, 1947

Recomplete Date: April 23, 2018

**Drill Type: STRAIGHT HOLE**

Well Name: HUMPHREY 6-A

Purchaser/Measurer:

Location: STEPHENS 3 1S 4W  
N2 SW NE  
365 FSL 330 FWL of 1/4 SEC  
Derrick Elevation: 998 Ground Elevation: 989

First Sales Date:

Operator: SAJAC ENERGY COMPANY LLC 19467  
PO BOX 207  
1032 MAIN PL STE 400  
DUNCAN, OK 73534-0207

Completion Type		Location Exception		Increased Density	
X	Single Zone	Order No		Order No	
	Multiple Zone	There are no Location Exception records to display.		There are no Increased Density records to display.	
	Commingled				

Casing and Cement							
Type	Size	Weight	Grade	Feet	PSI	SAX	Top of CMT
SURFACE	10 3/4			359		350	SURFACE
PRODUCTION	5 1/2			4029		175	

Liner								
Type	Size	Weight	Grade	Length	PSI	SAX	Top Depth	Bottom Depth
There are no Liner records to display.								

**Total Depth: 4044**

Packer		Plug	
Depth	Brand & Type	Depth	Plug Type
There are no Packer records to display.		There are no Plug records to display.	

Initial Test Data										
Test Date	Formation	Oil BBL/Day	Oil-Gravity (API)	Gas MCF/Day	Gas-Oil Ratio Cu FT/BBL	Water BBL/Day	Pumpin or Flowing	Initial Shut-In Pressure	Choke Size	Flow Tubing Pressure
There are no Initial Data records to display.										

Completion and Test Data by Producing Formation			
Formation Name: DEESE		Code: 404DEESS	Class: TA
<b>Spacing Orders</b>		<b>Perforated Intervals</b>	
<b>Order No</b>	<b>Unit Size</b>	<b>From</b>	<b>To</b>
There are no Spacing Order records to display.		4028	4038
<b>Acid Volumes</b>		<b>Fracture Treatments</b>	
There are no Acid Volume records to display.		There are no Fracture Treatments records to display.	

Formation	Top
DEESE	4025

Were open hole logs run? Yes  
Date last log run: May 28, 1949

Were unusual drilling circumstances encountered? No  
Explanation:

Other Remarks
There are no Other Remarks.

FOR COMMISSION USE ONLY	
Status: Accepted	1139616

# RECEIVED

APR 23 2018

Form 1002A  
Rev. 2009

## OKLAHOMA CORPORATION COMMISSION

API NO. **137-02293**  
OTC PROD. UNIT NO. **137-165030**

PLEASE TYPE OR USE BLACK INK ONLY

NOTE:

Attach copy of original 1002A  
if recompletion or reentry.

OKLAHOMA CORPORATION COMMISSION  
Oil & Gas Conservation Division  
Post Office Box 52000  
Oklahoma City, Oklahoma 73152-2000  
Rule 165:10-3-25

☐ ORIGINAL  
☒ AMENDED (Reason)

T.A.

### COMPLETION REPORT

#### TYPE OF DRILLING OPERATION

☒ STRAIGHT HOLE ☐ DIRECTIONAL HOLE ☐ HORIZONTAL HOLE  
☐ SERVICE WELL

If directional or horizontal, see reverse for bottom hole location.

COUNTY **Stephens** SEC **3** TWP **15** RGE **4W**

LEASE NAME **Humphrey** WELL NO. **6A**

**N/2 SW 1/4 SW 1/4 NE 1/4** FSL OF 1/4 SEC **365** FWL OF 1/4 SEC **330**

ELEVATION Derrick FL **998** Ground **989** Latitude (if known)

OPERATOR NAME **SAJAC Energy Co. LLC** OTC/OCC OPERATOR NO. **19467**

ADDRESS **P.O. Box 207**

CITY **Duncan** STATE **OK** ZIP **73534**

SPUD DATE **4/27/49**

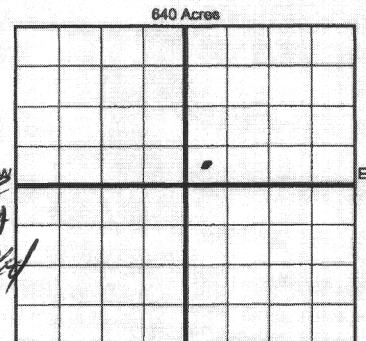
DRLG FINISHED DATE **5/27/49**

DATE OF WELL COMPLETION **6/1/49**

1st PROD DATE **6/7/49**

RECOMP DATE **4-23-2018**

Longitude (if known)



LOCATE WELL

#### COMPLETION TYPE

☒ SINGLE ZONE  
☐ MULTIPLE ZONE  
Application Date  
☐ COMMINGLED  
Application Date  
LOCATION  
EXCEPTION ORDER  
INCREASED DENSITY  
ORDER NO.

#### CASING & CEMENT (Form 1002C must be attached)

TYPE	SIZE	WEIGHT	GRADE	FEET	PSI	SAX	TOP OF CMT
CONDUCTOR							
SURFACE	<b>10 3/4</b>			<b>359'</b>		<b>350</b>	<b>surface</b>
INTERMEDIATE							
PRODUCTION	<b>5 1/2</b>			<b>4029'</b>		<b>175</b>	
LINER							
							<b>4044'</b>

PACKER @ \_\_\_\_\_ BRAND & TYPE \_\_\_\_\_ PLUG @ \_\_\_\_\_ TYPE \_\_\_\_\_ PLUG @ \_\_\_\_\_ TYPE \_\_\_\_\_  
PACKER @ \_\_\_\_\_ BRAND & TYPE \_\_\_\_\_ PLUG @ \_\_\_\_\_ TYPE \_\_\_\_\_ PLUG @ \_\_\_\_\_ TYPE \_\_\_\_\_

#### COMPLETION & TEST DATA BY PRODUCING FORMATION

FORMATION	<b>Deese</b>						
SPACING & SPACING ORDER NUMBER							
CLASS: Oil, Gas, Dry, Inj, Disp, Comm Disp, Svc	<b>Oil TA</b>						
PERFORATED INTERVALS	<b>4028-4038</b>						
ACID/VOLUME							
FRACTURE TREATMENT (Fluids/Prop Amounts)							

Min Gas Allowable (165:10-17-7)

Gas Purchaser/Measurer

☐

OR

First Sales Date

#### INITIAL TEST DATA

INITIAL TEST DATE	<b>6/7/49</b>						
OIL-BBL/DAY	<b>143</b>						
OIL-GRAVITY (API)	<b>36</b>						
GAS-MCF/DAY	<b>0</b>						
GAS-OIL RATIO CU FT/BBL	<b>0</b>						
WATER-BBL/DAY	<b>0</b>						
PUMPING OR FLOWING	<b>5WAB</b>						
INITIAL SHUT-IN PRESSURE							
CHOKE SIZE							
FLOW TUBING PRESSURE							

**AS SUBMITTED**

A record of the formations drilled through, and pertinent remarks are presented on the reverse. I declare that I have knowledge of the contents of this report and am authorized by my organization to make this report, which was prepared by me or under my supervision and direction, with the data and facts stated herein to be true, correct, and complete to the best of my knowledge and belief.

**Mike Fennell** SIGNATURE **Mike Fennell** NAME (PRINT OR TYPE) **4-20-18** DATE **58** PHONE NUMBER  
**Box # 207** ADDRESS **Duncan** CITY **OK** STATE **73534** ZIP  EMAIL ADDRESS

Give formation names and tops, if available, or descriptions and thickness of formations drilled through. Show intervals cored or drillstem tested.

WELL NO. 6-A

NAMES OF FORMATIONS	TOP
<div data-bbox="177 279 276 319"><del>4025</del></div> <div data-bbox="310 270 420 312">Deese</div>	<div data-bbox="600 273 701 308">4025</div> <div data-bbox="597 329 698 367">4044</div>

FOR COMMISSION USE ONLY	
ITD on file	<input type="checkbox"/> YES <input type="checkbox"/> NO
APPROVED	DISAPPROVED
2) Reject Codes	

Were open hole logs run? ☒ yes ☐ no

Date Last log was run ~~4-14-50~~ 5-28-49

Was CO<sub>2</sub> encountered? ☐ yes ☒ no at what depths? \_\_\_\_\_

Was H<sub>2</sub>S encountered? ☐ yes ☒ no at what depths? \_\_\_\_\_

Were unusual drilling circumstances encountered? ☐ yes ☒ no

If yes, briefly explain below \_\_\_\_\_

Other remarks:

640 Acres

The diagram shows a large square divided into four equal quadrants by a thick vertical line and a thick horizontal line. Each quadrant is further divided into a 5x5 grid of smaller squares. The top-left quadrant is shaded gray, while the other three quadrants are white. The text '640 Acres' is centered at the top of the grid.

Direction must be stated in degrees azimuth.  
Please note, the horizontal drainhole and its end  
point must be located within the boundaries of the  
lease or spacing unit.

640 Acres

A 10x10 grid representing 640 acres. The grid is divided into four 5x5 quadrants by a thick horizontal and vertical line intersecting at the center. The label '640 Acres' is positioned at the top center of the grid.

SEC	TWP	RGE	COUNTY
Spot Location			
1/4	1/4	1/4	1/4
Measured Total Depth		True Vertical Depth	BHL From Lease, Unit, or Property Line:

LATERAL #1						
SEC	TWP	RGE	COUNTY			
Spot Location			Feet From 1/4 Sec Lines		FSL	FWL
1/4		1/4	1/4			
Depth of Deviation		Radius of Turn	Direction		Total Length	
Measured Total Depth		True Vertical Depth	BHL From Lease, Unit, or Property Line:			

SEC	TWP	RGE	COUNTY			
Spot Location		1/4	1/4	Feet From 1/4 Sec Lines	FSL	FWL
Depth of Deviation		Radius of Turn	Direction	Total Length		
Measured Total Depth		True Vertical Depth	BHL From Lease, Unit, or Property Line:			

SEC	TWP	RGE	COUNTY		
Spot Location			Feet From 1/4 Sec Lines	FSL	FWL
1/4	1/4	1/4	1/4		
Depth of Deviation	Radius of Turn		Direction	Total Length	
Measured Total Depth		True Vertical Depth	BHL From Lease, Unit, or Property Line:		