

Oklahoma Corporation Commission  
Oil & Gas Conservation Division  
Post Office Box 52000  
Oklahoma City, Oklahoma 73152-2000  
Rule 165: 10-3-25

Form 1002A

API No.: 35137022940001

**Completion Report**

Spud Date: September 04, 1949

OTC Prod. Unit No.: 137-165030

Drilling Finished Date: September 21, 1949

1st Prod Date: September 28, 1949

**Amended**

Completion Date: September 26, 1949

Amend Reason: TEMPORARILY ABANDONED

Recomplete Date: April 23, 2018

**Drill Type: STRAIGHT HOLE**

Well Name: HUMPHREY 4-A

Purchaser/Measurer:

Location: STEPHENS 3 1S 4W  
SW NE SW NE  
960 FSL 960 FWL of 1/4 SEC  
Derrick Elevation: 1011 Ground Elevation: 1003

First Sales Date:

Operator: SAJAC ENERGY COMPANY LLC 19467  
PO BOX 207  
1032 MAIN PL STE 400  
DUNCAN, OK 73534-0207

Completion Type		Location Exception		Increased Density	
X	Single Zone	Order No		Order No	
	Multiple Zone	There are no Location Exception records to display.		There are no Increased Density records to display.	
	Commingled				

Casing and Cement							
Type	Size	Weight	Grade	Feet	PSI	SAX	Top of CMT
SURFACE	10 3/4	33.75	J & L	359		300	SURFACE
PRODUCTION	5 1/2	14	J & L	3972		175	

Liner								
Type	Size	Weight	Grade	Length	PSI	SAX	Top Depth	Bottom Depth
There are no Liner records to display.								

**Total Depth: 3999**

Packer		Plug	
Depth	Brand & Type	Depth	Plug Type
There are no Packer records to display.		There are no Plug records to display.	

Initial Test Data										
Test Date	Formation	Oil BBL/Day	Oil-Gravity (API)	Gas MCF/Day	Gas-Oil Ratio Cu FT/BBL	Water BBL/Day	Pumpin or Flowing	Initial Shut-In Pressure	Choke Size	Flow Tubing Pressure
There are no Initial Data records to display.										

Completion and Test Data by Producing Formation			
Formation Name: DEESE		Code: 404DEESS	Class: TA
<b>Spacing Orders</b>		<b>Perforated Intervals</b>	
<b>Order No</b>	<b>Unit Size</b>	<b>From</b>	<b>To</b>
There are no Spacing Order records to display.		3791	3994
<b>Acid Volumes</b>		<b>Fracture Treatments</b>	
There are no Acid Volume records to display.		There are no Fracture Treatments records to display.	

Formation	Top
DEESE	3791
DEESE	3972

Were open hole logs run? No  
Date last log run:  
  
Were unusual drilling circumstances encountered? No  
Explanation:

Other Remarks
There are no Other Remarks.

FOR COMMISSION USE ONLY	
Status: Accepted	1139614

# RECEIVED

Form 1002A  
Rev. 2009

APR 23 2018

OKLAHOMA CORPORATION COMMISSION

API NO. **137-02294**  
OTC PROD. UNIT NO. **137-165030**

PLEASE TYPE OR USE BLACK INK ONLY  
NOTE:  
Attach copy of original 1002A if recompletion or reentry.

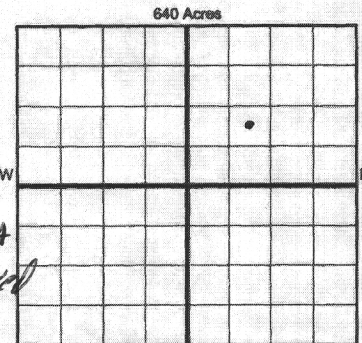
OKLAHOMA CORPORATION COMMISSION  
Oil & Gas Conservation Division  
Post Office Box 52000  
Oklahoma City, Oklahoma 73152-2000  
Rule 165-10-3-25

☒ ORIGINAL  
☒ AMENDED (Reason) **J.A.**

## COMPLETION REPORT

TYPE OF DRILLING OPERATION  
☒ STRAIGHT HOLE ☐ DIRECTIONAL HOLE ☐ HORIZONTAL HOLE  
☐ SERVICE WELL  
If directional or horizontal, see reverse for bottom hole location.

SPUD DATE **9/4/49**  
DRLG FINISHED DATE **9/21/49**  
DATE OF WELL COMPLETION **9/26/49**  
1st PROD DATE **9/28/49**  
RECOMP DATE **4-23-2018**  
Longitude (if known)



COUNTY **Stephens** SEC **3** TWP **15** RGE **4W**  
LEASE NAME **Humphrey** WELL NO. **4-A**  
FSL OF 1/4 SEC **960** FWL OF 1/4 SEC **960**  
ELEVATION **1011** Ground **1003** Latitude (if known)  
Derrick FL **1011**  
OPERATOR NAME **SAJAC Energy Co., LLC** OTC/OCC OPERATOR NO. **19649194**  
ADDRESS **Box 207**  
CITY **Duncan** STATE **OK** ZIP **73534**

## COMPLETION TYPE

☒ SINGLE ZONE  
☐ MULTIPLE ZONE  
Application Date  
☐ COMMINGLED  
Application Date  
LOCATION  
EXCEPTION ORDER  
INCREASED DENSITY  
ORDER NO.

## CASING & CEMENT (Form 1002C must be attached)

TYPE	SIZE	WEIGHT	GRADE	FEET	PSI	SAX	TOP OF CMT
CONDUCTOR							
SURFACE	<b>10 3/4</b>	<b>33.75</b>	<b>J-L</b>	<b>359'</b>		<b>300</b>	<b>surface</b>
INTERMEDIATE							
PRODUCTION	<b>5 1/2</b>	<b>14</b>	<b>J-L</b>	<b>3972</b>		<b>175</b>	
LINER							

PACKER @ BRAND & TYPE PLUG @ TYPE PLUG @ TYPE  
PACKER @ BRAND & TYPE PLUG @ TYPE PLUG @ TYPE

TOTAL DEPTH **3999**

## COMPLETION & TEST DATA BY PRODUCING FORMATION

FORMATION	<b>Deese</b>						
SPACING & SPACING ORDER NUMBER							
CLASS: Oil, Gas, Dry, Inj. Disp, Comm Disp, Svc	<b>Oil TA</b>						
PERFORATED INTERVALS	<b>3991-3810</b> <b>3972-3994</b>						
ACID/VOLUME							
FRACTURE TREATMENT (Fluids/Prop Amounts)							

Min Gas Allowable (165-10-17-7) OR Oil Allowable (165-10-13-3) Gas Purchaser/Measurer First Sales Date

## INITIAL TEST DATA

INITIAL TEST DATE	<b>9/28/49</b>						
OIL-BBL/DAY	<b>354</b>						
OIL-GRAVITY (API)	<b>39.5</b>						
GAS-MCF/DAY							
GAS-OIL RATIO CU FT/BBL							
WATER-BBL/DAY	<b>0</b>						
PUMPING OR FLOWING	<b>Flowing</b>						
INITIAL SHUT-IN PRESSURE							
CHOKE SIZE	<b>1"</b>						
FLOW TUBING PRESSURE							

**AS SUBMITTED**

A record of the formations drilled through, and pertinent remarks are presented on the reverse. I declare that I have knowledge of the contents of this report and am authorized by my organization to make this report, which was prepared by me or under my supervision and direction, with the data and facts stated herein to be true, correct, and complete to the best of my knowledge and belief.

SIGNATURE **Mike Foailla** NAME (PRINT OR TYPE) **Mike Foailla** DATE **4-20-18** PHONE NUMBER **580-4674349**  
ADDRESS **Box #207** CITY **Duncan** STATE **OK** ZIP **73534** EMAIL ADDRESS

PLEASE TYPE OR USE BLACK INK ONLY  
FORMATION RECORD

Give formation names and tops, if available, or descriptions and thickness of formations drilled through. Show intervals cored or drillstem tested.

NAMES OF FORMATIONS	TOP
Deese	3791- 3816
Deese	3972- 3994

LEASE NAME Humphrey

WELL NO. 4-A

FOR COMMISSION USE ONLY	
ITD on file <input type="checkbox"/> YES <input type="checkbox"/> NO	
APPROVED _____	DISAPPROVED _____
2) Reject Codes	
_____	
_____	
_____	
_____	

Were open hole logs run?	_____ yes _____ no
Date Last log was run	_____
Was CO <sub>2</sub> encountered?	_____ yes _____ no at what depths? _____
Was H <sub>2</sub> S encountered?	_____ yes _____ no at what depths? _____
Were unusual drilling circumstances encountered?	_____ yes _____ no
If yes, briefly explain below	

Other remarks:


640 Acres


If more than three drainholes are proposed, attach a separate sheet indicating the necessary information.

Direction must be stated in degrees azimuth. Please note, the horizontal drainhole and its end point must be located within the boundaries of the lease or spacing unit.

Directional surveys are required for all drainholes and directional wells.

640 Acres


BOTTOM HOLE LOCATION FOR DIRECTIONAL HOLE

SEC	TWP	RGE	COUNTY		
Spot Location				Feet From 1/4 Sec Lines	FSL
1/4	1/4	1/4	1/4		FWL
Measured Total Depth		True Vertical Depth	BHL From Lease, Unit, or Property Line:		

BOTTOM HOLE LOCATION FOR HORIZONTAL HOLE: (LATERALS)

SEC	TWP	RGE	COUNTY		
Spot Location				Feet From 1/4 Sec Lines	FSL
1/4	1/4	1/4	1/4		FWL
Depth of Deviation		Radius of Turn	Direction	Total Length	
Measured Total Depth		True Vertical Depth	BHL From Lease, Unit, or Property Line:		

LATERAL #2

SEC	TWP	RGE	COUNTY		
Spot Location				Feet From 1/4 Sec Lines	FSL
1/4	1/4	1/4	1/4		FWL
Depth of Deviation		Radius of Turn	Direction	Total Length	
Measured Total Depth		True Vertical Depth	BHL From Lease, Unit, or Property Line:		

LATERAL #3

SEC	TWP	RGE	COUNTY		
Spot Location				Feet From 1/4 Sec Lines	FSL
1/4	1/4	1/4	1/4		FWL
Depth of Deviation		Radius of Turn	Direction	Total Length	
Measured Total Depth		True Vertical Depth	BHL From Lease, Unit, or Property Line:		