

Oklahoma Corporation Commission
Oil & Gas Conservation Division
Post Office Box 52000
Oklahoma City, Oklahoma 73152-2000
Rule 165: 10-3-25

Form 1002A

API No.: 35063247010001

Completion Report

Spud Date: September 13, 2017

OTC Prod. Unit No.: 063-222909

Drilling Finished Date: October 31, 2017

1st Prod Date: January 21, 2018

Completion Date: January 13, 2018

Drill Type: HORIZONTAL HOLE

Min Gas Allowable: Yes

Well Name: JEFFERSON 1-20-17WH

Purchaser/Measurer: BP ENERGY

Location: HUGHES 20 9N 12E
SW SW SW SW
255 FSL 300 FWL of 1/4 SEC
Latitude: 35.23552 Longitude: -96.068505
Derrick Elevation: 0 Ground Elevation: 774

First Sales Date: 01/17/2018

Operator: CALYX ENERGY III LLC 23515

6120 S YALE AVE STE 1480
TULSA, OK 74136-4226

| Completion Type | |
|-----------------|---------------|
| X | Single Zone |
| | Multiple Zone |
| | Commingled |

| Location Exception |
|--------------------|
| Order No |
| 665621 |

| Increased Density |
|--|
| Order No |
| There are no Increased Density records to display. |

| Casing and Cement | | | | | | | |
|-------------------|--------|--------|---------|-------|-----|------|------------|
| Type | Size | Weight | Grade | Feet | PSI | SAX | Top of CMT |
| CONDUCTOR | 20 | | | 29 | | 9 | SURFACE |
| SURFACE | 13 3/8 | 54.5 | H-40 | 493 | | 325 | SURFACE |
| PRODUCTION | 5 1/2 | 17 | P-110HC | 14059 | | 1705 | 6024 |

| Liner | | | | | | | | |
|--|------|--------|-------|--------|-----|-----|-----------|--------------|
| Type | Size | Weight | Grade | Length | PSI | SAX | Top Depth | Bottom Depth |
| There are no Liner records to display. | | | | | | | | |

Total Depth: 14105

| Packer | |
|---|--------------|
| Depth | Brand & Type |
| There are no Packer records to display. | |

| Plug | |
|---------------------------------------|-----------|
| Depth | Plug Type |
| There are no Plug records to display. | |

| Initial Test Data |
|-------------------|
|-------------------|

| Test Date | Formation | Oil BBL/Day | Oil-Gravity (API) | Gas MCF/Day | Gas-Oil Ratio Cu FT/BBL | Water BBL/Day | Pumpin or Flowing | Initial Shut-In Pressure | Choke Size | Flow Tubing Pressure |
|--------------|-----------|-------------|-------------------|-------------|-------------------------|---------------|-------------------|--------------------------|------------|----------------------|
| Jan 25, 2018 | WOODFORD | | | 1432 | | 4047 | FLOWING | 170 | 187 | 127 |

Completion and Test Data by Producing Formation

Formation Name: WOODFORD

Code: 319WDFD

Class: GAS

Spacing Orders

| Order No | Unit Size |
|----------|-----------|
| 661353 | 640 |
| 665620 | MULTIUNIT |

Perforated Intervals

| From | To |
|------|-------|
| 4573 | 13929 |

Acid Volumes

2,243 BARRELS 15% HCL

Fracture Treatments

309,908 BARRELS FLUID, 8,201,816 POUNDS SAND

| Formation | Top |
|----------------|------|
| WAPANUCKA | 3246 |
| UNION VALLEY | 3407 |
| MAYES | 4126 |
| WOODFORD SHALE | 4460 |

Were open hole logs run? No

Date last log run: December 01, 2017

Were unusual drilling circumstances encountered? No

Explanation:

Other Remarks

NOTE: SURFACE HOLE WAS MOVED BUT THE CORRECT LOCATION IS SHOWN ON THIS 1002A FORM. OCC - THIS DOCUMENT IS ACCEPTED BASED ON THE DATA SUBMITTED NEITHER THE FINAL LOCATION EXCEPTION NOR THE FINAL MULTIUNIT ORDERS HAVE BEEN ISSUED.

Lateral Holes

Sec: 17 TWP: 9N RGE: 12E County: HUGHES

SW NE NW NW

504 FNL 716 FWL of 1/4 SEC

Depth of Deviation: 3634 Radius of Turn: 656 Direction: 357 Total Length: 9356

Measured Total Depth: 14105 True Vertical Depth: 4045 End Pt. Location From Release, Unit or Property Line: 504

FOR COMMISSION USE ONLY

1139481

Status: Accepted

API NO. 3506324701
OTC PROD. UNIT NO. 063-222909

(PLEASE TYPE OR USE BLACK INK ONLY)

OKLAHOMA CORPORATION COMMISSION

Oil & Gas Conservation Division

Post Office Box 52000

Okla. Stat. Title 73, Sec. 2-202
Rule 603, O.S.

COMPLETION REPORT

NOTE:

Attach a copy of original 1002A if this is a recompletion or reentry.

Form 1002A

Rev. 2009

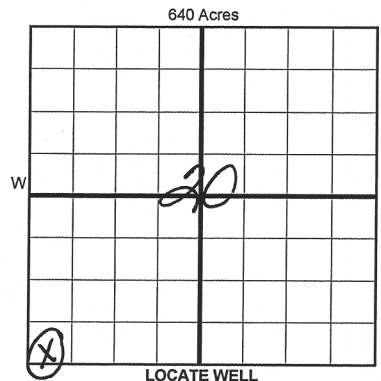
☒ ORIGINAL
☐ AMENDED (Reason)

TYPE OF DRILLING OPERATION

☐ STRAIGHT HOLE ☐ DIRECTIONAL HOLE ☒ HORIZONTAL HOLE
☐ SERVICE WELL

If directional or horizontal, see reverse for bottom hole location.

| | | | | | | | | | |
|----------------------|-----------------------------|-----|---------------------|-----------|-------------------------|---------|-------|----------------------|----------|
| COUNTY | HUGHES | SEC | 20 | TWP | 9N | RGE | 12E | SPUD DATE | 9/13/17 |
| LEASE NAME | JEFFERSON | | | | | | | DRLG FINISHED DATE | 10/31/17 |
| SW 1/4 SW 1/4 SW 1/4 | FSL OF 1/4 SEC | 255 | FWL OF 1/4 SEC | 300 | DATE OF WELL COMPLETION | 1/13/18 | | | |
| ELEVATION Derrick FL | Ground | 774 | Latitude (if known) | 35.235520 | RECOMP DATE | 1/21/18 | | | |
| OPERATOR NAME | CALYX ENERGY III, LLC | | | | | | | OTC/OCC OPERATOR NO. | 23515 |
| ADDRESS | 6120 SOUTH YALE, SUITE 1480 | | | | | | | | |
| CITY | TULSA | | | STATE | OK | ZIP | 74136 | | |



COMPLETION TYPE

| |
|---|
| <input checked="" type="checkbox"/> SINGLE ZONE |
| <input type="checkbox"/> MULTIPLE ZONE |
| Application Date |
| <input type="checkbox"/> COMMINGLED |
| Application Date |
| LOCATION EXCEPTION ORDER NO. |
| INCREASED DENSITY ORDER NO. |

CASING & CEMENT (Form 1002C must be attached)

| TYPE | SIZE | WEIGHT | GRADE | FEET | PSI | SAX | TOP OF CMT |
|--------------|--------|--------|--------|-------|-----|-------------|------------|
| CONDUCTOR | 20 | | | 29 | | 9 | SURFACE |
| SURFACE | 13-3/8 | 54.5# | H40 | 493 | | 325 | SURFACE |
| INTERMEDIATE | | | | | | | |
| PRODUCTION | 5-1/2 | 17# | P110HC | 14059 | | 1705 | 6024 |
| LINER | | | | | | | |
| | | | | | | TOTAL DEPTH | 14,105 |

PACKER @ _____ BRAND & TYPE _____ PLUG @ _____ TYPE _____ PLUG @ _____ TYPE _____
PACKER @ _____ BRAND & TYPE _____ PLUG @ _____ TYPE _____ PLUG @ _____ TYPE _____

COMPLETION & TEST DATA BY PRODUCING FORMATION

| | |
|---|--|
| FORMATION | WOODFORD |
| SPACING & SPACING ORDER NUMBER | I.O. 665620 (MULTIUNIT) 661353 (640) |
| CLASS: Oil, Gas, Dry, Inj, Disp, Comm Disp, Svc | GAS |
| PERFORATED INTERVALS | 4573-13929 |
| ACID/VOLUME | 2243 Bbls 15% HCl |
| FRACTURE TREATMENT (Fluids/Prop Amounts) | 309,908 Bbls Fluid 8,201,816 # Sand |



Min Gas Allowable (165:10-17-7)
OR
Oil Allowable (165:10-13-3)

Gas Purchaser/Measurer
First Sales Date

BP Energy
1/17/2018

INITIAL TEST DATA

| | |
|--------------------------|-----------|
| INITIAL TEST DATE | 1/25/2018 |
| OIL-BBL/DAY | |
| OIL-GRAVITY (API) | |
| GAS-MCF/DAY | 1432 |
| GAS-OIL RATIO CU FT/BBL | |
| WATER-BBL/DAY | 4047 |
| PUMPING OR FLOWING | Flowing |
| INITIAL SHUT-IN PRESSURE | 170 |
| CHOKE SIZE | 187 |
| FLOW TUBING PRESSURE | 127 |

AS SUBMITTED

A record of the formations drilled through, and pertinent remarks are presented on the reverse. I declare that I have knowledge of the contents of this report and am authorized by my organization to make this report, which was prepared by me or under my supervision and direction, with the data and facts stated herein to be true, correct, and complete to the best of my knowledge and belief.

Teresa Wade, Geo-Tech

4/12/2018 918-949-4224

SIGNATURE

NAME (PRINT OR TYPE)

DATE

PHONE NUMBER

6120 S. Yale, #1480

Tulsa

OK

74136

twade@calyxenergy.com

ADDRESS

CITY

STATE

ZIP

EMAIL ADDRESS

PLEASE TYPE OR USE BLACK INK ONLY
FORMATION RECORD

Give formation names and tops, if available, or descriptions and thickness of formations drilled through. Show intervals cored or drillstem tested.

LEASE NAME JEFFERSON WELL NO. 1-20-17WH

| NAMES OF FORMATIONS | TOP |
|---------------------|-------|
| Wapanucka Ls | 3246' |
| Union Valley Ls | 3407' |
| Mayes Ls | 4126' |
| Woodford Sh | 4460' |

FOR COMMISSION USE ONLY

ITD on file ☐ YES ☐ NO

APPROVED _____ DISAPPROVED _____

2) Reject Codes _____

Were open hole logs run? ____ yes X no

Date Last log was run 12/1/2017

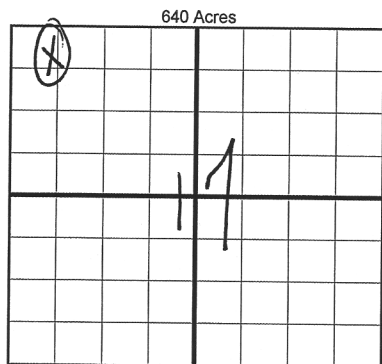
Was CO₂ encountered? ____ yes X no at what depths? _____

Was H₂S encountered? ____ yes X no at what depths? _____

Were unusual drilling circumstances encountered? ____ yes X no
If yes, briefly explain below

Other remarks:

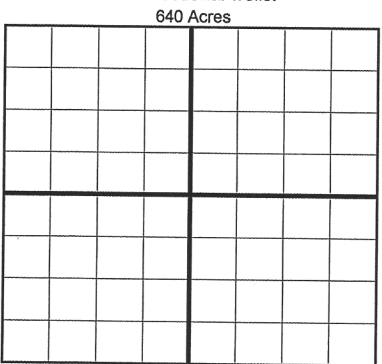
NOTE: Surface hole was moved but the correct location is shown on this 1002A form. A new case will be reopened with the OCC to correct this error.



If more than three drainholes are proposed, attach a separate sheet indicating the necessary information.

Direction must be stated in degrees azimuth.
Please note, the horizontal drainhole and its end point must be located within the boundaries of the lease or spacing unit.

Directional surveys are required for all drainholes and directional wells.



BOTTOM HOLE LOCATION FOR DIRECTIONAL HOLE

| | | | |
|----------------------|-----|---------------------|---|
| SEC | TWP | RGE | COUNTY |
| Spot Location | | | |
| 1/4 | 1/4 | 1/4 | 1/4 |
| Measured Total Depth | | True Vertical Depth | BHL From Lease, Unit, or Property Line: |

BOTTOM HOLE LOCATION FOR HORIZONTAL HOLE: (LATERALS)

LATERAL #1

| | | | |
|----------------------|--------|---|--------------|
| SEC | TWP | RGE | COUNTY |
| 17 | 9N | 12E | HUGHES |
| Spot Location | | | |
| SE 1/4 | NE 1/4 | NW 1/4 | NW 1/4 |
| Depth of Deviation | | Radius of Turn | Direction |
| 3,634 | | 656 | 357° N |
| Measured Total Depth | | True Vertical Depth | Total Length |
| 14,105 | | 4,045 | 9,356 |
| | | BHL From Lease, Unit, or Property Line: | |
| | | 504 | |

LATERAL #2

| | | | |
|----------------------|-----|---|--------------|
| SEC | TWP | RGE | COUNTY |
| Spot Location | | | |
| 1/4 | 1/4 | 1/4 | 1/4 |
| Depth of Deviation | | Radius of Turn | Direction |
| Measured Total Depth | | True Vertical Depth | Total Length |
| | | BHL From Lease, Unit, or Property Line: | |

LATERAL #3

| | | | |
|----------------------|-----|---|--------------|
| SEC | TWP | RGE | COUNTY |
| Spot Location | | | |
| 1/4 | 1/4 | 1/4 | 1/4 |
| Depth of Deviation | | Radius of Turn | Direction |
| Measured Total Depth | | True Vertical Depth | Total Length |
| | | BHL From Lease, Unit, or Property Line: | |

API NO. 3506324701
OTC PROD. UNIT NO. 063-222909

(PLEASE TYPE OR USE BLACK INK ONLY)

☒ ORIGINAL
☐ AMENDED (Reason)

TYPE OF DRILLING OPERATION

☐ STRAIGHT HOLE ☐ DIRECTIONAL HOLE ☒ HORIZONTAL HOLE
☐ SERVICE WELL

If directional or horizontal, see reverse for bottom hole location.

COUNTY HUGHES SEC 20 TWP 9N RGE 12E
LEASE NAME JEFFERSON
SW 1/4 SW 1/4 SW 1/4 FSL OF 255
Derrick FL Ground 774 Latitude (if known) 35.235520 Longitude (if known) -96.0685050
OPERATOR NAME CALYX ENERGY III, LLC OTC/OCC OPERATOR NO. 23515
ADDRESS 6120 SOUTH YALE, SUITE 1480
CITY TULSA STATE OK ZIP 74136

SPUD DATE 9/13/17
DRLG FINISHED DATE 10/31/17
DATE OF WELL COMPLETION 1/13/18
WELL NO. 1-20-17WH
PROD DATE 1/21/18
RECOMP DATE
WELL NAME 1-20-17WH

640 Acres
LOCATE WELL

COMPLETION TYPE

☒ SINGLE ZONE
☐ MULTIPLE ZONE
Application Date
COMINGLED
Application Date
LOCATION EXCEPTION ORDER NO. 665621 I.O.
INCREASED DENSITY ORDER NO.

CASING & CEMENT (Form 1002C must be attached)

| TYPE | SIZE | WEIGHT | GRADE | FEET | PSI | SAX | TOP OF CMT |
|--------------|--------|--------|--------|-------|-----|------|------------|
| CONDUCTOR | 20 | | | 29 | | 9 | SURFACE |
| SURFACE | 13-3/8 | 54.5# | H40 | 493 | | 325 | SURFACE |
| INTERMEDIATE | | | | | | | |
| PRODUCTION | 5-1/2 | 17# | R110HC | 14059 | | 1705 | 6024 |
| LINER | | | | | | | |
| TOTAL DEPTH | | | | | | | 14,105 |

PACKER @ BRAND & TYPE PLUG @ TYPE PLUG @ TYPE
PACKER @ BRAND & TYPE PLUG @ TYPE PLUG @ TYPE

COMPLETION & TEST DATA BY PRODUCING FORMATION

| | | | | | | | |
|---|--------------------------------------|--|--|--|--|--|------------------------|
| FORMATION | WOODFORD | | | | | | |
| SPACING & SPACING ORDER NUMBER | I.O. 665620 (Multiunit) 661353(640)H | | | | | | Reported to Frac Focus |
| CLASS: Oil, Gas, Dry, Inj, Disp, Comm Disp, Svc | GAS | | | | | | |
| PERFORATED INTERVALS | 4573-13929 | | | | | | |
| ACID/VOLUME | 2243 Bbls 15% HCl | | | | | | |
| FRACTURE TREATMENT (Fluids/Prop Amounts) | 309,908 Bbls Fluid | | | | | | |
| | 8,201,816 # Sand | | | | | | |

☒ Min Gas Allowable (165:10-17-7) OR ☐ Gas Purchaser/Measurer First Sales Date BP Energy 1/17/2018
☐ Oil Allowable (165:10-13-3)

INITIAL TEST DATA

| | | | | | | | |
|--------------------------|-----------|--|--|--|--|--|--|
| INITIAL TEST DATE | 1/25/2018 | | | | | | |
| OIL-BBL/DAY | | | | | | | |
| OIL-GRAVITY (API) | | | | | | | |
| GAS-MCF/DAY | 1432 | | | | | | |
| GAS-OIL RATIO CU FT/BBL | | | | | | | |
| WATER-BBL/DAY | 4047 | | | | | | |
| PUMPING OR FLOWING | Flowing | | | | | | |
| INITIAL SHUT-IN PRESSURE | 170 | | | | | | |
| CHOKE SIZE | 187 | | | | | | |
| FLOW TUBING PRESSURE | 127 | | | | | | |

AS SUBMITTED

A record of the formations drilled through, and pertinent remarks are presented on the reverse. I declare that I have knowledge of the contents of this report and am authorized by my organization to make this report, which was prepared by me or under my supervision and direction, with the data and facts stated herein to be true, correct, and complete to the best of my knowledge and belief.

SIGNATURE Teresa Wade, Geo-Tech
6120 S. Yale, #1480
ADDRESS TULSA CITY STATE OK ZIP 74136
DATE 4/12/2018
PHONE NUMBER 918-949-4224
EMAIL ADDRESS twade@calyxenergy.com

SCANNED