

Oklahoma Corporation Commission
Oil & Gas Conservation Division
Post Office Box 52000
Oklahoma City, Oklahoma 73152-2000
Rule 165: 10-3-25

Form 1002A

API No.: 35063247030001

Completion Report

Spud Date: September 12, 2017

OTC Prod. Unit No.: 063-222908

Drilling Finished Date: November 23, 2017

1st Prod Date: January 25, 2018

Completion Date: January 13, 2018

Drill Type: HORIZONTAL HOLE

Min Gas Allowable: Yes

Well Name: JEFFERSON 1-29-32WH

Purchaser/Measurer: BP ENERGY

Location: HUGHES 20 9N 12E
S2 SW SW SW
255 FSL 330 FWL of 1/4 SEC
Latitude: 35.23255 Longitude: -96.068505
Derrick Elevation: 0 Ground Elevation: 774

First Sales Date: 01/16/2018

Operator: CALYX ENERGY III LLC 23515

6120 S YALE AVE STE 1480
TULSA, OK 74136-4226

Completion Type	
X	Single Zone
	Multiple Zone
	Commingled

Location Exception
Order No
667165

Increased Density
Order No
There are no Increased Density records to display.

Casing and Cement							
Type	Size	Weight	Grade	Feet	PSI	SAX	Top of CMT
CONDUCTOR	20			29		9	SURFACE
SURFACE	13 3/8	54.5	H-40	486		325	SURFACE
PRODUCTION	5 1/2	17	P-110HC	12091		1545	3516

Liner								
Type	Size	Weight	Grade	Length	PSI	SAX	Top Depth	Bottom Depth
There are no Liner records to display.								

Total Depth: 12229

Packer	
Depth	Brand & Type
There are no Packer records to display.	

Plug	
Depth	Plug Type
There are no Plug records to display.	

Initial Test Data

Test Date	Formation	Oil BBL/Day	Oil-Gravity (API)	Gas MCF/Day	Gas-Oil Ratio Cu FT/BBL	Water BBL/Day	Pumpin or Flowing	Initial Shut-In Pressure	Choke Size	Flow Tubing Pressure
Jan 27, 2018	WOODFORD	2	45	1118	139000	4210	FLOWING	250	110	122

Completion and Test Data by Producing Formation

Formation Name: WOODFORD

Code: 319WDFD

Class: GAS

Spacing Orders

Order No	Unit Size
661353	640
666244	640
667091	MULTIUNIT

Perforated Intervals

From	To
4676	12025

Acid Volumes

2,321 BARRELS 15% HCL

Fracture Treatments

255,999 BARRELS FLUID, 8,242,376 POUNDS SAND
--

Formation	Top
WAPANUCKA LS	3198
UNION VALLEY LS	3370
MAYES LS	4170
WOODFORD SHALE	4360

Were open hole logs run? No

Date last log run: December 01, 2017

Were unusual drilling circumstances encountered? No

Explanation:

Other Remarks

OCC - THIS DOCUMENT IS ACCEPTED BASED ON THE DATA SUBMITTED NEITHER THE FINAL LOCATION EXCEPTION NOR THE FINAL MULTIUNIT ORDERS HAVE NOT BEEN ISSUED.

Lateral Holes

Sec: 32 TWP: 9N RGE: 12E County: HUGHES

SE SW SW NW

2500 FNL 456 FWL of 1/4 SEC

Depth of Deviation: 3795 Radius of Turn: 488 Direction: 172 Total Length: 7349

Measured Total Depth: 12229 True Vertical Depth: 4344 End Pt. Location From Release, Unit or Property Line: 456

FOR COMMISSION USE ONLY

1139479

Status: Accepted

API NO. 3506324703
OTC PROD. UNIT NO. 063-222908

(PLEASE TYPE OR USE BLACK INK ONLY)

☒ ORIGINAL
☐ AMENDED (Reason)

APR 16 2018
OKLAHOMA CORPORATION COMMISSION
Oil & Gas Conservation Division
Post Office Box 52000
Oklahoma City, Oklahoma 73152-2000
Rule 165:10-3-25

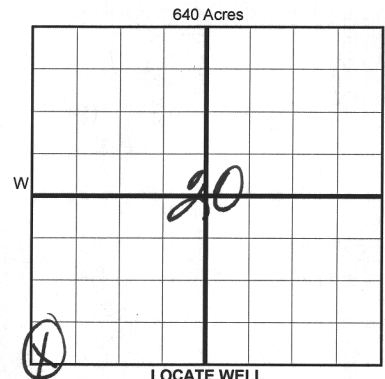
NOTE:
Attach a copy of original
1002A if this is a
recompletion or reentry.

Form 1002A
Rev. 2009

COMPLETION REPORT

TYPE OF DRILLING OPERATION
☐ STRAIGHT HOLE ☐ DIRECTIONAL HOLE ☒ HORIZONTAL HOLE
If directional or horizontal, see reverse for bottom hole location.

COUNTY	HUGHES	SEC	20	TWP	9N	RGE	12E	
LEASE NAME	JEFFERSON			WELL NO.	1-29-32441			
SW 1/4 SW 1/4 SW 1/4 SW 1/4	FSL OF 1/4 SEC	255	FWL OF 1/4 SEC	315 330			PROD DATE	1/25/18
ELEVATION	Ground	774	Latitude (if known)	35.2325500			Longitude (if known)	-96.0685050
OPERATOR NAME	CALYX ENERGY III, LLC			OTC/OCC OPERATOR NO.	23515			
ADDRESS	6120 SOUTH YALE, SUITE 1480							
CITY	TULSA	STATE	OK	ZIP	74136			



COMPLETION TYPE

☒ SINGLE ZONE
☐ MULTIPLE ZONE
Application Date
COMINGLED
Application Date
LOCATION EXCEPTION
ORDER NO. 667165 I.O.
INCREASED DENSITY
ORDER NO.

CASING & CEMENT (Form 1002C must be attached)

TYPE	SIZE	WEIGHT	GRADE	FEET	PSI	SAX	TOP OF CMT
CONDUCTOR	20			29		9	SURFACE
SURFACE	13-3/8	54.5#	H40	486		325	SURFACE
INTERMEDIATE							
PRODUCTION	5-1/2	17#	P-110HC	12091		1545	3516
LINER							

PACKER @ _____ BRAND & TYPE _____ PLUG @ _____ TYPE _____ PLUG @ _____ TYPE _____
PACKER @ _____ BRAND & TYPE _____ PLUG @ _____ TYPE _____ PLUG @ _____ TYPE _____

TOTAL DEPTH 12,229

COMPLETION & TEST DATA BY PRODUCING FORMATION

FORMATION 3P WOODFORD
SPACING & SPACING ORDER NUMBER 667091/661359/666244 (640)
CLASS: Oil, Gas, Dry, Inj, Disp, Comm Disp, Svc
PERFORATED INTERVALS 4676-12025
ACID/VOLUME 2321 Bbls 15% HCl
FRACTURE TREATMENT (Fluids/Prop Amounts) 255,999 Bbls Fluid
8,242,376 # Sd

☒ Min Gas Allowable (165:10-17-7)
OR
☐ Oil Allowable (165:10-13-3)

Gas Purchaser/Measurer BP Energy
First Sales Date 1/16/2018

INITIAL TEST DATA

INITIAL TEST DATE	1/27/2018
OIL-BBL/DAY	2
OIL-GRAVITY (API)	45
GAS-MCF/DAY	1118
GAS-OIL RATIO CU FT/BBL	139000
WATER-BBL/DAY	4210
PUMPING OR FLOWING	Flowing
INITIAL SHUT-IN PRESSURE	250
CHOKE SIZE	110
FLOW TUBING PRESSURE	122

AS SUBMITTED

A record of the formations drilled through, and pertinent remarks are presented on the reverse. I declare that I have knowledge of the contents of this report and am authorized by my organization to make this report, which was prepared by me or under my supervision and direction, with the data and facts stated herein to be true, correct, and complete to the best of my knowledge and belief.

Teresa Wade, Geo-Tech
6120 S. Yale, #1480
Tulsa OK 74136
twade@calyxenergy.com

PLEASE TYPE OR USE BLACK INK ONLY

FORMATION RECORD

Give formation names and tops, if available, or descriptions and thickness of formations drilled through. Show intervals cored or drillstem tested.

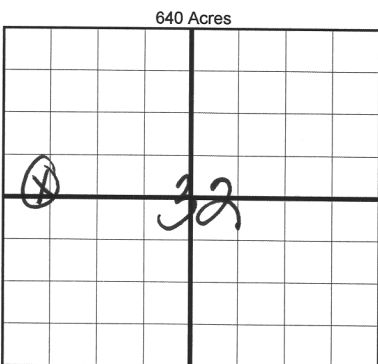
NAMES OF FORMATIONS	TOP
Wapanucka Ls	3198'
Union Valley Ls	3370'
Mayes Ls	4170'
Woodford Sh	4360'

LEASE NAME JEFFERSON WELL NO. 1-29-32WH

FOR COMMISSION USE ONLY	
ITD on file <input type="checkbox"/> YES <input type="checkbox"/> NO	
APPROVED _____	DISAPPROVED _____
2) Reject Codes	

Were open hole logs run?	yes	<input checked="" type="checkbox"/> no
Date Last log was run	<u>12/1/2017</u>	
Was CO ₂ encountered?	yes	<input checked="" type="checkbox"/> no at what depths? _____
Was H ₂ S encountered?	yes	<input checked="" type="checkbox"/> no at what depths? _____
Were unusual drilling circumstances encountered?	yes	<input checked="" type="checkbox"/> no
If yes, briefly explain below		

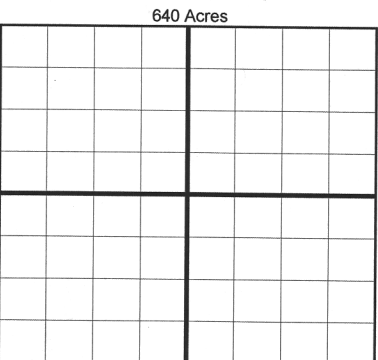
Other remarks:



If more than three drainholes are proposed, attach a separate sheet indicating the necessary information.

Direction must be stated in degrees azimuth. Please note, the horizontal drainhole and its end point must be located within the boundaries of the lease or spacing unit.

Directional surveys are required for all drainholes and directional wells.



BOTTOM HOLE LOCATION FOR DIRECTIONAL HOLE

SEC	TWP	RGE	COUNTY
Spot Location	1/4	1/4	1/4
Measured Total Depth	True Vertical Depth		BHL From Lease, Unit, or Property Line:

BOTTOM HOLE LOCATION FOR HORIZONTAL HOLE: (LATERALS)

LATERAL #1			
SEC	TWP	RGE	COUNTY
32	9N	12E	HUGHES
Spot Location	SE 1/4	SW 1/4	NW 1/4
Depth of Deviation	3,795	Radius of Turn	488
Measured Total Depth	12,229	True Vertical Depth	4,344
Feet From 1/4 Sec Lines		FNL	2500
Direction		172 S	Total Length 7349'
BHL From Lease, Unit, or Property Line:		441	456

LATERAL #2			
SEC	TWP	RGE	COUNTY
Spot Location	1/4	1/4	1/4
Depth of Deviation	Radius of Turn		Direction
Measured Total Depth	True Vertical Depth		BHL From Lease, Unit, or Property Line:
Feet From 1/4 Sec Lines		FSL	FWL
Total Length			

LATERAL #3			
SEC	TWP	RGE	COUNTY
Spot Location	1/4	1/4	1/4
Depth of Deviation	Radius of Turn		Direction
Measured Total Depth	True Vertical Depth		BHL From Lease, Unit, or Property Line:
Feet From 1/4 Sec Lines		FSL	FWL
Total Length			

API NO. 8506324703
OTC PROD. 063-222908
UNIT NO.

(PLEASE TYPE OR USE BLACK INK ONLY)

☒ ORIGINAL
☐ AMENDED (Reason)

TYPE OF DRILLING OPERATION

☐ STRAIGHT HOLE ☐ DIRECTIONAL HOLE ☒ HORIZONTAL HOLE
☐ SERVICE WELL

If directional or horizontal, see reverse for bottom hole location.

COUNTY	HUGHES	SEC	20	TWP	9N	RGE	12E	
LEASE NAME	JEFFERSON			WELL NO.	1-29-32H11			
SW 1/4 SW 1/4 SW 1/4 SW 1/4	FSL OF 1/4 SEC	255	FWL OF 1/4 SEC	315			PROD DATE	1/25/18
ELEVATION Derrick FL	Ground	774	Latitude (if known)	35.2325500			Longitude (if known)	-96.0685050
OPERATOR NAME	CALYX ENERGY III, LLC			OTC/OCC OPERATOR NO.	23515			
ADDRESS	6120 SOUTH YALE, SUITE 1480							
CITY	TULSA		STATE	OK		ZIP	74136	

COMPLETION TYPE

<input checked="" type="checkbox"/> SINGLE ZONE
<input type="checkbox"/> MULTIPLE ZONE
Application Date
COMMINGLED
Application Date
LOCATION EXCEPTION ORDER NO.
INCREASED DENSITY ORDER NO.

CASING & CEMENT (Form 1002C must be attached)

TYPE	SIZE	WEIGHT	GRADE	FEET	PSI	SAX	TOP OF CMT
CONDUCTOR	20			29		9	SURFACE
SURFACE	13-3/8	54.5#	H40	486		325	SURFACE
INTERMEDIATE							
PRODUCTION	5-1/2	17#	P.110HC	12091		1545	3516
LINER							
						TOTAL DEPTH	12,229

PACKER @ _____ BRAND & TYPE _____ PLUG @ _____ TYPE _____ PLUG @ _____ TYPE _____
PACKER @ _____ BRAND & TYPE _____ PLUG @ _____ TYPE _____ PLUG @ _____ TYPE _____

COMPLETION & TEST DATA BY PRODUCING FORMATION

FORMATION	SP. WOODFORD
SPACING & SPACING ORDER NUMBER	Multiunit 667091/661353/666244 (640)
CLASS: Oil, Gas, Dry, Inj, Disp, Comm Disp, Svc	GAS
PERFORATED INTERVALS	4676-12025
ACID/VOLUME	2321 Bbls 15% HCl
FRACTURE TREATMENT (Fluids/Prop Amounts)	255,999 Bbls Fluid 8,242,376 # Sd

Min Gas Allowable (165:10-17-7)

☒

OR

Oil Allowable (165:10-13-3)

Gas Purchaser/Measurer

First Sales Date

BP Energy

1/16/2018

INITIAL TEST DATA

INITIAL TEST DATE	1/27/2018
OIL-BBL/DAY	2
OIL-GRAVITY (API)	45
GAS-MCF/DAY	1118
GAS-OIL RATIO CU FT/BBL	139000
WATER-BBL/DAY	4210
PUMPING OR FLOWING	Flowing
INITIAL SHUT-IN PRESSURE	250
CHOKE SIZE	110
FLOW TUBING PRESSURE	122

AS SUBMITTED

A record of the formations drilled through, and pertinent remarks are presented on the reverse. I declare that I have knowledge of the contents of this report and am authorized by my organization to make this report, which was prepared by me or under my supervision and direction, with the data and facts stated herein to be true, correct, and complete to the best of my knowledge and belief.

SIGNATURE	Teresa Wade, Geo-Tech	DATE	4/12/2018	PHONE NUMBER	918-949-4224
ADDRESS	6120 S. Yale, #1480	CITY	Tulsa	STATE	OK
		ZIP	74136	EMAIL ADDRESS	twade@calyxenergy.com

SCANNED