

Oklahoma Corporation Commission
Oil & Gas Conservation Division
Post Office Box 52000
Oklahoma City, Oklahoma 73152-2000
Rule 165: 10-3-25

Form 1002A

API No.: 35063247260001

Completion Report

Spud Date: November 20, 2017

OTC Prod. Unit No.: 063-223315

Drilling Finished Date: December 24, 2017

1st Prod Date: March 17, 2018

Completion Date: March 13, 2018

Drill Type: HORIZONTAL HOLE

Min Gas Allowable: Yes

Well Name: GRANT 1-2-35WH

Purchaser/Measurer: BP ENERGY

Location: HUGHES 2 8N 12E
SW NW SE SW
905 FSL 1518 FWL of 1/4 SEC
Latitude: 35.1910707 Longitude: -96.0130787
Derrick Elevation: 0 Ground Elevation: 856

First Sales Date: 03/17/2018

Operator: CALYX ENERGY III LLC 23515

6120 S YALE AVE STE 1480
TULSA, OK 74136-4226

Completion Type		Location Exception		Increased Density	
X	Single Zone	Order No		Order No	
	Multiple Zone	674516		There are no Increased Density records to display.	
	Commingled				

Casing and Cement							
Type	Size	Weight	Grade	Feet	PSI	SAX	Top of CMT
CONDUCTOR	20			29		9	SURFACE
SURFACE	13 3/8	48		481		325	SURFACE
PRODUCTION	5 1/2	17		13879		1710	4682

Liner								
Type	Size	Weight	Grade	Length	PSI	SAX	Top Depth	Bottom Depth
There are no Liner records to display.								

Total Depth: 13936

Packer		Plug	
Depth	Brand & Type	Depth	Plug Type
There are no Packer records to display.		There are no Plug records to display.	

Initial Test Data

Test Date	Formation	Oil BBL/Day	Oil-Gravity (API)	Gas MCF/Day	Gas-Oil Ratio Cu FT/BBL	Water BBL/Day	Pumpin or Flowing	Initial Shut-In Pressure	Choke Size	Flow Tubing Pressure
Mar 13, 2018	WOODFORD			1228		3791	FLOWING	294	200	110

Completion and Test Data by Producing Formation

Formation Name: WOODFORD

Code: 319WDFD

Class: GAS

Spacing Orders

Order No	Unit Size
528613	640
670063	640
674305	MULTIUNIT

Perforated Intervals

From	To
5448	8341
9621	9650
9864	13725

Acid Volumes

2,247 BARRELS 15% HCL

Fracture Treatments

330,396 BARRELS FLUID, 7,837,682 POUNDS SAND
--

Formation Name: MISSISSIPPIAN

Code: 359MSSP

Class: GAS

Spacing Orders

Order No	Unit Size
669765	640
670063	640
674305	MULTIUNIT

Perforated Intervals

From	To
5413	5448
8341	9621
9650	9864

Acid Volumes

ACIDIZED WITH THE WOODFORD

Fracture Treatments

FRAC'D WITH THE WOODFORD

Formation Name: MISSISSIPPIAN / WOODFORD

Code:

Class: GAS

Formation	Top
WAPANUCKA LS	3706
UNION VALLEY LS	3881
MAYES LS	4813
WOODFORD SHALE	5070

Were open hole logs run? No

Date last log run: January 19, 2018

Were unusual drilling circumstances encountered? No

Explanation:

Other Remarks

PER PREVIOUS EMAIL FROM MICHELLE FARRELL, THE EXISTING LOCATION EXCEPTION AND MULTIUNIT APPLICATION HAS FILED AN EMERGENCY APPLICATION TO AMEND TO INCLUDE MISSISSIPPI AND HUNTON AS ASSOCIATED COMMON SOURCES OF SUPPLY. CD NUMBER 201703811T AND CD NUMBER 201703812T. OCC - THIS DOCUMENT IS ACCEPTED BASED ON THE DATA SUBMITTED NEITHER THE FINAL LOCATION EXCEPTION NOR THE FINAL MULTIUNIT ORDERS HAVE BEEN ISSUED.

Lateral Holes
Sec: 35 TWP: 9N RGE: 12E County: HUGHES
NE NW NW NW
171 FNL 516 FWL of 1/4 SEC
Depth of Deviation: 4334 Radius of Turn: 724 Direction: 358 Total Length: 8312
Measured Total Depth: 13936 True Vertical Depth: 4850 End Pt. Location From Release, Unit or Property Line: 171

FOR COMMISSION USE ONLY
Status: Accepted
1139540

API NO. 3506324726
OTC PROD. UNIT NO. 063-223315

PLEASE TYPE OR USE BLACK INK ONLY

NOTE:

Attach copy of original 1002A if recompletion or reentry.

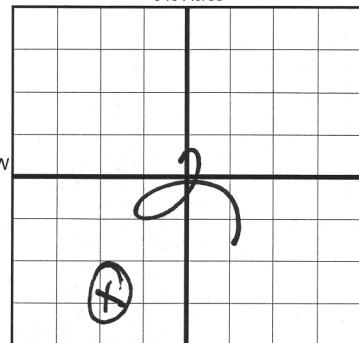
OKLAHOMA CORPORATION COMMISSION

Oil & Gas Conservation Division
Post Office Box 52000
Oklahoma City, Oklahoma 73152-2000
Rule 165:10-3-25

RECEIVED

APR 19 2018

OKLAHOMA CORPORATION COMMISSION
640 Acres



☒ ORIGINAL
☐ AMENDED (Reason)

TYPE OF DRILLING OPERATION

☐ STRAIGHT HOLE ☐ DIRECTIONAL HOLE ☒ HORIZONTAL HOLE
☐ SERVICE WELL

If directional or horizontal, see reverse for bottom hole location.

COUNTY	HUGHES	SEC	2	TWP	8N	RGE	12E
LEASE NAME	GRANT			WELL NO.	1-235WH		
SW 1/4 NW 1/4 SE 1/4 SW 1/4	FSL OF 1/4 SEC 905			FWL OF 1/4 SEC	1518		
ELEVATION Derrick FL	Ground	856	Latitude (if known)	35.1910707		Longitude (if known)	-96.0130787
OPERATOR NAME	CALYX ENERGY III, LLC			OTC/OCC OPERATOR NO.	23515		
ADDRESS	6120 SOUTH YALE, SUITE 1480						
CITY	TULSA		STATE	OK	ZIP	74136	

COMPLETION TYPE

<input checked="" type="checkbox"/> SINGLE ZONE
<input type="checkbox"/> MULTIPLE ZONE
Application Date
COMINGLED
Application Date
LOCATION
EXCEPTION ORDER
INCREASED DENSITY
ORDER NO.

CASING & CEMENT (Form 1002C must be attached)

TYPE	SIZE	WEIGHT	GRADE	FEET	PSI	SAX	TOP OF CMT
CONDUCTOR	20			29		9	SURFACE
SURFACE	13/3/8"	48#		481		325	SURFACE
INTERMEDIATE							
PRODUCTION	5-1/2"	17#		13879		1710	4682'
LINER							
						TOTAL DEPTH	13936'

PACKER @ BRAND & TYPE

PACKER @ BRAND & TYPE

PLUG @ TYPE PLUG @ TYPE

PLUG @ TYPE PLUG @ TYPE

TOTAL DEPTH 13936'

COMPLETION & TEST DATA BY PRODUCING FORMATION

FORMATION	(640) Woodford/Mississippi	Mississippian		
SPACING & SPACING ORDER NUMBER	328613 670063/669785	669765/670063 I.D. Multistart (674305)		Reported to From Focus
CLASS: Oil, Gas, Dry, Inj, Disp, Comm Disp, Svc	GAS	Gas (640)		
PERFORATED INTERVALS	5448-8341 9621-9650/5206-13822 9864-13725	5413-5448 8341-9621 9650-9864		
ACID/VOLUME	2247 Bbls 15% HCl			
FRACTURE TREATMENT (Fluids/Prop Amounts)	330,396 Bbls Fluid 7,837,682 # Sd			

Min Gas Allowable

(165:10-17-7)

Gas Purchaser/Measurer

BP ENERGY

☒ OR

Oil Allowable

(165:10-13-3)

First Sales Date

3/17/2018

INITIAL TEST DATA

INITIAL TEST DATE	3/13/2018
OIL-BBL/DAY	
OIL-GRAVITY (API)	
GAS-MCF/DAY	1228
GAS-OIL RATIO CU FT/BBL	
WATER-BBL/DAY	3791
PUMPING OR FLOWING	Flowing
INITIAL SHUT-IN PRESSURE	294
CHOKE SIZE	200
FLOW TUBING PRESSURE	110

AS SUBMITTED

A record of the formations drilled through, and pertinent remarks are presented on the reverse. I declare that I have knowledge of the contents of this report and am authorized by my organization to make this report, which was prepared by me or under my supervision and direction, with the data and facts stated herein to be true, correct, and complete to the best of my knowledge and belief.

Teresa Wade
SIGNATURE

Teresa Wade

NAME (PRINT OR TYPE)

DATE

PHONE NUMBER

6120 S. Yale, #1480

Tulsa

OK

74136

twade@calyxenergy.com

ADDRESS

CITY

STATE

ZIP

EMAIL ADDRESS

PLEASE TYPE OR USE BLACK INK ONLY

FORMATION RECORD

Give formation names and tops, if available, or descriptions and thickness of formations drilled through. Show intervals cored or drillstem tested.

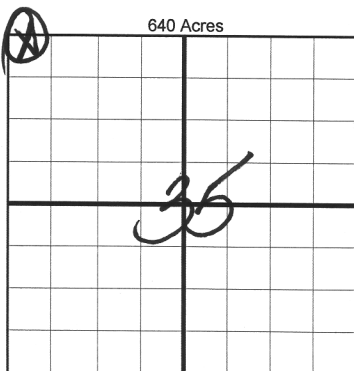
NAMES OF FORMATIONS	TOP
WAPANUCKA LS	3706'
UNION VALLEY LS	3881'
MAYES LS	4813'
WOODFORD SH	5070'

LEASE NAME GRANT WELL NO. 1-2-35WH

FOR COMMISSION USE ONLY		
ITD on file	<input type="checkbox"/> YES	<input type="checkbox"/> NO
APPROVED	DISAPPROVED	2) Reject Codes

Were open hole logs run?	<input type="checkbox"/> yes	<input checked="" type="checkbox"/> no
Date Last log was run	<u>1/19/2018</u>	
Was CO ₂ encountered?	<input type="checkbox"/> yes	<input checked="" type="checkbox"/> no at what depths? <u> </u>
Was H ₂ S encountered?	<input type="checkbox"/> yes	<input checked="" type="checkbox"/> no at what depths? <u> </u>
Were unusual drilling circumstances encountered?	<input type="checkbox"/> yes <input checked="" type="checkbox"/> no	
If yes, briefly explain below		

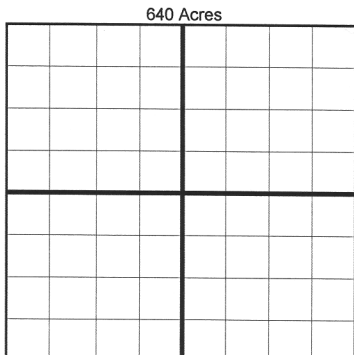
Other remarks: Per previous email from Michelle Farrell, the existing LE & MUA has filed an Emergency application to amend to include Mississippi and Hutton as associated CSS. CD 201703811T & CD 201703812T



If more than three drainholes are proposed, attach a separate sheet indicating the necessary information.

Direction must be stated in degrees azimuth. Please note, the horizontal drainhole and its end point must be located within the boundaries of the lease or spacing unit.

Directional surveys are required for all drainholes and directional wells.



BOTTOM HOLE LOCATION FOR DIRECTIONAL HOLE

SEC	TWP	RGE	COUNTY
Spot Location	1/4	1/4	1/4
Measured Total Depth	True Vertical Depth	BHL From Lease, Unit, or Property Line:	

BOTTOM HOLE LOCATION FOR HORIZONTAL HOLE: (LATERALS)

LATERAL #1

SEC	TWP	RGE	COUNTY
35	9N	12E	HUGHES
Spot Location	NW 1/4	NW 1/4	NW 1/4
Depth of Deviation	4,334	Radius of Turn	724
Measured Total Depth	13,936	True Vertical Depth	4,850
Feet From 1/4 Sec Lines	FNL 171	FWL 516	
Direction	358-N	Total Length	8,312
BHL From Lease, Unit, or Property Line:	171		

LATERAL #2

SEC	TWP	RGE	COUNTY
Spot Location	1/4	1/4	1/4
Depth of Deviation	Radius of Turn	Direction	Total Length
Measured Total Depth	True Vertical Depth	BHL From Lease, Unit, or Property Line:	

LATERAL #3

SEC	TWP	RGE	COUNTY
Spot Location	1/4	1/4	1/4
Depth of Deviation	Radius of Turn	Direction	Total Length
Measured Total Depth	True Vertical Depth	BHL From Lease, Unit, or Property Line:	

API NO. 3506324726
OTC PROD. UNIT NO. 063-223315

PLEASE TYPE OR USE BLACK INK ONLY

NOTE:

Attach copy of original 1002A if recompletion or reentry.

OKLAHOMA CORPORATION COMMISSION
Oil & Gas Conservation Division
Post Office Box 52000
Oklahoma City, Oklahoma 73152-2000
Rule 165:10-3-25

RECEIVED

Form 1002A
Rev. 2009

APR 19 2018

OKLAHOMA CORPORATION COMMISSION
640 Acres

1016EZ

☒ ORIGINAL
☐ AMENDED (Reason)

TYPE OF DRILLING OPERATION

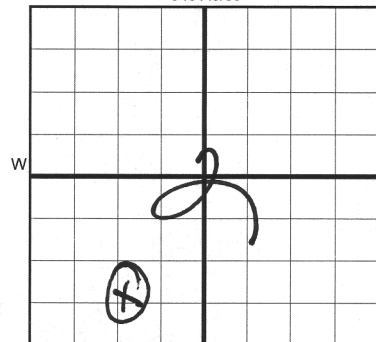
☐ STRAIGHT HOLE ☐ DIRECTIONAL HOLE ☒ HORIZONTAL HOLE
☐ SERVICE WELL

If directional or horizontal, see reverse for bottom hole location.

COUNTY	HUGHES	SEC	2	TWP	8N	RGE	12E
LEASE NAME	GRANT			WELL NO.	1-235WH		
SW 1/4 NW 1/4 SE 1/4 SW 1/4	FSL OF 1/4 SEC 905			FWL OF 1/4 SEC	1518		
ELEVATION	Ground	856	Latitude (if known)	35.1910707		Longitude (if known)	-96.0130787
OPERATOR NAME	CALYX ENERGY III, LLC			OTC/OCC OPERATOR NO.	23515		
ADDRESS	6120 SOUTH YALE, SUITE 1480						
CITY	TULSA		STATE	OK		ZIP	74136

COMPLETION REPORT

SPUD DATE 11/20/17
DRLG FINISHED DATE 12/24/17
DATE OF WELL COMPLETION 3/13/18
RECOM DATE 3/17/18



LOCATE WELL

COMPLETION TYPE

☒ SINGLE ZONE
☐ MULTIPLE ZONE
Application Date
COMINGLED
Application Date
LOCATION
EXCEPTION ORDER
INCREASED DENSITY
ORDER NO.

CASING & CEMENT (Form 1002C must be attached)

TYPE	SIZE	WEIGHT	GRADE	FEET	PSI	SAX	TOP OF CMT
CONDUCTOR	20			29		9	SURFACE
SURFACE	13/3/8"	48#		481		325	SURFACE
INTERMEDIATE							
PRODUCTION	5-1/2"	17#		13879		1710	4682'
LINER							

PACKER @ BRAND & TYPE
PACKER @ BRAND & TYPE

PLUG @ TYPE PLUG @ TYPE
PLUG @ TYPE PLUG @ TYPE

TOTAL DEPTH 13936'

COMPLETION & TEST DATA BY PRODUCING FORMATION

FORMATION	(640) Woodford/Mississippi	Mississippian	999	MS Pw F
SPACING & SPACING ORDER NUMBER	528613 670063/669705	669765/670063 I.D. Multinuit (674305)	Reported to Frac Focus	
CLASS: Oil, Gas, Dry, Inj, Disp, Comm Disp, Svc	GAS	GAS (640)		
PERFORATED INTERVALS	5448-8341 9621-9650/5200-13822 9864-13725	5413-5448 8341-9621 9650-9864	Multinuit:	
ACID/VOLUME	2247 Bbls 15% HCl		02-08N-12E: 49,1062% 22334S I 35-09N-11E: 50,2933% 223345A I	
FRACTURE TREATMENT (Fluids/Prop Amounts)	330,396 Bbls Fluid 7,837,682 # Sd			

Min Gas Allowable (165:10-17-7)

Gas Purchaser/Measurer
First Sales Date

BP ENERGY
3/17/2018

INITIAL TEST DATA

Oil Allowable (165:10-13-3)

INITIAL TEST DATE	3/13/2018
OIL-BBL/DAY	
OIL-GRAVITY (API)	
GAS-MCF/DAY	1228
GAS-OIL RATIO CU FT/BBL	
WATER-BBL/DAY	3791
PUMPING OR FLOWING	Flowing
INITIAL SHUT-IN PRESSURE	294
CHOKE SIZE	200
FLOW TUBING PRESSURE	110

AS SUBMITTED

A record of the formations drilled through, and pertinent remarks are presented on the reverse. I declare that I have knowledge of the contents of this report and am authorized by my organization to make this report, which was prepared by me or under my supervision and direction, with the data and facts stated herein to be true, correct, and complete to the best of my knowledge and belief.

SIGNATURE: Teresa Wade
NAME (PRINT OR TYPE): Teresa Wade
DATE: 4/17/18
PHONE NUMBER: 918-949-4224
ADDRESS: 6120 S. Yale, #1480
CITY: Tulsa
STATE: OK
ZIP: 74136
EMAIL ADDRESS: twade@calyxenergy.com

SCANNED