

Oklahoma Corporation Commission
Oil & Gas Conservation Division
Post Office Box 52000
Oklahoma City, Oklahoma 73152-2000
Rule 165: 10-3-25

Form 1002A

API No.: 35063247020001

Completion Report

Spud Date: September 11, 2017

OTC Prod. Unit No.: 063-222910

Drilling Finished Date: November 12, 2017

1st Prod Date: January 15, 2018

Completion Date: January 13, 2018

Drill Type: HORIZONTAL HOLE

Min Gas Allowable: Yes

Well Name: JEFFERSON 2-20-17CH

Purchaser/Measurer: BP ENERGY

Location: HUGHES 20 9N 12E
SW SW SW SW
255 FSL 315 FWL of 1/4 SEC
Latitude: 35.232534 Longitude: -96.068505
Derrick Elevation: 0 Ground Elevation: 774

First Sales Date: 01/16/2018

Operator: CALYX ENERGY III LLC 23515

6120 S YALE AVE STE 1480
TULSA, OK 74136-4226

Completion Type		Location Exception		Increased Density	
X	Single Zone	Order No		Order No	
	Multiple Zone	665623		There are no Increased Density records to display.	
	Commingled				

Casing and Cement							
Type	Size	Weight	Grade	Feet	PSI	SAX	Top of CMT
CONDUCTOR	20			29		9	SURFACE
SURFACE	13 3/8	54.5	H-40	492		325	SURFACE
PRODUCTION	5 1/2	17	P-110HC	13734		1730	2530

Liner								
Type	Size	Weight	Grade	Length	PSI	SAX	Top Depth	Bottom Depth
There are no Liner records to display.								

Total Depth: 13760

Packer		Plug	
Depth	Brand & Type	Depth	Plug Type
There are no Packer records to display.		There are no Plug records to display.	

Initial Test Data

Test Date	Formation	Oil BBL/Day	Oil-Gravity (API)	Gas MCF/Day	Gas-Oil Ratio Cu FT/BBL	Water BBL/Day	Pumpin or Flowing	Initial Shut-In Pressure	Choke Size	Flow Tubing Pressure
Jan 15, 2018	MISSISSIPPIAN	3	45	1168	389000	3900	FLOWING	407	66	342

Completion and Test Data by Producing Formation

Formation Name: MISSISSIPPIAN

Code: 359MSSP

Class: GAS

Spacing Orders

Order No	Unit Size
661353	640
665622	MULTIUNIT

Perforated Intervals

From	To
4308	13625

Acid Volumes

354 BARRELS 15% HCL

Fracture Treatments

330,649 BARRELS FLUID, 11,014,225 POUNDS SAND

Formation	Top
WAPANUCKA	3219
UNION VALLEY	3374
CANEY SHALE	4220

Were open hole logs run? No

Date last log run: December 01, 2017

Were unusual drilling circumstances encountered? No

Explanation:

Other Remarks

OCC - THIS DOCUMENT IS ACCEPTED BASED ON THE DATA SUBMITTED NEITHER THE FINAL LOCATION EXCEPTION NOR THE FINAL MULTIUNIT ORDERS HAVE BEEN ISSUED.

Lateral Holes

Sec: 17 TWP: 9N RGE: 12E County: HUGHES

NE NW NW NW

79 FNL 413 FWL of 1/4 SEC

Depth of Deviation: 3262 Radius of Turn: 673 Direction: 360 Total Length: 9317

Measured Total Depth: 13760 True Vertical Depth: 3788 End Pt. Location From Release, Unit or Property Line: 79

FOR COMMISSION USE ONLY

1139485

Status: Accepted

API NO. 3506324702
OTC PROD. UNIT NO. 063-222910

(PLEASE TYPE OR USE BLACK INK ONLY)

☒ ORIGINAL
☐ AMENDED (Reason)

OKLAHOMA CORPORATION COMMISSION

Oil & Gas Conservation Division

Post Office Box 52000

Oklahoma City, Oklahoma 73102-2000

Rule 165:10-3-25

NOTE:

Attach a copy of original
1002A if this is a
recompletion or reentry.

Form 1002A

Rev. 2009

TYPE OF DRILLING OPERATION

☐ STRAIGHT HOLE ☐ DIRECTIONAL HOLE ☒ HORIZONTAL HOLE
☐ SERVICE WELL

If directional or horizontal, see reverse for bottom hole location.

COUNTY HUGHES SEC 20 TWP 9N RGE 12E
LEASE NAME JEFFERSON
SW 1/4 SW 1/4 SW 1/4 SW 1/4 FSL OF 1/4 SEC 255 FWL OF 1/4 SEC 300.315
ELEVATION Ground 774 Latitude (if known) 35.2325340 Longitude (if known) -96.0685050
OPERATOR NAME CALYX ENERGY III, LLC OTC/OCC OPERATOR NO. 23515
ADDRESS 6120 SOUTH YALE, SUITE 1480
CITY TULSA STATE OK ZIP 74136

SPUD DATE 9/11/17
DRLG FINISHED DATE 11/12/17
DATE OF WELL COMPLETION 1/13/18
DATE OF PROD DATE 1/15/18
RECOMP DATE
Longitude (if known) -96.0685050

640 Acres
W E
LOCATE WELL

COMPLETION TYPE

☒ SINGLE ZONE
☐ MULTIPLE ZONE
Application Date
COMINGLED
Application Date
LOCATION EXCEPTION ORDER NO. 665623 E.O.
INCREASED DENSITY ORDER NO.

CASING & CEMENT (Form 1002C must be attached)

TYPE	SIZE	WEIGHT	GRADE	FEET	PSI	SAX	TOP OF CMT
CONDUCTOR	20			29		9	SURFACE
SURFACE	13-3/8	54.5#	H40	492		325	SURFACE
INTERMEDIATE							
PRODUCTION	5-1/2	17#	P-110HC	13734		1730	2530
LINER							

PACKER @ BRAND & TYPE PLUG @ TYPE PLUG @ TYPE
PACKER @ BRAND & TYPE PLUG @ TYPE PLUG @ TYPE

TOTAL DEPTH 13,760

COMPLETION & TEST DATA BY PRODUCING FORMATION

FORMATION MISSISSIPPIAN
SPACING & SPACING ORDER NUMBER 640 - 661353/665622 (Multiunit)
CLASS: Oil, Gas, Dry, Inj, Disp, Comm Disp, Svc
PERFORATED INTERVALS 4308-13625
ACID/VOLUME 354 Bbls 15% HCl
FRACTURE TREATMENT (Fluids/Prop Amounts) 330,649 Bbls Fluid
11,014,225 # Sand

Reported to Frac Forces

Min Gas Allowable (165:10-17-7)

Gas Purchaser/Measurer

BP Energy



OR

First Sales Date

1/16/2018

INITIAL TEST DATA

INITIAL TEST DATE	1/15/2018
OIL-BBL/DAY	3
OIL-GRAVITY (API)	45
GAS-MCF/DAY	1168
GAS-OIL RATIO CU FT/BBL	389000
WATER-BBL/DAY	3900
PUMPING OR FLOWING	Flowing
INITIAL SHUT-IN PRESSURE	407
CHOKE SIZE	66
FLOW TUBING PRESSURE	342

AS SUBMITTED

A record of the formations drilled through, and pertinent remarks are presented on the reverse. I declare that I have knowledge of the contents of this report and am authorized by my organization to make this report, which was prepared by me or under my supervision and direction, with the data and facts stated herein to be true, correct, and complete to the best of my knowledge and belief.

SIGNATURE Teresa Wade, Geo-Tech
6120 S. Yale, #1480
ADDRESS TULSA OK 74136
CITY STATE ZIP
DATE 4/12/2018
PHONE NUMBER 918-949-4224
EMAIL ADDRESS twade@calyxenergy.com

PLEASE TYPE OR USE BLACK INK ONLY
FORMATION RECORD

Give formation names and tops, if available, or descriptions and thickness of formations drilled through. Show intervals cored or drillstem tested.

LEASE NAME JEFFERSON WELL NO. 2-20-17CH

NAMES OF FORMATIONS	TOP
Wapanucka Ls	3219'
Union Valley Ls	3374'
Caney Sh	4220'

FOR COMMISSION USE ONLY

ITD on file ☐ YES ☐ NO

APPROVED _____ DISAPPROVED _____

2) Reject Codes _____

Were open hole logs run? _____ yes X no

Date Last log was run 12/1/2017

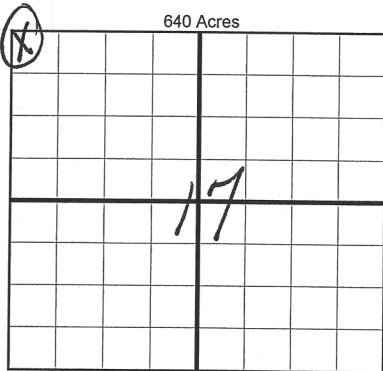
Was CO₂ encountered? _____ yes X no at what depths? _____

Was H₂S encountered? _____ yes X no at what depths? _____

Were unusual drilling circumstances encountered? _____ yes X no

If yes, briefly explain below _____

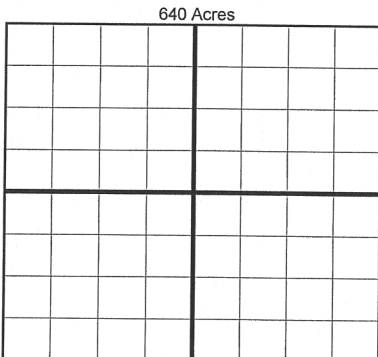
Other remarks:



If more than three drainholes are proposed, attach a separate sheet indicating the necessary information.

Direction must be stated in degrees azimuth. Please note, the horizontal drainhole and its end point must be located within the boundaries of the lease or spacing unit.

Directional surveys are required for all drainholes and directional wells.



BOTTOM HOLE LOCATION FOR DIRECTIONAL HOLE

SEC	TWP	RGE	COUNTY
Spot Location			
1/4	1/4	1/4	1/4
Measured Total Depth		True Vertical Depth	BHL From Lease, Unit, or Property Line:

BOTTOM HOLE LOCATION FOR HORIZONTAL HOLE: (LATERALS)

LATERAL #1

SEC	17	TWP	9N	RGE	12E	COUNTY	HUGHES
Spot Location							
NW 1/4		NW 1/4		NW 1/4		NW 1/4	
Depth of Deviation		3,262		Radius of Turn		673	
Measured Total Depth		13,760		True Vertical Depth		3,788	
				Feet From 1/4 Sec Lines		FNL 79	
				Direction		360°	
				Total Length		9317'	
				BHL From Lease, Unit, or Property Line:		79	

LATERAL #2

SEC	TWP	RGE	COUNTY
Spot Location			
1/4	1/4	1/4	1/4
Depth of Deviation		Radius of Turn	
Measured Total Depth		True Vertical Depth	

LATERAL #3

SEC	TWP	RGE	COUNTY
Spot Location			
1/4	1/4	1/4	1/4
Depth of Deviation		Radius of Turn	
Measured Total Depth		True Vertical Depth	

API NO. 5506324702
OTC PROD. UNIT NO. 063-222910

(PLEASE TYPE OR USE BLACK INK ONLY)

☒ ORIGINAL
☐ AMENDED (Reason)

TYPE OF DRILLING OPERATION

☐ STRAIGHT HOLE ☐ DIRECTIONAL HOLE ☒ HORIZONTAL HOLE
☐ SERVICE WELL

If directional or horizontal, see reverse for bottom hole location.

COUNTY HUGHES SEC 20 TWP 9N RGE 12E
LEASE NAME JEFFERSON
SW 1/4 SW 1/4 SW 1/4 SW 1/4 FSL OF 255
ELEVATION Ground 774 Latitude (if known) 35.2325340 Longitude (if known) -96.0685050
OPERATOR NAME CALYX ENERGY III, LLC OTC/OCC OPERATOR NO. 23515
ADDRESS 6120 SOUTH YALE, SUITE 1480
CITY TULSA STATE OK ZIP 74136

OKLAHOMA CORPORATION COMMISSION

Oil & Gas Conservation Division
Post Office Box 52000
Oklahoma City, Oklahoma 73102-2000

Rule 165:10-3-25

COMPLETION REPORT

SPUD DATE 9/11/17
DRLG FINISHED DATE 11/12/17
DATE OF WELL COMPLETION 1/13/18
WELL NO. 2-20-17011
PROD DATE 1/15/18
RECOMP DATE
FWL OF 1/4 SEC 315

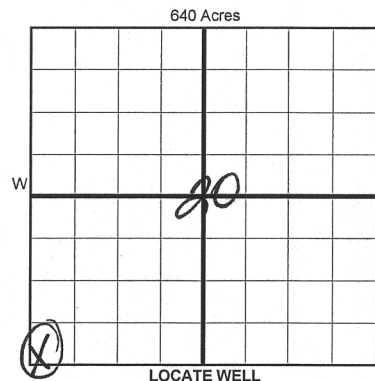
NOTE:

Attach a copy of original 1002A if this is a recompletion or reentry.

Form 1002A

Rev. 2009

1016EZ



COMPLETION TYPE

☒ SINGLE ZONE
☐ MULTIPLE ZONE
Application Date
COMINGLED
Application Date
LOCATION EXCEPTION ORDER NO. 665623 L.O.
INCREASED DENSITY ORDER NO.

CASING & CEMENT (Form 1002C must be attached)

TYPE	SIZE	WEIGHT	GRADE	FEET	PSI	SAX	TOP OF CMT
CONDUCTOR	20			29		9	SURFACE
SURFACE	13-3/8	54.5#	H40	492		325	SURFACE
INTERMEDIATE							
PRODUCTION	5-1/2	17#	P-110HC	13734		1730	2530
LINER							
TOTAL DEPTH							13,760

PACKER @ BRAND & TYPE PLUG @ TYPE PLUG @ TYPE
PACKER @ BRAND & TYPE PLUG @ TYPE PLUG @ TYPE

COMPLETION & TEST DATA BY PRODUCING FORMATION

FORMATION MISSISSIPPIAN
SPACING & SPACING ORDER NUMBER 661353/665622 (Multifunit)
CLASS: Oil, Gas, Dry, Inj, Disp, Comm Disp, Svc
PERFORATED INTERVALS 4308-13625
ACID/VOLUME 354 Bbls 15% HCl
FRACTURE TREATMENT (Fluids/Prop Amounts) 330,649 Bbls Fluid
11,014,225 # Sand

Min Gas Allowable (165:10-17-7)

Gas Purchaser/Measurer

BP Energy

☒ OR

First Sales Date

1/16/2018

INITIAL TEST DATA

INITIAL TEST DATE 1/15/2018
OIL-BBL/DAY 3
OIL-GRAVITY (API) 45
GAS-MCF/DAY 1168
GAS-OIL RATIO CU FT/BBL 389000
WATER-BBL/DAY 3900
PUMPING OR FLOWING Flowing
INITIAL SHUT-IN PRESSURE 407
CHOKE SIZE 66
FLOW TUBING PRESSURE 342

AS SUBMITTED

A record of the formations drilled through, and pertinent remarks are presented on the reverse. I declare that I have knowledge of the contents of this report and am authorized by my organization to make this report, which was prepared by me or under my supervision and direction, with the data and facts stated herein to be true, correct, and complete to the best of my knowledge and belief.

SIGNATURE Teresa Wade, Geo-Tech 4/12/2018 918-949-4224
6120 S. Yale, #1480 Tulsa OK 74136 twade@calyxenergy.com
ADDRESS CITY STATE ZIP EMAIL ADDRESS

SCANNED