

Oklahoma Corporation Commission  
Oil & Gas Conservation Division  
Post Office Box 52000  
Oklahoma City, Oklahoma 73152-2000  
Rule 165: 10-3-25

Form 1002A

API No.: 35063247270001

**Completion Report**

Spud Date: November 19, 2017

OTC Prod. Unit No.: 063-223316

Drilling Finished Date: January 15, 2018

1st Prod Date: March 20, 2018

Completion Date: March 13, 2018

**Drill Type: HORIZONTAL HOLE**

Min Gas Allowable: Yes

Well Name: GRANT 2-2-35WH

Purchaser/Measurer: BP ENERGY

Location: HUGHES 2 8N 12E  
SW NW SE SW  
920 FSL 1518 FWL of 1/4 SEC  
Latitude: 35.1911808 Longitude: -96.0131448  
Derrick Elevation: 0 Ground Elevation: 856

First Sales Date: 03/20/2018

Operator: CALYX ENERGY III LLC 23515

6120 S YALE AVE STE 1480  
TULSA, OK 74136-4226

Completion Type		Location Exception		Increased Density	
X	Single Zone	Order No		Order No	
	Multiple Zone	673185		672469	
	Commingled			672470	

Casing and Cement							
Type	Size	Weight	Grade	Feet	PSI	SAX	Top of CMT
CONDUCTOR	20			29		9	SURFACE
SURFACE	13 3/8	48		477		325	SURFACE
PRODUCTION	5 1/2	17		14112		1780	4034

Liner								
Type	Size	Weight	Grade	Length	PSI	SAX	Top Depth	Bottom Depth
There are no Liner records to display.								

**Total Depth: 14154**

Packer	
Depth	Brand & Type
There are no Packer records to display.	

Plug	
Depth	Plug Type
There are no Plug records to display.	

Initial Test Data
-------------------

Test Date	Formation	Oil BBL/Day	Oil-Gravity (API)	Gas MCF/Day	Gas-Oil Ratio Cu FT/BBL	Water BBL/Day	Pumpin or Flowing	Initial Shut-In Pressure	Choke Size	Flow Tubing Pressure
Mar 13, 2018	MISSISSIPPIAN / WOODFORD			1225		3781	FLOWING	230	167	143

#### Completion and Test Data by Producing Formation

Formation Name: WOODFORD

Code: 319WDFD

Class: GAS

##### Spacing Orders

Order No	Unit Size
528613	640
670063	640
677953	MULTIUNIT

##### Perforated Intervals

From	To
5227	5502
6721	6917
7420	8474
9807	14037

##### Acid Volumes

2,067 BARRELS 15% HCL

##### Fracture Treatments

268,091 BARRELS FLUID, 8,475,081 POUNDS SAND

Formation Name: MISSISSIPPIAN

Code: 359MSSP

Class: GAS

##### Spacing Orders

Order No	Unit Size
669765	640
670063	640
677953	MULTIUNIT

##### Perforated Intervals

From	To
5502	6721
6917	7420
8474	9807

##### Acid Volumes

ACIDIZED WITH WOODFORD

##### Fracture Treatments

FRAC'D WITH WOODFORD

Formation Name: MISSISSIPPIAN / WOODFORD

Code:

Class: GAS

Formation	Top
WAPANUCKA	3717
UNION VALLEY	3896
MISSISSIPPIAN	4892
WOODFORD SHALE	5154

Were open hole logs run? No

Date last log run: January 19, 2018

Were unusual drilling circumstances encountered? No

Explanation:

#### Other Remarks

OCC - THIS DOCUMENT IS ACCEPTED BASED ON THE DATA SUBMITTED NEITHER THE FINAL LOCATION EXCEPTION NOR THE FINAL MULTIUNIT ORDERS HAVE BEEN ISSUED.

Lateral Holes
Sec: 35 TWP: 9N RGE: 12E County: HUGHES
NE NW NE NW
85 FNL 1717 FWL of 1/4 SEC
Depth of Deviation: 4074 Radius of Turn: 606 Direction: 358 Total Length: 8810
Measured Total Depth: 14154 True Vertical Depth: 4681 End Pt. Location From Release, Unit or Property Line: 85

FOR COMMISSION USE ONLY
Status: Accepted
1139541

API NO. 3506324727  
OTC PROD. UNIT NO. 063-223316

PLEASE TYPE OR USE BLACK INK ONLY  
NOTE:

Attach copy of original 1002A  
if recompletion or reentry.

OKLAHOMA CORPORATION COMMISSION  
Oil & Gas Conservation Division  
Post Office Box 52000  
Oklahoma City, Oklahoma 73152-2000  
Rule 165:10-3-25

RECEIVED

APR 19 2018

OKLAHOMA CORPORATION  
COMMISSION

Form 1002A  
Rev. 2009

☒ ORIGINAL  
☐ AMENDED (Reason)

COMPLETION REPORT

TYPE OF DRILLING OPERATION

☐ STRAIGHT HOLE ☐ DIRECTIONAL HOLE ☒ HORIZONTAL HOLE  
☐ SERVICE WELL

If directional or horizontal, see reverse for bottom hole location.

COUNTY	HUGHES	SEC	2	TWP	8N	RGE	12E	SPUD DATE	11/19/17
LEASE NAME	GRANT			WELL NO.	2-2-35WHA			DRLG FINISHED DATE	1/15/18
SW 1/4 NW 1/4 SE 1/4 SW 1/4	FSL OF 1/4 SEC 920			FWL OF 1/4 SEC	1518			DATE OF WELL COMPLETION	3/13/18
ELEVATION Derrick FL	Ground	856	Latitude (if known)	35.1911808			Longitude (if known)	-96.0131448	
OPERATOR NAME	CALYX ENERGY III, LLC			OTC/OCC OPERATOR NO.	23515				
ADDRESS	6120 SOUTH YALE, SUITE 1480								
CITY	TULSA			STATE	OK		ZIP	74136	

640 Acres

W E

LOCATE WELL

COMPLETION TYPE

<input checked="" type="checkbox"/> SINGLE ZONE
<input type="checkbox"/> MULTIPLE ZONE
Application Date
COMINGLED
Application Date
LOCATION
EXCEPTION ORDER
INCREASED DENSITY
ORDER NO.

CASING & CEMENT (Form 1002C must be attached)

TYPE	SIZE	WEIGHT	GRADE	FEET	PSI	SAX	TOP OF CMT
CONDUCTOR	20			29		9	SURFACE
SURFACE	13/3/8"	48#		477		325	SURFACE
INTERMEDIATE							
PRODUCTION	5-1/2"	17#		14112		1780	4034'
LINER							
TOTAL DEPTH							14154'

PACKER @ \_\_\_\_\_ BRAND & TYPE \_\_\_\_\_ PLUG @ \_\_\_\_\_ TYPE \_\_\_\_\_ PLUG @ \_\_\_\_\_ TYPE \_\_\_\_\_  
PACKER @ \_\_\_\_\_ BRAND & TYPE \_\_\_\_\_ PLUG @ \_\_\_\_\_ TYPE \_\_\_\_\_ PLUG @ \_\_\_\_\_ TYPE \_\_\_\_\_

COMPLETION & TEST DATA BY PRODUCING FORMATION

FORMATION	640 Woodford/Mississippi	Mississippi					
SPACING & SPACING ORDER NUMBER	528613 670063/669765	669765/670063	677953 I.D. (Multiunit)				Reported to Fran Focus
CLASS: Oil, Gas, Dry, Inj, Disp, Comm Disp, Svc	GAS	645					
PERFORATED INTERVALS	5227-5502	5502-6721					
	6721-6917	5227-14037	6917-7420				
	7420-8474	9807-14037	8474-8459 9807				
ACID/VOLUME	2067 Bbls 15% HCl						
FRACTURE TREATMENT (Fluids/Prop Amounts)	268,091 Bbls Fluid						
	8,475,081 # Sd						

☒ Min Gas Allowable (165:10-17-7)  
OR  
☐ Oil Allowable (165:10-13-3)

Gas Purchaser/Measurer  
First Sales Date

BP ENERGY  
3/20/2018

INITIAL TEST DATA

INITIAL TEST DATE	3/13/2018
OIL-BBL/DAY	
OIL-GRAVITY ( API)	
GAS-MCF/DAY	1225
GAS-OIL RATIO CU FT/BBL	
WATER-BBL/DAY	3781
PUMPING OR FLOWING	Flowing
INITIAL SHUT-IN PRESSURE	230
CHOKE SIZE	167
FLOW TUBING PRESSURE	143

AS SUBMITTED

A record of the formations drilled through, and pertinent remarks are presented on the reverse. I declare that I have knowledge of the contents of this report and am authorized by my organization to make this report, which was prepared by me or under my supervision and direction, with the data and facts stated herein to be true, correct, and complete to the best of my knowledge and belief.

SIGNATURE	Teresa Wade	DATE	4/17/18	PHONE NUMBER	918-949-4224
6120 S. Yale, #1480	Tulsa	OK	74136	twade@calyxenergy.com	
ADDRESS	CITY	STATE	ZIP	EMAIL ADDRESS	

PLEASE TYPE OR USE BLACK INK ONLY

FORMATION RECORD

Give formation names and tops, if available, or descriptions and thickness of formations drilled through. Show intervals cored or drillstem tested.

NAMES OF FORMATIONS	TOP
WAPANUCKA LS	3717'
UNION VALLEY LS	3896'
MAYES LS	4892'
WOODFORD SH	5154'

LEASE NAME GRANT WELL NO. 2-2-35WH

FOR COMMISSION USE ONLY		
ITD on file	<input type="checkbox"/> YES	<input type="checkbox"/> NO
APPROVED	DISAPPROVED	2) Reject Codes

Were open hole logs run?	yes	<u>X</u> no
Date Last log was run	<u>1/19/2018</u>	
Was CO <sub>2</sub> encountered?	yes	<u>X</u> no at what depths? <u>          </u>
Was H <sub>2</sub> S encountered?	yes	<u>X</u> no at what depths? <u>          </u>
Were unusual drilling circumstances encountered?	yes <u>          </u> <u>X</u> no	
If yes, briefly explain below		

Other remarks:

---



---



---



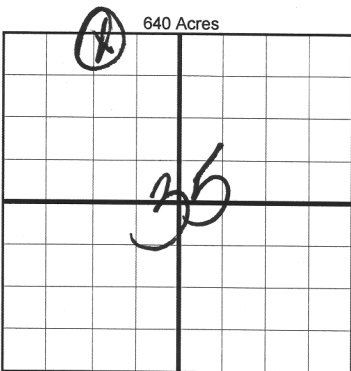
---



---



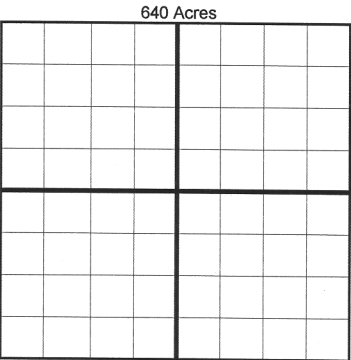
---



If more than three drainholes are proposed, attach a separate sheet indicating the necessary information.

Direction must be stated in degrees azimuth. Please note, the horizontal drainhole and its end point must be located within the boundaries of the lease or spacing unit.

Directional surveys are required for all drainholes and directional wells.



BOTTOM HOLE LOCATION FOR DIRECTIONAL HOLE

SEC	TWP	RGE	COUNTY
Spot Location	1/4	1/4	1/4
Measured Total Depth	True Vertical Depth		BHL From Lease, Unit, or Property Line:
Feet From 1/4 Sec Lines	FSL	FWL	

BOTTOM HOLE LOCATION FOR HORIZONTAL HOLE: (LATERALS)

LATERAL #1			
SEC	TWP	RGE	COUNTY
35	9N	12E	HUGHES
Spot Location	NW 1/4	NE 1/4	NW 1/4
Depth of Deviation	4,074	Radius of Turn	606
Measured Total Depth	14,154	True Vertical Depth	4,681
Feet From 1/4 Sec Lines	FNL	85	FWL
Direction	N	Total Length	8,810
BHL From Lease, Unit, or Property Line: 85			

LATERAL #2			
SEC	TWP	RGE	COUNTY
Spot Location	1/4	1/4	1/4
Depth of Deviation	Radius of Turn		Direction
Measured Total Depth	True Vertical Depth		Total Length
BHL From Lease, Unit, or Property Line:			

LATERAL #3			
SEC	TWP	RGE	COUNTY
Spot Location	1/4	1/4	1/4
Depth of Deviation	Radius of Turn		Direction
Measured Total Depth	True Vertical Depth		Total Length
BHL From Lease, Unit, or Property Line:			

API NO. 3506324727  
OTC PROD. UNIT NO. 063-223316

PLEASE TYPE OR USE BLACK INK ONLY  
NOTE:

Attach copy of original 1002A  
if recompletion or reentry.

☒ ORIGINAL  
☐ AMENDED (Reason)

OKLAHOMA CORPORATION COMMISSION  
Oil & Gas Conservation Division  
Post Office Box 52000  
Oklahoma City, Oklahoma 73152-2000  
Rule 165:10-3-25

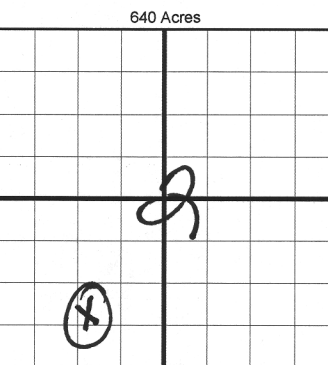
COMPLETION REPORT

TYPE OF DRILLING OPERATION

☐ STRAIGHT HOLE ☐ DIRECTIONAL HOLE ☒ HORIZONTAL HOLE  
☐ SERVICE WELL

If directional or horizontal, see reverse for bottom hole location.

COUNTY	HUGHES	SEC	2	TWP	8N	RGE	12E	SPUD DATE	11/19/17	
LEASE NAME	GRANT				WELL NO.	2-2-35/111			DRLG FINISHED DATE	1/15/18
SW 1/4 NW 1/4 SE 1/4 SW 1/4	FSL OF 1/4 SEC		920	FWL OF 1/4 SEC		1518	DATE OF WELL COMPLETION		3/13/18	
ELEVATION Derrick FL	Ground	856	Latitude (if known)		35.1911808	Longitude (if known)		-96.0131448	RECOMP DATE	3/20/18
OPERATOR NAME	CALYX ENERGY III, LLC				OTC/OCC OPERATOR NO.	23515				
ADDRESS	6120 SOUTH YALE, SUITE 1480									
CITY	TULSA	STATE	OK	ZIP	74136					



COMPLETION TYPE

<input checked="" type="checkbox"/> SINGLE ZONE	
<input type="checkbox"/> MULTIPLE ZONE	
Application Date	
COMINGLED	
Application Date	
LOCATION	673185/674510
EXCEPTION ORDER	
INCREASED DENSITY ORDER NO.	672469/672470

CASING & CEMENT (Form 1002C must be attached)

TYPE	SIZE	WEIGHT	GRADE	FEET	PSI	SAX	TOP OF CMT
CONDUCTOR	20			29		9	SURFACE
SURFACE	13/3/8"	48#		477		325	SURFACE
INTERMEDIATE							
PRODUCTION	5-1/2"	17#		14112		1780	4034'
LINER	(35) 640H	(2) 640H					
TOTAL DEPTH							14154'

PACKER @ BRAND & TYPE PLUG @ TYPE PLUG @ TYPE  
PACKER @ BRAND & TYPE PLUG @ TYPE PLUG @ TYPE

COMPLETION & TEST DATA BY PRODUCING FORMATION

FORMATION	640 Woodford/Mississippi	Mississippi	Reported
SPACING & SPACING ORDER NUMBER	528613 670063/669765	669765/670063	677953 I.D. (Multiunit)
CLASS: Oil, Gas, Dry, Inj, Disp, Comm Disp, Svc	GAS	645	999MSPWF
PERFORATED INTERVALS	6721-6917 5227-5502 5227-14037	6917-7420 5502-6721	02-08N-12E: 42.3383% 2233/6 I
ACID/VOLUME	2067 Bbls 15% HCl	8474-8457 9807	35-09N-12E: 57.6617% 2233/6A I
FRACTURE TREATMENT (Fluids/Prop Amounts)	268,091 Bbls Fluid		
	8,475,081 # Sd		

☒ Min Gas Allowable (165:10-17-7)  
OR  
☐ Oil Allowable (165:10-13-3)

Gas Purchaser/Measurer  
First Sales Date

BP ENERGY  
3/20/2018

INITIAL TEST DATA

INITIAL TEST DATE	3/13/2018
OIL-BBL/DAY	
OIL-GRAVITY ( API)	
GAS-MCF/DAY	1225
GAS-OIL RATIO CU FT/BBL	
WATER-BBL/DAY	3781
PUMPING OR FLOWING	Flowing
INITIAL SHUT-IN PRESSURE	230
CHOKE SIZE	167
FLOW TUBING PRESSURE	143

AS SUBMITTED

A record of the formations drilled through, and pertinent remarks are presented on the reverse. I declare that I have knowledge of the contents of this report and am authorized by my organization to make this report, which was prepared by me or under my supervision and direction, with the data and facts stated herein to be true, correct, and complete to the best of my knowledge and belief.

SIGNATURE: Teresa Wade NAME (PRINT OR TYPE): Teresa Wade DATE: 4/17/18 PHONE NUMBER: 918-949-4224  
ADDRESS: 6120 S. Yale, #1480 CITY: Tulsa STATE: OK ZIP: 74136 EMAIL ADDRESS: twade@calyxenergy.com

SCANNED

Form 1002A  
Rev. 2009

1016EZ