

Oklahoma Corporation Commission
Oil & Gas Conservation Division
Post Office Box 52000
Oklahoma City, Oklahoma 73152-2000
Rule 165: 10-3-25

Form 1002A

API No.: 35019210270003

Completion Report

Spud Date: June 04, 1972

OTC Prod. Unit No.: 019-223147-0-52

Drilling Finished Date: June 20, 1972

Amended

1st Prod Date: June 29, 1972

Amend Reason: SQUEEZE AND CONVERT TO INJECTION

Completion Date: July 08, 1972

Recomplete Date: April 09, 2018

Drill Type: SERVICE WELL

STRAIGHT HOLE

Well Name: AWU (FISH 1) 5-1D

Purchaser/Measurer:

Location: CARTER 35 3S 2W
C NE SW
1980 FSL 1980 FWL of 1/4 SEC
Derrick Elevation: 9 Ground Elevation: 0

First Sales Date:

Operator: ARDMORE PRODUCTION & EXPLORATION CO 16133
PO BOX 1988
301 W MAIN ST STE 415
ARDMORE, OK 73402-1988

Completion Type		Location Exception		Increased Density	
X	Single Zone	Order No		Order No	
	Multiple Zone	There are no Location Exception records to display.		There are no Increased Density records to display.	
	Commingled				

Casing and Cement							
Type	Size	Weight	Grade	Feet	PSI	SAX	Top of CMT
SURFACE	8 5/8	32		147		150	SURFACE
PRODUCTION	5 1/2	17 & 15.5		5868		350	SURFACE

Liner								
Type	Size	Weight	Grade	Length	PSI	SAX	Top Depth	Bottom Depth
There are no Liner records to display.								

Total Depth: 5892

Packer		Plug	
Depth	Brand & Type	Depth	Plug Type
There are no Packer records to display.		There are no Plug records to display.	

Initial Test Data

Test Date	Formation	Oil BBL/Day	Oil-Gravity (API)	Gas MCF/Day	Gas-Oil Ratio Cu FT/BBL	Water BBL/Day	Pumpin or Flowing	Initial Shut- In Pressure	Choke Size	Flow Tubing Pressure
There are no Initial Data records to display.										
Completion and Test Data by Producing Formation										
Formation Name: FUSILINA LOW			Code: 404FSLNL			Class: INJ				
Spacing Orders				Perforated Intervals						
Order No		Unit Size		From		To				
673578		UNIT		5644		5664				
Acid Volumes				Fracture Treatments						
There are no Acid Volume records to display.				20,000 GALLONS OIL, 21,500 POUNDS 10/20 SAND, 125 POUNDS MARK II ADOMITE						

Formation	Top
SEE ORIGINAL	0

Were open hole logs run? No

Date last log run:

Were unusual drilling circumstances encountered? No

Explanation:

Other Remarks
THE PERFORATIONS FROM 814 FEET - 1,003 FEET WERE SQUEEZED OFF WITH 525 SACKS IN 5 SQUEEZES IN MAY - JUNE 2018. A CIBP THAT WAS SET AT 1,010 FEET IN 1995 AND WAS DRILLED OUT AND PUSHED TO BOTTOM IN JUNE 2018. THE ORIGINAL PERFORATIONS FROM 5,644 FEET TO 5,664 FEET WERE CLEANED WITH A SCRAPER AND THE WELL WAS CONVERTED TO AN INJECTION WELL UNDER UIC PERMIT NUMBER 1808910032 FOR THE ATLANTIC OPERATING UNIT. THE ORIGINAL WELL NAME WAS THE FISH 1, AND THIS IS THE NAME USED IN THE ATLANTIC OPERATING UNIT TO LIMIT CONFUSION WITH THE OVERLAPPING AMENDED WHEELER UNIT OPERATIONS. THE PERFORATIONS FROM 1,001 FEET TO 1,003 FEET WERE SQUEEZE HOLES FROM THE 1995 RECOMPLETION. 100 SACKS WERE PUMPED INTO THE 1,001 FEET TO 1,003 FEET SQUEEZE HOLES IN 1995. OCC - UNIT ORDER NUMBER 673578

FOR COMMISSION USE ONLY	
Status: Accepted	1140359

API NO. 01921027
OTC PROD UNIT NO. 019 223147-0-52

(PLEASE TYPE OR USE BLACK INK ONLY)

OKLAHOMA CORPORATION COMMISSION

Oil & Gas Conservation Division

Post Office Box 52000

Oklahoma City, Oklahoma 73152-2000

Rule 165-10-3-25

RECEIVED

JUL 05 2018

OKLAHOMA CORPORATION COMMISSION

Form 1002A

Rev. 2009

ORIGINAL
☒ AMENDED (Reason)

squeeze & convert to injection

COMPLETION REPORT

TYPE OF DRILLING OPERATION

☒ STRAIGHT HOLE ☐ DIRECTIONAL HOLE ☐ HORIZONTAL HOLE
☒ SERVICE WELL

If directional or horizontal, see reverse for bottom hole location.

COUNTY Carter SEC 35 TWP 3S RGE 2W
LEASE NAME AWU 5 WELL NO. 1D
1/4 C 1/4 NE 1/4 SW 1/4 FSL OF 1980 FWL OF 1980
ELEVATION Derrick FL 9.6 Ground Latitude (if known)

SPUD DATE 6/4/1972
DRLG FINISHED DATE 6/20/1972
DATE OF WELL COMPLETION 7/8/1972
1st PROD DATE 6/29/1972
RECOMP DATE 7/10/1995
Longitude (if known) 4-9-2018

OPERATOR NAME Ardmore Production & Exploration Co.

OTC/OCC OPERATOR NO. 16133

ADDRESS PO Box 1988

CITY Ardmore STATE Oklahoma ZIP 73402

640 Acres
LOCATE WELL

COMPLETION TYPE

☒ SINGLE ZONE
MULTIPLE ZONE
Application Date
COMMINGLED
Application Date
LOCATION EXCEPTION
ORDER NO.
INCREASED DENSITY
ORDER NO.

CASING & CEMENT (Form 1002C must be attached)

TYPE	SIZE	WEIGHT	GRADE	FEET	PSI	SAX	TOP OF CMT
CONDUCTOR							
SURFACE	8 5/8	32		147'		150	Surf
INTERMEDIATE	DV Tool			720'		150	Surf
PRODUCTION	5 1/2	17.5		5868'		350	4220 surface
LINER	5 1/2	15.5		814 - 1003'		625	

PACKER @ BRAND & TYPE

PLUG @ TYPE

PLUG @ TYPE

TOTAL DEPTH 5,892

PACKER @ BRAND & TYPE

PLUG @ TYPE

PLUG @ TYPE

COMPLETION & TEST DATA BY PRODUCING FORMATION

FORMATION Lower Fusilinid Deese Lower Fusilinid
SPACING & SPACING 86266 86266 (40) 673578
ORDER NUMBER
CLASS: Oil, Gas, Dry, Inj, Injection
Disp, Comm Disp, Svc
5644 - 5664 814-826 910-938 5644 - 5664
PERFORATED INTERVALS 880-834 1001-1003
864-870
ACID/VOLUME
FRACTURE TREATMENT 20,000 gal Oil
21,500# 10-20 sand
125# Mark II Adomite

Min Gas Allowable (165-10-17-7)

Gas Purchaser/Measurer

INITIAL TEST DATA

Oil Allowable (165-10-13-3)
INITIAL TEST DATE 6/29/1972 7/10/1995
OIL-BBL/DAY 25 4
OIL-GRAVITY (API) 41 36
GAS-MCF/DAY 0 0
GAS-OIL RATIO CU FT/BBL
WATER-BBL/DAY 2-3
PUMPING OR FLOWING Pumping Pumping
INITIAL SHUT-IN PRESSURE
CHOKE SIZE
FLOW TUBING PRESSURE

AS SUBMITTED

A record of the formations drilled through and pertinent remarks are presented on the reverse. I declare that I have knowledge of the contents of this report and am authorized by my organization to make this report, which was prepared by me or under my supervision and direction, with the data and facts stated herein to be true, correct, and complete to the best of my knowledge and belief.

Charles E. Teacle III 6/21/2018 (580) 223-2292
SIGNATURE NAME (PRINT OR TYPE) DATE PHONE NUMBER
PO Box 1988 Ardmore OK 73402 ardmore_production@hotmail.com
ADDRESS CITY STATE ZIP EMAIL ADDRESS

PLEASE TYPE OR USE BLACK INK ONLY

FORMATION RECORD

Give formation names and tops, if available, or descriptions and thickness of formations drilled through. Show intervals cored or drillstem tested.

NAMES OF FORMATIONS	TOP
See Original	

LEASE NAME AWU 5 WELL NO. 1D

FOR COMMISSION USE ONLY	
ITD on file <input type="checkbox"/> YES <input type="checkbox"/> NO	
APPROVED _____	DISAPPROVED _____
2) Reject Codes	

Were open hole logs run?	_____ yes _____ no
Date Last log was run	_____
Was CO ₂ encountered?	_____ yes _____ no at what depths? _____
Was H ₂ S encountered?	_____ yes _____ no at what depths? _____
Were unusual drilling circumstances encountered?	_____ yes _____ no
If yes, briefly explain below:	

Other remarks: The perforations from 814 ft - 1003 ft were squeezed off with 525 sxs in 5 squeezes in May - June 2018. A CIBP that was set at 1010 ft in 1995 and was drilled out and pushed to bottom in June 2018. The original perforations from 5644 to 5664 were cleaned with a scrapper and the well was converted to an injection well under UIC Permit No. 1808910032 for the Atlantic Operating Unit. The original name was the Fish #1 and this is the name used in the Atlantic Operating Unit to limit confusion with the over lapping Amended Wheeler Unit operations. The perforations from 1001 ft to 1003 ft were squeeze holes from the 1995 recompletion. 100 sacks were pumped into the 1001 to 1003 ft squeeze holes in 1995. *OCC-unit order 673578*

640 Acres

If more than three drainholes are proposed, attach a separate sheet indicating the necessary information.

Direction must be stated in degrees azimuth. Please note, the horizontal drainhole and its end point must be located within the boundaries of the lease or spacing unit.

Directional surveys are required for all drainholes and directional wells.

640 Acres

BOTTOM HOLE LOCATION FOR DIRECTIONAL HOLE

SEC	TWP	RGE	COUNTY
Spot Location	1/4	1/4	1/4
Measured Total Depth		True Vertical Depth	BHL From Lease, Unit, or Property Line:

BOTTOM HOLE LOCATION FOR HORIZONTAL HOLE: (LATERALS)

LATERAL #1			
SEC	TWP	RGE	COUNTY
Spot Location	1/4	1/4	1/4
Depth of Deviation		Radius of Turn	Direction
Measured Total Depth		True Vertical Depth	BHL From Lease, Unit, or Property Line:

LATERAL #2

SEC	TWP	RGE	COUNTY
Spot Location	1/4	1/4	1/4
Depth of Deviation		Radius of Turn	Direction
Measured Total Depth		True Vertical Depth	BHL From Lease, Unit, or Property Line:

LATERAL #3

SEC	TWP	RGE	COUNTY
Spot Location	1/4	1/4	1/4
Depth of Deviation		Radius of Turn	Direction
Measured Total Depth		True Vertical Depth	BHL From Lease, Unit, or Property Line:

API NO. 35-01921027
OTC PROD. UNIT NO. 019-223147-0-52

Oil and Gas Conservation Division
P.O. Box 52000
Oklahoma City, OK 73152-2000
405-522-0577
OCCCentralProcessing@OCC.OK.GOV



OKLAHOMA
Corporation
Commission

Form 1002A
Rev. 2020



ORIGINAL
AMENDED (Reason)

conversion to producer

Rule 165:10-3-25

COMPLETION REPORT

TYPE OF DRILLING OPERATION

☒ STRAIGHT HOLE ☐ DIRECTIONAL HOLE ☐ HORIZONTAL HOLE
☐ SERVICE WELL

If directional or horizontal, see reverse for bottom hole location.

COUNTY Carter SEC 35 TWP 3S RGE 2W

LEASE NAME AWU (aka AOU Fish 1)

WELL NO 5-1 XD

SPUD DATE 6/4/1972

DRLG FINISHED DATE 6/20/1972

DATE OF WELL COMPLETION 7/8/1972

1st PROD DATE 6/29/1972

RECOMP DATE 6/1/2021

ELEVATION 9.6 Ground

Latitude

Longitude

OPERATOR NAME Ardmore Production & Exploration Co.

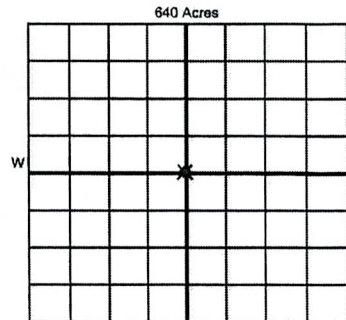
OTC / OCC OPERATOR NO. 16133

ADDRESS PO Box 1988

CITY Ardmore

STATE OK

ZIP 73402



COMPLETION TYPE

<input checked="" type="radio"/> SINGLE ZONE	
<input type="radio"/> MULTIPLE ZONE	
<input type="radio"/> COMMINGLED	
LOCATION EXCEPTION ORDER NO.	
MULTIUNIT ORDER NO.	
INCREASED DENSITY ORDER NO.	

CASING & CEMENT (Attach Form 1002C)

TYPE	SIZE	WEIGHT	GRADE	FEET	PSI	SAX	TOP OF CMT
CONDUCTOR							
SURFACE	8 5/8	32		147		150	Surf
INTERMEDIATE							
PRODUCTION	5 1/2	17 & 15.5		5868		350	4220
LINER							

PACKER @ BRAND & TYPE

PLUG @

TYPE

PLUG @

TYPE

TOTAL

PACKER @ BRAND & TYPE

PLUG @

TYPE

PLUG @

TYPE

DEPTH

5892

COMPLETION & TEST DATA BY PRODUCING FORMATION

FORMATION	404 FSLD → Lower Fusiloid				No New Frac
SPACING & SPACING ORDER NUMBER	673578 - (unit)				
CLASS: Oil, Gas, Dry, Inj, Disp, Comm Disp, Svc	Oil				
PERFORATED INTERVALS	5644-5664				
ACID/VOLUME					
FRACTURE TREATMENT (Fluids/Prop Amounts)	20,000 gal Oil 21500# 10-20 sand 125# Mark II Adomite				

Mln Gas Allowable (165:10-17-7)

OR

Oil Allowable (165:10-13-3)

Purchaser/Measurer

First Sales Date

INITIAL TEST DATA

INITIAL TEST DATE	7/1/2021				
OIL-BBL/DAY	0.25				
OIL-GRAVITY (API)					
GAS-MCF/DAY	None				
GAS-OIL RATIO CU FT/BBL	0				
WATER-BBL/DAY	2				
PUMPING OR FLOWING	Pumping				
INITIAL SHUT-IN PRESSURE					
CHOKE SIZE					
FLOW TUBING PRESSURE					

RECEIVED

JUL 16 2021

OKLAHOMA CORPORATION
COMMISSION

A record of the formations drilled through, and pertinent remarks are presented on the reverse. I declare that I have knowledge of the contents of this report and am authorized by my organization to make this report, which was prepared by me or under my supervision and direction, with the data and facts stated herein to be true, correct, and complete to the best of my knowledge and belief.

SIGNATURE

PO Box 1988

ADDRESS

Charles E Teacle III

NAME (PRINT OR TYPE)

Ardmore

OK

73402

CITY

STATE

ZIP

7/14/21

DATE

5802232292

PHONE NUMBER

ardmore_production@hotmail.com

EMAIL ADDRESS

PLEASE TYPE OR USE BLACK INK ONLY
FORMATION RECORD

Give formation names and tops, if available, or descriptions and thickness of formations drilled through. Show intervals cored or drillstem tested.

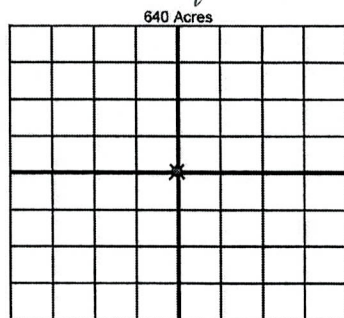
NAMES OF FORMATIONS	TOP
See Original	

LEASE NAME AWU 5 (aka AOU Fish 1) WELL NO. 5D

FOR COMMISSION USE ONLY	
ITD on file <input type="checkbox"/> YES <input type="checkbox"/> NO	
APPROVED _____	DISAPPROVED _____
2) Reject Codes	

Were open hole logs run?	<input checked="" type="radio"/> yes <input type="radio"/> no
Date Last log was run	See Original
Was CO ₂ encountered?	<input type="radio"/> yes <input type="radio"/> no at what depths? _____
Was H ₂ S encountered?	<input type="radio"/> yes <input type="radio"/> no at what depths? _____
Were unusual drilling circumstances encountered?	<input type="radio"/> yes <input type="radio"/> no
If yes, briefly explain below	

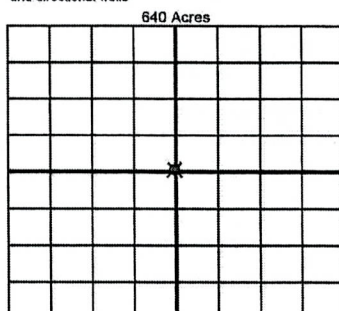
Other remarks: DV TGoal at 720'. Squeeze off perforations with 525 sxs at 814-1003 ft (May-June 2018).
Well stopped taking water @ 1750 psig (2000 psig permitted max). Convert well to test as a producer in
the Atlantic Operating Unit. UIC Permit No. for the well was 1808910032. OCC - Unit Order 673578.
OCC - D-V tool set at 720' used 150 sacks cement lifted to surface, top
of cement below D-V tool at 4220'. Also squeeze holes from 1001' to 1003' for
1995 completion 100 sacks used at that time since the that completion was squeezed off
from 814' to 1003' using 525 sacks cement in 5 squeezes



If more than three drainholes are proposed, attach a separate sheet indicating the necessary information.

Direction must be stated in degrees azimuth. Please note, the horizontal drainhole and its end point must be located within the boundaries of the lease or spacing unit.

Directional surveys are required for all drainholes and directional wells



BOTTOM HOLE LOCATION FOR DIRECTIONAL HOLE

SEC	TWP	RGE	COUNTY
1/4	1/4	1/4	1/4
Measured Total Depth	True Vertical Depth	Feet From 1/4 Sec Lines	
		BHL From Lease, Unit, or Property Line:	

BOTTOM HOLE LOCATION FOR HORIZONTAL HOLE: (LATERALS)

LATERAL #1			
SEC	TWP	RGE	COUNTY
1/4	1/4	1/4	1/4
Depth of Deviation	Radius of Turn	Direction	Total Length
Measured Total Depth	True Vertical Depth	BHL From Lease, Unit, or Property Line:	

LATERAL #2			
SEC	TWP	RGE	COUNTY
1/4	1/4	1/4	1/4
Depth of Deviation	Radius of Turn	Direction	Total Length
Measured Total Depth	True Vertical Depth	BHL From Lease, Unit, or Property Line:	

LATERAL #3			
SEC	TWP	RGE	COUNTY
1/4	1/4	1/4	1/4
Depth of Deviation	Radius of Turn	Direction	Total Length
Measured Total Depth	True Vertical Depth	BHL From Lease, Unit, or Property Line:	