

Oklahoma Corporation Commission
Oil & Gas Conservation Division
Post Office Box 52000
Oklahoma City, Oklahoma 73152-2000
Rule 165: 10-3-25

Form 1002A

API No.: 35045236830001

Completion Report

Spud Date: July 26, 2017

OTC Prod. Unit No.:

Drilling Finished Date: August 29, 2017

1st Prod Date: October 01, 2017

Completion Date: October 01, 2017

Drill Type: HORIZONTAL HOLE

Min Gas Allowable: Yes

Well Name: TAYLOR 1HR-34

Purchaser/Measurer: MARKWEST ENERGY

Location: ELLIS 3 17N 22W
SW NE NW NE
2090 FSL 705 FWL of 1/4 SEC
Latitude: 35.98326 Longitude: -99.53021
Derrick Elevation: 2134 Ground Elevation: 2113

First Sales Date: 09/24/2017

Operator: VALPOINT OPERATING LLC 23241

600 S TYLER ST STE 1701
AMARILLO, TX 79101-2353

Completion Type		Location Exception		Increased Density	
X	Single Zone	Order No		Order No	
	Multiple Zone	664434		There are no Increased Density records to display.	
	Commingled				

Casing and Cement							
Type	Size	Weight	Grade	Feet	PSI	SAX	Top of CMT
CONDUCTOR	20	50	J-55	80			
SURFACE	13 3/8	48	J-55	461		410	SURFACE
INTERMEDIATE	9 5/8	36	J-55	4210		1140	SURFACE
INTERMEDIATE	7	26	HCL-80	10074		480	4295
PRODUCTION	5 1/2	20	P-110	14667		455	7389

Liner								
Type	Size	Weight	Grade	Length	PSI	SAX	Top Depth	Bottom Depth
There are no Liner records to display.								

Total Depth: 14670

Packer	
Depth	Brand & Type
There are no Packer records to display.	

Plug	
Depth	Plug Type
There are no Plug records to display.	

Initial Test Data										
Test Date	Formation	Oil BBL/Day	Oil-Gravity (API)	Gas MCF/Day	Gas-Oil Ratio Cu FT/BBL	Water BBL/Day	Pumpin or Flowing	Initial Shut-In Pressure	Choke Size	Flow Tubing Pressure
Sep 26, 2017	OSWEGO	96	39.8	600	6250	2638	FLOWING	1950	36	590

Completion and Test Data by Producing Formation									
Formation Name: OSWEGO				Code: 404OSWG			Class: OIL		
Spacing Orders				Perforated Intervals					
Order No		Unit Size		From			To		
104943		640		10279			14584		
Acid Volumes				Fracture Treatments					
113750 GALLONS 15% HCL				6,982,290 GALLONS, 610,160 POUNDS 100 MESH, 1,668,860 POUNDS 40/70					

Formation	Top
BASE HEEBNER	7352
TONKAWA	7932
COTTAGE GROVE	8494
CLEVELAND	9142
BIG LIME	9752
OSWEGO	9838

Were open hole logs run? No

Date last log run:

Were unusual drilling circumstances encountered? No

Explanation:

Other Remarks
TWO INTERMEDIATE STRINGS OF CASING RUN (9-5/8"; 36# AND 7"; 26#). PRODUCTION CASING - 5-1/2"; 20# @ 9,122' AND 4-1/2"; 11.6# @ 9,122' - 14,667' MD. FRAC COMPLETED ON SEPTEMBER 18, 2017. GAS WENT TO SALES ON SEPTEMBER 24, 2017. TANK BATTERY FINISHED ON OCTOBER 1, 2017. OCC - THIS DOCUMENT IS ACCEPTED BASED ON THE DATA SUBMITTED THE FINAL LOCATION EXCEPTION HAS NOT BEEN ISSUED.

Lateral Holes
Sec: 34 TWP: 18N RGE: 22W County: ELLIS
SE NW NW NE
547 FNL 1982 FEL of 1/4 SEC
Depth of Deviation: 9090 Radius of Turn: 987 Direction: 1 Total Length: 4593
Measured Total Depth: 14670 True Vertical Depth: 9507 End Pt. Location From Release, Unit or Property Line: 547

FOR COMMISSION USE ONLY
Status: Accepted
1138114

RECEIVED

Form 1002A
Rev. 2009

NOV 09 2017

OKLAHOMA CORPORATION
COMMISSIONAPI
NO. 35-045-23683

PLEASE TYPE OR USE BLACK INK ONLY

NOTE:

Attach copy of original 1002A
if recompletion or reentry.OKLAHOMA CORPORATION COMMISSION
Oil & Gas Conservation Division
Post Office Box 52000
Oklahoma City, Oklahoma 73152-2000
Rule 165:10-3-25☒ ORIGINAL
☐ AMENDED (Reason)

COMPLETION REPORT

TYPE OF DRILLING OPERATION

☐ STRAIGHT HOLE ☐ DIRECTIONAL HOLE ☒ HORIZONTAL HOLE
☐ SERVICE WELL

If directional or horizontal, see reverse for bottom hole location.

COUNTY	Ellis	SEC	3	TWP	17N	RGE	22W
LEASE NAME	Taylor			WELL NO.	1HR-34		
SW 1/4 NE 1/4 NW 1/4 NE 1/4	FSL OF 1/4 SEC	2,090'	FWL OF 1/4 SEC	705'	DATE OF WELL COMPLETION	10/1/2017	
ELEVATION Derrick FL	2,134.5' Ground	2,113'	Latitude (if known)	35.98326	Longitude (if known)	-99.53021	
OPERATOR NAME	VALPOINT OPERATING LLC			OTC/OCC OPERATOR NO.	23241		
ADDRESS	600 S. Tyler St. Suite 1701						
CITY	Amarillo	STATE	Texas	ZIP	79101-2853		

640 Acres							
LOCATE WELL							

COMPLETION TYPE

<input checked="" type="checkbox"/> SINGLE ZONE
<input type="checkbox"/> MULTIPLE ZONE
Application Date
<input type="checkbox"/> COMMINGLED
Application Date
LOCATION
EXCEPTION ORDER
INCREASED DENSITY ORDER NO.

664434 E.O.

CASING & CEMENT (Form 1002C must be attached)

TYPE	SIZE	WEIGHT	GRADE	FEET	PSI	SAX	TOP OF CMT
CONDUCTOR	20"	50#	J-55	80'			
SURFACE	13-3/8"	48#	J-55	461'		410	Surface
INTERMEDIATE	9-5/8"	36#	J-55	4,210'		1,140	Surface
PRODUCTION	7"	26#	HCL-80	10,074'		480	4,295'
LINER	5-1/2"	20#	P-110	14,667'		455	7,389'

 PACKER @ _____ BRAND & TYPE _____ PLUG @ _____ TYPE _____ PLUG @ _____ TYPE _____
 PACKER @ _____ BRAND & TYPE _____ PLUG @ _____ TYPE _____ PLUG @ _____ TYPE _____

TOTAL DEPTH 14670

COMPLETION & TEST DATA BY PRODUCING FORMATION

FORMATION	Oswego
SPACING & SPACING ORDER NUMBER	104943 (640 ac)
CLASS: Oil, Gas, Dry, Inj, Disp, Comm Disp, Svc	Oil
PERFORATED INTERVALS	Last: 14,584' MD First: 10,279' MD
ACID/VOLUME	113,750 gals 15% HCL 6,982,290 gals
FRACTURE TREATMENT (Fluids/Prop Amounts)	610,160 # 100 Mesh 1,668,860 # 40/70

Reported
to Frac Focus
☒ Min Gas Allowable (165:10-17-7)
OR
☐ Oil Allowable (165:10-13-3)
Gas Purchaser/Measurer
First Sales DateMarkWest Energy
9/24/2017

INITIAL TEST DATA

INITIAL TEST DATE	9/26/2017
OIL-BBL/DAY	96
OIL-GRAVITY (API)	39.8
GAS-MCF/DAY	600
GAS-OIL RATIO CU FT/BBL	6250
WATER-BBL/DAY	2638
PUMPING OR FLOWING	Flowing
INITIAL SHUT-IN PRESSURE	1950
CHOKE SIZE	36
FLOW TUBING PRESSURE	590

AS SUBMITTED

A record of the formations drilled through, and pertinent remarks are presented on the reverse. I declare that I have knowledge of the contents of this report and am authorized by my organization to make this report, which was prepared by me or under my supervision and direction, with the data and facts stated herein to be true, correct, and complete to the best of my knowledge and belief.

<i>Matt Ramsden</i>	Matt Ramsden	10/30/2017	817-821-8279
SIGNATURE	NAME (PRINT OR TYPE)	DATE	PHONE NUMBER
600 S. Tyler St.	Amarillo TX 79101	matt@valpointoperating.com	
ADDRESS	CITY STATE ZIP	EMAIL ADDRESS	

PLEASE TYPE OR USE BLACK INK ONLY
FORMATION RECORD

Give formation names and tops, if available, or descriptions and thickness of formations drilled through. Show intervals cored or drillstem tested.

LEASE NAME Taylor WELL NO. 1HR-34

NAMES OF FORMATIONS	TOP
Base Heebner	7,352 (-5194)
Tonkawa	7,932 (-5772)
Cottage Grove	8,494 (-6332)
Cleveland	9,142 (-5772)
Big Lime	9,752 (-7586)
Oswego	9,838 (-7530)

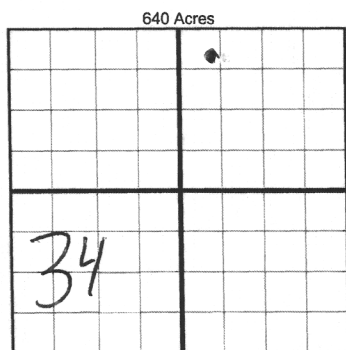
FOR COMMISSION USE ONLY	
ITD on file <input type="checkbox"/> YES <input type="checkbox"/> NO	
APPROVED _____	DISAPPROVED _____
2) Reject Codes	

Were open hole logs run?	yes <input type="checkbox"/> no <input checked="" type="checkbox"/>
Date Last log was run	_____
Was CO ₂ encountered?	yes <input type="checkbox"/> no <input checked="" type="checkbox"/> at what depths? _____
Was H ₂ S encountered?	yes <input type="checkbox"/> no <input checked="" type="checkbox"/> at what depths? _____
Were unusual drilling circumstances encountered?	yes <input type="checkbox"/> no <input checked="" type="checkbox"/>
If yes, briefly explain below	

Other remarks: Two Intermediate strings of casing run (9-5/8"; 36# and 7"; 26#).

Production Casing - 5-1/2"; 20# @ 9,122' and 4-1/2"; 11.6# @ 9,122'-14,667' MD.

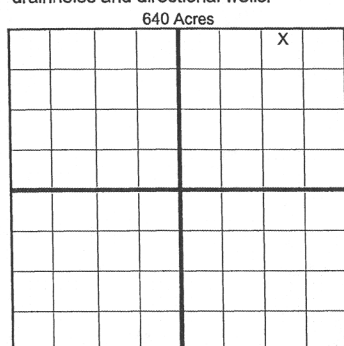
Frac completed on 9/18/2017. Gas went to sales on 9/24/2017. Tank battery finished on 10/1/2017.



If more than three drainholes are proposed, attach a separate sheet indicating the necessary information.

Direction must be stated in degrees azimuth. Please note, the horizontal drainhole and its end point must be located within the boundaries of the lease or spacing unit.

Directional surveys are required for all drainholes and directional wells.



BOTTOM HOLE LOCATION FOR DIRECTIONAL HOLE

SEC	TWP	RGE	COUNTY
Spot Location	1/4	1/4	1/4
Measured Total Depth	True Vertical Depth	BHL From Lease, Unit, or Property Line:	

BOTTOM HOLE LOCATION FOR HORIZONTAL HOLE: (LATERALS)

LATERAL #1

SEC	TWP	RGE	COUNTY
34	18N	22W	Ellis
Spot Location	1/4	1/4	1/4
Depth of Deviation	Radius of Turn	Direction	Total Length
Measured Total Depth	True Vertical Depth	BHL From Lease, Unit, or Property Line:	

SW 1/4 NE 1/4 NW 1/4 NE 1/4

9,090' 987' 1.2 4,593'

14,670' 9,507' 330' 547'

Per Exhibit FILE FNL 547 FEL 1982

LATERAL #2

SEC	TWP	RGE	COUNTY
Spot Location	1/4	1/4	1/4
Depth of Deviation	Radius of Turn	Direction	Total Length
Measured Total Depth	True Vertical Depth	BHL From Lease, Unit, or Property Line:	

LATERAL #3

SEC	TWP	RGE	COUNTY
Spot Location	1/4	1/4	1/4
Depth of Deviation	Radius of Turn	Direction	Total Length
Measured Total Depth	True Vertical Depth	BHL From Lease, Unit, or Property Line:	