

Oklahoma Corporation Commission
Oil & Gas Conservation Division
Post Office Box 52000
Oklahoma City, Oklahoma 73152-2000
Rule 165: 10-3-25

Form 1002A

API No.: 35049240810001

Completion Report

Spud Date: November 04, 1997

OTC Prod. Unit No.:

Drilling Finished Date: November 21, 1997

Amended

1st Prod Date: December 04, 1997

Amend Reason: PLUGGED AND ABANDONED

Completion Date: December 01, 1997

Recomplete Date: October 31, 2017

Drill Type: STRAIGHT HOLE

Well Name: FRANKENBURG-LINDSAY 2

Purchaser/Measurer:

Location: GARVIN 6 4N 3W
W2 E2 SE NE
660 FSL 2080 FWL of 1/4 SEC
Derrick Elevation: 980 Ground Elevation: 967

First Sales Date:

Operator: XTO ENERGY INC 21003

810 HOUSTON ST
FORT WORTH, TX 76102-6203

Completion Type		Location Exception		Increased Density	
X	Single Zone	Order No		Order No	
	Multiple Zone	There are no Location Exception records to display.		There are no Increased Density records to display.	
	Commingled				

Casing and Cement							
Type	Size	Weight	Grade	Feet	PSI	SAX	Top of CMT
SURFACE	9 5/8	40	K-55	428		215	SURFACE
PRODUCTION	4 1/2	11.6	N-80	7970		220	7812

Liner								
Type	Size	Weight	Grade	Length	PSI	SAX	Top Depth	Bottom Depth
There are no Liner records to display.								

Total Depth: 7970

Packer	
Depth	Brand & Type
There are no Packer records to display.	

Plug	
Depth	Plug Type
There are no Plug records to display.	

Initial Test Data										
Test Date	Formation	Oil BBL/Day	Oil-Gravity (API)	Gas MCF/Day	Gas-Oil Ratio Cu FT/BBL	Water BBL/Day	Pumpin or Flowing	Initial Shut-In Pressure	Choke Size	Flow Tubing Pressure
There are no Initial Data records to display.										

Completion and Test Data by Producing Formation			
Formation Name: SYCAMORE		Code: 352SCMR	Class: PLUG AND ABANDON
Spacing Orders		Perforated Intervals	
Order No	Unit Size	From	To
There are no Spacing Order records to display.		7814	7872
Acid Volumes		Fracture Treatments	
There are no Acid Volume records to display.		There are no Fracture Treatments records to display.	

Formation	Top
SEE ORIGINAL 1002A	0

Were open hole logs run? No
Date last log run:

Were unusual drilling circumstances encountered? No
Explanation:

Other Remarks
IRREGULAR SECTION

FOR COMMISSION USE ONLY	
Status: Accepted	1138115

RECEIVED

NOV 08 2017

Form 1002A
Rev. 2009

OKLAHOMA CORPORATION
COMMISSION

API NO. **049-24081**
OTC PROD.
UNIT NO.

PLEASE TYPE OR USE BLACK INK ONLY
NOTE:

Attach copy of original 1002A
if recompletion or reentry.

OKLAHOMA CORPORATION COMMISSION
Oil & Gas Conservation Division
Post Office Box 52000
Oklahoma City, Oklahoma 73152-2000
Rule 165:10-3-25

☐ ORIGINAL
☒ AMENDED (Reason)

Plugged & Abandoned

COMPLETION REPORT

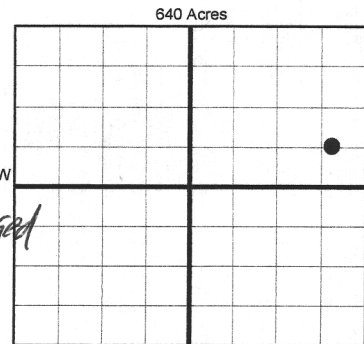
TYPE OF DRILLING OPERATION

☒ STRAIGHT HOLE ☐ DIRECTIONAL HOLE ☐ HORIZONTAL HOLE
☐ SERVICE WELL

If directional or horizontal, see reverse for bottom hole location.

COUNTY	Garvin	SEC	6	TWP	4N	RGE	3W
LEASE NAME	Frankenburg-Lindsay			WELL NO.	2-6		
W2 1/4	E2 1/4	SE 1/4	NE 1/4	FSL OF 1/4 SEC	660	FWL OF 1/4 SEC	2080
ELEVATION	980'	Ground	967'	Latitude (if known)			
OPERATOR NAME	XTO Energy Inc.			OTC/OCC OPERATOR NO.	21003		
ADDRESS	210 Park Avenue, Suite 2350						
CITY	Oklahoma City	STATE	Oklahoma	ZIP	73102		

SPUD DATE 11/4/1997
DRLG FINISHED DATE 11/21/1997
DATE OF WELL COMPLETION 12/1/1997
1st PROD DATE 12/4/1997
RECOMP DATE 10-31-2017
Longitude (if known)



COMPLETION TYPE

☒ SINGLE ZONE
☐ MULTIPLE ZONE
Application Date
COMINGLED
Application Date
LOCATION
EXCEPTION ORDER
INCREASED DENSITY
ORDER NO.

CASING & CEMENT (Form 1002C must be attached)

TYPE	SIZE	WEIGHT	GRADE	FEET	PSI	SAX	TOP OF CMT
CONDUCTOR							
SURFACE	9 5/8"	40#	K-55	428		215	Surface
INTERMEDIATE							
PRODUCTION	4 1/2"	11.6#	N-80	7,970		220	7812
LINER							
						TOTAL DEPTH	7970'

PACKER @ _____ BRAND & TYPE _____ PLUG @ _____ TYPE _____ PLUG @ _____ TYPE _____
PACKER @ _____ BRAND & TYPE _____ PLUG @ _____ TYPE _____ PLUG @ _____ TYPE _____

COMPLETION & TEST DATA BY PRODUCING FORMATION *352 SCMR*

FORMATION	Sycamore						
SPACING & SPACING ORDER NUMBER	20066						
CLASS: Oil, Gas, Dry, Inj, Disp, Comm Disp, Svc	Gas PTA						
PERFORATED INTERVALS	7814-7872						
ACID/VOLUME							
FRACTURE TREATMENT (Fluids/Prop Amounts)							

Min Gas Allowable (165:10-17-7)

Gas Purchaser/Measurer

OR
Oil Allowable (165:10-13-3)

First Sales Date

INITIAL TEST DATA

INITIAL TEST DATE	P & A'd	10/31/2017					
OIL-BBL/DAY							
OIL-GRAVITY (API)							
GAS-MCF/DAY							
GAS-OIL RATIO CU FT/BBL							
WATER-BBL/DAY							
PUMPING OR FLOWING							
INITIAL SHUT-IN PRESSURE							
CHOKE SIZE							
FLOW TUBING PRESSURE							

AS SUBMITTED

A record of the formations drilled through, and pertinent remarks are presented on the reverse. I declare that I have knowledge of the contents of this report and am authorized by my organization to make this report, which was prepared by me or under my supervision and direction, with the data and facts stated herein to be true, correct, and complete to the best of my knowledge and belief.

Debbie Waggoner

Debbie Waggoner

11/6/2017 405-319-3243

SIGNATURE

NAME (PRINT OR TYPE)

DATE PHONE NUMBER

210 Park Avenue, Suite 2350

Oklahoma City

Ok

73102

debbie_waggoner@xtoenergy.com

ADDRESS

CITY

STATE

ZIP

EMAIL ADDRESS

PLEASE TYPE OR USE BLACK INK ONLY
FORMATION RECORD

Give formation names and tops, if available, or descriptions and thickness of formations drilled through. Show intervals cored or drillstem tested.

NAMES OF FORMATIONS	TOP
see original 1002A	

LEASE NAME Frankenburg-Lindsay WELL NO. 2-6

FOR COMMISSION USE ONLY	
ITD on file <input type="checkbox"/> YES <input type="checkbox"/> NO	
APPROVED _____	DISAPPROVED _____
2) Reject Codes	

Were open hole logs run?	_____ yes <input checked="" type="checkbox"/> no
Date Last log was run	_____
Was CO ₂ encountered?	_____ yes <input checked="" type="checkbox"/> no at what depths? _____
Was H ₂ S encountered?	_____ yes <input checked="" type="checkbox"/> no at what depths? _____
Were unusual drilling circumstances encountered?	_____ yes <input checked="" type="checkbox"/> no
If yes, briefly explain below	

Other remarks: <u>Irregular Section</u>

640 Acres

If more than three drainholes are proposed, attach a separate sheet indicating the necessary information.

Direction must be stated in degrees azimuth. Please note, the horizontal drainhole and its end point must be located within the boundaries of the lease or spacing unit.

Directional surveys are required for all drainholes and directional wells.

640 Acres

BOTTOM HOLE LOCATION FOR DIRECTIONAL HOLE

SEC	TWP	RGE	COUNTY
Spot Location	1/4	1/4	1/4
Measured Total Depth	True Vertical Depth		Feet From 1/4 Sec Lines
		FSL	
		FWL	
BHL From Lease, Unit, or Property Line:			

BOTTOM HOLE LOCATION FOR HORIZONTAL HOLE: (LATERALS)

LATERAL #1			
SEC	TWP	RGE	COUNTY
Spot Location	1/4	1/4	1/4
Depth of Deviation	Radius of Turn		Direction
Measured Total Depth	True Vertical Depth		Total Length
		BHL From Lease, Unit, or Property Line:	

LATERAL #2			
SEC	TWP	RGE	COUNTY
Spot Location	1/4	1/4	1/4
Depth of Deviation	Radius of Turn		Direction
Measured Total Depth	True Vertical Depth		Total Length
		BHL From Lease, Unit, or Property Line:	

LATERAL #3			
SEC	TWP	RGE	COUNTY
Spot Location	1/4	1/4	1/4
Depth of Deviation	Radius of Turn		Direction
Measured Total Depth	True Vertical Depth		Total Length
		BHL From Lease, Unit, or Property Line:	